

STANDARD DRAWING

ELECTRICAL RATINGS (COMMERCIAL) POWER (BREAKING)

LOAD VS LIFE (CYCLES)	
LOAD	LIFE
250 VDC .1AMP	50.000
100 VDC .5AMP	20.000
.30 VDC 2 AMPS	20.000
120 VAC 2 AMPS	10.000
NO LOAD	100.000

CURRENT (CARRYING) — 10 Amps. Maximum
INITIAL VOLTAGE BREAKDOWN (25 C, 50% RH, sea level)

- BETWEEN CONTACTS** — 1500 volts RMS (60 cycles)
- BETWEEN POLES** — 2000 volts RMS (60 cycles)
- CIRCUIT TO GROUND** — 3000 volts RMS (60 cycles)

INSULATION RESISTANCE (ROOM CONDITIONS) — $> 10^{11}$ OHMS

CONTACT RESISTANCE (INITIAL) — .002 Ω
OHMS Maximum

THERMAL EMF — $< 1 \mu$ volt/ C

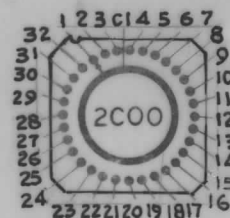
ENVIRONMENTAL RATINGS

TEMPERATURE RANGE — 40 C to + 85 C

MECHANICAL RATINGS

STOP STRENGTH — > 50 inch/lbs.

- ANGLE OF THROW: 11.25°**
- POSITION PER POLE: 32**
- NO. OF DECKS: 4**
- POLES PER DECK: 1**



FOUR WAFERS

NOTES

MATERIALS

(SUBJECT TO CHANGE)

- DETENT SPRING AND BALLS, SHAFT, MTG. PLATE, STOPS, BUSHING, MTG. HARDWARE, DETENT PLATE, BALL RETAINER, — passivated stainless steel
- WIPER ARMS — solid spring silver alloy (gold plate optional)
- CONTACTS, COLLECTOR RINGS, SEGMENTS — solid silver alloy (gold plate optional)
- STATOR (deck plate) — epoxy fibreglass
- TERMINALS (integral with contact) — solid silver alloy
- COMMON AND CORNER TERMINAL — copper alloy (tin dipped and teflon sleeve insulated)
- ROTOR BEARING, ROTOR SPACERS, INSULATOR CUPS — nylon
- ROTOR — diallyl phthalate (glass fibre reinforced)
- STOP PIN RETAINER — nickel silver
- SCREWS, STUDS AND DETENT SPACERS — nickel plated brass
- DECK SPACERS — steatite

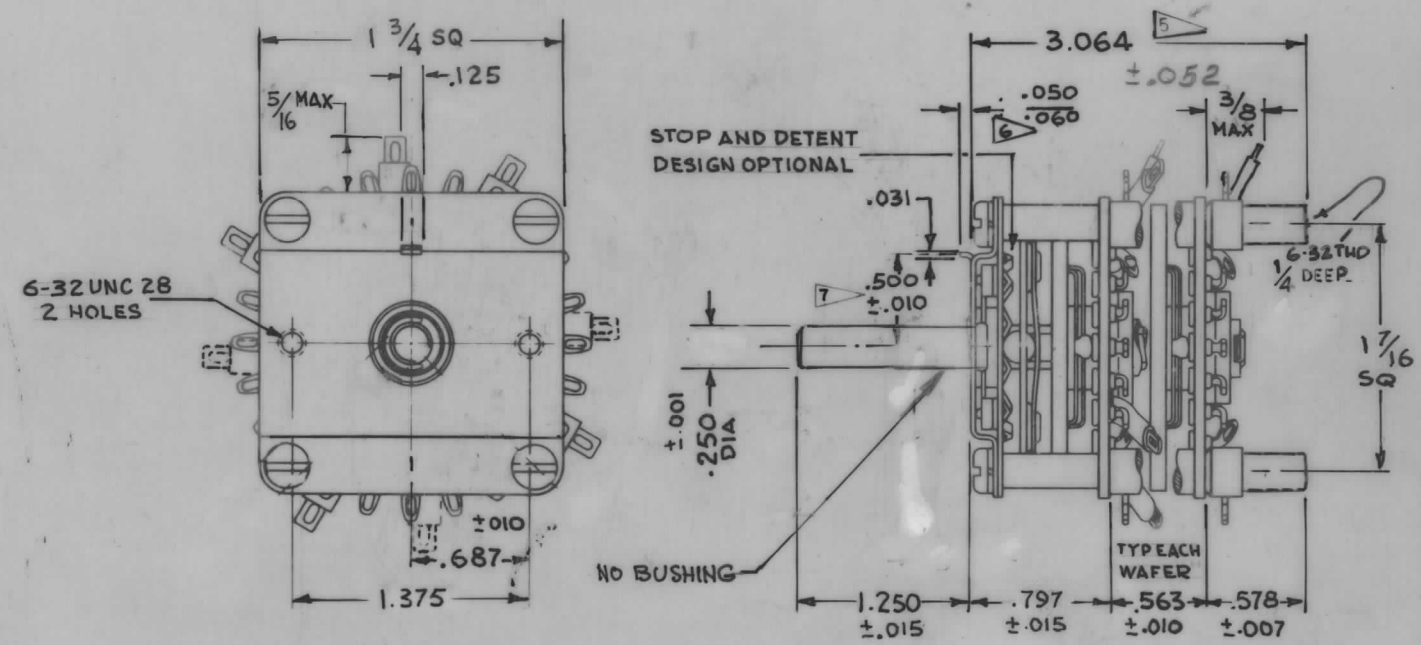
NOTES

- Life vs. load ratings apply for switches with up to 10 decks or 24 poles (whichever is greater). Life specifications must be derated for switches with greater number of decks or poles.
- All dimensions are in inches unless otherwise specified. Tolerances are $1/64$ " for fractional dimensions, .005" for decimal dimensions, and 2° for angular specifications, unless otherwise specified.
- All sections operated by one shaft must have same throw (indexing). Maximum number of positions for one shaft is determined by section with most poles. $22\frac{1}{2}$ " and 30" throw switches must have adjacent terminals (unnumbered to numbered) connected to obtain shorting action. Decks are numbered sequentially beginning with deck nearest mtg. plate.
- Rear support spacers are included in ϕA dimension SHOWN.
- Standard tang length is .050" to .060".
- Standard distance from shaft center to tang center .500" \pm .010".

A
SW377

REVISIONS

SYM	DESCRIPTION	DATE	E.M.N. NO.	DRAFT	CHKD	APPD
X1	MFGR PART # WAS (2C00B 32-4) - SHAFT, FLAT DELETED - DIM. 3.064 & 1.250 ADDED	3-23-65	X1	G.D.L.		
\emptyset	ORIGINAL RELEASE FOR PRODUCTION	5/20/65	-A-	HLA		
A	NOTES: 4, 8, 9 "B" DIM. "D" THREAD BUSHING DELETED NOTES: 5, 6, 7, REVISED. STUDS \pm .052 ADDED ANG. OF THROW 11.25° POS. PER POLE: 32 NO. OF DECKS: 4 POLES PER DECK: 1 ADDED	6-23-65	14315	D.V.	JCB	JC



REQ'D.	ITEM	PART NUMBER	DESCRIPTION	SYMBOL
EATON LIST OF MATERIAL				
MATERIAL			THE TECHNICAL MATERIEL CORP. MAMARONECK, NEW YORK	
FINISH			TITLE SWITCH, ROTARY	
UNLESS OTHERWISE SPECIFIED DIMENSIONS ARE IN INCHES AND INCLUDE CHEMICALLY APPLIED OR PLATED FINISHES			DRAWN HLA CHECKED JCB ELECT. DES. MECH. DES. P. Barnes	DATE 3-23-65 DATE 5/20/65 DATE 5/20/65
DECIMALS .X \pm .05 .XX \pm .01 .XXX \pm .005			TOLERANCES \pm 1/64 ANGLES \pm 0° 30'	
THE CONTENTS OF THIS DRAWING ARE THE EXCLUSIVE PROPERTY OF THE TECHNICAL MATERIEL CORP. ITS UNAUTHORIZED USE OR REPRODUCTION IN WHOLE OR IN PART IS STRICTLY FORBIDDEN.			FINAL APPROVAL DATE SHEET SW377 A	

1	HFSR-1	
Q'TY./UNIT	MODEL USED ON	ASS'Y. NO.
SCALE	CODE C	S401-171(2C00B32-4X770)