

DESG.	DIMENSION	TOL.	REMARK
A	1-3/16	±.015	SHAFT LG. FROM MTG. SURFACE
B	3/8	±.005	BUSH. LG.
C	ROUND	±.015	FLAT LG. (IF REQ.)
D	—	±2°	FLAT ANGLE (IF REQ.)
E	—	±.002	FLAT (IF REQUIRED)
F	3/8	±.010	KEY LOCATION (IF REQ.)
G	180°		KEY LOCATION (IF REQ.)
M	1/4	±.010	
N	1/4	±.093	REAR SCR. EXT.
Q	1/4	±.031	REAR SHAFT EXT.
R	5/16		1st SEC. SPACING

TMC PART NUMBER: SW 365 STAMP ON FRONT PLATE  
 FRONT PLATE SHAPE: ROUND OR OBLONG X  
 MECHANICAL SPECIFICATIONS: NO STOP, ROTATION 360°  
 NUMBER OF SECTIONS - 1  
 NUMBER OF POSITIONS - 4  
 ANGLE OF THROW - 30°

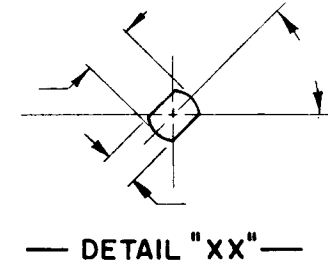
CONTACTS:  
 SHORTING TYPE, SECTIONS \_\_\_\_\_  
 NON SHORTING TYPE, SECTIONS \_\_\_\_\_  
 SILVER PLATED BRASS, SECTIONS \_\_\_\_\_  
 SILVER ALLOY, SECTIONS \_\_\_\_\_  
 WAFERS: SILICON GLASS | SECTION \_\_\_\_\_  
 ROTOR: KELF | SECTION \_\_\_\_\_  
 CERAMIC, SECTIONS \_\_\_\_\_  
 MYCALEX, SECTIONS \_\_\_\_\_  
 IMPREGNATION (IF REQ.) \_\_\_\_\_

FINISH REQUIREMENTS:  
 ARMY \_\_\_\_\_ NAVY \_\_\_\_\_ COMMERCIAL X \_\_\_\_\_  
 SALT TEST (IF REQ.) \_\_\_\_\_

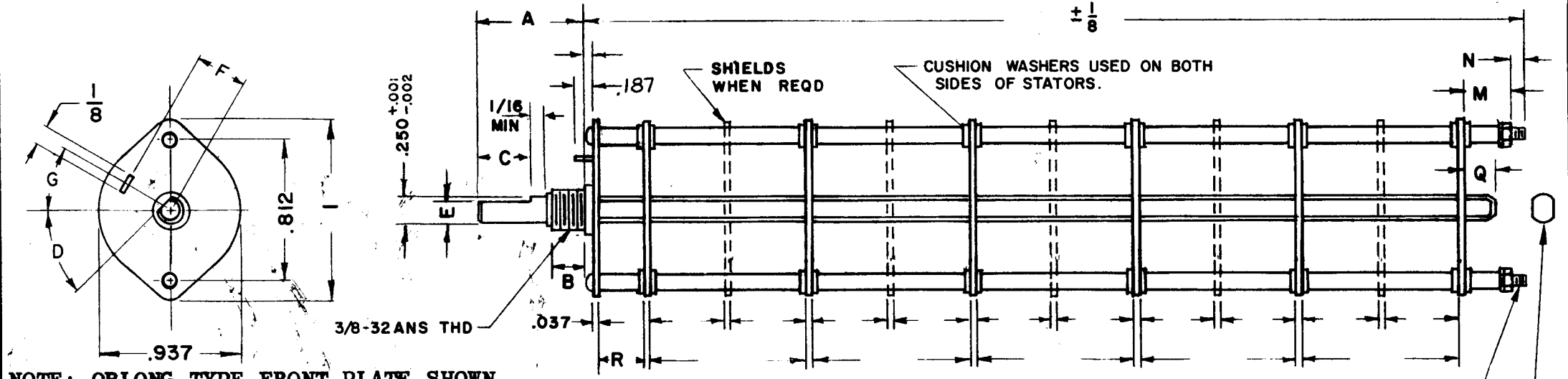
HARDWARE, TO BE SUPPLIED BY MANUFACTURER:  
 1 QUAN. 3/8 -32 NUTS 1/2 ACROSS FLATS  
 MATERIAL STEEL PLATING CADMIUM  
 1 QUAN. 3/8 INTERNAL TOOTH LOCKWASHER  
 MATERIAL STEEL PLATING CADMIUM

ELECTRICAL SPECIFICATIONS:  
 MAXIMUM RATED VOLTAGE \_\_\_\_\_  
 MAXIMUM RATED CURRENT \_\_\_\_\_  
 CONSTRUCTION BOLTED

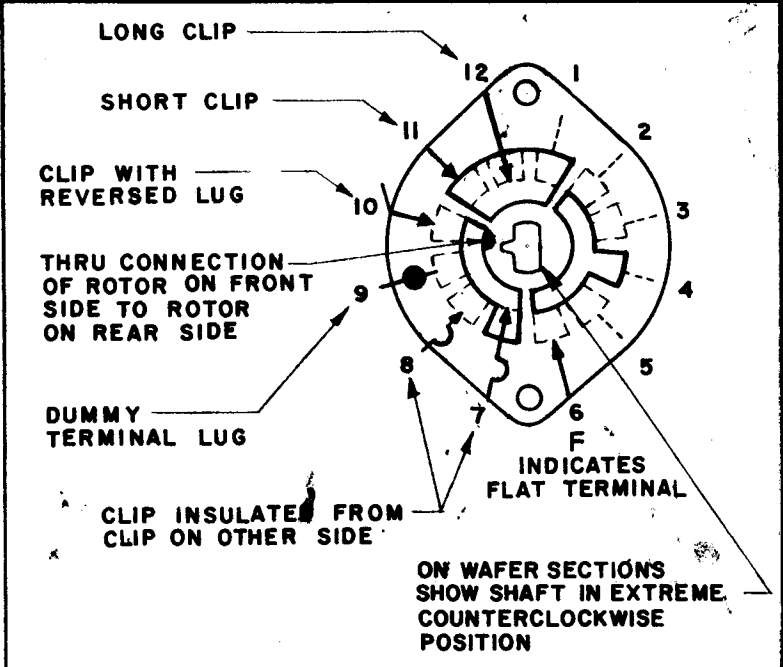
NOTE:  
 FOR S401-13 ("F" TYPE) SWITCHES, THE SHAFT POSITION MUST BE SPECIFIED ON DETAIL "XX" BELOW.



NOTES



NOTE: OBLONG TYPE FRONT PLATE SHOWN, (SEE MECHANICAL SPECIFICATION)



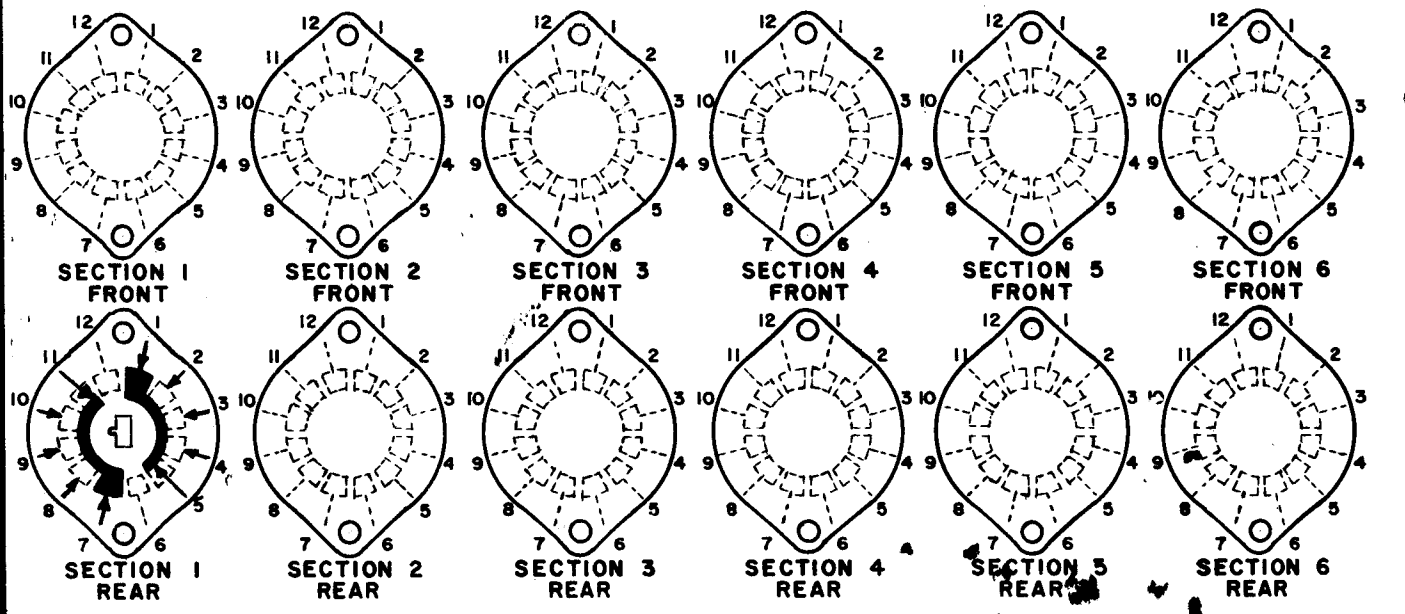
SYMBOLS USED IN MARKING PRINT

1	VLRB-1	
QTY./UNIT	MODEL USED ON	ASS'Y. NO.
SCALE	CODE	5401-13
	C	

THE CONTENTS OF THIS DRAWING ARE THE EXCLUSIVE PROPERTY OF THE TECHNICAL MATERIEL CORP. ITS UNAUTHORIZED USE OR REPRODUCTION IN WHOLE OR IN PART IS STRICTLY FORBIDDEN.

REVISIONS						
SYM	DESCRIPTION	DATE	E.M.N. NO.	DRAFT	CHKD	APPD
X	EXPER. RELEASE	8-20-64	X			
Ø	ORIGINAL RELEASE FOR PRODUCTION	8.21.64				

FRONT AND REAR SECTIONS VIEWED FROM FRONT OR KNOB END OF SWITCH IN EXTREME COUNTERCLOCKWISE POSITION. SEE NOTE (DET. "XX")



SWITCH, ROTARY - 12 POINT TYPE - A

MATERIAL	THE TECHNICAL MATERIEL CORP. GELLMAN MAMARONECK, NEW YORK			
FINISH	TITLE SWITCH, ROTARY IF SELECTIVITY			
UNLESS OTHERWISE SPECIFIED DIMENSIONS ARE IN INCHES AND INCLUDE CHEMICALLY APPLIED OR PLATED FINISHES	DRAWN 8-20-64	DATE 8-20-64	FINAL APPROVAL RTE	DATE
DECIMALS .X ± .05 .XX ± .01 .XXX ± .005	TOLERANCES	FRACTIONS ± 1/64 ANGLES ± 0° 30'	ELECT. DES. MECH. DES.	DATE 8-20-64
			SW 365	Ø
			SHEET	REV. LTR.