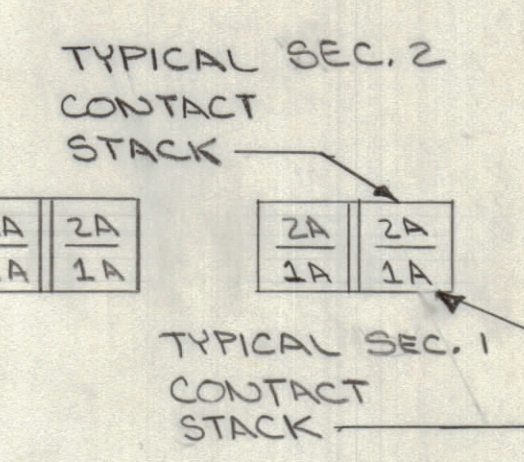
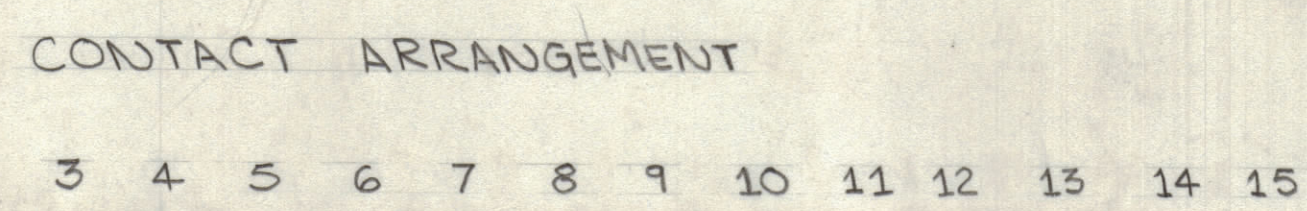
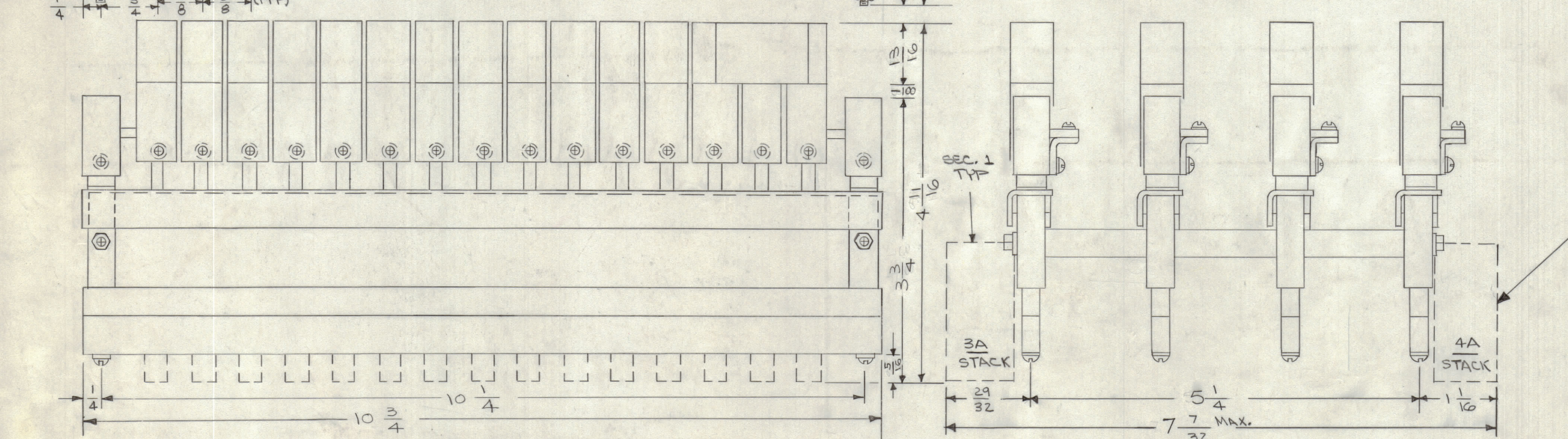
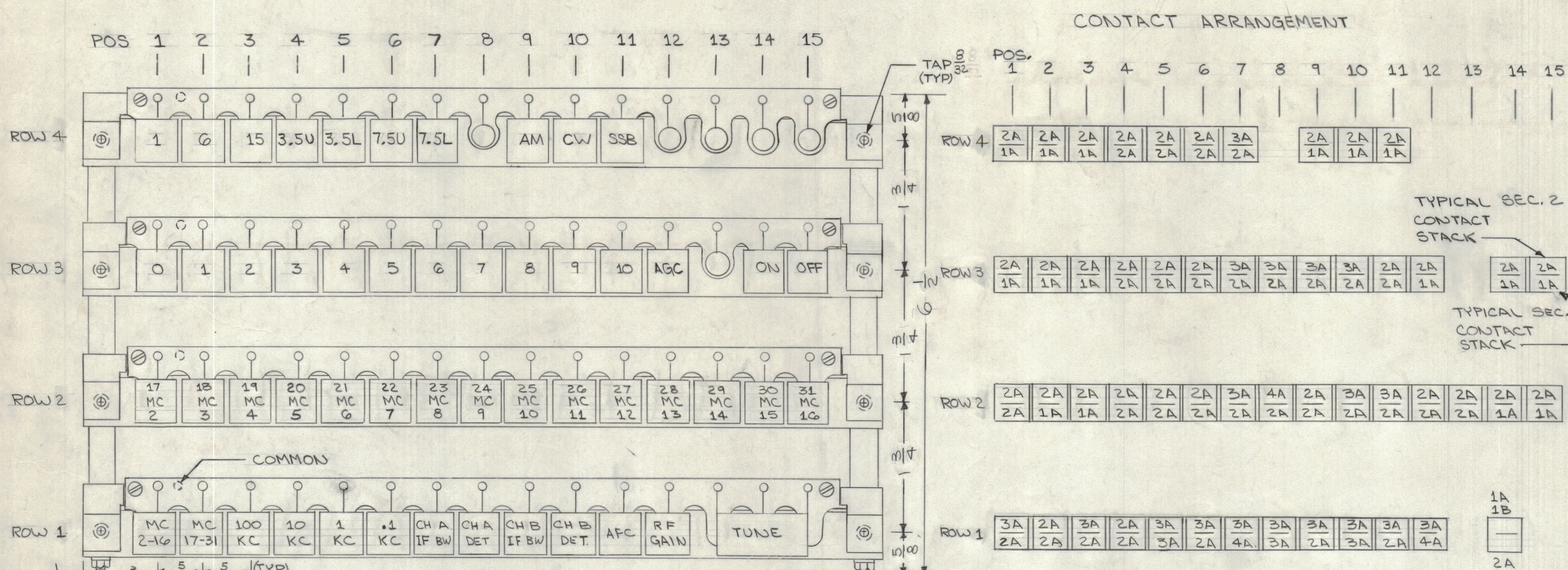


REVISIONS						
ZONE	SYM	DESCRIPTION	DATE	E.M.N. NO.	DRAFT	CHKD
	Ø	ORIGINAL RELEASE FOR PRODUCTION	8-23-65	Ø	✓	✓



- NOTES:
1. BOTTOM FORM "A" CONTACT ON SECTION 1 SIDE OF BAR HAS DELAYED MAKE.
 2. SWITCH ACTION: POSITIVE LOCKOUT IN AND BETWEEN EACH ROW, MECHANICAL INTERLOCK IN AND BETWEEN EACH ROW, TUNE BUTTON ROW 1 MOMENTARY.
 3. BUTTONS WHITE, EXCEPT RED "TUNE" BUTTON, ENGRAVING AS SHOWN.
 4. BUTTON MATERIAL, PLEXIGLASS WHITE #647-60.
 5. BUTTON TEMP. RANGE +275°F.
 6. LAMPS NOT SUPPLIED.
 7. FOR SPARE PARTS USE TMC B110 FOR LAMPS.

PURCHASING INFORMATION:
FOR COMPLETE SWITCH REPLACEMENT, NEW DESIGN OR NEW UNITS
S401-365.

TMC P/N	TMC CONTROL NO.	MFG. CODE	MFG. PART NO.
SW361	SW361X403	S401-403	F20LP-15-4201
	SW361X365	S401-365	

NOTE: MFG. TO STAMP TMC P/N & TMC CONTROL NO. 1/8 HIGH BLACK GOTHIC ON TOP OF SWITCH.

NOTES

RTPA-1	
QTY./UNIT	MODEL USED ON
SCALE	CODE
	S401-403 (F20LP-5-4201)
THE CONTENTS OF THIS DRAWING ARE THE EXCLUSIVE PROPERTY OF THE TECHNICAL MATERIEL CORP. ITS UNAUTHORIZED USE OR REPRODUCTION IN WHOLE OR IN PART IS STRICTLY FORBIDDEN.	

REQ'D.	ITEM	PART NUMBER	DESCRIPTION	SYMBOL
LIST OF MATERIAL				
MATERIAL		SEE NOTES		
FINISH		SEE NOTES		
TITLE		SWITCH, PUSH BUTTON (4 ROWS)		
DRAWN		E. ANZU 8-23-65		
CHECKED		A. J. 8/23/65		
ELECT. DES.		SW361		
MECH. DES.		K. JORDAN 8/23/65		

SW361