

DESG.	DIMENSION	TOL.	REMARKS
A	N/A		Foot mount only
B	N/A		Foot mount only
C	1.500		Flange mount only
D	1-7/8		Flange mount only
E	1-19/32		Max. over clips
F	.472	1/32	From rear plate to shaft end
G	N/A		Total length for foot mount
H	N/A	1/32	Foot mount only
J	1-1/64 MAX		FROM ARMATURE PLATE OVER MTG. PLATE
K	.781 REF.		MOUNTING PLATE TO WAFER NO. 1
L	.312		Last wafer to rear plate
M	2.800		Total length (to end of rear plate)
N	N/A		Size 3-1 5/32 Size 5-1 9/16
P	N/A	MAX.	FOOT MOUNT ONLY

Switch Specifications

Mechanical

Rotation of Solenoid (viewed from solenoid end): CW CCW
 No. of sections: 3
 No. of positions: 12
 Angle of throw: 30°
 Type Mounting: Flange Foot
 Solenoid Connections: Solder lug Wire

Contacts:

Shorting type, Sections 1
 Non-shorting, Sections 2 & 3
 Silver plated Brass NONE
 Silver alloy 1, 2 & 3

Wafer material: Phenolic Other
 Finish: Comm. 50hr. SALT SPRAY
 Opr. temp.:
 Wafer Type:

Electrical Specs.

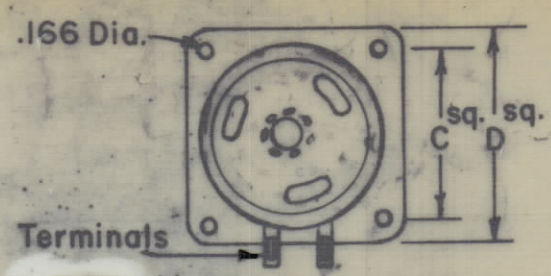
Current rating: Carry 5 amps resistive max.
 Break @ 24 volts: 2 amp resistive max.
 Break @ 115 volts: 1 amp resistive max.
 Dielectric Strength: 1000v clip to clip, 500v insulated clips back to back.

Coil Specifications

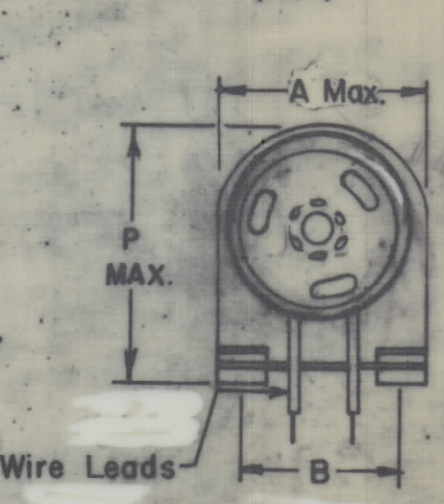
Solenoid Size: 4E
 Coil Resistance @ 20° C.:
 Voltage: 28 VDC
 Gross Starting Torque @ 20° C:
 Duty Cycle:
 Rotary Stroke Angle: 35°
 Electric Strength: 1200 VRMS
 Dust Cover: with w/out

NOTES:

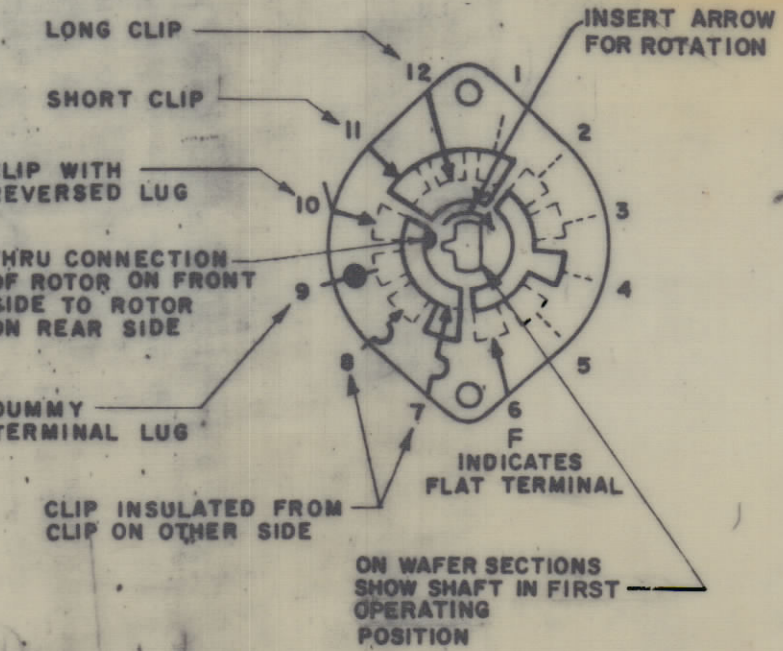
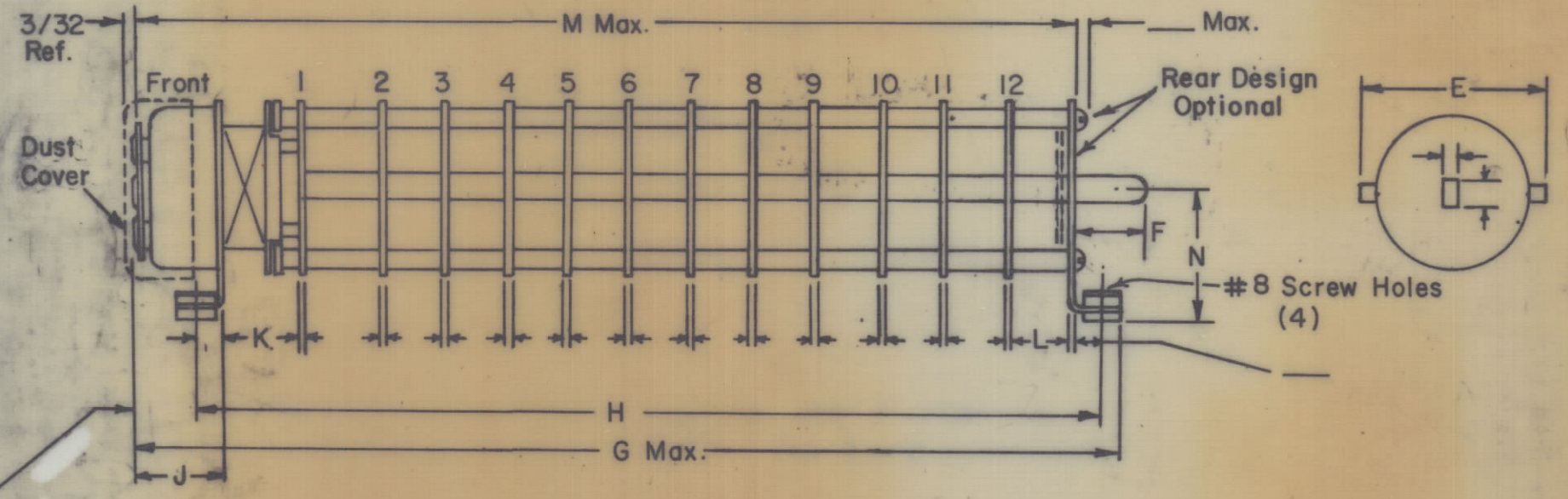
- View wafers from solenoid end of switch.
- Rear side of wafer viewed as if looking through wafers, from solenoid end.
- Orientation of wafer is with Pin 1 in the one o'clock or twelve o'clock position, according to rotation, as viewed from the solenoid end with solenoid connecting wires or terminals facing down.
- Rotation is in direction of arrow viewed from solenoid end.
- Wafers shown in No. 1 or first operating position.



Flange Mount (REF.)

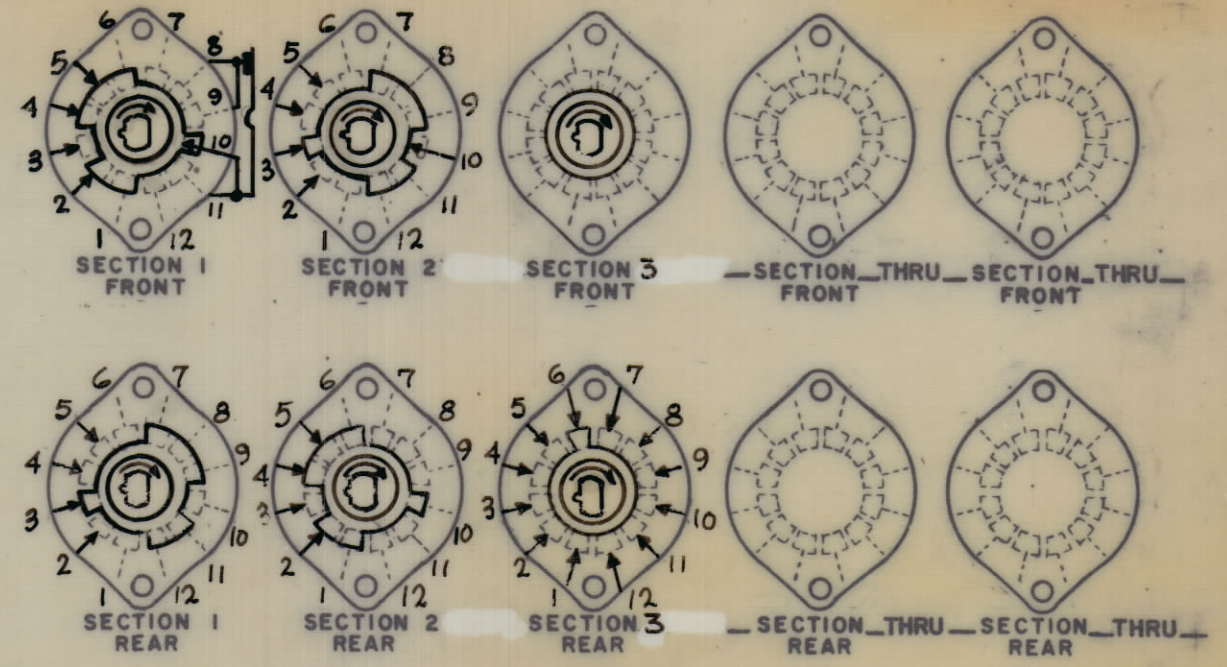


Foot Mount (REF.)



SYMBOLS USED IN MARKING PRINT

REVISIONS							
ZONE	SYM	DESCRIPTION	DATE	E.M.N. NO.	DRAFT	CHKD	APPD
		ORIGINAL RELEASE FOR PROD	3/23/67			RME	



REQ'D.	ITEM	PART NUMBER	DESCRIPTION	SYMBOL
LIST OF MATERIAL				
MATERIAL			THE TECHNICAL MATERIEL CORP. MAMARONECK, NEW YORK	
FINISH			TITLE SWITCH, ROTARY, SOLENOID 12 POSITION	
UNLESS OTHERWISE SPECIFIED DIMENSIONS ARE IN INCHES AND INCLUDE CHEMICALLY APPLIED OR PLATED FINISHES		DRAWN H. AUSTIN	DATE 5-4-66	FINAL APPROVAL DATE 3/21/67
DECIMALS .X ± .05 .XX ± .01 XXX ± .005		CHECKED JCB	DATE 5-23-66	DATE 3/21/67
FRACTIONS ± 1/64 ANGLE ± 0° 30'		ELECT. DES.	DATE	DATE
TOLERANCES		MECH. DES.	DATE	DATE
			DATE 3/21/67	DATE
			DATE	DATE

HFIR-1		
QTY./UNIT	MODEL USED ON	ASS'Y. NO.
SCALE	CODE C	S401-281(125681-001)

NOTES

THE CONTENTS OF THIS DRAWING ARE THE EXCLUSIVE PROPERTY OF THE TECHNICAL MATERIEL CORP. ITS UNAUTHORIZED USE OR REPRODUCTION IN WHOLE OR IN PART IS STRICTLY FORBIDDEN.

SW 358

SW 358