

SW357

REVISIONS						
SYM	DESCRIPTION	DATE	E.M.N. NO.	DRAFT	CHKD	APPD
Ø	ORIGINAL RELEASE FOR PRODUCTION	4/19/65	Ø	Ø		

- NOTE:**
1. VIEW WAFERS FROM SOLENOID END OF SWITCH.
 2. REAR SIDE IS VIEWED AS IF LOOKING THROUGH WAFER, FROM SOLENOID END.
 3. ORIENTATION OF WAFER IS WITH PIN 1 IN THE ONE O'CLOCK POSITION AS VIEWED FROM THE SOLENOID END WITH CONNECTING WIRES OR TERMINALS FACING DOWN.
 4. ROTATION IN DIRECTION OF ARROW VIEWED FROM SOLENOID END.
 5. WAFERS SHOWN IN NO. 1 POSITION.

SWITCH SPECIFICATIONS

MECHANICAL

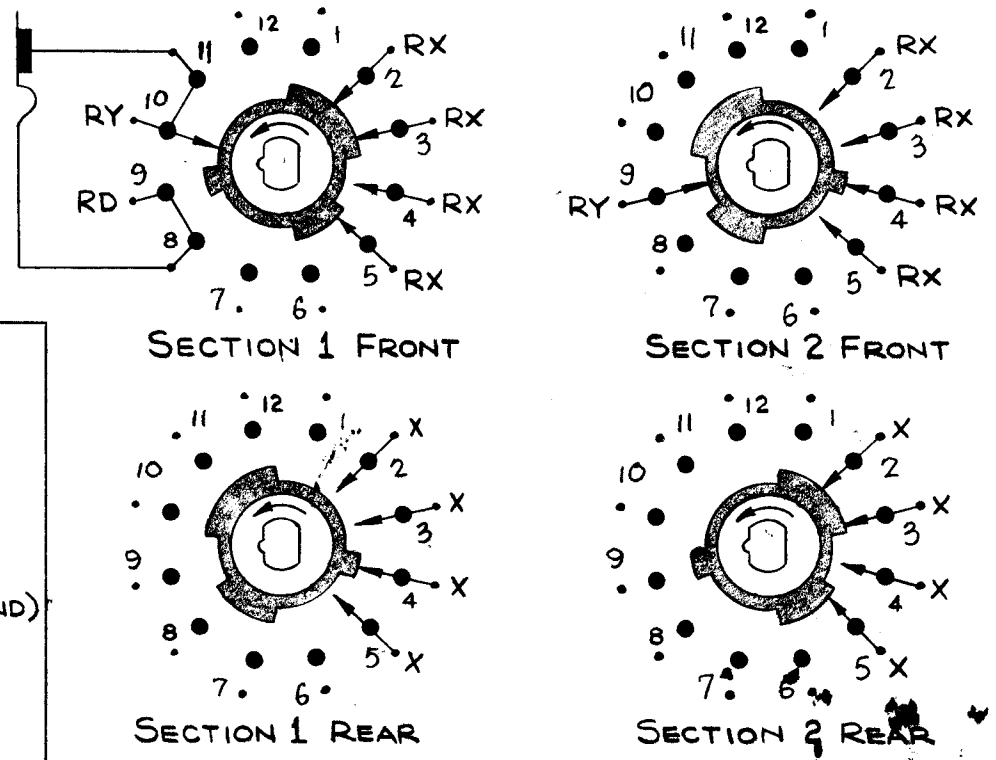
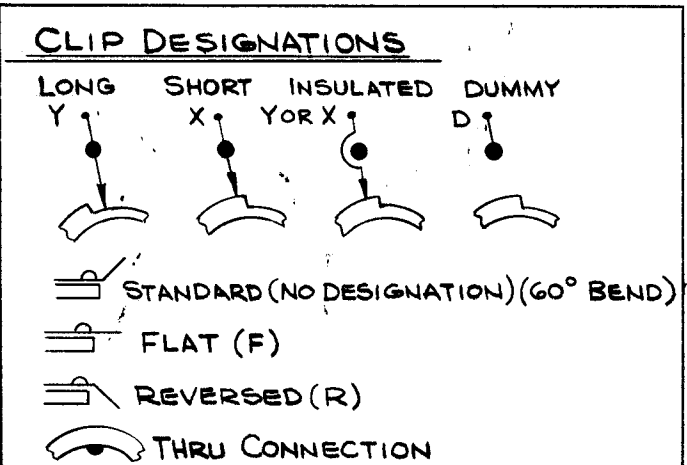
- NO. OF SECTIONS: 2
- NO. OF POSITIONS: 12
- ANGLE OF THROW: 30°
- CONTACT MATERIAL: SOLID SILVER ALLOY
- CONTACT TYPE: SECT. 1, SPECIAL
- WAFER MATERIAL: BAKELITE
- FINISH: 50 HOUR SALT SPRAY

ELECTRICAL

- CURRENT RATING: CARRY: 5 TO 10 AMPS. RESISTIVE MAX.
- BREAK @ 24 VDC: 5 AMPS. RESISTIVE MAX.
- BREAK @ 115 VDC: 1 AMP. RESISTIVE MAX.
- DIELECTRIC STRENGTH: 1000V CLIP TO CLIP, 500V INSULATED
- CLIPS BACK TO BACK

COIL SPECIFICATIONS

- SOLENOID SIZE: 5S
- COIL RESISTANCE @ 20°C: $4.91 \Omega \pm 5\%$
- VOLTAGE: 28 VDC
- GROSS STARTING TORQUE FOR 1/10 DUTY CYCLE AND 35° STROKE - 6.7 POUND INCHES
- DIELECTRIC STRENGTH: 1200 VRMS



NOTES

HFSR-1		
Q'TY./UNIT	MODEL USED ON	ASS'Y. NO.
SCALE	CODE	5401-281 124245-001

THE CONTENTS OF THIS DRAWING ARE THE EXCLUSIVE PROPERTY OF THE TECHNICAL MATERIEL CORP. ITS UNAUTHORIZED USE OR REPRODUCTION IN WHOLE OR IN PART IS STRICTLY FORBIDDEN.

REQ'D.	ITEM	PART NUMBER	DESCRIPTION	SYMBOL
LIST OF MATERIAL				
MATERIAL		THE TECHNICAL MATERIEL CORP. MAMARONECK, NEW YORK		
FINISH		TITLE SWITCH, ROTARY, SOLENOID		
UNLESS OTHERWISE SPECIFIED DIMENSIONS ARE IN INCHES AND INCLUDE CHEMICALLY APPLIED OR PLATED FINISHES		DRAWN H. AUSTIN	DATE 3-5-65	FINAL APPROVAL <i>F. E. Cator</i>
		CHECKED <i>JCB</i>	DATE 3-5-65	DATE 4/20/65
DECIMALS .X ± .05 .XX ± .01 .XXX ± .005		FRACTIONS ± 1/64 ANGLES ± 0° 30'		DATE 4/19/65
TOLERANCES		ELECT. DES. <i>[Signature]</i>	DATE	DATE
		MECH. DES. <i>[Signature]</i>	DATE	DATE
		SW357		Ø
		SHEET		REV. LTR.