

**SWITCH SPECIFICATIONS**

**MECHANICAL**

- NO. OF SECTIONS: 3
- NO. OF POSITIONS: 12
- ANGLE OF THROW: 30°
- CONTACT MATERIAL: SOLID SILVER ALLOY
- CONTACT TYPE: SECT. 1, SPECIAL. SECT. 2 & 3, NON-SHORTING.
- WAFER MATERIAL: BAKELITE
- FINISH: 50 HOUR SALT SPRAY
- OPERATING TEMP: -55°C TO 80°C

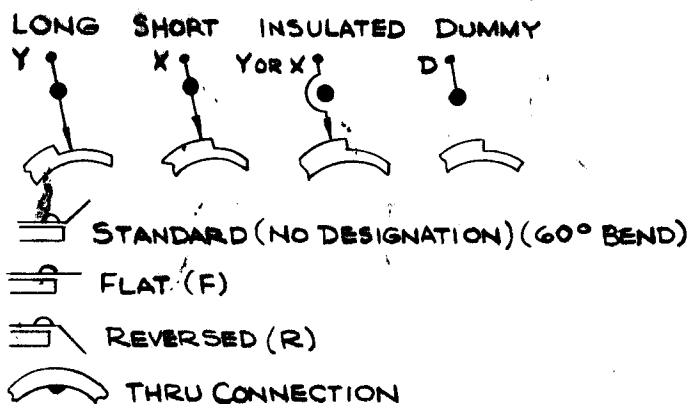
**ELECTRICAL**

- CURRENT RATING: CARRY: 5 AMPS RESISTIVE MAX.  
BREAK @ 24VDC: 2 AMP. RESISTIVE MAX.  
BREAK @ 115VDC: 1 AMP. RESISTIVE MAX.
- DIELECTRIC STRENGTH: 1000 V CLIP TO CLIP, 500V INSULATED  
CLIPS BACK TO BACK.

**COIL SPECIFICATIONS**

- SOLENOID SIZE: 5S
- COIL RESISTANCE @ 20°C: 4.91 Ω ± 5%
- VOLTAGE: 28 VDC
- GROSS STARTING TORQUE FOR 1/10 DUTY CYCLE AND 35° STROKE - 7.8 POUND INCHES
- DIELECTRIC STRENGTH: 1200 VRMS

**CLIP DESIGNATIONS**

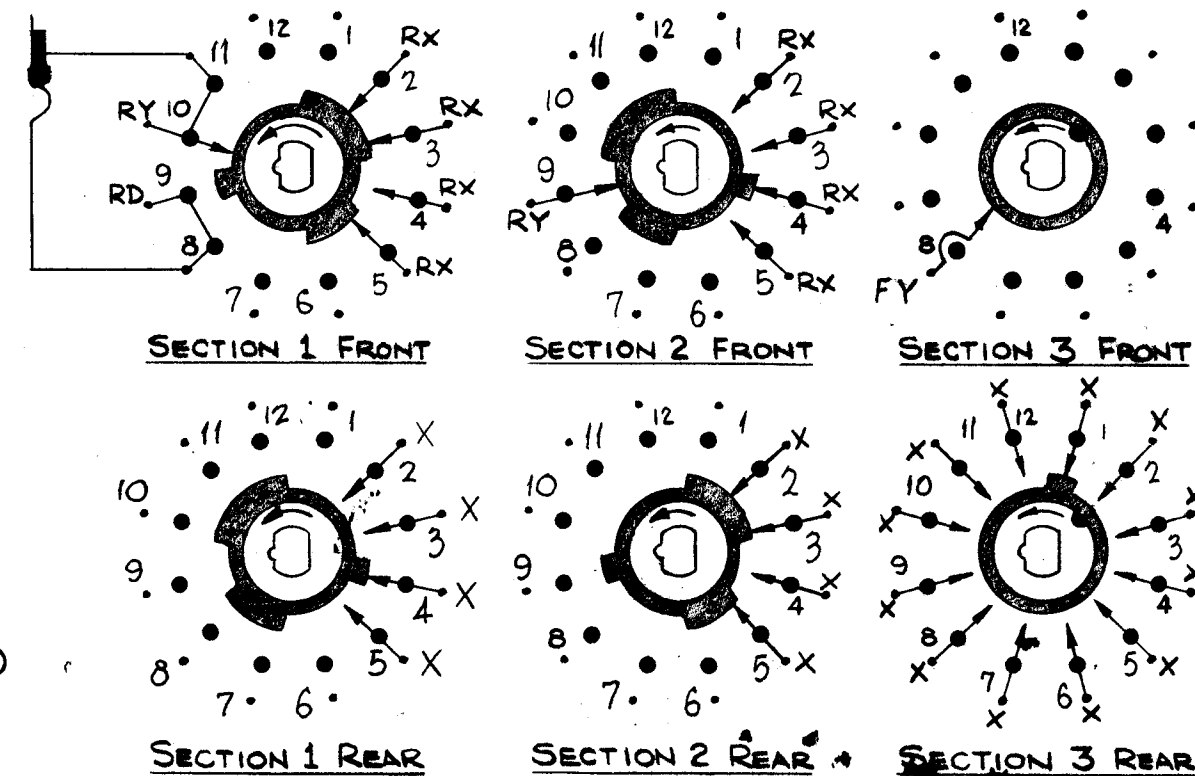


SW356

**REVISIONS**

SYM	DESCRIPTION	DATE	E.M.N. NO.	DRAFT	CHKD	APPD
Ø	ORIGINAL RELEASE FOR PRODUCTION	4/19/65				
A	CLERICAL CHANGE	5/25/65	A			
B	5 AMPS WAS 5 TO 10 AMPS. 2 AMPS WAS 5 AMPS. LETTER TO PIN 8 THROUGH CONN. SYMS. ADDED	8/2/65	14537			
C	REV. & UPDATED	3/8/68	18799			

- NOTE:**
1. VIEW WAFERS FROM SOLENOID END OF SWITCH.
  2. REAR SIDE IS VIEWED AS IF LOOKING THROUGH WAFERS, FROM SOLENOID END.
  3. ORIENTATION OF WAFER IS WITH PIN 1 IN THE ONE O'CLOCK POSITION AS VIEWED FROM THE SOLENOID END WITH CONNECTING WIRES OR TERMINALS FACING DOWN.
  4. ROTATION IN DIRECTION OF ARROW VIEWED FROM SOLENOID END.
  5. WAFERS SHOWN IN NO. 1 POSITION.



REQ'D.	ITEM	PART NUMBER	DESCRIPTION	SYMBOL
<b>POSE LIST OF MATERIAL</b>				
MATERIAL		<b>THE TECHNICAL MATERIEL CORP. MAMARONECK, NEW YORK</b>		
FINISH		<b>SWITCH, ROTARY, SOLENOID</b>		
UNLESS OTHERWISE SPECIFIED DIMENSIONS ARE IN INCHES AND INCLUDE CHEMICALLY APPLIED OR PLATED FINISHES		DRAWN H. AUSTIN CHECKED ELECT. DES. MECH. DES.	DATE 3-5-65 DATE 3-5-65 DATE DATE	FINAL APPROVAL DATE <b>SW356</b> SHEET
DECIMALS	TOLERANCES	FRACTIONS	± 1/64 ANGLES ± 0° 30'	
.X ± .05				
.XX ± .01				
.XXX ± .005				

**NOTES**

HFIR-1		
Q'TY./UNIT	MODEL USED ON	ASS'Y. NO.
SCALE	CODE C	S401-281 124243-001
THE CONTENTS OF THIS DRAWING ARE THE EXCLUSIVE PROPERTY OF THE TECHNICAL MATERIEL CORP. ITS UNAUTHORIZED USE OR REPRODUCTION IN WHOLE OR IN PART IS STRICTLY FORBIDDEN.		