

SWITCH SPECIFICATIONS

MECHANICAL

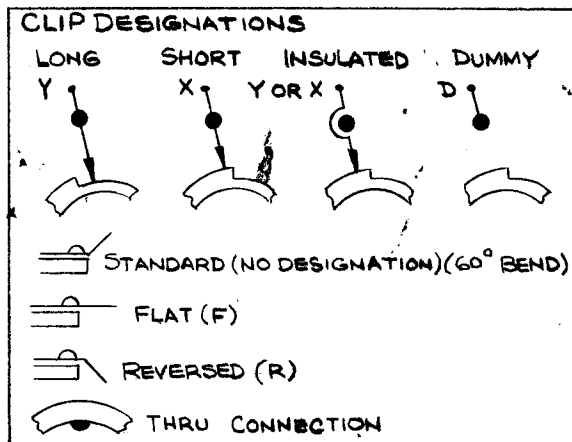
- NO. OF SECTIONS: 8
- NO. OF POSITIONS: 18
- ANGLE OF THROW: 20°
- CONTACT MATERIAL: SOLID SILVER ALLOY
- CONTACT TYPE: SECT. 1 SPECIAL, SECT. 2 THRU 8 NON-SHORTING
- WAFER MATERIAL: BAKELITE
- FINISH: 50 HOUR SALT SPRAY
- OPERATING TEMP.: -55°C TO 80°C

ELECTRICAL

- CURRENT RATING: CARRY: 10 TO 15 AMPS. RESISTIVE MAX.
BREAK @ 24VDC: 5 AMPS. RESISTIVE MAX.
BREAK @ 115VDC: 1 AMP. RESISTIVE MAX.
- DIELECTRIC STRENGTH: 1000V CLIP TO CLIP, 500V INSULATED BACK TO BACK CLIPS.

COIL SPECIFICATIONS

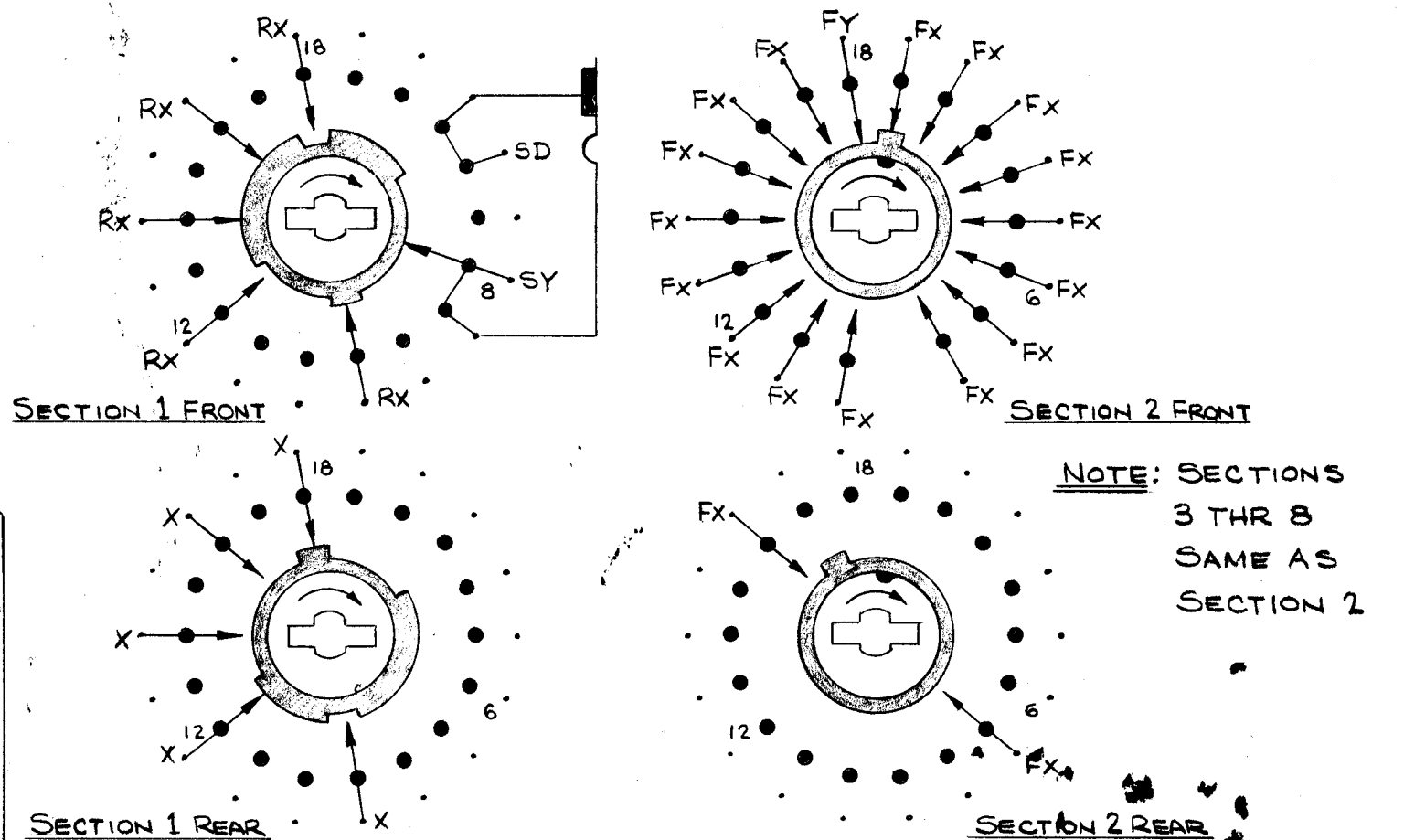
- SOLENOID SIZE: 5 S
- COIL RESISTANCE @ 20°C: 11.1 Ω ± 5%
- VOLTAGE: 28VDC ± 10%
- GROSS STARTING TORQUE FOR 1/4 DUTY CYCLE AND 25° STROKE -
6.6 POUND INCHES @ 20°C COIL TEMP.
- DIELECTRIC STRENGTH: 1200V RMS



A
SW355

REVISIONS					
SYM	DESCRIPTION	DATE	E.M.N. NO.	DRAFT	CHKD APPD
Ø	ORIGINAL RELEASE FOR PRODUCTION	4/14/65	Ø	HLA	
A	5 15/32 WAS 5 3/4; ADD. 3/16 MAX. TO SHAFT EXT.	1/24/65	15608	HLA	HLA

- NOTE:**
- VIEW WAFERS FROM SOLENOID END OF SWITCH.
 - REAR SIDE IS VIEWED AS IF LOOKING THROUGH WAFER, FROM SOLENOID END.
 - ORIENTATION OF WAFER IS WITH PIN 1 IN THE ONE O'CLOCK POSITION AS VIEWED FROM THE SOLENOID END WITH CONNECTING WIRES OR TERMINALS FACING DOWN.
 - ROTATION IN DIRECTION OF ARROW VIEWED FROM SOLENOID END.
 - WAFERS SHOWN IN NO. 1 POSITION.



NOTE: SECTIONS 3 THRU 8 SAME AS SECTION 2

REQ'D.	ITEM	PART NUMBER	DESCRIPTION	SYMBOL
LIST OF MATERIAL				
MATERIAL			THE TECHNICAL MATERIEL CORP. MAMARONECK, NEW YORK	
FINISH			TITLE SWITCH, ROTARY, SOLENOID	
UNLESS OTHERWISE SPECIFIED DIMENSIONS ARE IN INCHES AND INCLUDE CHEMICALLY APPLIED OR PLATED FINISHES			DRAWN H. AUSTIN DATE 3-15-65	FINAL APPROVAL <i>[Signature]</i> DATE 4/14/65
DECIMALS .X ± .05 .XX ± .01 .XXX ± .005			TOLERANCES ± 1/64 ANGLES ± 0° 30'	DATE 4/14/65 DATE 1/14/65 DATE 1/14/65
THE CONTENTS OF THIS DRAWING ARE THE EXCLUSIVE PROPERTY OF THE TECHNICAL MATERIEL CORP. ITS UNAUTHORIZED USE OR REPRODUCTION IN WHOLE OR IN PART IS STRICTLY FORBIDDEN.			SHEET SW355 REV. LTR. A	

NOTES

RTTD		
Q'TY./UNIT	MODEL USED ON	ASS'Y. NO.
SCALE	CODE C	S401-281 122720-001