

SWITCH SPECIFICATIONS

MECHANICAL

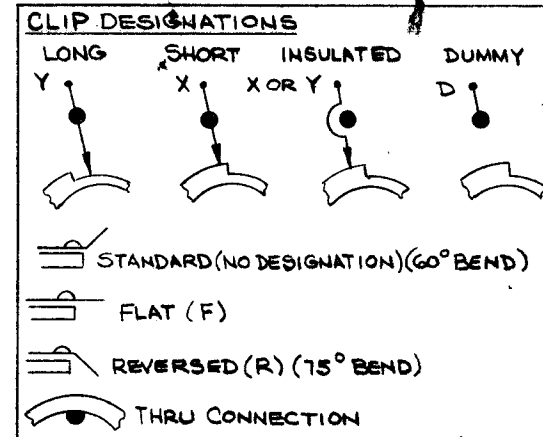
- No. OF SECTIONS: 4
- No. OF POSITIONS: 16
- ANGLE OF THROW: 22.5°
- CONTACT MATERIAL: SILVER ALLOY.
- WAFER MATERIAL: PHENOLIC.
- FINISH: 50 HOUR SALT SPRAY
- OPERATING TEMP.: -55°C TO 80°C

ELECTRICAL

- CURRENT RATING:**
- CARRY: 5 AMPS. RESISTIVE MAX.
 - BREAK @ 24VDC: 2 AMPS RESISTIVE MAX.
 - BREAK @ 115VDC: 1 AMP. RESISTIVE MAX.
- DIELECTRIC STRENGTH: 1000VRMS CLIP TO CLIP, 500V INSULATED BACK TO BACK CLIPS**

COIL SPECIFICATIONS

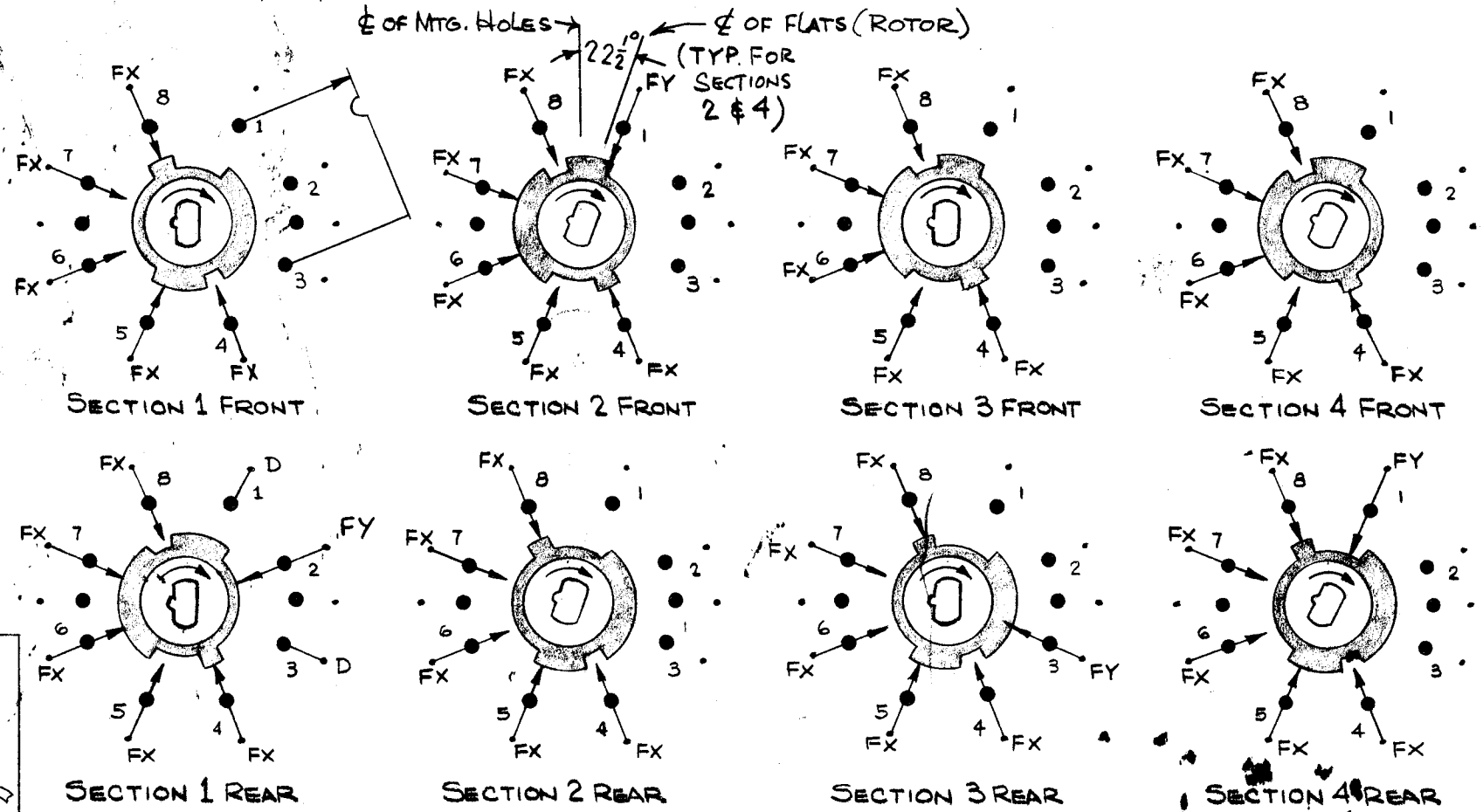
- SOLENOID SIZE: 5S
- COIL RESISTANCE @ 20°C: 4.91 Ω ± 5%
- VOLTAGE: 28V DC
- GROSS STARTING TORQUE FOR 1/10 DUTY CYCLE AND 30° STROKE - 8.7 POUND INCHES @ 20°C COIL TEMP.
- DIELECTRIC STRENGTH: 1200V RMS



SW354

REVISIONS						
SYM	DESCRIPTION	DATE	E.M.N. NO.	DRAFT	CHKD	APPD
Ø	ORIGINAL RELEASE FOR PRODUCTION	4/19/65	Ø	Ø		
A	ON PICT. SPACERS WERE 3/16 TYP.	8/29/65	14125	Ø	Ø	Ø
B	ON ELE SPEC. CARRY WAS 10 TO 15 AMPS. BRK @ 24 VDC WAS 5 AMPS	8/25/65	14733	JK	Ø	Ø
C	SPECS SOLID SILVER CONTACT INTL. BAKELITE WENTL. DELETED	11/1/65	15070	H.V.V.	Ø	Ø

- NOTE:**
- VIEW WAFERS FROM SOLENOID END OF SWITCH.
 - REAR SIDE IS VIEWED AS IF LOOKING THROUGH WAFER, FROM SOLENOID END.
 - ORIENTATION OF WAFER IS WITH PIN 1 IN THE ONE O'CLOCK POSITION AS VIEWED FROM THE SOLENOID END WITH CONNECTING WIRES OR TERMINALS FACING DOWN.
 - ROTATION IN DIRECTION OF ARROW VIEWED FROM SOLENOID END.
 - WAFERS SHOWN IN NO. 1 POSITION.



REQ'D.	ITEM	PART NUMBER	DESCRIPTION	SYMBOL
Eaton LIST OF MATERIAL				
MATERIAL			THE TECHNICAL MATERIEL CORP. MAMARONECK, NEW YORK	
FINISH			TITLE SWITCH, ROTARY, SOLENOID	
UNLESS OTHERWISE SPECIFIED DIMENSIONS ARE IN INCHES AND INCLUDE CHEMICALLY APPLIED OR PLATED FINISHES			DRAWN H. AUSTIN CHECKED ELECT. DES. MECH. DES.	DATE 3-12-65 DATE 3-12-65 DATE DATE DATE
DECIMALS .X ± .05 .XX ± .01 .XXX ± .005			FRACTIONS ± 1/64 ANGLES ± 0° 30'	
TOLERANCES UNLESS OTHERWISE SPECIFIED DIMENSIONS ARE IN INCHES AND INCLUDE CHEMICALLY APPLIED OR PLATED FINISHES			FINAL APPROVAL DATE 4/20/65	SHEET SW354 C
THE CONTENTS OF THIS DRAWING ARE THE EXCLUSIVE PROPERTY OF THE TECHNICAL MATERIEL CORP. ITS UNAUTHORIZED USE OR REPRODUCTION IN WHOLE OR IN PART IS STRICTLY FORBIDDEN.			REV. LTR.	

NOTES

HF SR-1	
Q'TY./UNIT	MODEL USED ON
SCALE	ASSY. NO.
	CODE
	5401-281
	C
	125153-001