

STANDARD DRAWING

TMC SWITCH PART NUMBER	MFR. SWITCH PART NUMBER	TMC ACTUATOR PART NUMBER	MFR. ACTUATOR PART NUMBER	SWITCH FORM
SW353-1	1SX1-T	—	—	SPDT
SW353-2	1SX1-T	SW353-AC1	JX-25	SPDT
SW353-3	1SX1-T	SW353-AC2	JX-512	DPDT

A
SW353

REVISIONS					
SYM	DESCRIPTION	DATE	E.M.N. NO.	DRAFT	CHKD
X	EXPERIMENTAL RELEASE		X	J.L.	
Q	ORIGINAL RELEASE FOR PRODUCTION	9-9-64	Q	J. L.	
A	ADDED SW353-3 TO CHART. ADDED STYLE 2 TO PICT.	9-13-66	16835	RME	J.C.

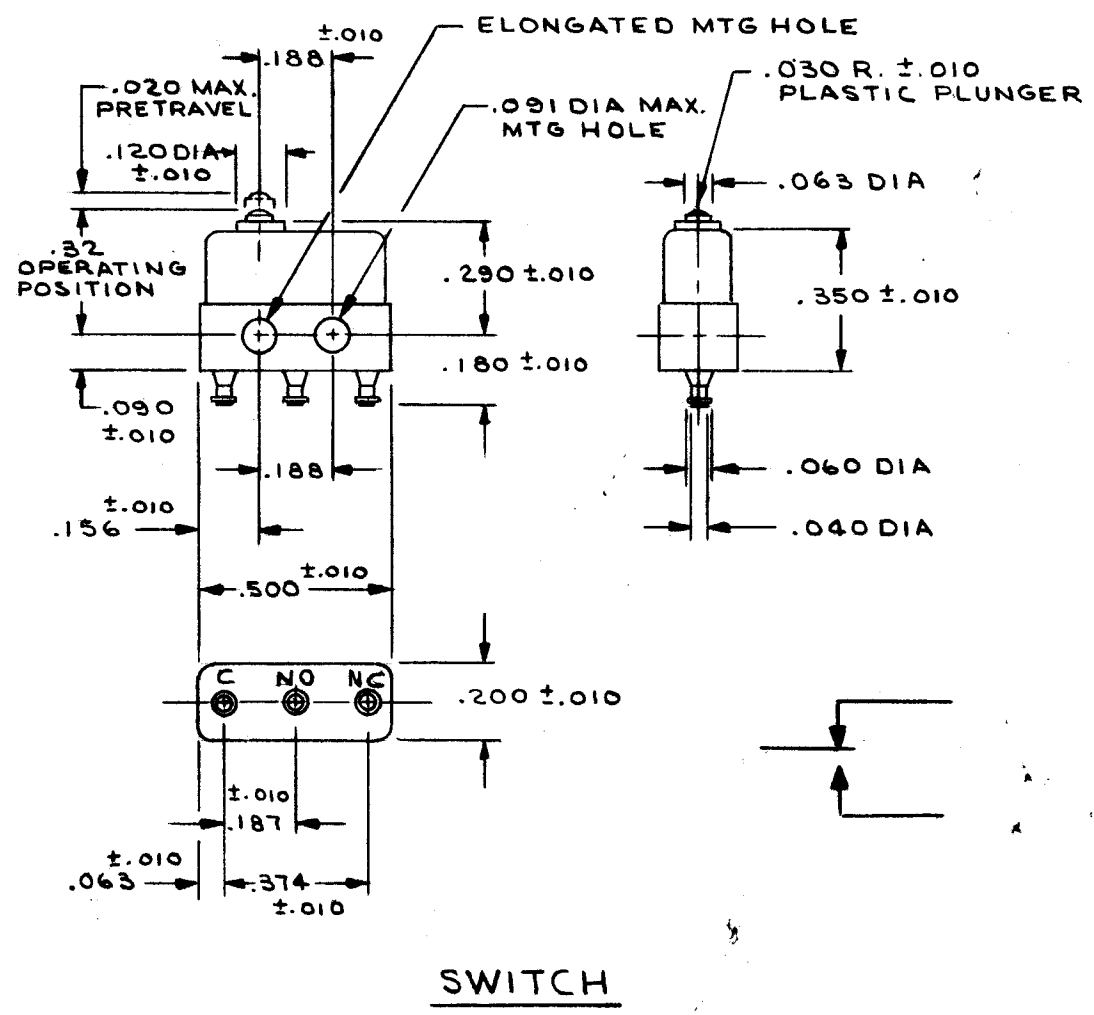
SPECIFICATIONS

CONTACT ARRANGEMENT: SPDT
 CURRENT RATING: 5.0 AMPS @ 125 VAC, 250 VAC
 7 AMPS RESISTIVE
 4 AMPS INDUCTIVE @ 28VDC

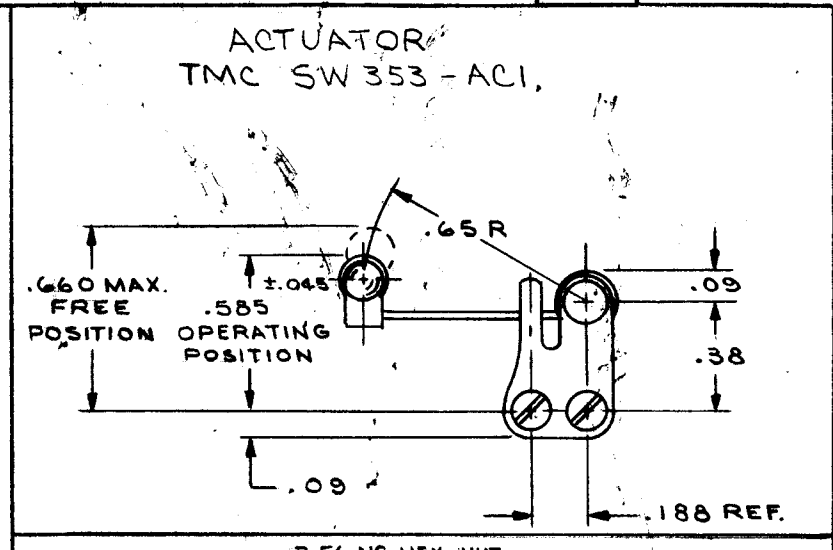
MATERIAL:
 BODY- PLASTIC
 ACTUATOR- STAINLESS STEEL 302

OPERATING FORCE: 5 OUNCES MAX.
 RELEASE FORCE: 4 OUNCES MIN.

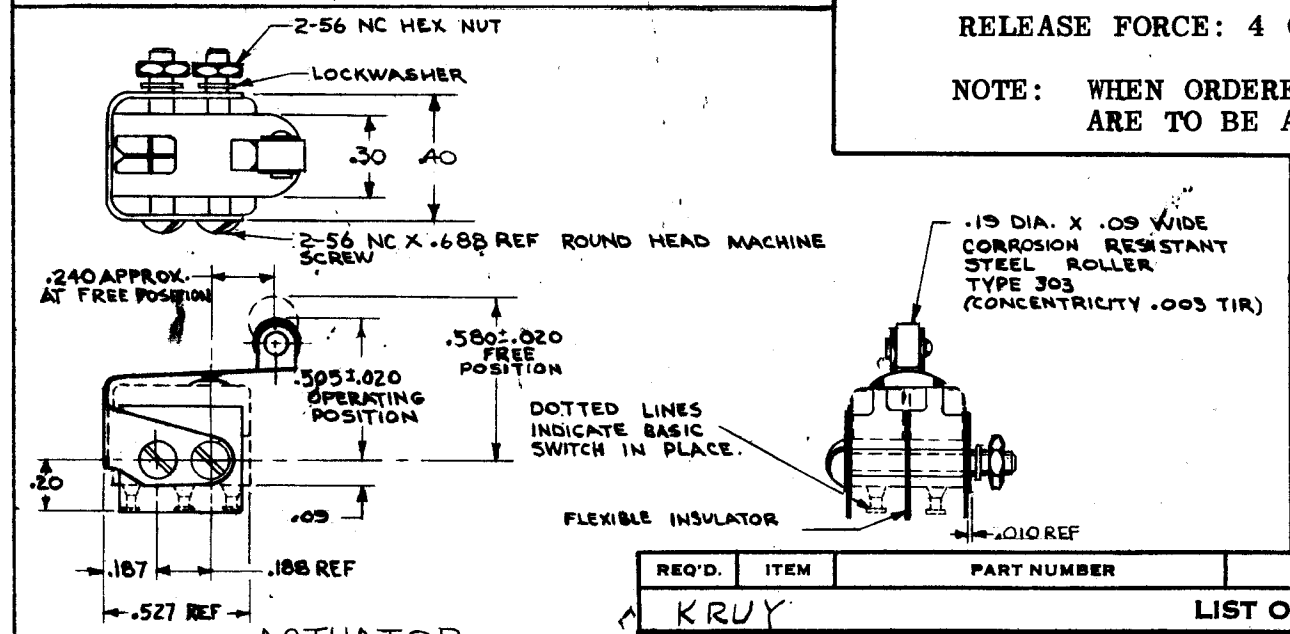
NOTE: WHEN ORDERED AS A SET, SWITCH AND ACTUATOR ARE TO BE ASSEMBLED OR PACKAGED TOGETHER.



SWITCH



ACTUATOR
TMC SW353-AC1



ACTUATOR
TMC SW353-AC2

REQ'D.	ITEM	PART NUMBER	DESCRIPTION	SYMBOL
LIST OF MATERIAL				
KRU Y			THE TECHNICAL MATERIEL CORP. MAMARONECK, NEW YORK	
MATERIAL			TITLE SWITCH, SENSITIVE	
FINISH			DRAWN J. LESHINSKI	
UNLESS OTHERWISE SPECIFIED DIMENSIONS ARE IN INCHES AND INCLUDE CHEMICALLY APPLIED OR PLATED FINISHES			DATE 9-9-64	FINAL APPROVAL RME
DECIMALS .X ± .05 .XX ± .01 .XXX ± .005			DATE 9/9/64	DATE
FRACTIONS ± 1/64 ANGLES ± 0° 30'			DATE 9/9/64	DATE
TOLERANCES			ELECT. DES. J.C.	DATE 9/9/64
SCALE			MECH. DES. J.C.	DATE 9/9/64
Q'TY./UNIT			SHEET	
MODEL USED ON			SW353 - A	
ASS'Y. NO.			REV. LTR.	
CODE C 5401-18			9/9/64	

NOTES

THE CONTENTS OF THIS DRAWING ARE THE EXCLUSIVE PROPERTY OF THE TECHNICAL MATERIEL CORP. ITS UNAUTHORIZED USE OR REPRODUCTION IN WHOLE OR IN PART IS STRICTLY FORBIDDEN.