

DESG.	DIMENSION	TOL.	REMARK
A	7/8	±.015	SHAFT LG. FROM MTG. SURFACE
B	3/8	±.005	BUSH. LG.
C	3/8	±.015	FLAT LG. (IF REQ.)
D	120°	±2°	FLAT ANGLE (IF REQ.)
E	7/32	±.002	FLAT ( IF REQUIRED )
F	17/32	±.010	KEY LOCATION (IF REQ.)
G	180°		KEY LOCATION (IF REQ.)
M	.155	±.010	
N	5/32	±.093	REAR SCR. EXT.
Q	1/8	±.031	REAR SHAFT EXT.
R	1/4		1st SEC. SPACING

TMC PART NUMBER: SW 352 STAMP ON FRONT PLATE  
 FRONT PLATE SHAPE: ROUND OR OBLONG  
 MECHANICAL SPECIFICATIONS: OPTIONAL ✓

NUMBER OF SECTIONS- 1  
 NUMBER OF POSITIONS- 2  
 ANGLE OF THROW- 60°

CONTACTS:  
 SHORTING TYPE, SECTIONS \_\_\_\_\_  
 NON SHORTING TYPE, SECTIONS ✓  
 SILVER PLATED BRASS, SECTIONS ✓  
 SILVER ALLOY, SECTIONS \_\_\_\_\_

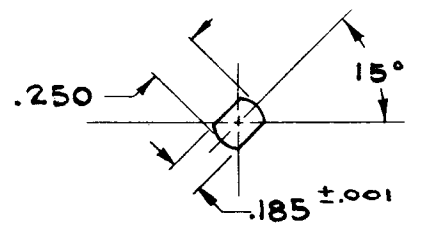
WAFERS:  
 BAKELITE, SECTIONS \_\_\_\_\_  
 CERAMIC, SECTIONS \_\_\_\_\_  
 MYCALEX, SECTIONS ✓  
 IMPREGNATION (IF REQ.) \_\_\_\_\_

FINISH REQUIREMENTS:  
 ARMY NAVY COMMERCIAL ✓  
 SALT TEST ( IF REQ. ) \_\_\_\_\_

HARDWARE, TO BE SUPPLIED BY MANUFACTURER:  
 1 QUAN. 3/8 -32 NUTS 1/2 ACROSS FLATS  
 MATERIAL BRASS PLATING NICKEL  
 1 QUAN. 3/8 INTERNAL TOOTH LOCKWASHER  
 MATERIAL BRASS PLATING NICKEL

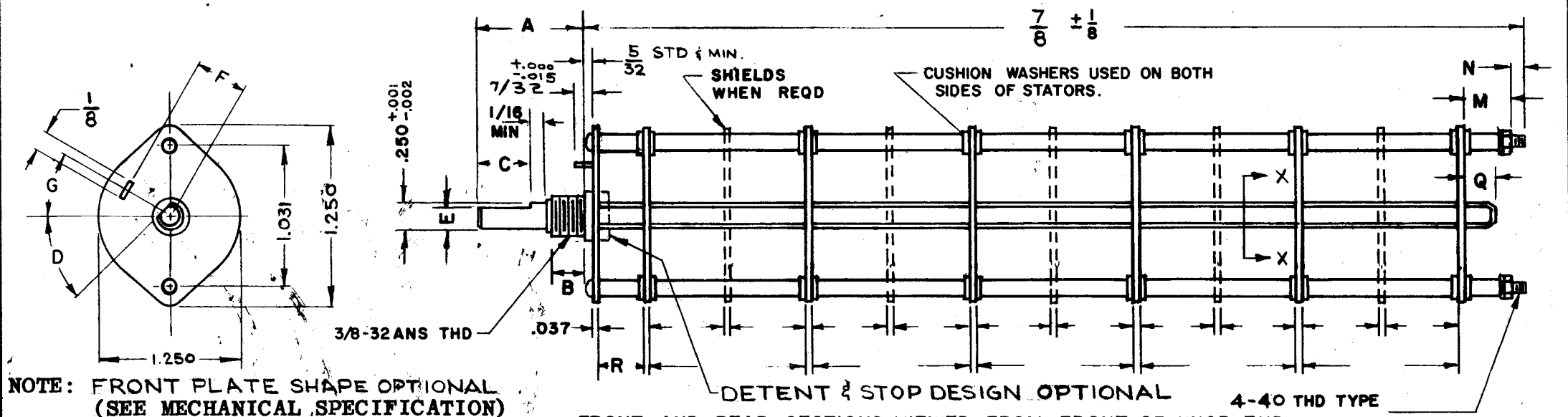
ELECTRICAL SPECIFICATIONS:  
 MAXIMUM RATED VOLTAGE \_\_\_\_\_  
 MAXIMUM RATED CURRENT \_\_\_\_\_

NOTE:  
 FOR S401-13 ("F" TYPE) SWITCHES, THE SHAFT POSITION MUST BE SPECIFIED ON DETAIL "XX" BELOW.

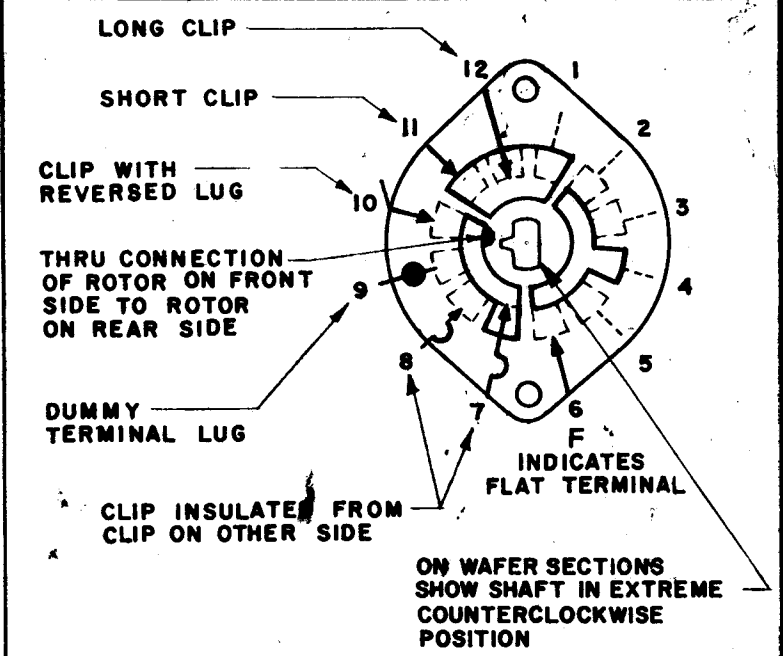


— DETAIL "XX" —  
 SWITCH FULLY CCW

NOTES



NOTE: FRONT PLATE SHAPE OPTIONAL (SEE MECHANICAL SPECIFICATION)



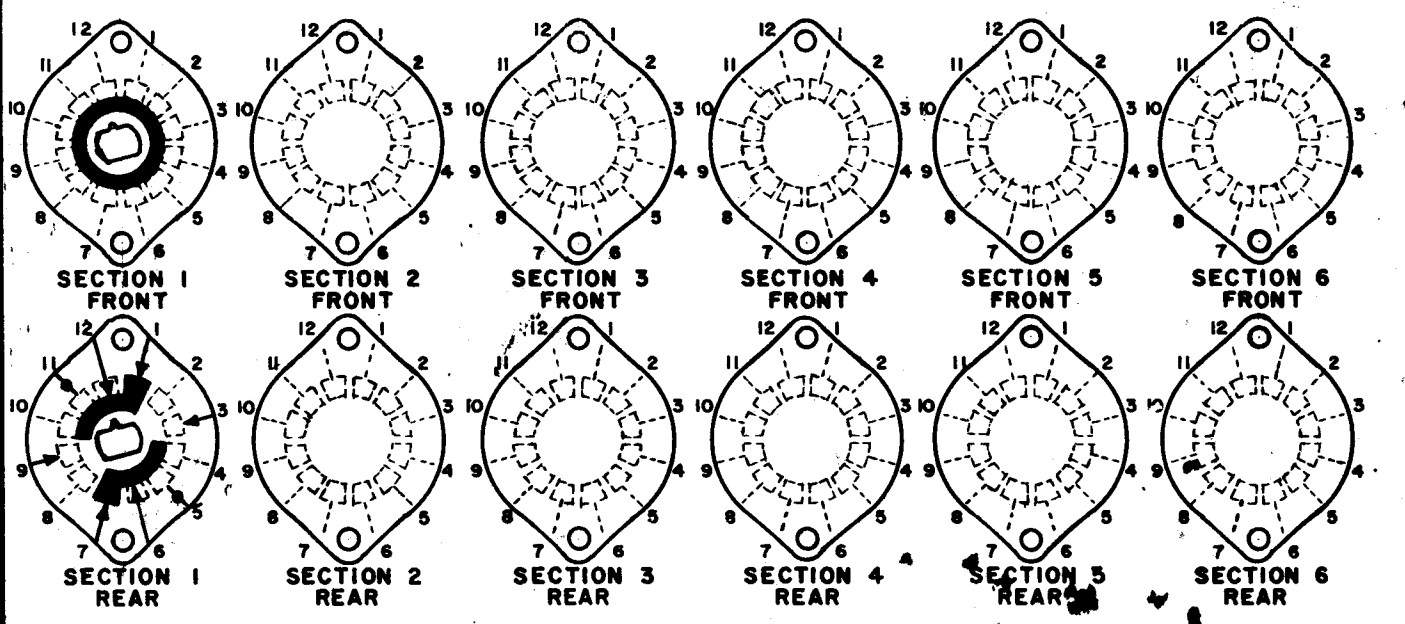
SYMBOLS USED IN MARKING PRINT

2	SBS-7	A2872
QTY./UNIT	MODEL USED ON	ASS'Y. NO.
SCALE	CODE	

THE CONTENTS OF THIS DRAWING ARE THE EXCLUSIVE PROPERTY OF THE TECHNICAL MATERIEL CORP. ITS UNAUTHORIZED USE OR REPRODUCTION IN WHOLE OR IN PART IS STRICTLY FORBIDDEN.

REVISIONS						
SYM	DESCRIPTION	DATE	E.M.N. NO.	DRAFT	CHKD	APPD
X	EXPER. RELEASE	4-14-64	1			
Ø	ORIGINAL RELEASE FOR PRODUCTION	11-1-65	Ø			

FRONT AND REAR SECTIONS VIEWED FROM FRONT OR KNOB END OF SWITCH IN EXTREME COUNTERCLOCKWISE POSITION.



SWITCH, ROTARY - 12 POINT TYPE

MATERIAL	THE TECHNICAL MATERIEL CORP.				
	O. POSE. MAMARONECK, NEW YORK				
FINISH	TITLE SWITCH, ROTARY IF SECTION				
UNLESS OTHERWISE SPECIFIED DIMENSIONS ARE IN INCHES AND INCLUDE CHEMICALLY APPLIED OR PLATED FINISHES	DRAWN	DATE	FINAL APPROVAL	DATE	
	T. RAMIREZ	4-13-64		10/30/65	
DECIMALS .X ± .05 .XX ± .01 .XXX ± .005 FRACTIONS ± 1/64 ANGLES ± 0° 30'	CHECKED	DATE	ELECT. DES.		DATE
		10/26/65	SW 352		
TOLERANCES		MECH. DES.	DATE	SHEET	
				REV. LTR.	
		M/L wmg	10/27/65		