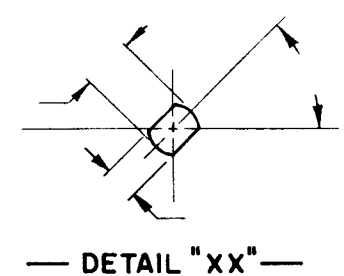
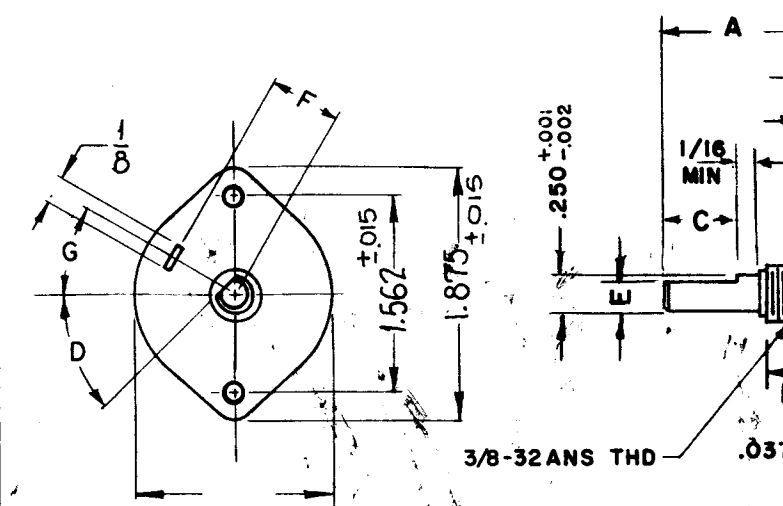


DESG.	DIMENSION	TOL.	REMARK
A	1"	±.015	SHAFT LG. FROM MTG. SURFACE
B	.375	±.005	BUSH. LG.
C	1/2	±.015	FLAT LG. (IF REQ.)
D	330°	±2°	FLAT ANGLE (IF REQ.)
E	.220	±.002	FLAT (IF REQUIRED)
F	.531	±.010	KEY LOCATION (IF REQ.)
G	75°		KEY LOCATION (IF REQ.)
M	.187	±.010	
N	.125	±.093	REAR SCR. EXT.
Q	.125	±.031	REAR SHAFT EXT.
R	7/16		1st SEC. SPACING

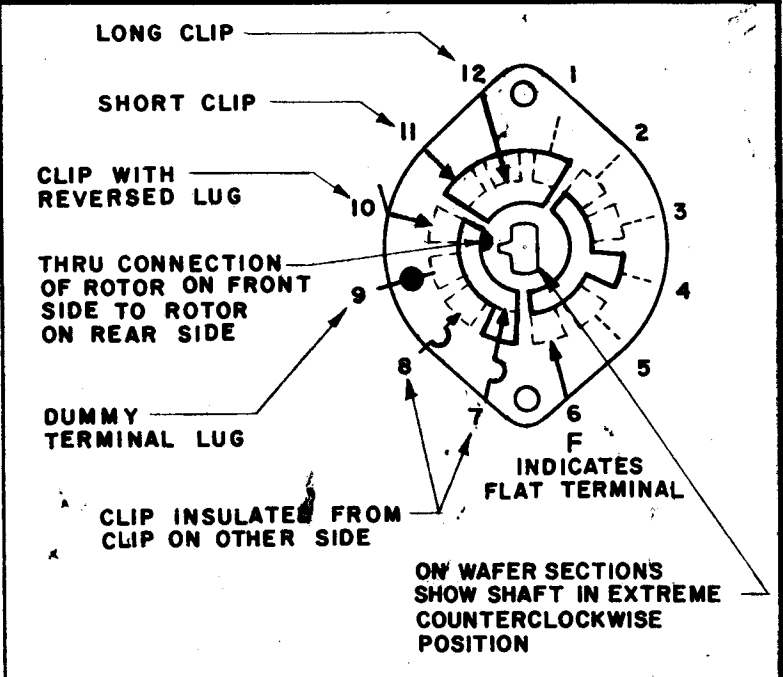
TMC PART NUMBER: SW-350 STAMP ON FRONT PLATE
 FRONT PLATE SHAPE: ROUND OR OBLONG X
 MECHANICAL SPECIFICATIONS:
 NUMBER OF SECTIONS- 2
 NUMBER OF POSITIONS- 11
 ANGLE OF THROW- 30°
 CONTACTS:
 SHORTING TYPE, SECTIONS _____
 NON SHORTING TYPE, SECTIONS 2
 SILVER PLATED BRASS, SECTIONS 2
 SILVER ALLOY, SECTIONS _____
 WAFERS:
 BAKELITE, SECTIONS _____
 CERAMIC, SECTIONS 2
 MYCALEX, SECTIONS _____
 IMPREGNATION (IF REQ.) _____
 FINISH REQUIREMENTS:
 ARMY NAVY X COMMERCIAL _____
 SALT TEST (IF REQ.) _____
 HARDWARE, TO BE SUPPLIED BY MANUFACTURER:
 1 QUAN. 3/8-32 NUTS 1/2 ACROSS FLATS
 MATERIAL STEEL PLATING CADMIUM CHROMATE
 1 QUAN. 3/8 INTERNAL TOOTH LOCKWASHER
 MATERIAL STEEL PLATING CADMIUM CHROMATE
 ELECTRICAL SPECIFICATIONS:
 MAXIMUM RATED VOLTAGE 125 VAC
 MAXIMUM RATED CURRENT 5 AMP
 NOTE: TYPE "H"
 FOR S401-13 ("F" TYPE) SWITCHES, THE SHAFT POSITION MUST BE SPECIFIED ON DETAIL "XX" BELOW.



NOTES



NOTE: OBLONG TYPE FRONT PLATE SHOWN, (SEE MECHANICAL SPECIFICATION)

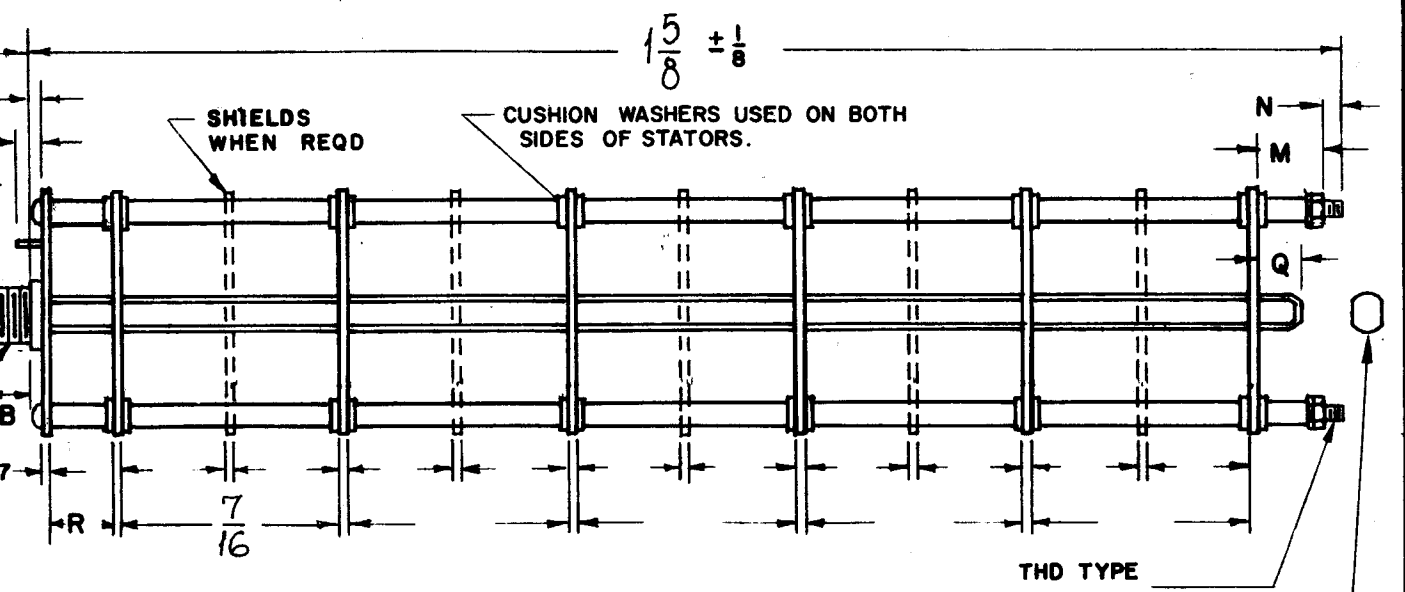


SYMBOLS USED IN MARKING PRINT

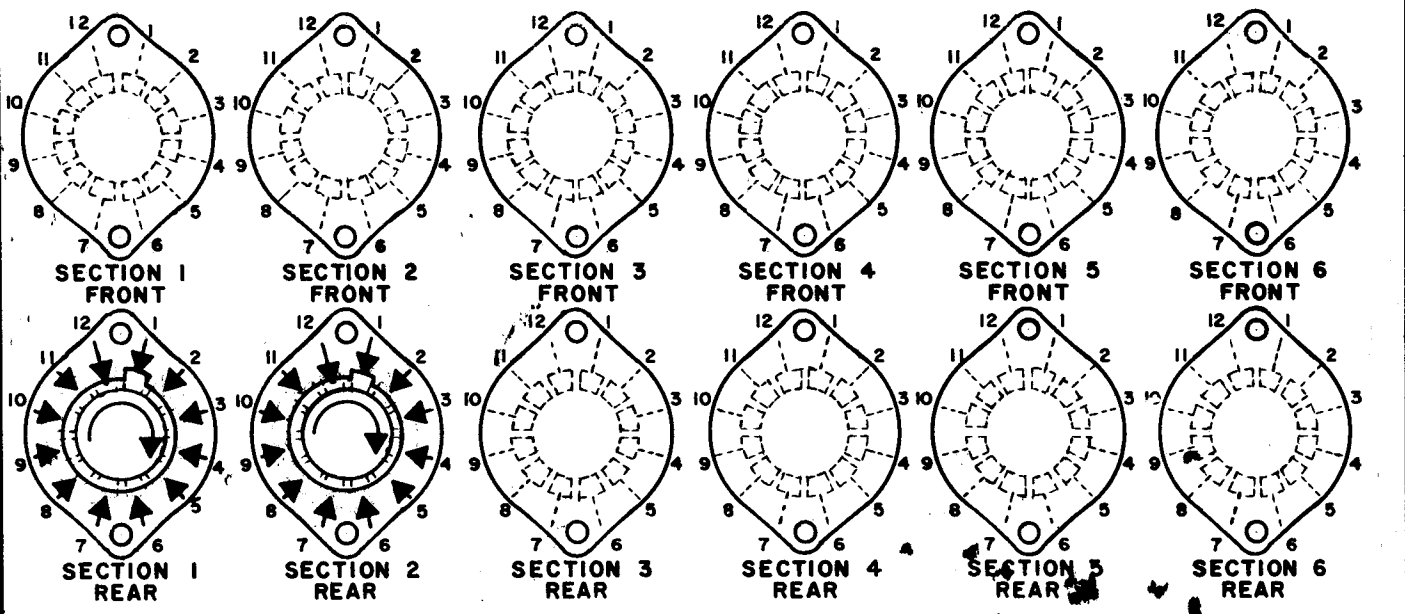
QTY./UNIT	MODEL USED ON	ASS'Y. NO.
SCALE	CODE	

THE CONTENTS OF THIS DRAWING ARE THE EXCLUSIVE PROPERTY OF THE TECHNICAL MATERIEL CORP. ITS UNAUTHORIZED USE OR REPRODUCTION IN WHOLE OR IN PART IS STRICTLY FORBIDDEN.

REVISIONS						
SYM -	DESCRIPTION	DATE	E.M.N. NO.	DRAFT	CHKD	APPD
X	EXP. RELEASE	1-12-65		SRG		
Ø	ORIGINAL RELEASE	11-29-65	Ø			



FRONT AND REAR SECTIONS VIEWED FROM FRONT OR KNOB END OF SWITCH IN EXTREME COUNTERCLOCKWISE POSITION. SEE NOTE (DET. "XX")



SWITCH, ROTARY - 12 POINT TYPE

MATERIAL	THE TECHNICAL MATERIEL CORP. BUDETTI MAMARONECK, NEW YORK			
FINISH	TITLE SWITCH, ROTARY (MULTIMETER)			
UNLESS OTHERWISE SPECIFIED DIMENSIONS ARE IN INCHES AND INCLUDE CHEMICALLY APPLIED OR PLATED FINISHES	DRAWN	DATE	FINAL APP'D	DATE
	John C Biele	1-5-65	[Signature]	1/29/65
DECIMALS .X ± .05 .XX ± .01 .XXX ± .005	CHECKED	DATE	SW350	Ø
	[Signature]	11/17/65		
FRACTIONS ± 1/64 ANGLES ± 0° 30'	ELECT. DES.	DATE	SHEET	REV. LTR.
	[Signature]	11/29/65		