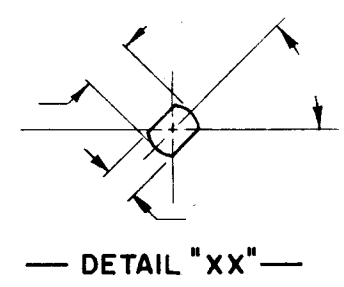


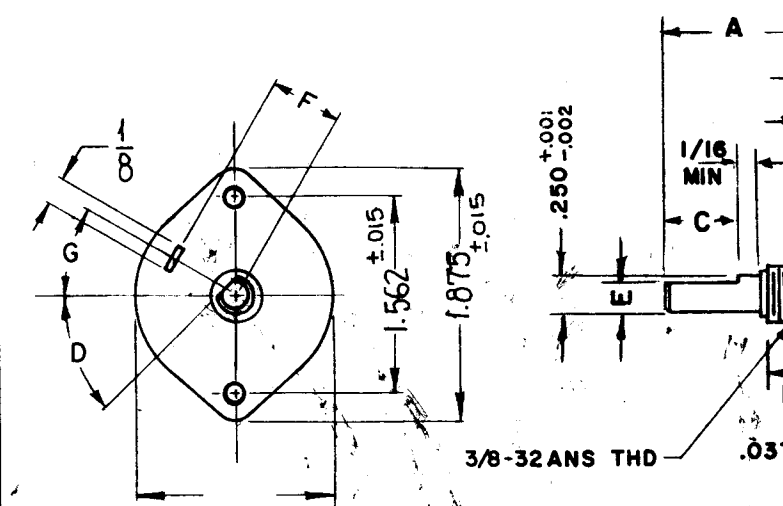
| DESG. | DIMENSION | TOL. | REMARK |
|-------|-----------|-------|-----------------------------|
| A | 1" | ±.015 | SHAFT LG. FROM MTG. SURFACE |
| B | .375 | ±.005 | BUSH. LG. |
| C | 1/2 | ±.015 | FLAT LG. (IF REQ.) |
| D | 210° | ±2° | FLAT ANGLE (IF REQ.) |
| E | .220 | ±.002 | FLAT (IF REQUIRED) |
| F | .531 | ±.010 | KEY LOCATION (IF REQ.) |
| G | 60° | | KEY LOCATION (IF REQ.) |
| M | .187 | ±.010 | |
| N | .125 | ±.093 | REAR SCR. EXT. |
| Q | .125 | ±.031 | REAR SHAFT EXT. |
| R | 7/16 | ±1/64 | 1st SEC. SPACING |

TMC PART NUMBER: SW-349 STAMP ON FRONT PLATE
 FRONT PLATE SHAPE: ROUND OR OBLONG X
 MECHANICAL SPECIFICATIONS:
 NUMBER OF SECTIONS- 1
 NUMBER OF POSITIONS- 3
 ANGLE OF THROW- 30°
 CONTACTS:
 SHORTING TYPE, SECTIONS _____
 NON SHORTING TYPE, SECTIONS 1
 SILVER PLATED BRASS, SECTIONS 1
 SILVER ALLOY, SECTIONS _____
 WAFERS:
 BAKELITE, SECTIONS _____
 CERAMIC, SECTIONS 1
 MYCALEX, SECTIONS _____
 IMPREGNATION (IF REQ.) _____
 FINISH REQUIREMENTS:
 ARMY NAVY X COMMERCIAL _____
 SALT TEST (IF REQ.) _____
 HARDWARE, TO BE SUPPLIED BY MANUFACTURER:
 1 QUAN. 3/8 -32 NUTS 1/2 ACROSS FLATS
 MATERIAL STEEL PLATING CADMIUM CHROMATE
 1 QUAN. 3/8 INTERNAL TOOTH LOCKWASHER
 MATERIAL STEEL PLATING CADMIUM CHROMATE
 ELECTRICAL SPECIFICATIONS:
 MAXIMUM RATED VOLTAGE 125VAC
 MAXIMUM RATED CURRENT 5AMPS

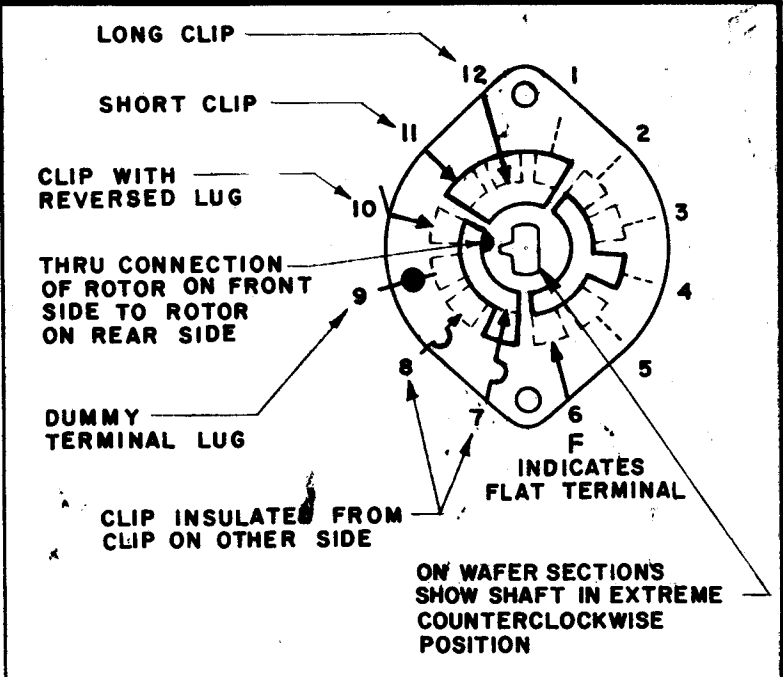
NOTE: TYPE "H"
 FOR S401-13 ("F" TYPE) SWITCHES, THE SHAFT POSITION MUST BE SPECIFIED ON DETAIL "XX" BELOW.



NOTES



NOTE: OBLONG TYPE FRONT PLATE SHOWN, (SEE MECHANICAL SPECIFICATION)

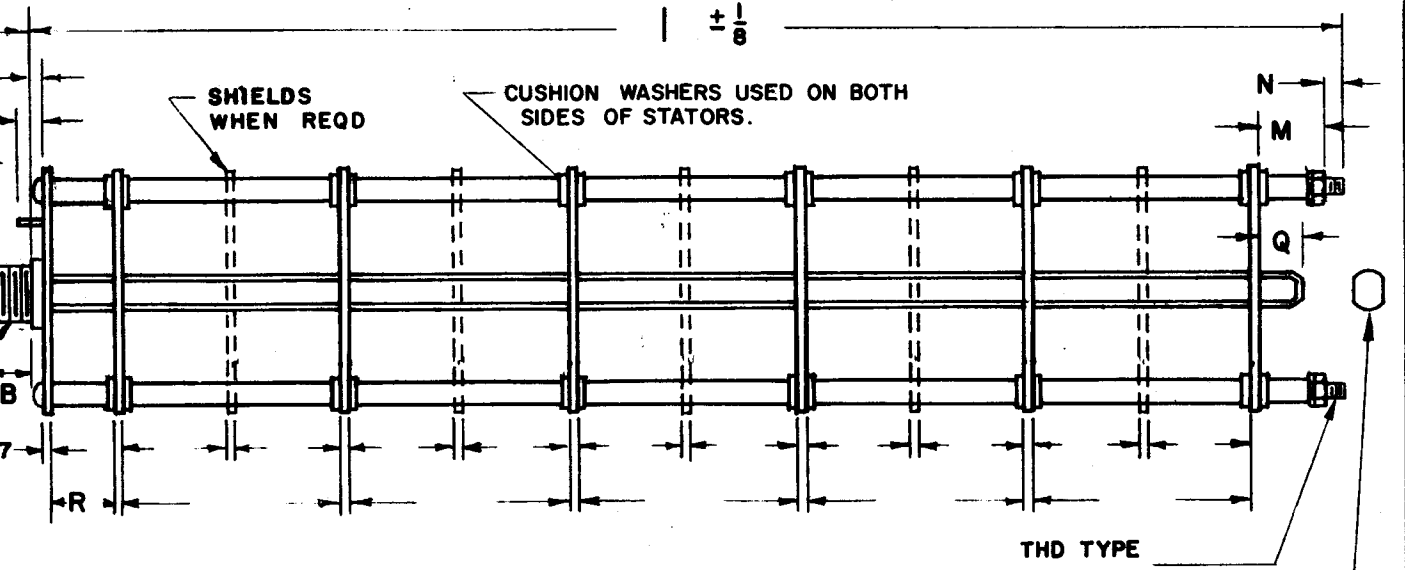


SYMBOLS USED IN MARKING PRINT

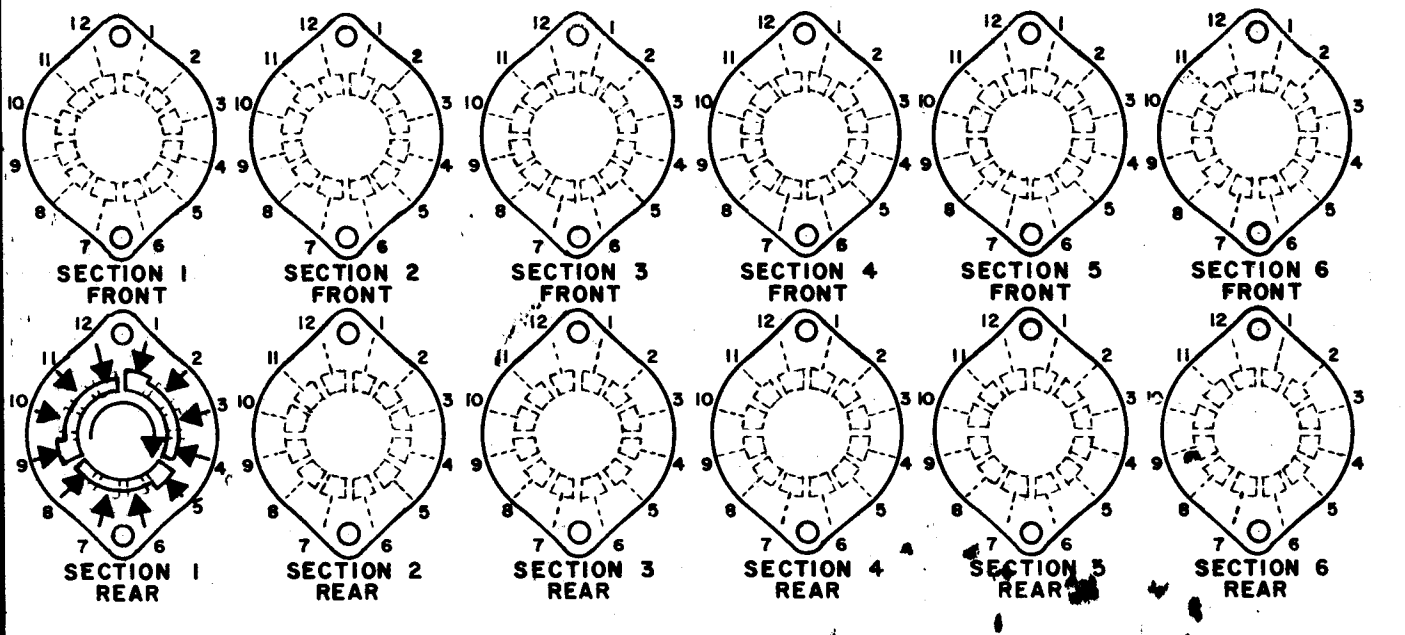
| | | |
|------------|---------------|------------|
| 1 | VLLA-1 | |
| Q'TY./UNIT | MODEL USED ON | ASS'Y. NO. |
| SCALE | CODE | |

THE CONTENTS OF THIS DRAWING ARE THE EXCLUSIVE PROPERTY OF THE TECHNICAL MATERIEL CORP. ITS UNAUTHORIZED USE OR REPRODUCTION IN WHOLE OR IN PART IS STRICTLY FORBIDDEN.

| REVISIONS | | | | | |
|-----------|------------------|----------|------------|-------|------|
| SYM | DESCRIPTION | DATE | E.M.N. NO. | DRAFT | CHKD |
| X | EXP. RELEASE | 1-12-65 | | SRG | |
| Ø | ORIGINAL RELEASE | 11-29-65 | Ø | | JH |



FRONT AND REAR SECTIONS VIEWED FROM FRONT OR KNOB END OF SWITCH IN EXTREME COUNTERCLOCKWISE POSITION. SEE NOTE (DET. "XX")



SWITCH, ROTARY - 12 POINT TYPE

| | | | | |
|---|--|----------|--------------------|-----------|
| MATERIAL | THE TECHNICAL MATERIEL CORP. BUDETTI MAMARONECK, NEW YORK | | | |
| FINISH | TITLE SWITCH, ROTARY (IPA PLATE METER) | | | |
| UNLESS OTHERWISE SPECIFIED DIMENSIONS ARE IN INCHES AND INCLUDE CHEMICALLY APPLIED OR PLATED FINISHES | DRAWN | DATE | FINAL APPROVAL | DATE |
| | John C Biele | 1-5-65 | <i>[Signature]</i> | 11/29/65 |
| DECIMALS .X ± .05 .XX ± .01 .XXX ± .005 | CHECKED | DATE | SW349 | Ø |
| | <i>[Signature]</i> | 11/17/65 | | |
| FRACTIONS ± 1/64 ANGLES ± 0° 30' | ELECT. DES. | DATE | SHEET | REV. LTR. |
| | <i>[Signature]</i> | 11/29/65 | | |