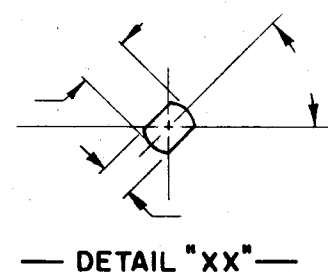


DESG.	DIMENSION	TOL.	REMARK
A	.875	±.015	SHAFT LG. FROM MTG. SURFACE
B	.375	±.005	BUSH. LG.
C		±.015	FLAT LG. (IF REQ.)
D		±2°	FLAT ANGLE (IF REQ.)
E		±.002	FLAT (IF REQUIRED)
F		±.010	KEY LOCATION (IF REQ.)
G			KEY LOCATION (IF REQ.)
M	.125	±.010	
N	.312	±.093	REAR SCR. EXT.
Q	.093	±.031	REAR SHAFT EXT.
R	.343	±.031	1st SEC. SPACING

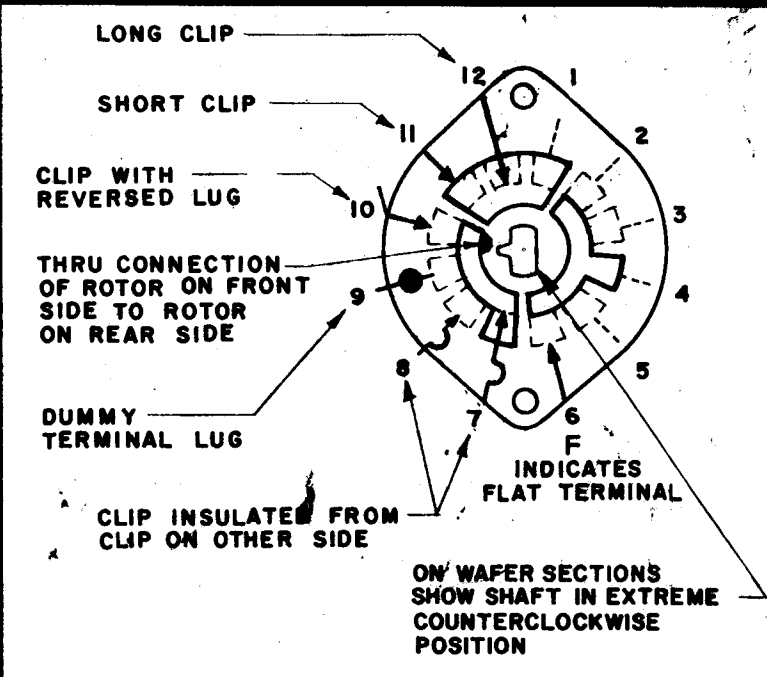
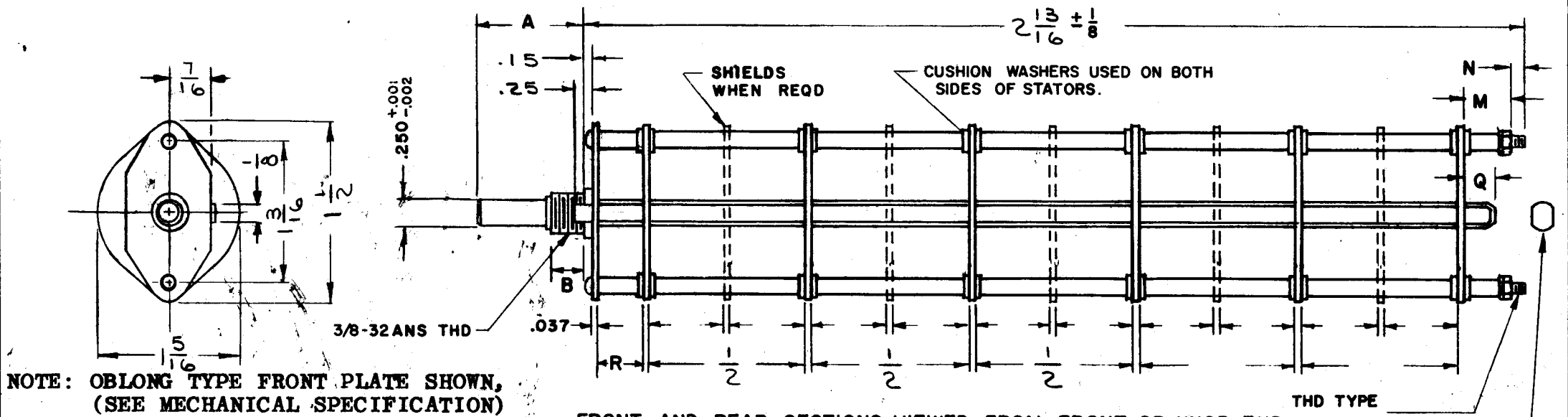
TMC PART NUMBER: SW-345 STAMP ON FRONT PLATE
 FRONT PLATE SHAPE: ROUND OR OBLONG X
 MECHANICAL SPECIFICATIONS:
 NUMBER OF SECTIONS- 4
 NUMBER OF POSITIONS- 6
 ANGLE OF THROW- 30°
 CONTACTS:
 SHORTING TYPE, SECTIONS _____
 NON SHORTING TYPE, SECTIONS 4
 SILVER PLATED BRASS, SECTIONS _____
 SILVER ALLOY, SECTIONS _____
 WAFERS:
 BAKELITE, SECTIONS _____
 CERAMIC, SECTIONS 4 (STEATITE)
 MYCALEX, SECTIONS _____
 IMPREGNATION (IF REQ.) _____
 FINISH REQUIREMENTS:
 ARMY NAVY COMMERCIAL _____
 SALT TEST (IF REQ.) _____
 HARDWARE, TO BE SUPPLIED BY MANUFACTURER:
 QUAN. -32 NUTS ACROSS FLATS
 MATERIAL PLATING _____
 QUAN. INTERNAL TOOTH LOCKWASHER
 MATERIAL PLATING _____
 ELECTRICAL SPECIFICATIONS:
 MAXIMUM RATED VOLTAGE _____
 MAXIMUM RATED CURRENT _____

NOTE:
 FOR S401-13 ("F" TYPE) SWITCHES, THE SHAFT POSITION MUST BE SPECIFIED ON DETAIL "XX" BELOW.

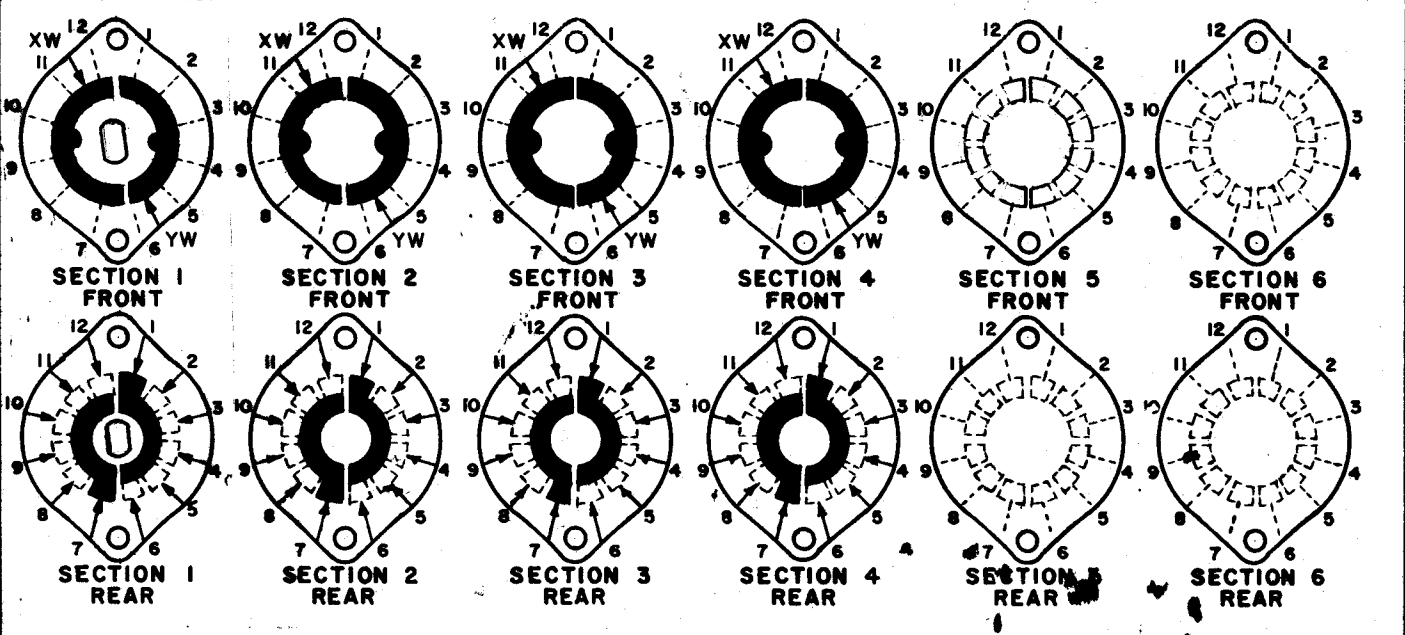


NOTES

REVISIONS					
SYM	DESCRIPTION	DATE	E.M.N. NO.	DRAFT	APPD
Ø	ORIGINAL RELEASE FOR PRODUCTION	10-29-64	Ø	9.2	



FRONT AND REAR SECTIONS VIEWED FROM FRONT OR KNOB END OF SWITCH IN EXTREME COUNTERCLOCKWISE POSITION. SEE NOTE (DET. "XX")



SYMBOLS USED IN MARKING PRINT

SWITCH, ROTARY - 12 POINT TYPE

MATERIAL		THE TECHNICAL MATERIEL CORP. MAMARONECK, NEW YORK			
FINISH		TITLE SWITCH, ROTARY			
UNLESS OTHERWISE SPECIFIED DIMENSIONS ARE IN INCHES AND INCLUDE CHEMICALLY APPLIED OR PLATED FINISHES		DRAWN J. LESHINSKI	DATE 12/12/63	FINAL APPROVAL RAC	DATE
DECIMALS .X ± .05 .XX ± .01 .XXX ± .005		CHECKED @	DATE 10-29-64	DATE 10/19/64	DATE
FRACTIONS ± 1/64 ANGLES ± 0° 30'		ELECT. DES. R/W	DATE 10-29-64	DATE	DATE
TOLERANCES		MECH. DES. R/W	DATE 10-29-64	DATE	DATE
THE CONTENTS OF THIS DRAWING ARE THE EXCLUSIVE PROPERTY OF THE TECHNICAL MATERIEL CORP. ITS UNAUTHORIZED USE OR REPRODUCTION IN WHOLE OR IN PART IS STRICTLY FORBIDDEN.		SW-345		Ø	REV. LTR.