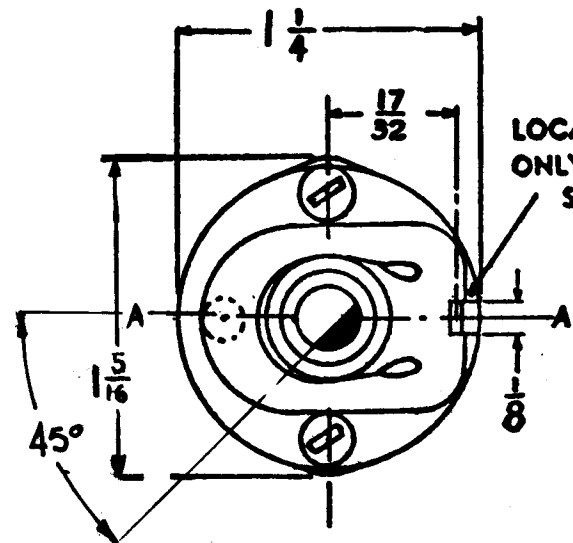
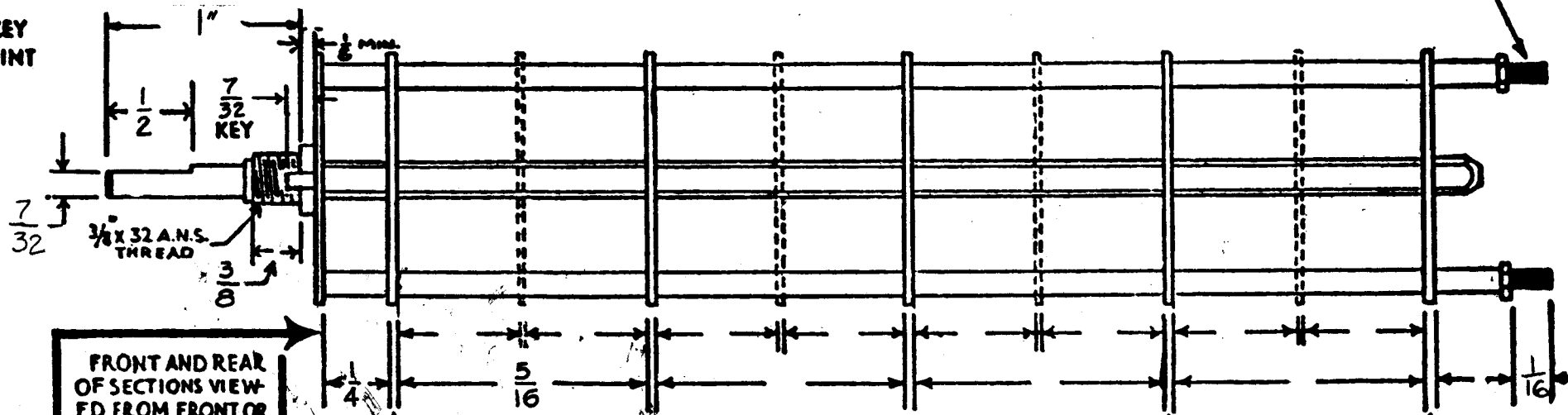


SW-344



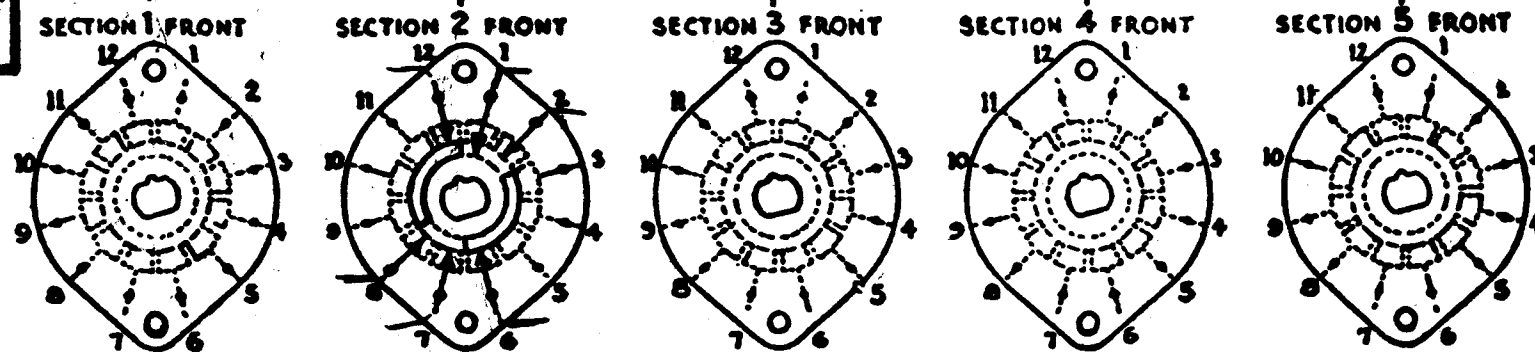
LOCATING KEY ONLY AT POINT SHOWN

SHOW CUT AWAY PORTION OF FLAT IN BLACK AND GIVE ANGLE TO LINE A-A. ± 3° STANDARD RMA KNURLED AND SLOTTED SHAFT ALSO AVAILABLE

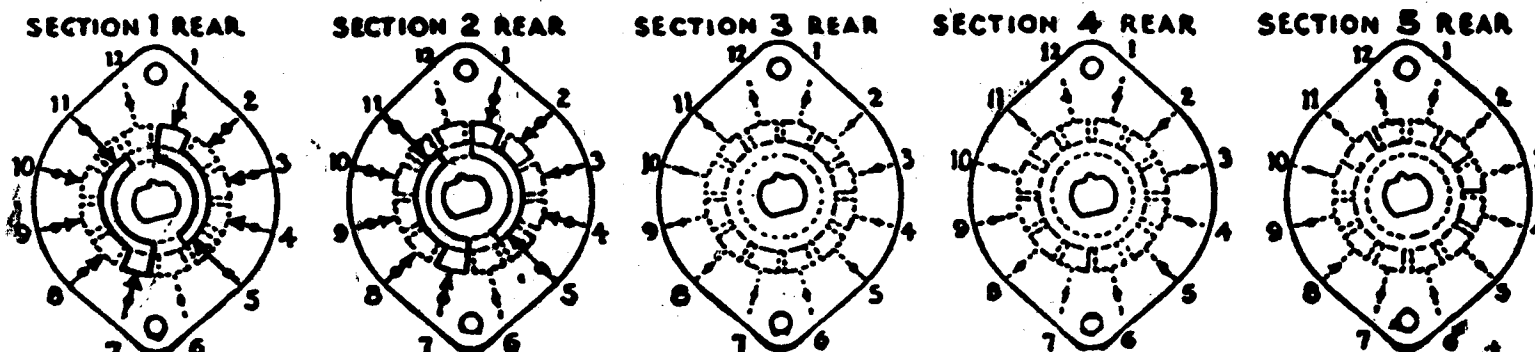
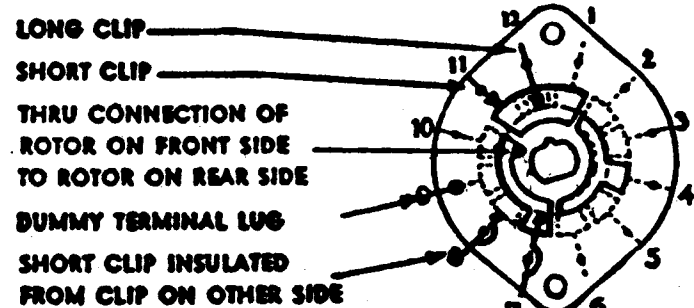


FRONT AND REAR OF SECTIONS VIEWED FROM FRONT OR KNOB END OF SWITCH IN EXTREME COUNTER-CLOCKWISE POSITION

NUMBER OF SECTIONS 2  
 NUMBER OF POSITIONS 4  
 ANGLE OF THROW 30° (30° OR 60°)



**SYMBOLS USED IN MARKING PRINT**



OUTLINE ROTOR BLADES AS SHOWN ABOVE WITH SWITCH IN EXTREME COUNTER-CLOCKWISE POSITION

CUSTOMER NOTES

**SPECIFICATIONS**

SHORTING TYPE CONTACTS  NON-SHORTING  IF NOT SPECIFIED SHORTING TYPE WILL BE SUPPLIED.  
 INSULATION: 1/16" BAKELITE  1/8" MY CALEX  SPECIFY IMPREGNATION IF REQUIRED.....  
 FINISH REQUIREMENTS: COMMERCIAL  ARMY  NAVY  SALT TEST (IF ANY GIVE DETAILS).....  
 CONTACTS AND ROTORS: SILVER PLATED BRASS  SOLID SILVER ALLOY  IF NOT SPECIFIED SILVER PLATED BRASS WILL BE SUPPLIED.  
 MOUNTING HARDWARE: SUPPLY..... 3/16" - 32 NUTS..... ACROSS FLATS; MATERIAL..... PLATING.....  
 ..... 3/16" INTERNAL TOOTH LOCKWASHER; MATERIAL..... PLATING.....  
 STAMP PART NUMBER: SW-344 (Number) ON FRONT PLATE, YES  NO

REQ. ITEM	PART NO.	DESCRIPTION	SYMBOL
		THE TECHNICAL MATERIEL CORP., MAMARONECK, NEW YORK	
STOCK SIZE		SWITCH, ROTARY	
MATERIAL			
TYPE & TEMPER	HEAT TREAT. SPEC.	DRAWN G.D.L.	CHECKER J.H.R.
FINISH & SPEC. NO.		FINAL APPROVAL B.P.	
		SW-344	

SYM	DESCRIPTION	DATE	CH. NO.	DRAFTS	CHECKER	ENG. APP.
UNLESS OTHERWISE SPECIFIED:						
DIMENSIONS ARE IN INCHES		SCALE: DO NOT SCALE				
TOLERANCES ON		MAXIMUM ALLOWABLE TOLERANCES HAVE BEEN DETERMINED AND ANY DEVIATIONS WILL BE CAUSE FOR REJECTION. REMOVE ALL BURRS AND SHARP EDGES				
FRACTIONS ± 1/64		DECIMALS ± .005		ANGLES ± 1/2°		
1	MSR-9					10-11-63
REQ. PER UNIT	MODEL	SECTION	ASS'Y. NO.	DATE		
USED ON						