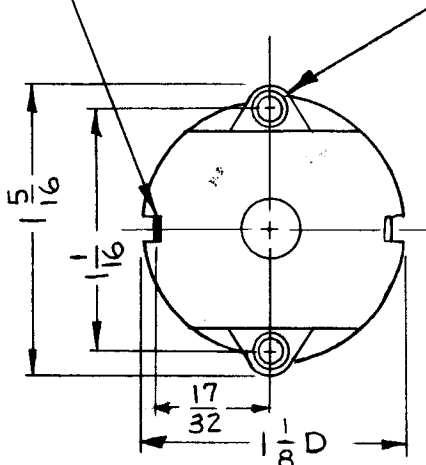
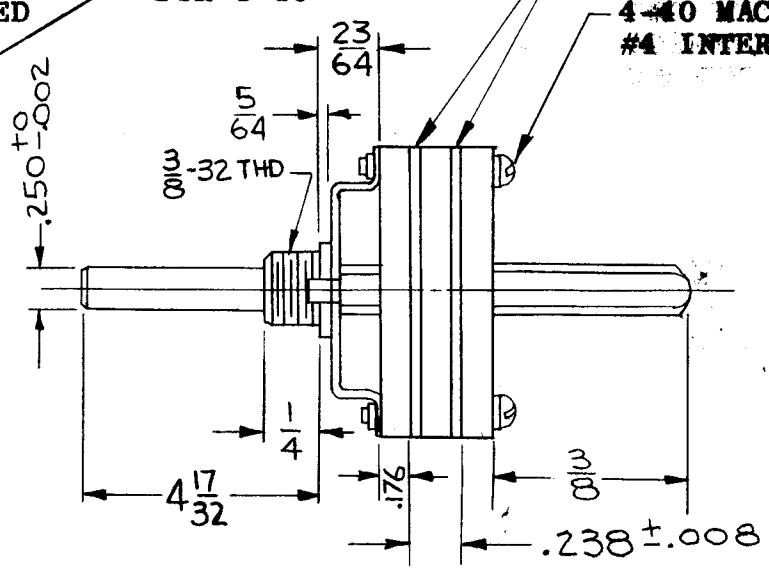


STANDARD POSITION,
OTHER OPTIONAL.
SHOW POSITION DESIRED
IN SOLID BLACK.



BUSHING TAPPED
FOR 4-40

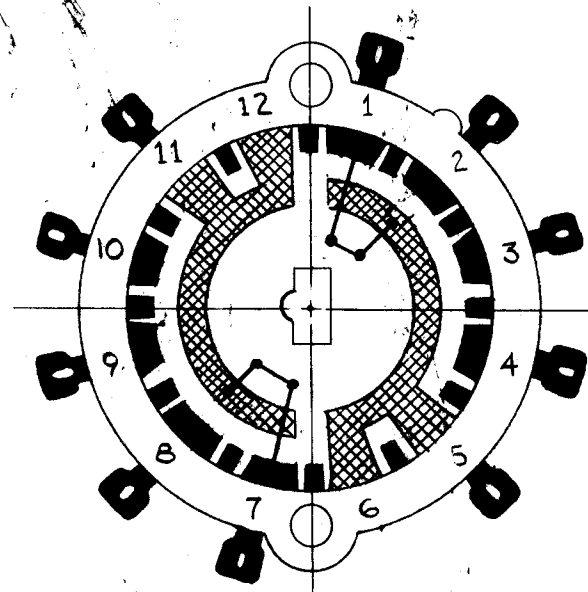


SHIELDS BETWEEN WAFERS

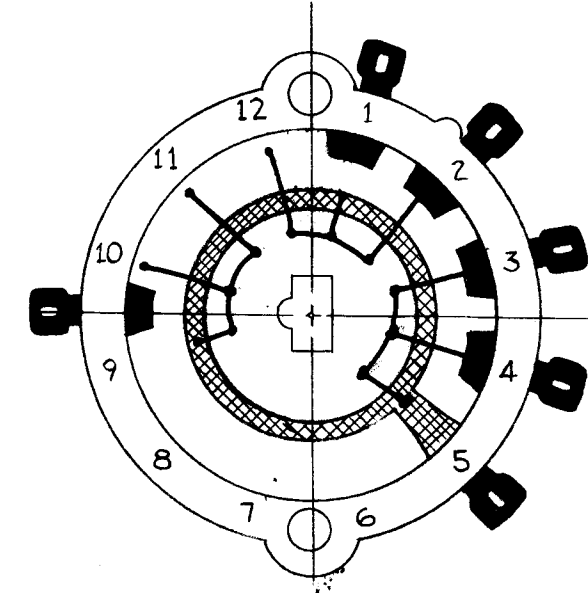
4-40 MACHINE SCREW WITH
#4 INTERNAL TOOTH LOCKWASHER

SW-339 A

REVISIONS					
SYM	DESCRIPTION	DATE	E.M.N. NO.	DRAFT	CHKD APPD
A	#7 TERMINAL ADD. TO SECTION 1	9/25/64	12460	RP	BP

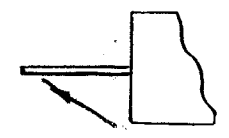


SECTION 1
MFG #212-204A



SECT. 2
(AS SHOWN)

NOTES:
SWITCH WAFERS SHOWN FROM MOUNTING END
SECTION 3 SAME AS SECTION 1
SECTION 2 (AS SHOWN)



TERMINALS FLAT
AS SHOWN

TMC PART NO: SW-339 (STAMP ON FRONT PLATE)
 TOTAL NO. OF POSITIONS: 4
 TOTAL NO. OF SECTIONS: 3
 ANGLE OF THROW: 30°
 CONTACTS & ROTORS: SHORTING _____, NON SHORTING
 MATERIAL & FINISHES
 METAL PARTS: STEEL, CADMIUM PLATE & IRIDITE
 SHAFT: STEEL, CADMIUM PLATE & IRIDITE
 BUSHING: STEEL, CADMIUM PLATE & IRIDITE
 STATOR CONTACTS & TERMINALS: BRASS, DENSELY SILVER PLATED
 ROTOR CONTACTS: SILVER-BRASS LAMINATED OVERLAY: SILVER PLATED
 ROTOR INSULATION MATERIAL: NYLON
 STATOR INSULATION MATERIAL: GLASS REINFORCED ALKYD, GRAY.
 FINISH REQUIREMENTS:
 COMMERCIAL: _____ MILITARY: _____
 SALT SPRAY: 50 HR. 20 HR. _____
 HARDWARE SUPPLIED:
 NUTS 3/8-32, 1/2 ACROSS FLATS, 3/32 THICK, BRASS, NICKEL PLATE
 3/8 INT. LOCKWASHER 11/16 OD X 1/32 THICK, BRONZE, NICKEL PLATED.
 SPECIAL INSTRUCTIONS: NO STOPS.

NOTES

1	TTR-10	AX-418
Q'TY./UNIT	MODEL USED ON	ASS'Y. NO.
SCALE NONE	CODE C	S401-175

THE CONTENTS OF THIS DRAWING ARE THE EXCLUSIVE PROPERTY OF THE TECHNICAL MATERIEL CORP. ITS UNAUTHORIZED USE OR REPRODUCTION IN WHOLE OR IN PART IS STRICTLY FORBIDDEN.

REQ'D.	ITEM	PART NUMBER	DESCRIPTION	SYMBOL
KOHN LIST OF MATERIAL E3037-42				
MATERIAL		THE TECHNICAL MATERIEL CORP. MAMARONECK, NEW YORK		
FINISH		TITLE SWITCH, ROTARY		
UNLESS OTHERWISE SPECIFIED DIMENSIONS ARE IN INCHES AND INCLUDE CHEMICALLY APPLIED OR PLATED FINISHES		DRAWN <i>Shelley</i>	DATE 9-12-63	FINAL APPROVAL <i>BP</i>
		CHECKED <i>Hole</i>	DATE 9/16/63	
		ELECT. DES. RON KOHN	DATE 9/18/63	SW-339
		MECH. DES. RON KOHN	DATE 9/18/63	A
DECIMALS .X ± .05 .XX ± .01 .XXX ± .005				FRACTIONS ± 1/64 ANGLES ± 0° 30'
TOLERANCES				SHEET
				REV. LTR.