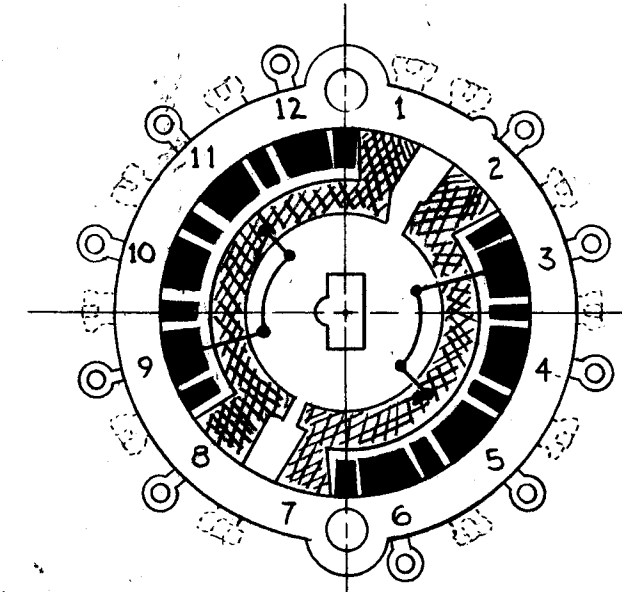


SW-337

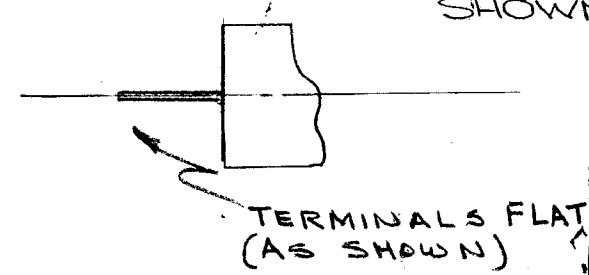
REVISIONS						
SYM	DESCRIPTION	DATE	E.M.N. NO.	DRAFT	CHKD	APPD

NOTE:  
SECTIONS 2, 3, 4 & 5 ARE THE SAME AS SECT. 1



SECTION 1  
SHOWN FROM REAR OF SWITCH

TMC PART NO: SW-337 (STAMP ON FRONT PLATE)  
 TOTAL NO. OF POSITIONS: 4  
 TOTAL NO. OF SECTIONS: 5  
 ANGLE OF THROW: 30°  
 CONTACTS & ROTORS: SHORTING , NON SHORTING   
 MATERIAL & FINISHES  
 METAL PARTS: STEEL, CADMIUM PLATE & IRIDITE  
 SHAFT: STEEL, CADMIUM PLATE & IRIDITE  
 BUSHING: STEEL, CADMIUM PLATE & IRIDITE  
 STATOR CONTACTS & TERMINALS: BRASS, DENSELY SILVER PLATED  
 ROTOR CONTACTS: SILVER-BRASS LAMINATED OVERLAY: SILVER PLATED  
 ROTOR INSULATION MATERIAL: NYLON  
 STATOR INSULATION MATERIAL: GLASS REINFORCED ALKYD, GRAY.  
 FINISH REQUIREMENTS:  
 COMMERCIAL: \_\_\_\_\_ MILITARY: \_\_\_\_\_  
 SALT SPRAY: 50 HR.  200 HR. \_\_\_\_\_  
 HARDWARE SUPPLIED:  
 NUTS 3/8-32, 1/2 ACROSS FLATS, 3/32 THICK, BRASS, NICKEL PLATE  
 3/8 INT. LOCKWASHER 11/16 OD X 1/32 THICK, BRONZE, NICKEL PLATED  
 SPECIAL INSTRUCTIONS: NO STOPS.



REQ'D.	ITEM	PART NUMBER	DESCRIPTION	SYMBOL
KOHN LIST OF MATERIAL E 3037-40				
MATERIAL			THE TECHNICAL MATERIEL CORP. MAMARONECK, NEW YORK	
FINISH			TITLE SWITCH, ROTARY	
UNLESS OTHERWISE SPECIFIED DIMENSIONS ARE IN INCHES AND INCLUDE CHEMICALLY APPLIED OR PLATED FINISHES			DRAWN <i>Shew's</i> DATE 9-11-63 CHECKED <i>JWA</i> DATE 9-11-63 ELECT. DES. <i>RON KOHN</i> DATE 9-18-63 MECH. DES. <i>RON KOHN</i> DATE 9-18-63	FINAL APPROVAL <i>BP</i> DATE SW-337 SHEET
DECIMALS .X ± .05 .XX ± .01 .XXX ± .005		FRACTIONS ± 1/64 ANGLES ± 0° 30'		REV. LTR.

1	TTR-10	A-2773
Q'TY./UNIT	MODEL USED ON	ASS'Y. NO.
SCALE NONE	CODE C	5401-175

THE CONTENTS OF THIS DRAWING ARE THE EXCLUSIVE PROPERTY OF THE TECHNICAL MATERIEL CORP. ITS UNAUTHORIZED USE OR REPRODUCTION IN WHOLE OR IN PART IS STRICTLY FORBIDDEN.

NOTES