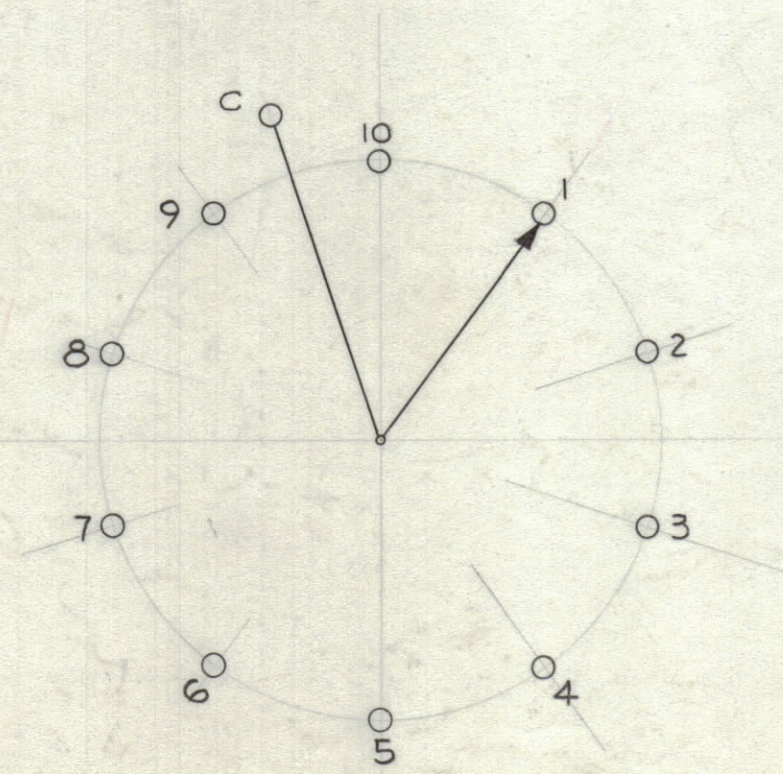
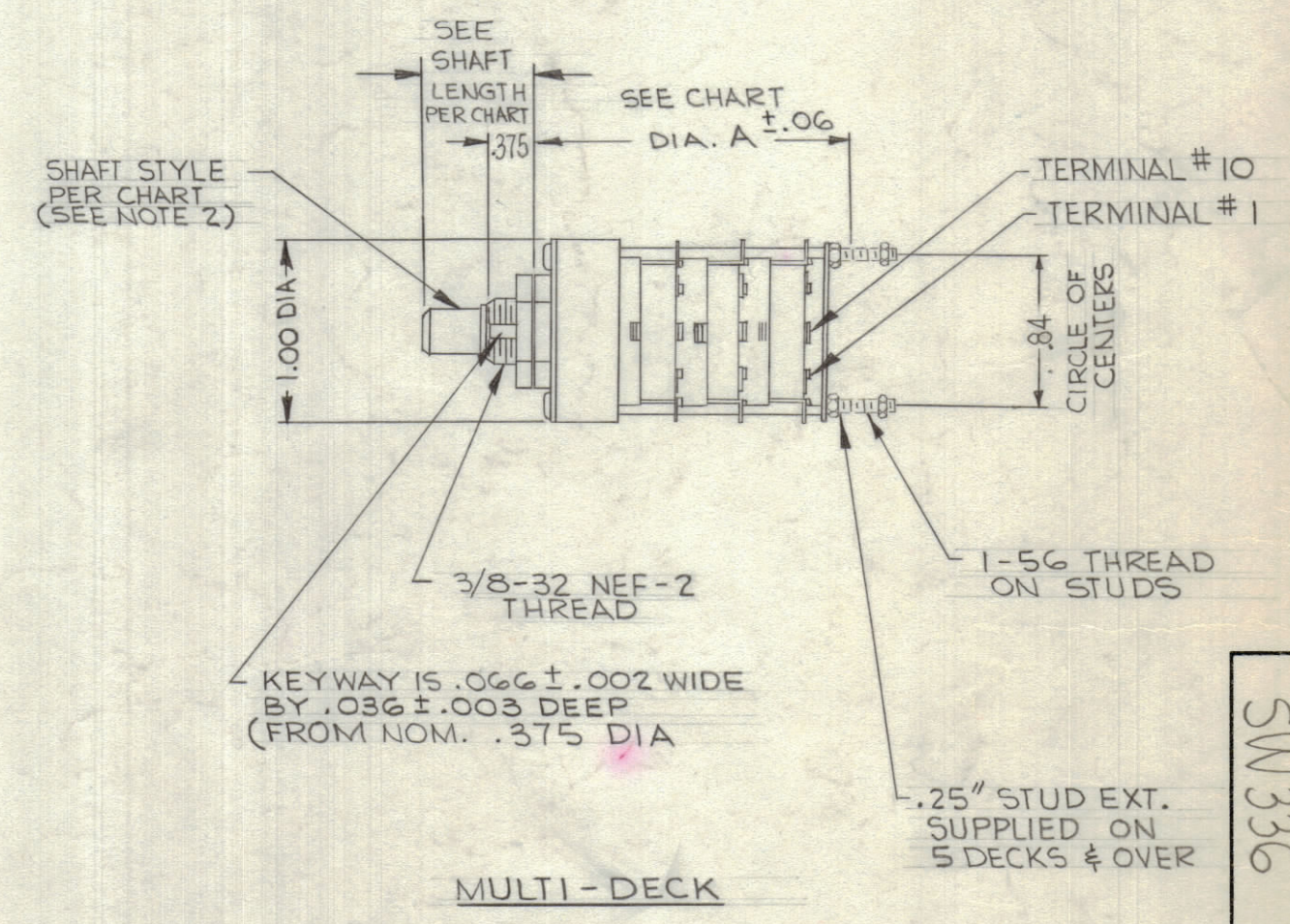
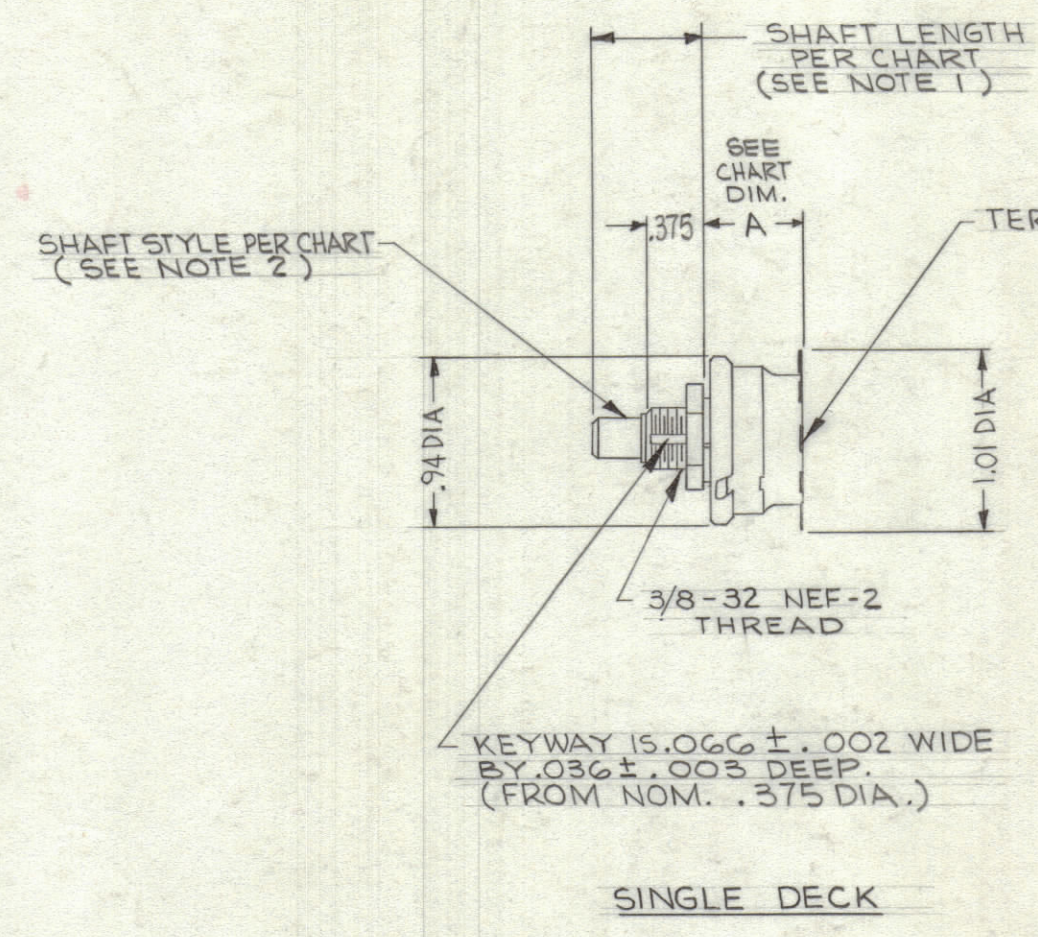


TMC PART NO.	MFRS. PART NO.	NUMBER OF DECKS	NO. OF CONTACT POSITIONS PER DECK	CONTACT TYPE	SEE NOTE 2 SHAFT STYLE (SEE) (PICT.)	SEE NOTE 1 SHAFT LENGTH (SEE) (PICT.)	DIM. A
SW-336-1	24YY2260-2	1	2	NON SHORT	FLATTED	11/16	19/32
SW-336-2	24YY2452-2	2	2	NON SHORT	FLATTED	11/16	1-25/64
SW-336-3	24YY2452-3	2	3	NON SHORT	FLATTED	11/16	1-25/64
SW-336-4	24YY2453-3	3	3	NON SHORT	FLATTED	11/16	1-49/64

REVISIONS						
ZONE	SYM	DESCRIPTION	DATE	E.M.N. NO.	DRAFT	CHKD
~	A	.375 WAS .25 (2 PLACES, SHAFT LENGTH WAS 9/16 ON P/N/E NOTES SW 336-1 MFG NO WAS 24001-2, -2 WAS 24002-2, -3 WAS 24002-3, -4 WAS 24003-3)	7-31-64	12012	SRS	[Signature]

NOTES:
 1. STANDARD SHAFT LENGTH IS 11/16".
 2. STANDARD SHAFT STYLE IS FLATTED.
 3. SWITCHES SHALL BE SUPPLIED WITH ONE HEX. MTG. NUT.

- SPECIFICATIONS:
- FIXED, BUILT-IN STOP AT TWO EXTREME POSITIONS.
 - POSITIONING INCREMENT ANGLE: 36°
 - CONTACT ARRANGEMENT: NONPILE-UP (SEE CIRCUIT DIAGRAM).
 - ELECTRICAL RATINGS:
 - CURRENT TYPE: AC
 - MAX. RATED VOLT: 115V
 - MAX. CURRENT: SWITCHING CAPACITY: 1 AMP, RESISTIVE
 - WILL CARRY 10 AMPS CONT.
 - MATERIALS & FINISHES
 - ROTOR: PHOSPHOR BRONZE, SILVER PLATED
 - STATOR: BRASS, SILVER PLATED
 - WAFER INSULATION: MOLDED MELAMINE THERMOSETTING PLASTIC, TYPE CMG, PER MIL-M-14.
 - COVER, DECK SEPARATORS (MULTI-DECK): MOLDED PHENOLIC, TYPE CFG, PER MIL-M-14.
 - COVER (SINGLE DECK): BRASS, CADMIUM PLATED
 - REAR SUPPORT PLATE: STAINLESS STEEL
 - MULTI-DECK THRU-BOLTS: STAINLESS STEEL
 - SHAFTS: STAINLESS STEEL
 - MTG. NUT: BRASS, CADMIUM PLATED
 - TERMINALS: BRASS, LEAD-TIN PLATED, .062 DIA. HOLE.
 - TERMINAL TYPE: SOLDER LUG



SHAFT STYLES	
FLATTED (STANDARD)	

STANDARD		
Q'TY./UNIT	MODEL USED ON	ASS'Y. NO.
SCALE NONE	CODE	6-401-239

THE CONTENTS OF THIS DRAWING ARE THE EXCLUSIVE PROPERTY OF THE TECHNICAL MATERIEL CORP. ITS UNAUTHORIZED USE OR REPRODUCTION IN WHOLE OR IN PART IS STRICTLY FORBIDDEN.

REQ'D.	ITEM	PART NUMBER	DESCRIPTION	SYMBOL
KOHN LIST OF MATERIAL E3037				
MATERIAL		SEE NOTE 5	THE TECHNICAL MATERIEL CORP. MAMARONECK, NEW YORK	
FINISH		SEE NOTE 5	TITLE SWITCH, ROTARY, TAP	
UNLESS OTHERWISE SPECIFIED DIMENSIONS ARE IN INCHES AND INCLUDE CHEMICALLY APPLIED OR PLATED FINISHES		DRAWN [Signature]	DATE 8-30-63	FINAL APPROVAL [Signature]
DECIMALS .X ± .05 .XX ± .01 .XXX ± .005		CHECKED [Signature]	DATE 8-3-63	
FRACTIONS ± 1/64 ANGLES ± 0° 30'		ELECT. DES. [Signature]	DATE 9-11-63	
TOLERANCES		MECH. DES. [Signature]	DATE 9-11-63	
			SHEET	REV. LTR.

SW 336
A