

SW 332 A

THE CONTENTS OF THIS DRAWING ARE THE EXCLUSIVE PROPERTY OF THE TECHNICAL MATERIEL CORP. ITS UNAUTHORIZED USE OR REPRODUCTION IN WHOLE OR IN PART IS STRICTLY FORBIDDEN.

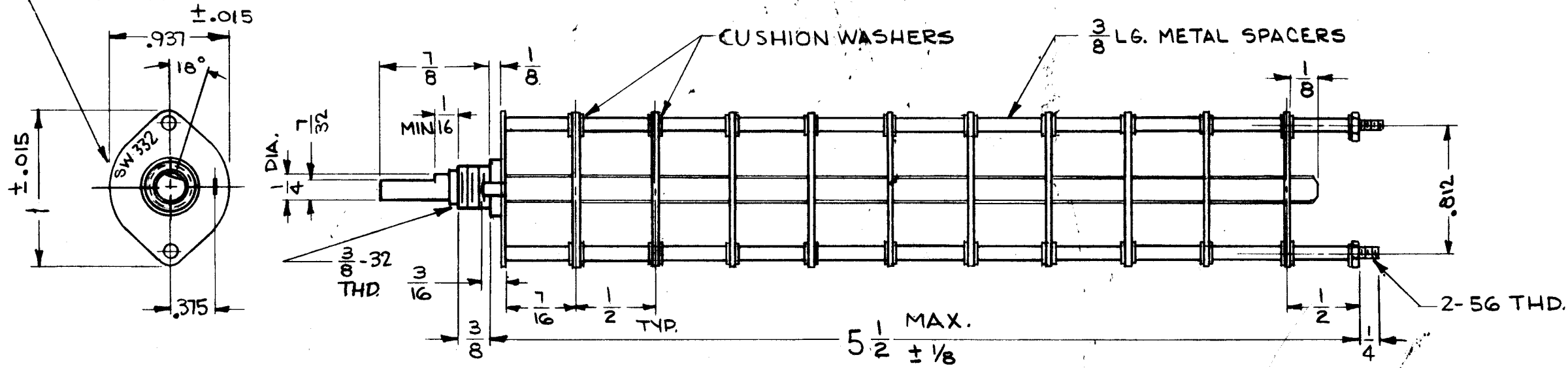
SPECIFICATIONS

TMC PART NUMBER: SW-332 STAMP ON FRONT PLATE  
 FRONT PLATE SHAPE: ROUND  
 MECHANICAL SPECIFICATIONS:  
 NUMBER OF SECTIONS-10  
 NUMBER OF POSITIONS-10  
 ANGLE OF THROW-36°  
 CONTACTS:  
 NON SHORTING TYPE, SECTIONS-10  
 SILVER ALLOY, SECTIONS-10  
 WAFERS:  
 STATOR-SILICON GLASS-10 SECTIONS  
 ROTOR-KEL-F 10 SECTIONS  
 FINISH REQUIREMENTS:  
 SALT TEST-200 HOURS

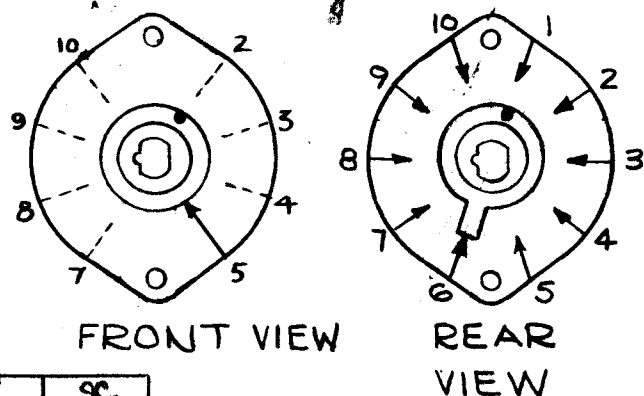
CONT.

HARDWARE, TO BE SUPPLIED BY MANUFACTURER:  
1 QUAN. 3/8-32 NUT, 1/2 ACROSS FLATS  
 MATERIAL-BRASS PLATING-NICKEL  
1 QUAN. 3/8 INTERNAL TOOTH LOCKWASHER  
 MATERIAL-PHOS. BRONZE PLATING-NICKEL  
 ELECTRICAL SPECIFICATIONS:  
 MAXIMUM RATED VOLTAGE - 50 V  
 MAXIMUM RATED CURRENT - 1/2 AMP.

STAMP TMC PART NO AS SHOWN, WITH LATEST REVISION LETTER



NOTE:  
 FRONT AND REAR SECTIONS VIEWED FROM FRONT OR KNOB END OF SWITCH.



A	SPECS UPDATED	10-6-64	12550	WB	@	9
O	ORIGINAL RELEASE FOR PRODUCTION	5-11-64	0	A.M.	@	
XI	DIM. 5 1/2 ± 1/8 WAS 5 1/2 SPECS UPDATED	7/28/64	XI	98	RW	W

SYM	DESCRIPTION	DATE	CH. NO.	DRAFTS	CHECKER	ENG. APP.
UNLESS OTHERWISE SPECIFIED:						
DIMENSIONS ARE IN INCHES		SCALE: S401-13 (TYPE-A)				
TOLERANCES ON FRACTIONS ± 1/64		MAXIMUM ALLOWABLE TOLERANCES HAVE BEEN DETERMINED AND ANY DEVIATIONS WILL BE CAUSE FOR REJECTION.				
DECIMALS ± .005		REMOVE ALL BURRS AND SHARP EDGES				
ANGLES ± 1/2°						

REQ. PER UNIT	MODEL	SECTION	ASSY. NO.	DATE
1	VLR-1			6-27-63

REQ. ITEM	PART NO.	M. GELLMAN	DESCRIPTION	SYMBOL
			THE TECHNICAL MATERIEL CORP., MAMARONECK, NEW YORK	
			SWITCH, ROTARY	
			MATERIAL	
		G. Lencov	@	RJC
			DRAWN	CHECKED
			FINAL APPROVAL	
			FINISH & SPEC. NO.	SW 332 A
			ELE. DES. APP.	MECH. DES. APP.