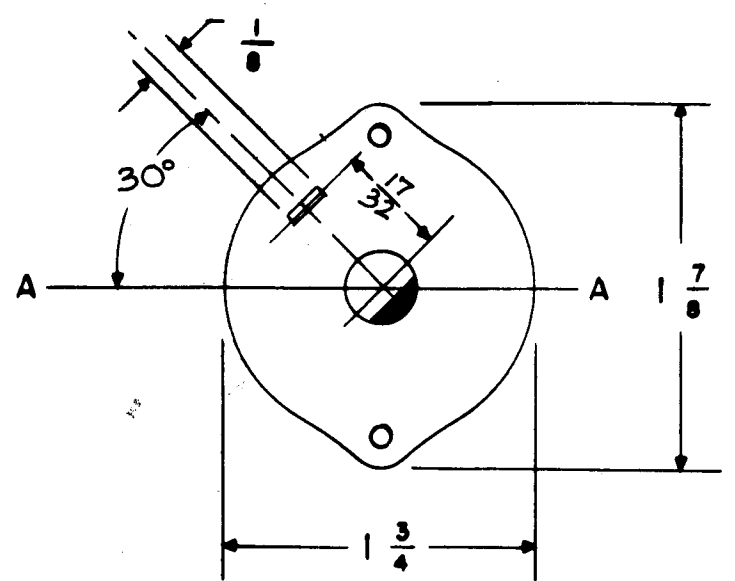
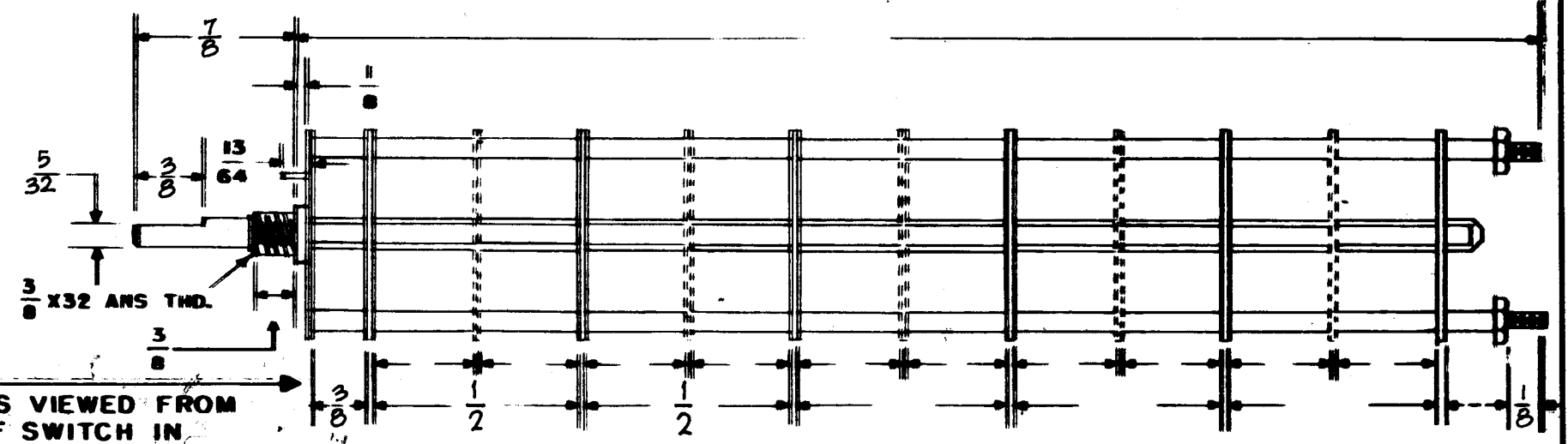


SW 329 B



FRONT & REAR SECTIONS VIEWED FROM FRONT OR KNOB END OF SWITCH IN EXTREME COUNTER CLOCKWISE POSITION



DRAW IN FLAT ON ABOVE SHAFT IN EXTREME COUNTER CLOCKWISE POSITION AND SHOW ANGLE IN REFERENCE TO LINE A-A

NUMBER OF SECTIONS	3	NO WIPER REQ'D.
NUMBER OF POSITIONS	3	NUMBER OF CONTACTS 5
ANGLE OF THROW	60°	30° APART

PART NUMBER SW-329-0
 STAMP ON FRONT PLATE YES NO

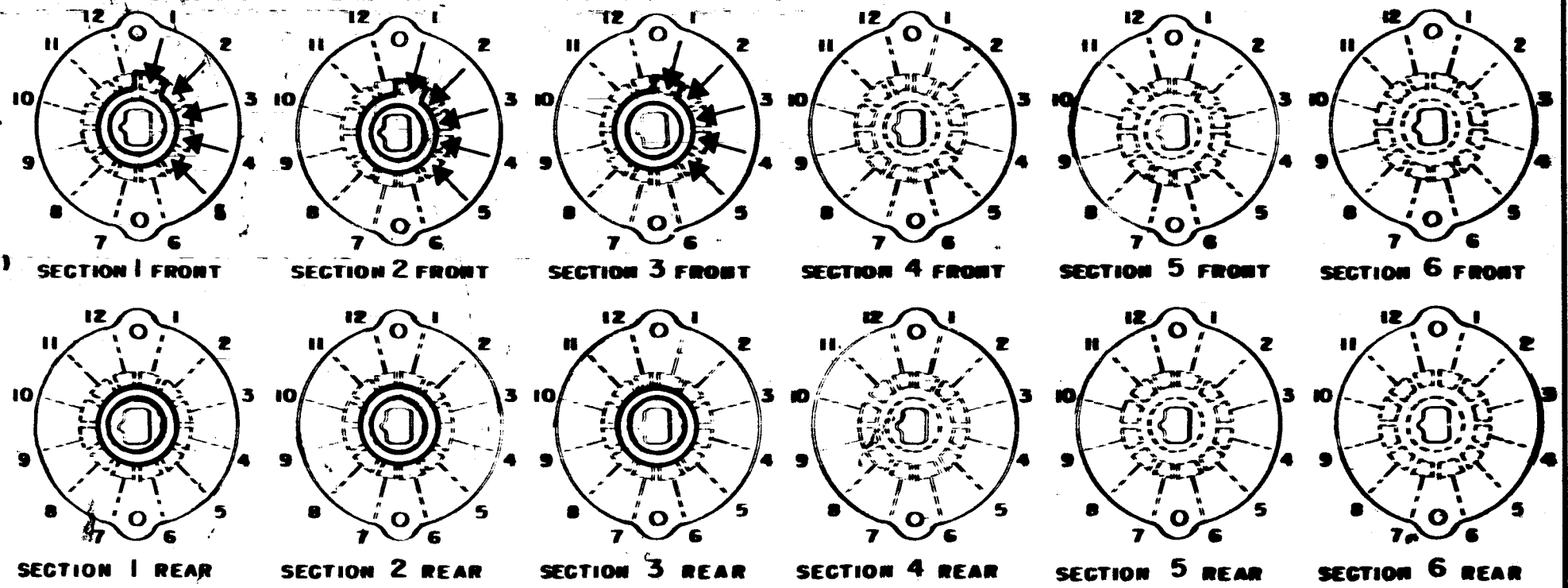
CONTACTS & ROTORS: (IF NOT SPECIFIED, SHORTING TYPE WILL BE SUPPLIED)
 SHORTING POSITIVE SHORTING

MATERIAL: (IF NOT SPECIFIED, SILVER PLATED BRASS WILL BE SUPPLIED)
 SILVER PLATED BRASS SILVER ALLOY

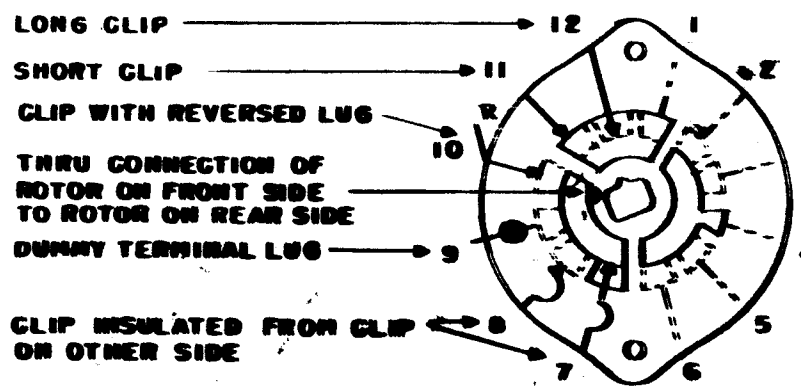
INSULATION: BAKELITE CERAMIC
 SPECIFY IMPREGNATION IF REQUIRED _____

FINISH REQUIREMENTS: COMMERCIAL ARMY NAVY
 SALT TEST (IF ANY GIVE DETAILS) _____

HARDWARE: SUPPLY
 3/8-32 NUTS ACROS FLATS MAT. BRASS PLATING NICKEL
 3/8 INT TOOTH LOCKWASHERS MAT. BRASS PLATING NICKEL



SYMBOLS USED IN MARKING PRINT →



TYPE - H **(HC)** DH DHC QH
 QDH QHC QDHC
 (CIRCLE DESIRED TYPE)

SYM	DESCRIPTION	DATE	CH. NO.	DRAFTS	CHECKER	ENG. APP.
B	NO. OF POS WERE 5; ADD. "NO WIPER REQ'D"	3-7-66	15922	HLA	JCB	se
A	NO. OF POSITIONS WERE 3	2-2-66	15699	HLA	JCB	se
O	ORIGINAL RELEASE FOR PRODUCTION	3-2-64		AM.		

UNLESS OTHERWISE SPECIFIED:
 DIMENSIONS ARE IN INCHES
 TOLERANCES ON FRACTIONS ± 1/64 DECIMALS ± .005 ANGLES ± 1/2°
 SCALE: MAXIMUM ALLOWABLE TOLERANCES HAVE BEEN DETERMINED AND ANY DEVIATIONS WILL BE CAUSE FOR REJECTION. REMOVE ALL BURRS AND SHARP EDGES

REQ. PER UNIT	MODEL	SECTION	ASS'Y. NO.	DATE
1	GPT-200K	AX-396		8-20-63
				USED ON

REQ. ITEM	PART NO.	DESCRIPTION	SYMBOL
		THE TECHNICAL MATERIEL CORP. MAMARONECK, NEW YORK	
		SWITCH, ROTARY	
		MATERIAL	
		John C Biele JCB RDC	
		TYPE & TEMPER HEAT TREAT. SPEC. DRAWN CHECKER FINAL APPROVAL	
		D.B.B. S.D. SW-329 B	
		FINISH & SPEC. NO. ELEC. DES. APP. MECH. DES. APP.	