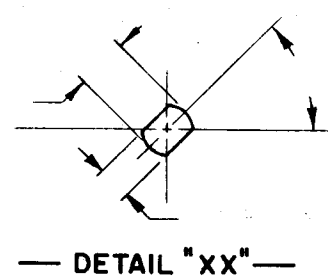
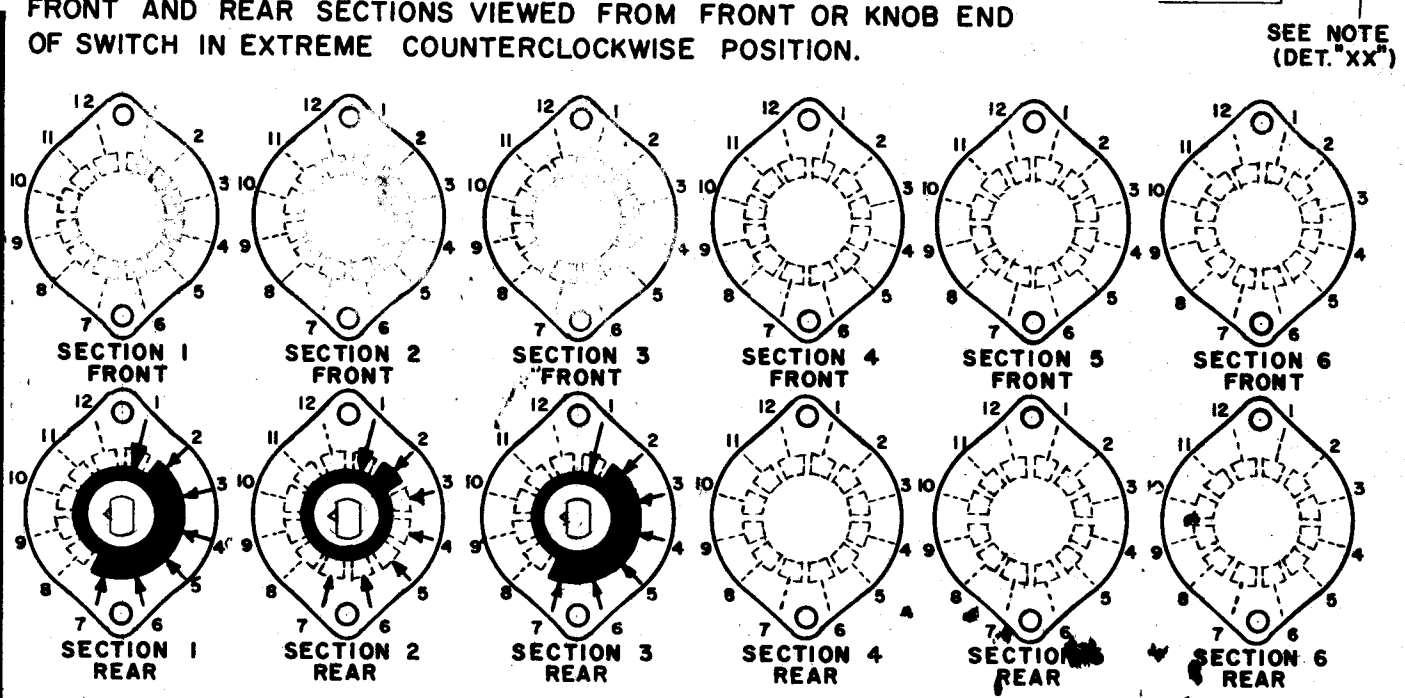
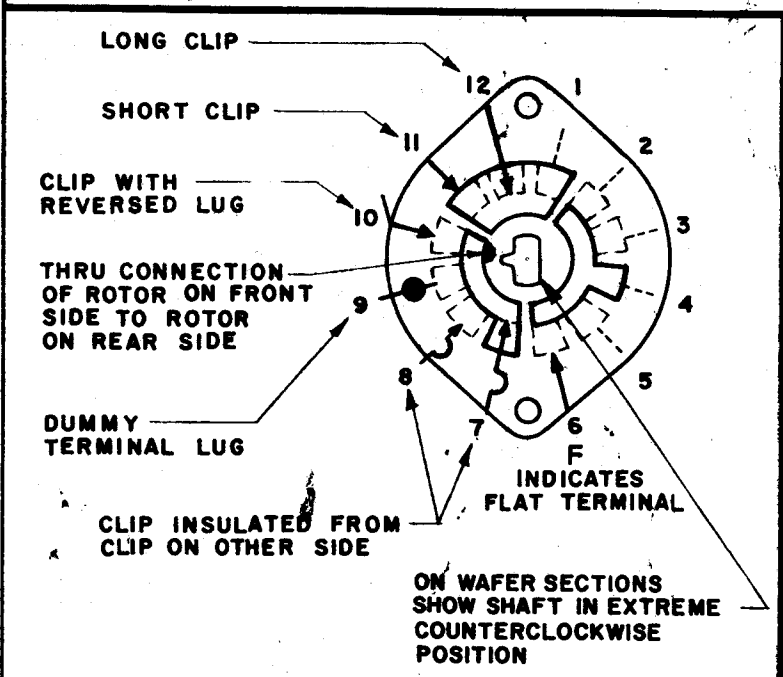
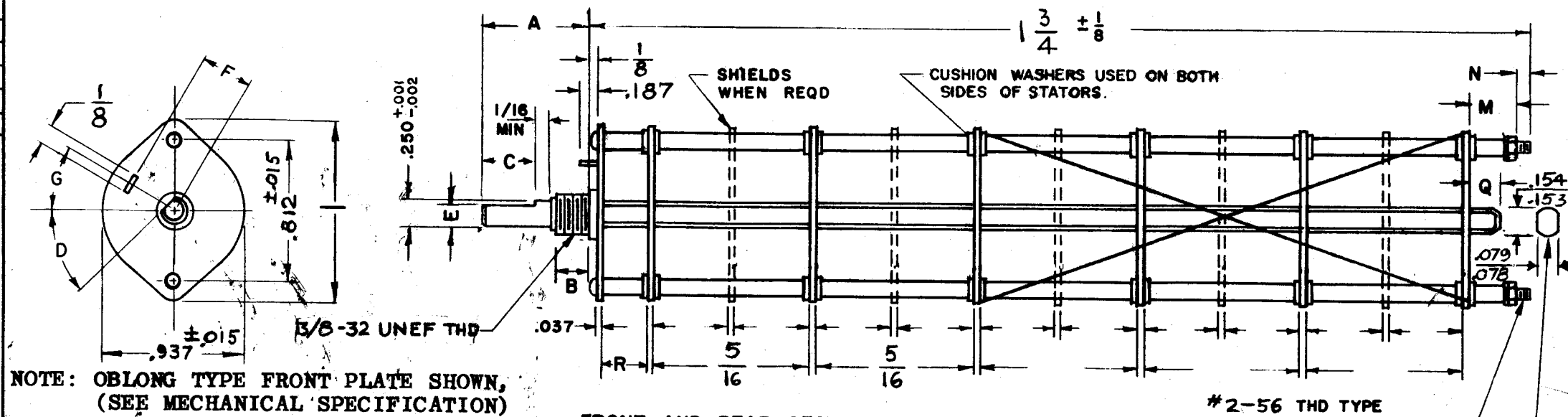


| DESG. | DIMENSION | TOL. | REMARK |
|-------|-----------|-------|-----------------------------|
| A | 3/4 | ±.015 | SHAFT LG. FROM MTG. SURFACE |
| B | 3/8 | ±.005 | BUSH. LG. |
| C | ROUND | ±.015 | FLAT LG. (IF REQ.) |
| D | | ±2° | FLAT ANGLE (IF REQ.) |
| E | | ±.002 | FLAT (IF REQUIRED) |
| F | 3/8 | ±.010 | KEY LOCATION (IF REQ.) |
| G | 180° | | KEY LOCATION (IF REQ.) |
| M | 1/4 | ±.010 | |
| N | 1/4 | ±.093 | REAR SCR. EXT. |
| Q | 1/4 MAX | ±.031 | REAR SHAFT EXT. |
| R | 5/16 | | 1st SEC. SPACING METAL |

TMC PART NUMBER: SW-327 STAMP ON FRONT PLATE
FRONT PLATE SHAPE: ROUND OR OBLONG ✓
MECHANICAL SPECIFICATIONS:
NUMBER OF SECTIONS- 3
NUMBER OF POSITIONS- 6
ANGLE OF THROW- 30°
CONTACTS:
SHORTING TYPE, SECTIONS 2
NON SHORTING TYPE, SECTIONS 1 & 3
SILVER PLATED BRASS, SECTIONS 1, 2, 3
SILVER ALLOY, SECTIONS
WAFERS: SILICON GLASS - 3 SECTIONS
ROTOR KEL-F 3 SECTIONS
CERAMIC, SECTIONS
MYCALEX, SECTIONS
IMPREGNATION (IF REQ.)
FINISH REQUIREMENTS:
ARMY NAVY COMMERCIAL ✓
SALT TEST (IF REQ.)
HARDWARE, TO BE SUPPLIED BY MANUFACTURER:
1 QUAN. 3/8-32 NUTS ACROSS FLATS
MATERIAL STEEL PLATING CADMIUM
1 QUAN. 3/8 INTERNAL TOOTH LOCKWASHER
MATERIAL STEEL PLATING CADMIUM
ELECTRICAL SPECIFICATIONS:
MAXIMUM RATED VOLTAGE
MAXIMUM RATED CURRENT
CONSTRUCTION: BOLTED
NOTE:
FOR S401-13 ("F" TYPE) SWITCHES, THE SHAFT POSITION MUST BE SPECIFIED ON DETAIL "XX" BELOW.



NOTES



SYMBOLS USED IN MARKING PRINT

STANDARD DRAWING

| | | |
|------------|---------------|-----------|
| 8 | MAF-1 | |
| Q'TY./UNIT | MODEL USED ON | ASSY. NO. |
| SCALE NONE | CODE C | S401-13 |

THE CONTENTS OF THIS DRAWING ARE THE EXCLUSIVE PROPERTY OF THE TECHNICAL MATERIEL CORP. ITS UNAUTHORIZED USE OR REPRODUCTION IN WHOLE OR IN PART IS STRICTLY FORBIDDEN.

| | | | |
|---|--|--|-----------------|
| MATERIAL | | THE TECHNICAL MATERIEL CORP. MAMARONECK, NEW YORK | |
| FINISH | | TITLE SWITCH, ROTARY | |
| UNLESS OTHERWISE SPECIFIED DIMENSIONS ARE IN INCHES AND INCLUDE CHEMICALLY APPLIED OR PLATED FINISHES | | DRAWN <i>W. Petro</i> | DATE 1-6-64 |
| DECIMALS .X ± .05 .XX ± .01 .XXX ± .005 | | CHECKED <i>a</i> | DATE 4-23-64 |
| FRACTIONS ± 1/64 ANGLES ± 0° 30' | | ELECT. DES. <i>TKG</i> | DATE 4/23/64 |
| TOLERANCES | | MECH. DES. <i>J. B.</i> | DATE 4-23-64 |
| | | FINAL APPROVAL <i>Rose</i> | |
| | | DATE 4/23/64 | |
| | | SW-327 | |
| | | 0 | |
| | | SHEET | |
| | | REV. LTR. | |