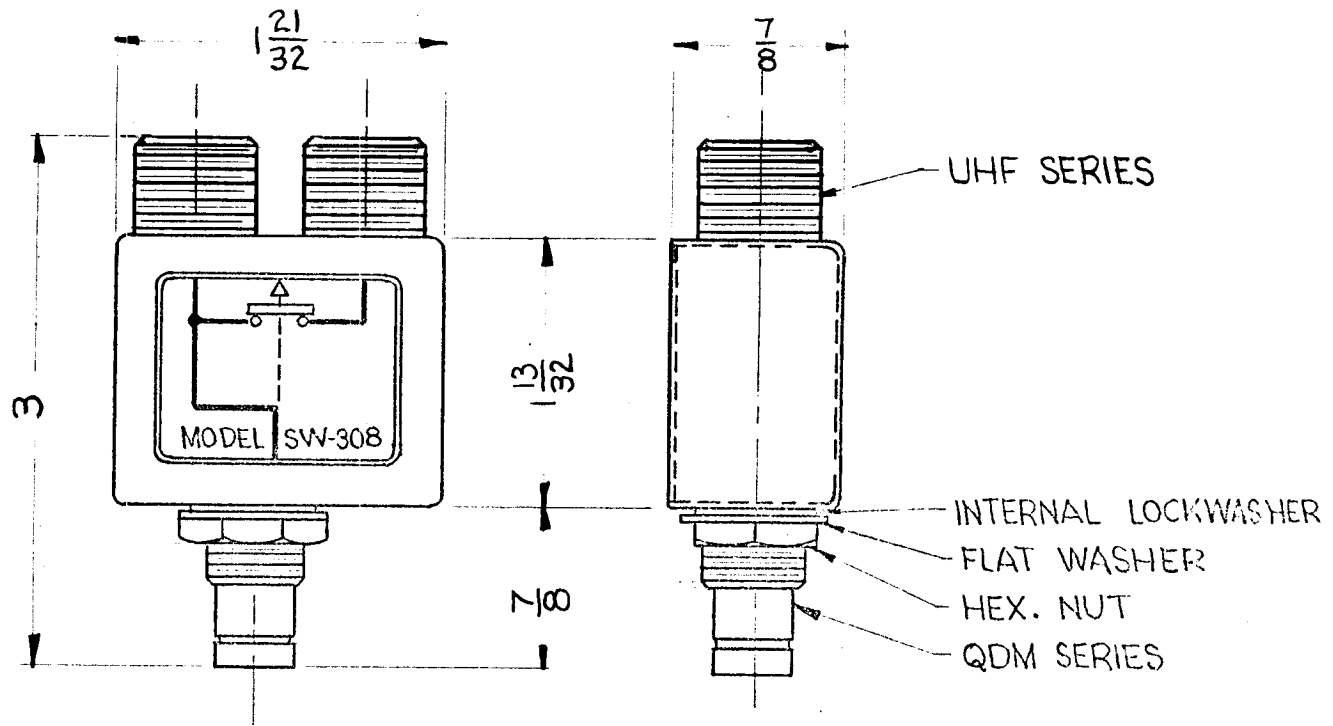


THE CONTENTS OF THIS DRAWING ARE THE EXCLUSIVE PROPERTY OF THE TECHNICAL MATERIEL CORP. ITS UNAUTHORIZED USE OR REPRODUCTION IN WHOLE OR IN PART IS STRICTLY FORBIDDEN.

REQ. PER UNIT	USED ON			SW-308	A
	MODEL	ASS'Y. NO.	DATE		
	SW-308				



NOTES:
CASE - MATERIAL - BRASS
FINISH: S115 TMC SMOOTH
GREY ENAMEL
CONNECTORS FINISH-
BODIES - RHODIUM FLASH
CONTACTS - GOLD FLASH

NOTE: ASSIGNED PATENT NO. 2,767,267

							REQ. ITEM	PART NO.	DESCRIPTION	SYMBOL
							STOCK SIZE		THE TECHNICAL MATERIEL CORP. MAMARONECK, NEW YORK	
							SEE NOTES		SWITCH JACK ASSEMBLY DUAL UHF TO SINGLE QDM	
							MATERIAL			
UNLESS OTHERWISE SPECIFIED:							2A-2459		R. Turchin 6-5-62	
DIMENSIONS ARE IN INCHES							TYPE & TEMPER		DRAWN	
TOLERANCES ON							HEAT TREAT. SPEC.		CHECKED	
FRAC. ± 1/64 DEC. ± .005 ANGLES ± 1/2°							SEE NOTES		FINAL APPROVAL	
MAXIMUM ALLOWABLE TOLERANCES HAVE BEEN DETERMINED AND ANY DEVIATIONS WILL BE CAUSE FOR REJECTION. REMOVE ALL BURRS AND SHARP EDGES							FINISH & SPEC. NO.		ELEC. DES. APP. MECH. DES. APP.	
									SW-308	
									A	