

THE CONTENTS OF THIS DRAWING ARE THE EXCLUSIVE PROPERTY OF THE TECHNICAL MATERIEL CORP. ITS UNAUTHORIZED USE OR REPRODUCTION IN WHOLE OR IN PART IS STRICTLY FORBIDDEN.

REQ. PER UNIT

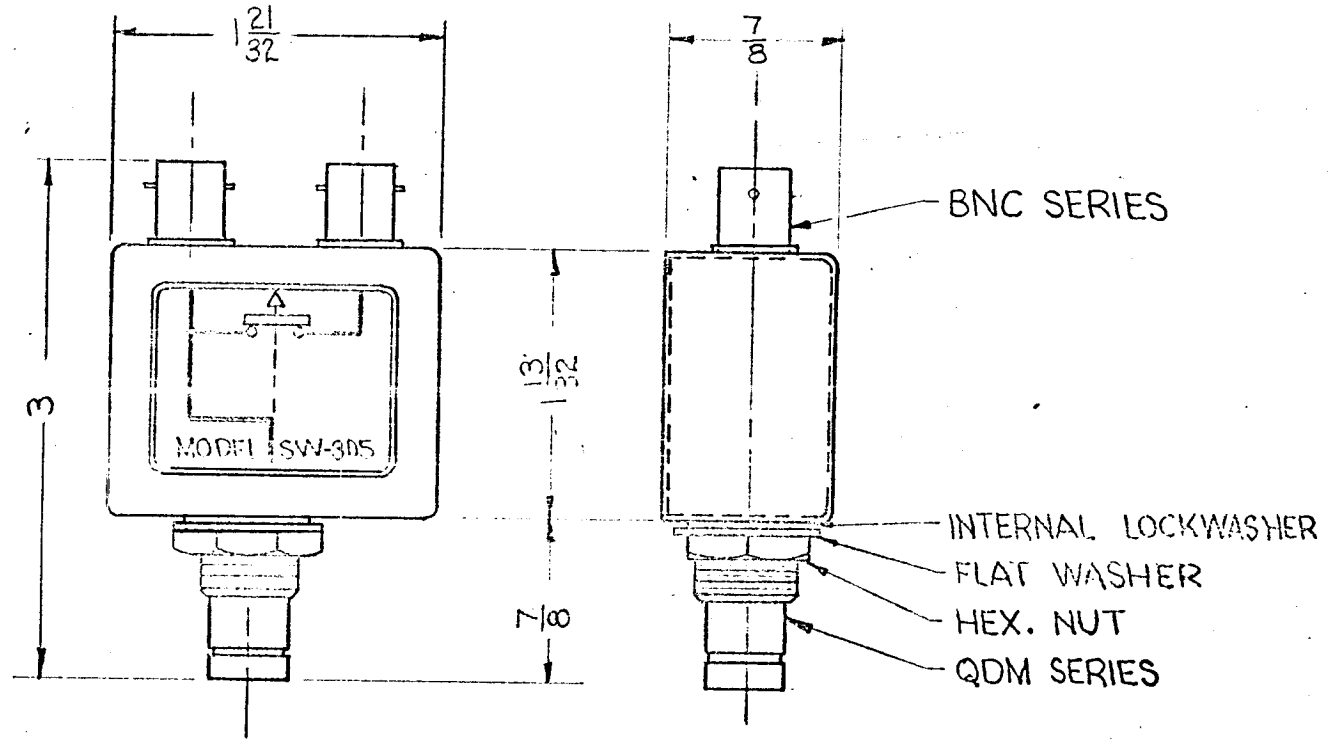
MODEL
SW-305

USED ON

ASS'Y. NO.

DATE

SW-305 A



NOTES:

CASE - MATERIAL - BRASS
FINISH - S115 TMC SMOOTH
GREY ENAMEL
CONNECTORS FINISH -
BODIES - RHODIUM FLASH
CONTACTS - GOLD FLASH

NOTE: ASSIGNED PATENT NO. 2,767,267

REQ.	ITEM	PART NO.	DESCRIPTION				SYMBOL
			THE TECHNICAL MATERIEL CORP. MAMARONECK, NEW YORK				
			STOCK SIZE				
A	PATENT NOTE ADDED	1/50/62	14245	F.V.	QDB	RMM	SEE NOTES
SYM	DESCRIPTION	DATE	CHK. NO.	DRAFTS	CHECKER	ENG. APP.	MATERIAL
UNLESS OTHERWISE SPECIFIED: DIMENSIONS ARE IN INCHES		2A-2456					
TOLERANCES ON		MAXIMUM ALLOWABLE TOLERANCES HAVE BEEN DETERMINED AND ANY DEVIATIONS WILL BE CAUSE FOR REJECTION. REMOVE ALL BURRS AND SHARP EDGES					
FRAC. $\pm 1/64$ DEC. $\pm .005$ ANGLES $\pm 1/2^\circ$							
							TYPE & TEMPER
							HEAT TREAT. SPEC.
							DRAWN
							CHECKED
							FINAL APPROVAL
							SEE NOTES
							FINISH & SPEC. NO.
							ELEC. DES. APP.
							MECH. DES. APP.
							SW-305 A