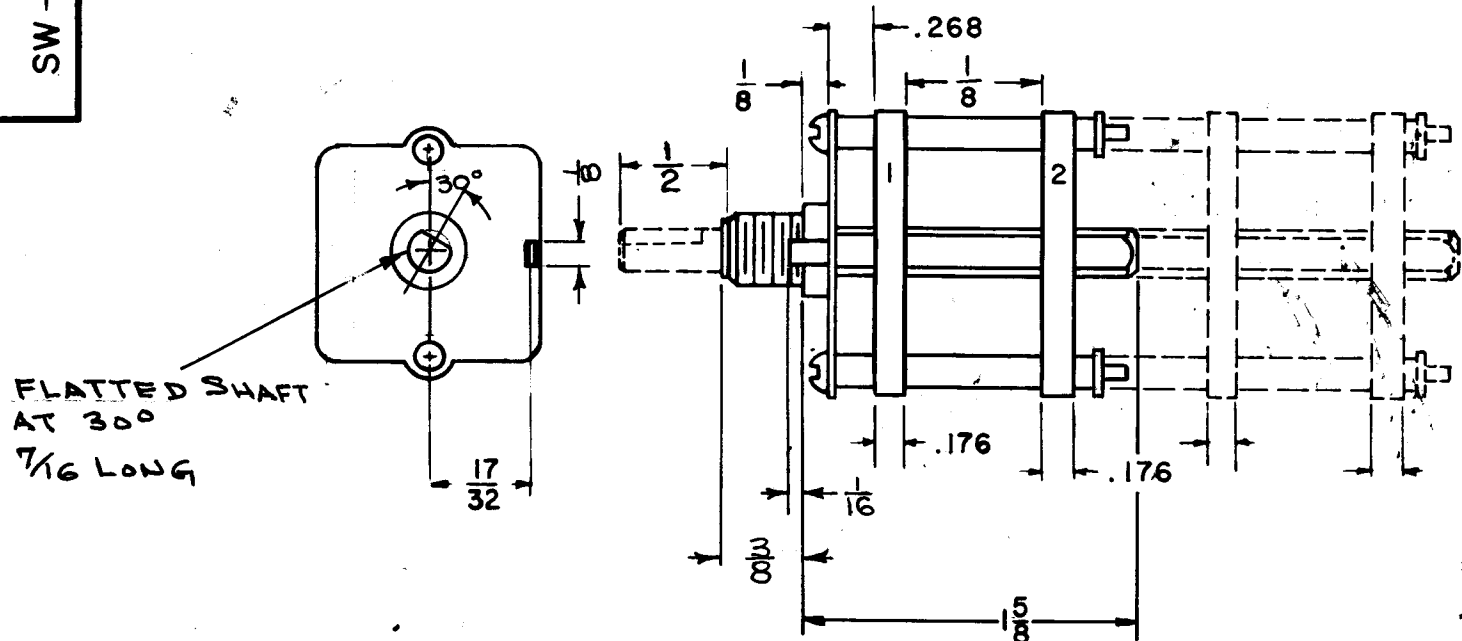


A

SW-302

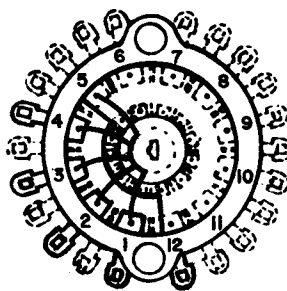
THE CONTENTS OF THIS DRAWING ARE THE EXCLUSIVE PROPERTY OF THE TECHNICAL MATERIEL CORP. ITS UNAUTHORIZED USE OR REPRODUCTION IN WHOLE OR IN PART IS STRICTLY FORBIDDEN.

IF LOCATED FLAT OR SLOT REQUIRED SHOW CUT-AWAY PORTION IN SOLID BLACK IN EXTREME C.C.W. POSITION. INDICATE ANGLE.



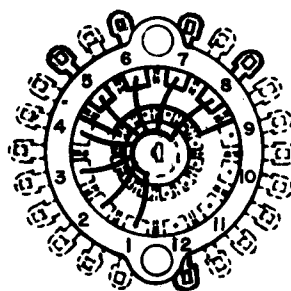
FLATTED SHAFT AT 30° 7/16 LONG

TMC PART NO.	SW-302
<input type="checkbox"/> 8	TOTAL NO. OF POSITIONS
<input type="checkbox"/> 2	TOTAL NO. OF SECTIONS
<input type="checkbox"/>	SHORTING CONTACTS
<input checked="" type="checkbox"/>	NON SHORTING CONTACTS
FINISH REQUIREMENT	
<input type="checkbox"/>	50 HR. SALT SPRAY
<input type="checkbox"/>	200 HR. SALT SPRAY
<input type="checkbox"/>	ALL STAINLESS
HARDWARE (CHECK IF REQUIRED)	
<input type="checkbox"/>	NUTS 3/8-32, 1/2 ACROSS FLATS, 3/32 THICK.
<input type="checkbox"/>	3/8 INTERNAL TOOTH LOCKWASHERS 11/16 O.D. X 1/32 THICK.
<input type="checkbox"/>	CHECK HERE IF ADDITIONAL SPECIFICATIONS ON OPPOSITE SIDE.
<input checked="" type="checkbox"/>	SPECIAL INSTRUCTIONS
FREE RUNNING DETENT (NO STOPS)	



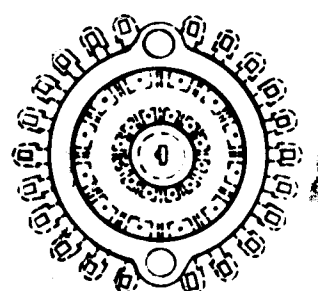
SECTION 1

WS-128-2

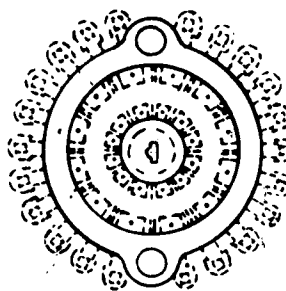


SECTION 2

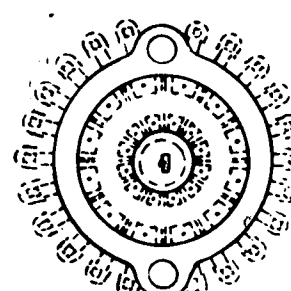
WS-128-1



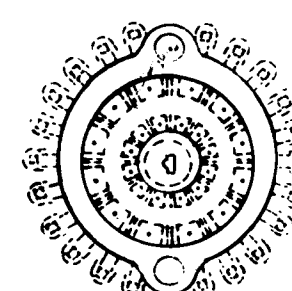
SECTION 3



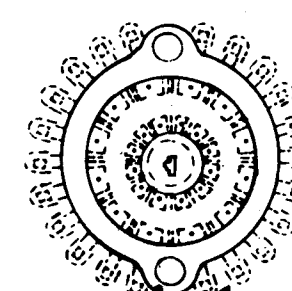
SECTION 4



SECTION 5



SECTION 6



SECTION 7

REQ.	ITEM	PART NO.	DESCRIPTION	SYMBOL
STOCK SIZE			THE TECHNICAL MATERIEL CORP. MAMARONECK, NEW YORK	
MATERIAL				
			SWITCH, ROTARY DETECTION	
			G.D.L.	BP
TYPE & TEMPER			DRAWN	
HEAT TREAT. SPEC.			CHECKED	FINAL APPROVAL
FINISH & SPEC. NO.			A.R. Fair	
			ELEC. DES. APP.	MECH. DES. APP.
			SW-302	
			A	

A	ADDED (TYPE 211) TO S401-175, DELETED (LOCATING KEY DIMS CLARIFIED, DELETED LOCATING KEY NOTE)	4-17-63	B802			
SYM	DESCRIPTION	DATE	CH. NO.	DRAFTS	CHECKER	ENG. APP.
UNLESS OTHERWISE SPECIFIED:		SCALE: DO NOT SCALE (S401-175 (TYPE 211))				
DIMENSIONS ARE IN INCHES		MAXIMUM ALLOWABLE TOLERANCES HAVE BEEN DETERMINED AND ANY DEVIATIONS WILL BE CAUSE FOR REJECTION.				
TOLERANCES ON FRACTIONS ± 1/64 DECIMALS ± .005 ANGLES ± 1/2°		REMOVE ALL BURRS AND SHARP EDGES				
		4	HAF-1		A-2397	-62
		REQ. PER UNIT	MODEL	SECTION	ASS'Y. NO.	DATE
		USED ON				