

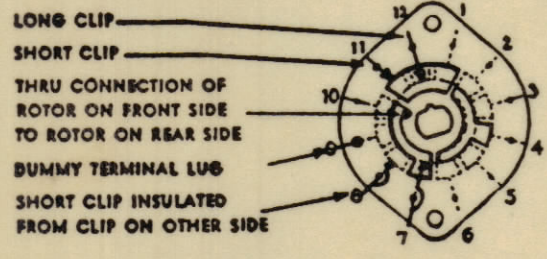
NON-SHORTING TYPE CONTACTS, SECTIONS 1,6,7.
SHORTING TYPE CONTACTS, SECTIONS 3,5
DUMMY TYPE CONTACTS, SECTIONS 2,4

NOTE - REMOVE ROTATION STOP, TO PERMIT CONTINUOUS ROTATION.

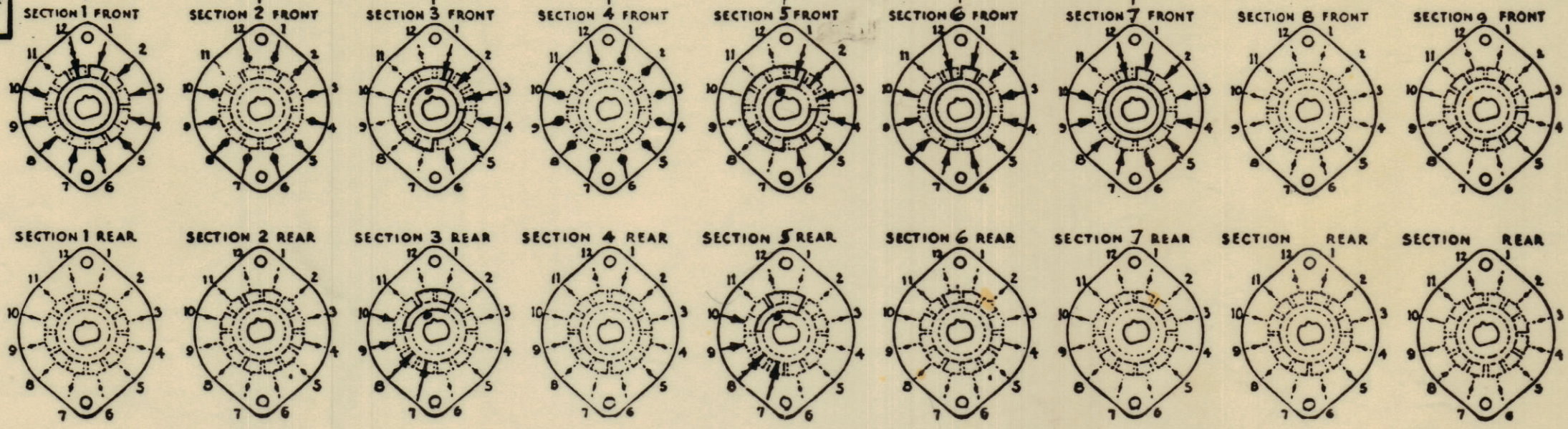
SHOW CUT AWAY PORTION OF FLAT IN BLACK AND GIVE ANGLE TO LINE A-A, ± 3° STANDARD RMA KNURLED AND SLOTTED SHAFT ALSO AVAILABLE

FRONT AND REAR OF SECTIONS VIEWED FROM FRONT OR KNOB END OF SWITCH IN EXTREME COUNTER-CLOCKWISE POSITION

SYMBOLS USED IN MARKING PRINT

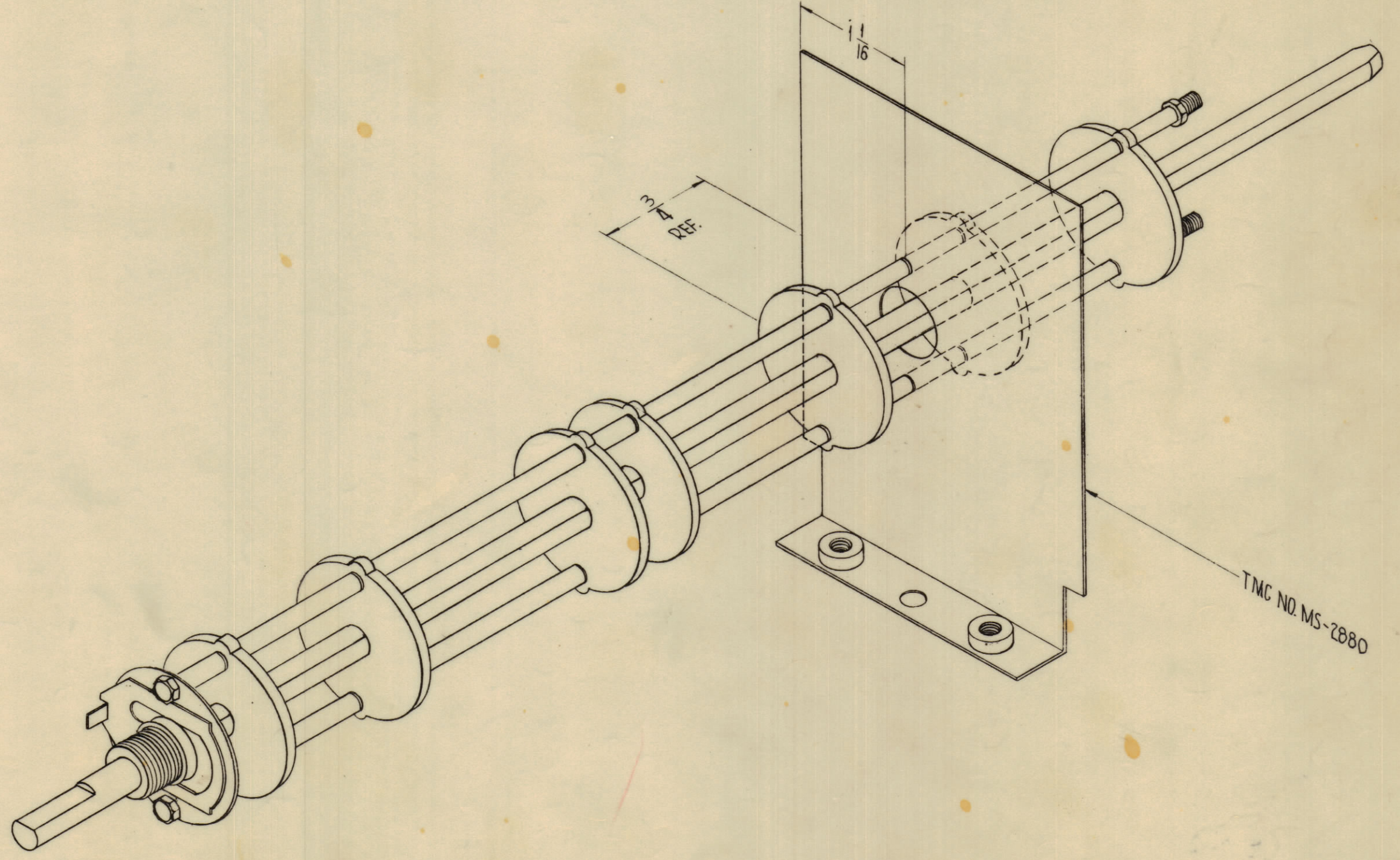


NUMBER OF SECTIONS $\frac{7}{12}$
NUMBER OF POSITIONS $\frac{12}{12}$
ANGLE OF THROW 30° (30° OR 40°)



SPECIFICATIONS
SHORTING TYPE CONTACTS NON-SHORTING IF NOT SPECIFIED SHORTING TYPE WILL BE SUPPLIED.
INSULATION: BAKELITE MYCALEX SPECIFY IMPREGNATION IF REQUIRED
FINISH REQUIREMENTS: COMMERCIAL ; ARMY ; NAVY ; SALT TEST (IF ANY GIVE DETAILS)
CONTACTS AND ROTORS: SILVER PLATED BRASS ; SOLID SILVER ALLOY ; IF NOT SPECIFIED SILVER PLATED BRASS WILL BE SUPPLIED.
MOUNTING HARDWARE: SUPPLY $1 \frac{3}{8}$ " .32 NUTS $\frac{1}{2}$ " ACROSS FLATS; MATERIAL BRASS PLATING NICKEL
STAMP PART NUMBER SW-293 $\frac{3}{16}$ " INTERNAL TOOTH LOCKWASHER; MATERIAL PLATING
(NUMBER) ON FRONT PLATE, YES NO

NOTES -
BRACKET MS-2880 SUPPLIED BY TMC AND ASSEMBLED AS SHOWN.



NOTE - CONTACTS LEFT OFF OF WAFERS FOR PURPOSE OF CLARITY.

| | | | | | | | |
|--------------------------------|------|----------------------|--|---------|---------------|---------|-----------|
| SYM | ZONE | DESCRIPTION | DATE | CH. NO. | DRAFTS | CHECKER | ENG. APP. |
| A | | SHAFT "FLAT" REVISED | 1/3/69 | 19159 | 47 | JDA | op JDA |
| UNLESS OTHERWISE SPECIFIED: | | | SCALE | | | | |
| DIMENSIONS ARE IN INCHES | | | MAXIMUM ALLOWABLE TOLERANCES HAVE BEEN DETERMINED AND ANY DEVIATIONS WILL BE CAUSE FOR REJECTION. REMOVE ALL BURRS & SHARP EDGES | | | | |
| TOLERANCES ON FRACTIONS ± 1/64 | | | DECIMALS ± .005 | | ANGLES ± 1/2° | | |

| REQ. PER UNIT | MODEL | SECTION | ASSY. NO. | DATE |
|---------------|-------|-----------|-----------|---------|
| 1 | HFS-1 | 3100 DECK | | 8-15-62 |
| USED ON | | | | |

| | | | | |
|--------------------|----------|---|-------------|----------------|
| REQ. ITEM | PART NO. | J. STRUMMER | DESCRIPTION | SYMBOL |
| STOCK SIZE | | THE TECHNICAL MATERIEL CORP. MAMARONECK, NEW YORK | | |
| MATERIAL | | SWITCH, ROTARY 3100 DECK | | |
| TYPE & TEMPER | | HEAT TREAT. SPEC. | | |
| FINISH & SPEC. NO. | | ELEC. DES. APP. MECH. DES. APP. SHEET OF | | |
| DRAWN | | CHECKED | | FINAL APPROVAL |
| JMA | | JMA | | SW-293 A |