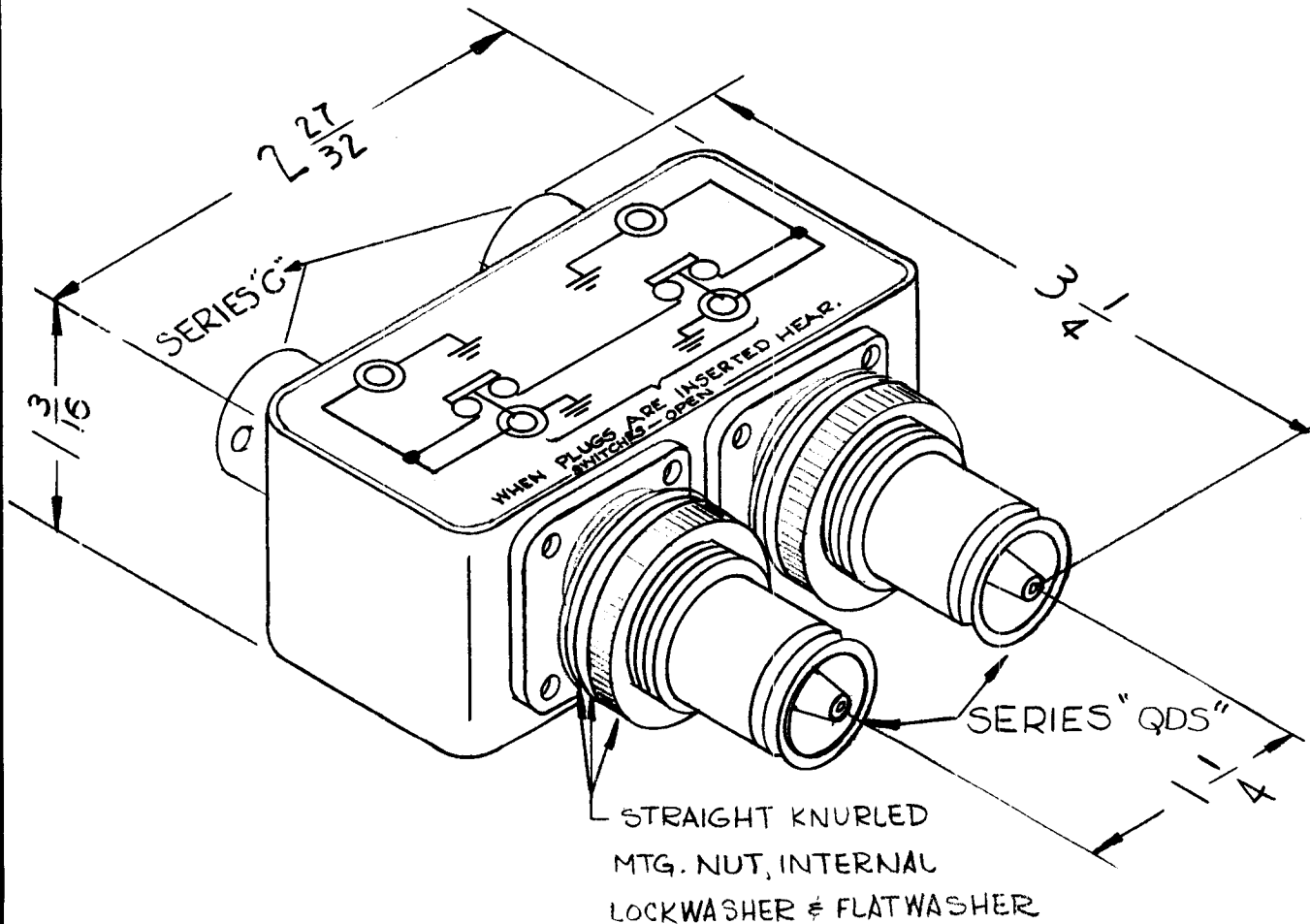


(APPROX DIMENSIONS)

REQ. PER UNIT	USED ON		
	MODEL	ASS'Y. NO.	DATE
	SPP-15B11		4-14-61

SW-284 B



NOTES:

1. CASE: MATERIAL - BRASS
FINISH - S115 TMC
SMOOTH GRAY ENAMEL
2. CONNECTORS FINISH:
BODIES - RHODIUM FLASH
CONTACTS - GOLD FLASH
3. FOR MOUNTING: 13/16 DIA.
HOLES REQ.
4. MAX. PANEL THICKNESS:
3/16

NOTE: ASSIGNED PATENT NO. 2,767,267

REQ.	ITEM	PART NO.	DESCRIPTION				SYMBOL			
			THE TECHNICAL MATERIEL CORP. MAMARONECK, NEW YORK							
			STOCK SIZE							
B			SWITCH R.F.							
A	2		DUAL QDS TO DUAL "C"							
	1		MATERIAL							
ISSUE	ITEM	CHANGED FROM	DATE	CH. NO.	DRAFTS	CHECKER	ENG. APP.			
TOLERANCES			SCALE: 2A-2085							
DEC. DIM. ±			MAXIMUM ALLOWABLE TOLERANCES HAVE BEEN DETERMINED AND ANY DEVIATIONS WILL BE CAUSE FOR REJECTION. REMOVE ALL BURRS AND SHARP EDGES							
FRAC. DIM. ±							TYPE & TEMPER	HEAT TREAT. SPEC.	DRAWN	CHECKED
ANGULAR DIM. ±							FINISH & SPEC. NO.		ELEC. DES. APP.	MECH. DES. APP.
						RUZZO <i>[Signature]</i> 16 <i>[Signature]</i>				
						SW-284 B				