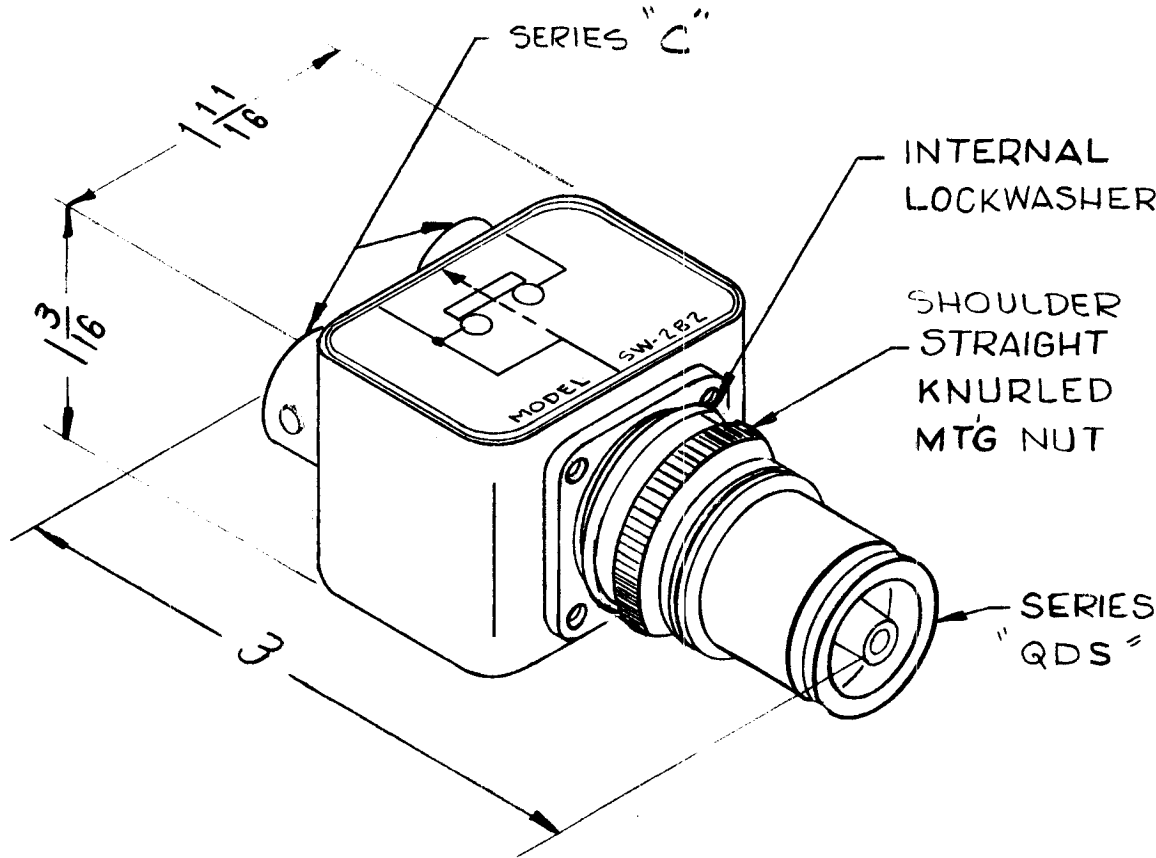


(APPROX DIMENSIONS)

REQ. PER UNIT	USED ON		
	MODEL	ASS'Y. NO.	DATE
1	SPP-14		4-13-61

SW-282 B



NOTES

- 1~ CASE MATERIAL-BRASS  
FINISH-S115 TMC SMOOTH  
GRAY ENAMEL.
- 2~ CONNECTORS FINISH:  
BODIES-RHODIUM FLASH.  
CONTACTS-GOLD FLASH.
- 3~ FOR MOUNTING-13/16 DIA  
HOLE REQ.
- 4~ MAX PANEL THICKNESS-3/16.

NOTE: ASSIGNED PATENT NO. 2,  
767,267

ISSUE	ITEM	CHANGED FROM	DATE	CH. NO.	DRAFTS	CHECKER	ENG. APP.	REQ. ITEM	PART NO.	DESCRIPTION	SYMBOL				
										<b>THE TECHNICAL MATERIEL CORP.</b> MAMARONECK. NEW YORK <b>SWITCH, RF</b> <b>DUAL TYPE "C" to SINGLE "QDS"</b>					
B		PATENT NOTE ADDED	9/30/65	14846	P.L.	QCP			STOCK SIZE						
A	1	COMPLETELY UPDATED	2-12-63	8178		X12			SEE NOTES						
									MATERIAL						
TOLERANCES			SCALE: 2A-2086								R. UZZO				
DEC. DIM. ± FRAC. DIM. ± ANGULAR DIM. ±			MAXIMUM ALLOWABLE TOLERANCES HAVE BEEN DETERMINED AND ANY DEVIATIONS WILL BE CAUSE FOR REJECTION. REM VE ALL BURRS AND SHARP EDGES								TYPE & TEMPER	HEAT TREAT. SPEC.	DRAWN	CHECKED	FINAL APPROVAL
											SEE NOTES				
											FINISH & SPEC. NO.	ELEC. DES. APP.	MECH. DES. APP.	SW-282 B	