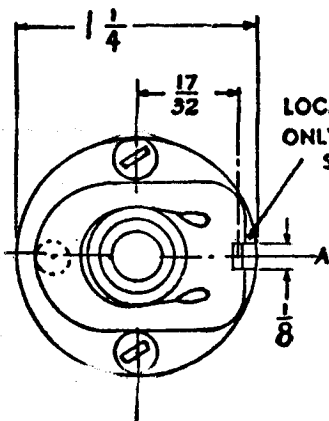


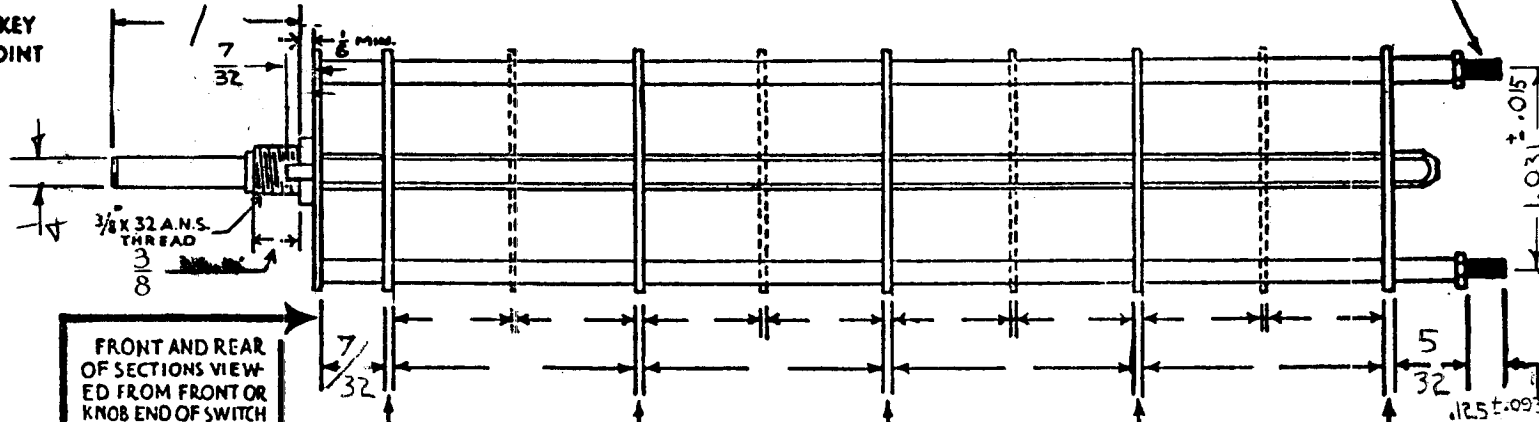
SW-281-D

# OAK TYPE F SWITCH



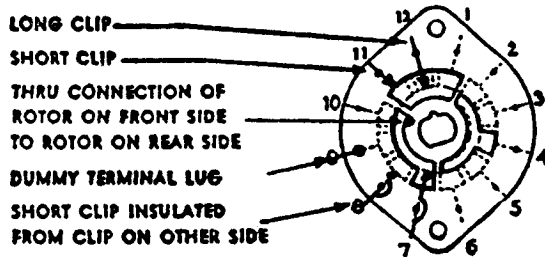
LOCATING KEY ONLY AT POINT SHOWN

SHOW CUT AWAY PORTION OF FLAT IN BLACK AND GIVE ANGLE TO LINE A-A, ± 3°  
STANDARD RMA KNURLED AND SLOTTED SHAFT ALSO AVAILABLE

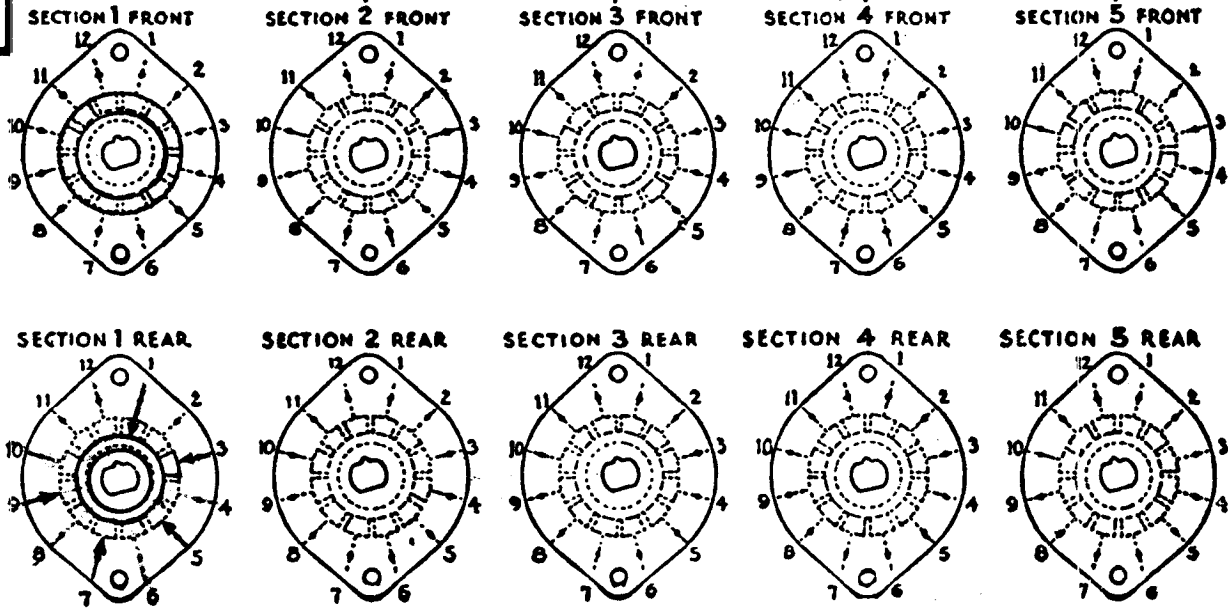


NUMBER OF SECTIONS  $\frac{1}{2}$   
 NUMBER OF POSITIONS  $\frac{1}{2}$   
 ANGLE OF THROW  $60^\circ$  (OR  $60^\circ$ )

### SYMBOLS USED IN MARKING PRINT



UTLINE ROTOR BLADES AS SHOWN ABOVE WITH SWITCH IN EXTREME COUNTER-CLOCKWISE POSITION



CUSTOMER NOTES

### SPECIFICATIONS

SHORTIN TYPE CONTACTS  NON-SHORTING  IF NOT SPECIFIED SHORTING TYPE WILL BE SUPPLIED.  
 INSULATION:  $\frac{1}{16}$ " BAKELITE   $\frac{1}{8}$ " MYCALEX  SPECIFY IMPREGNATION IF REQUIRED.  
 FINISH REQUIREMENTS: COMMERCIAL  ARMY  NAVY  SALT TEST (IF ANY GIVE DETAILS).  
 CONTACTS AND ROTORS: SILVER PLATED BRASS  SOLID SILVER ALLOY  IF NOT SPECIFIED SILVER PLATED BRASS WILL BE SUPPLIED.  
 MOUNTING HARDWARE: SUPPLY  $\frac{1}{8}$ " - 32 NUTS \_\_\_\_\_ ACROSS FLATS; MATERIAL STEEL PLATING CAD  
 $\frac{1}{8}$ " INTERNAL TOOTH LOCKWASHER; MATERIAL STEEL PLATING CAD

STAMP PART NUMBER SW-281 (NUMBER) ON FRONT PLATE, YES  NO

|                                    |                            |
|------------------------------------|----------------------------|
| SWITCH, ROTARY                     |                            |
| THE TECHNICAL MATERIAL CORPORATION |                            |
| MAMARONECK, NEW YORK               |                            |
| DATE <u>9-22-60</u>                | CHKD. <u>[Signature]</u>   |
| DRAWN                              | APPD. <u>[Signature]</u>   |
| SHEET _____ OF _____               | NO. <u>SW-281</u> <u>D</u> |

MODEL-TIS-3

DATE 9-22-60

DATE 88-66 16726 RMA SW281 D  
 DATE 5/32/125 ± .093, 1.013 ± .015, DELE 15/16, CHG D, DIM FR. 3/16 TO 7/32, CHG'D POS. OF 7/32 D, LINE, CHG'D MAT'G, HDW.  
 SYM D DESCRIPTION