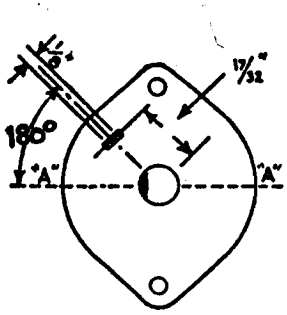


SW-279-I

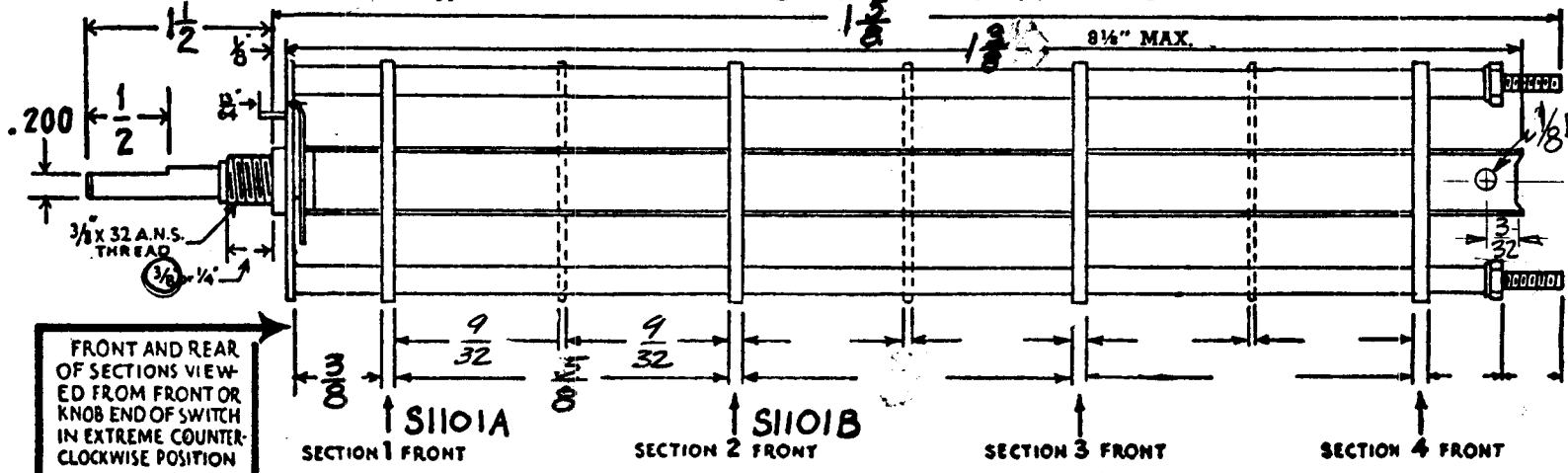
DL  
(Type Desired)

# 18 POINT SWITCH

SW-279-D



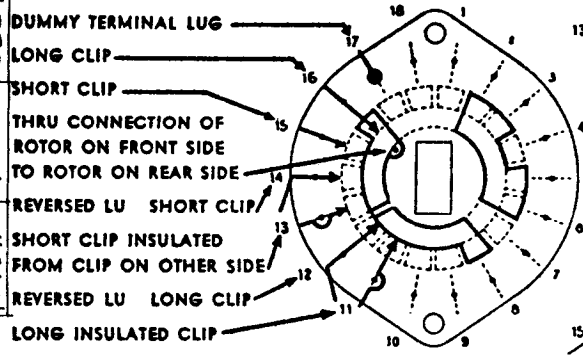
DRAW IN FLAT ON ABOVE SHAFT IN EXTREME COUNTER CLOCKWISE POSITION AND SHOW ANGLE IN REFERENCE TO LINE "A-A"



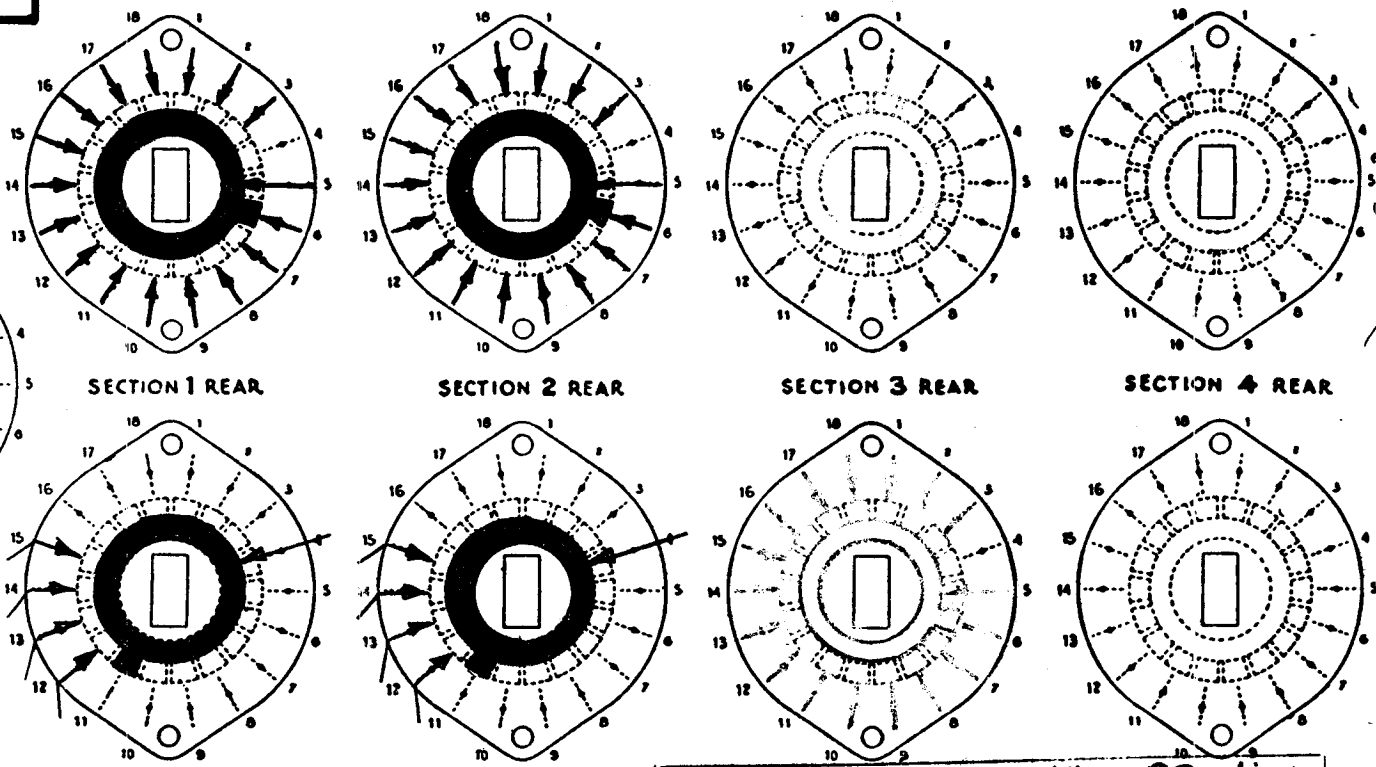
NUMBER OF SECTIONS 2  
NUMBER OF POSITIONS 16

### SYMBOLS USED IN MARKING PRINT

I REQ CHG MF/RF PER UNIT MODEL SECTION



OUTLINE ROTOR BLADES AS SHOWN ABOVE WITH SWITCH IN EXTREME COUNTER-CLOCKWISE POSITION  
TYPE L HAS CONTACTS MOUNTED BY A SINGLE EYELET.  
SECTION IS OVAL 1 1/2" x 2 1/2"  
TYPE DL HAS CONTACTS MOUNTED BY TWO EYELETS.  
SECTION IS 2 1/2" x 2 1/2"



### CHECK ALL SPECIFICATIONS BELOW.

SHORTING TYPE CONTACTS  NON-SHORTING   
IF NOT SPECIFIED SHORTING TYPE WILL BE SUPPLIED.  
INSULATION: 5/64" BAKELITE  SPECIFY IMPREGNATION IF REQUIRED \_\_\_\_\_  
CONTACTS AND ROTORS: SILVER PLATED BRASS  SOLID SILVER ALLOY  IF NOT SPECIFIED SILVER PLATED BRASS WILL BE SUPPLIED.  
MOUNTING HARDWARE: SUPPLY \_\_\_\_\_ 3/8" - 32 NUTS \_\_\_\_\_ ACROSS FLATS; MATERIAL \_\_\_\_\_ PLATING \_\_\_\_\_  
\_\_\_\_\_ 3/16" INTERNAL TOOTH LOCKWASHER; MATERIAL \_\_\_\_\_ PLATING \_\_\_\_\_  
STAMP PART NUMBER SW-279 ON FRONT PLATE, YES  NO   
(NUMBER)

SWITCH, ROTARY, 16 Position, 2 Sections

THE TECHNICAL MATERIAL CORPORATION  
MAMARONECK, NEW YORK

DATE 9-6-60 CHKD. J. ANGER  
DRAWN D. J. Moran APPD. \_\_\_\_\_  
SHEET 1 OF 1 NO. SW-279 ID

NOTE: "INDEX TYPE" SINGLE BALL WITH BRASS SPRING.

