

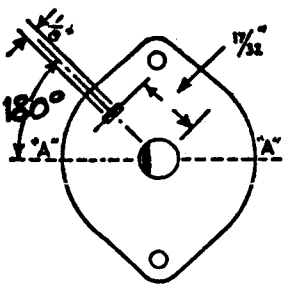
CUSTOMER'S PART NO. SW-278-E

OAK TYPE

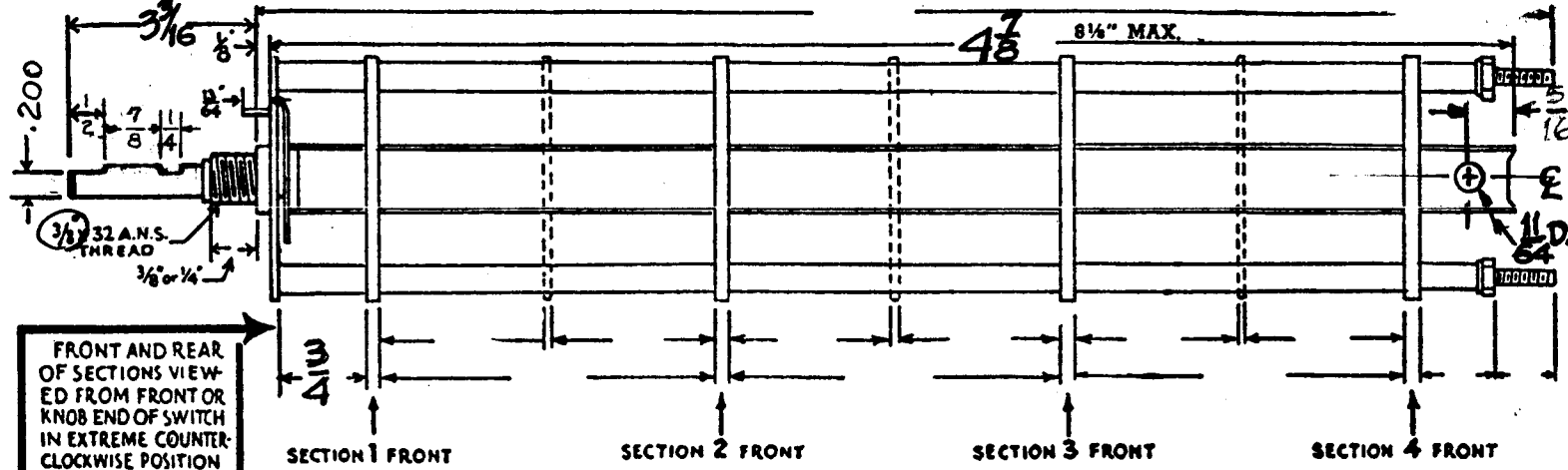
DL
(Circle Type Desired)

18 POINT SWITCH

SW-278-E



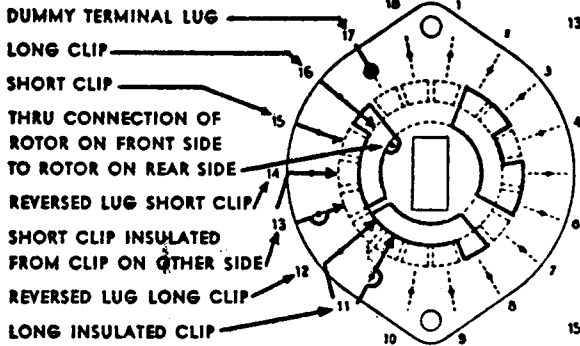
DRAW IN FLAT ON ABOVE SHAFT IN EXTREME COUNTER CLOCKWISE POSITION AND SHOW ANGLE IN REFERENCE TO LINE "A-A"



FRONT AND REAR OF SECTIONS VIEWED FROM FRONT OR KNOB END OF SWITCH IN EXTREME COUNTER-CLOCKWISE POSITION

NUMBER OF SECTIONS 1
NUMBER OF POSITIONS 16

SYMBOLS USED IN MARKING PRINT



OUTLINE ROTOR BLADES AS SHOWN ABOVE WITH SWITCH IN EXTREME COUNTER-CLOCKWISE POSITION

TYPE L HAS CONTACTS MOUNTED BY A SINGLE EYELET.
SECTION IS OVAL 1 1/2" x 2 1/2"
TYPE DL HAS CONTACTS MOUNTED BY TWO EYELETS.
SECTION IS 2 1/2" x 2 1/2"

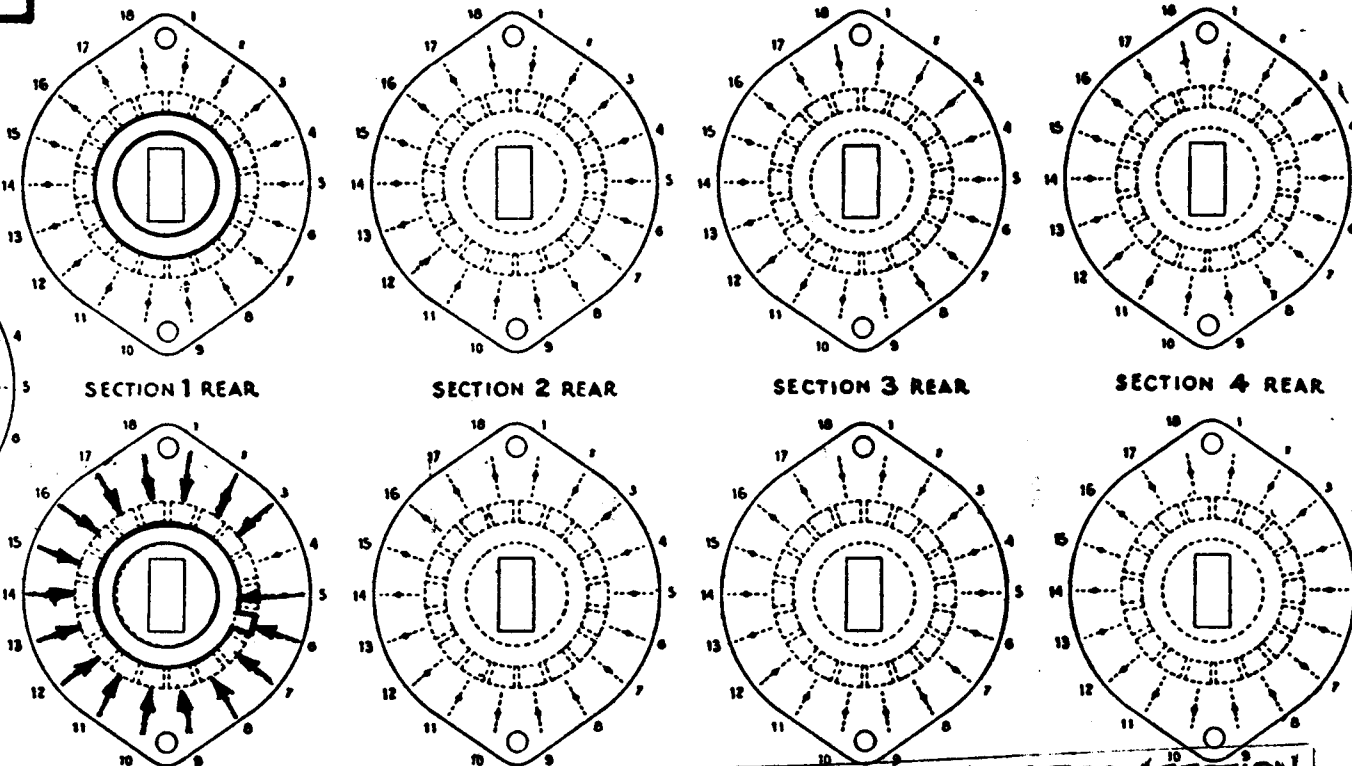
CHECK ALL SPECIFICATIONS BELOW.

SHORTING TYPE CONTACTS NON-SHORTING
IF NOT SPECIFIED SHORTING TYPE WILL BE SUPPLIED.
INSULATION: 5/64" BAKELITE SPECIFY IMPREGNATION IF REQUIRED _____
CONTACTS AND ROTORS: SILVER PLATED BRASS SOLID SILVER ALLOY IF NOT SPECIFIED SILVER PLATED BRASS WILL BE SUPPLIED.
MOUNTING HARDWARE: SUPPLY 3/16" - 32 NUTS ACROSS FLATS; MATERIAL _____ PLATING _____
3/16" INTERNAL TOOTH LOCKWASHER; MATERIAL _____ PLATING _____

STAMP PART NUMBER SW-278 ON FRONT PLATE, YES NO
(NUMBER)

FORM 8-5

NOTE: "INDEX TYPE" SINGLE BALL WITH BRASS SPRING



CUSTOMER CHG 51501 / REQ

CUSTOMER

OAK MFG CO. CHICAGO 10, ILL

SWITCH, ROTARY 16 POS., 1 SECTION

THE TECHNICAL MATERIAL CORPORATION
MAMARONECK, NEW YORK

DATE 9-6-60 CHKD. [Signature]
DRAWN D.J. [Signature] APPD. [Signature]
SHEET 1 OF 1 NO. SW-278 E

