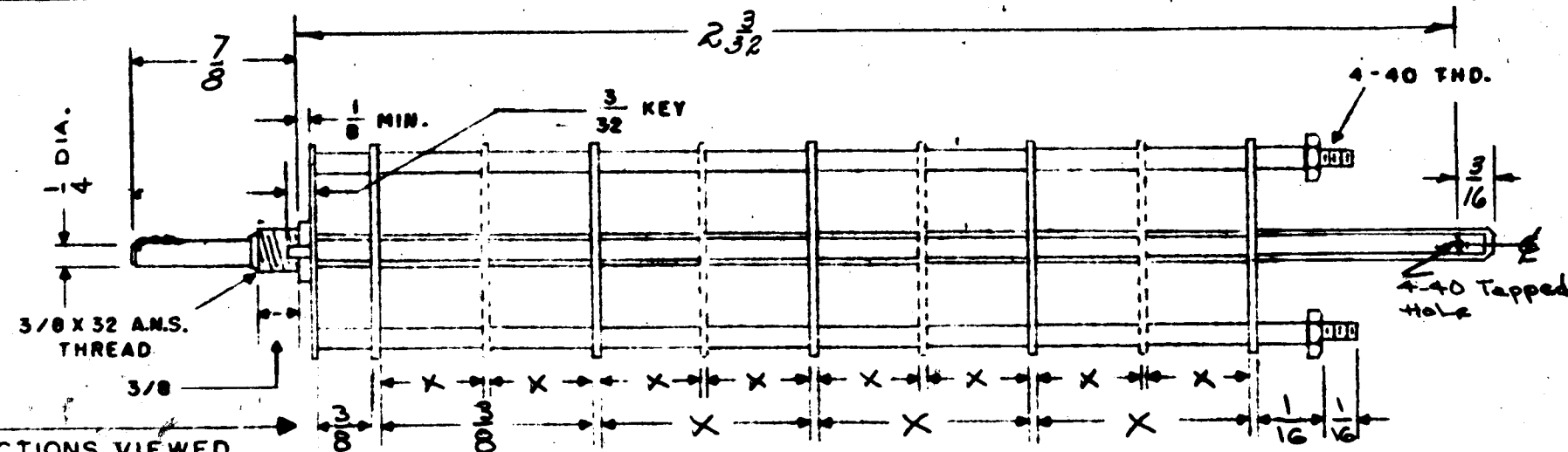
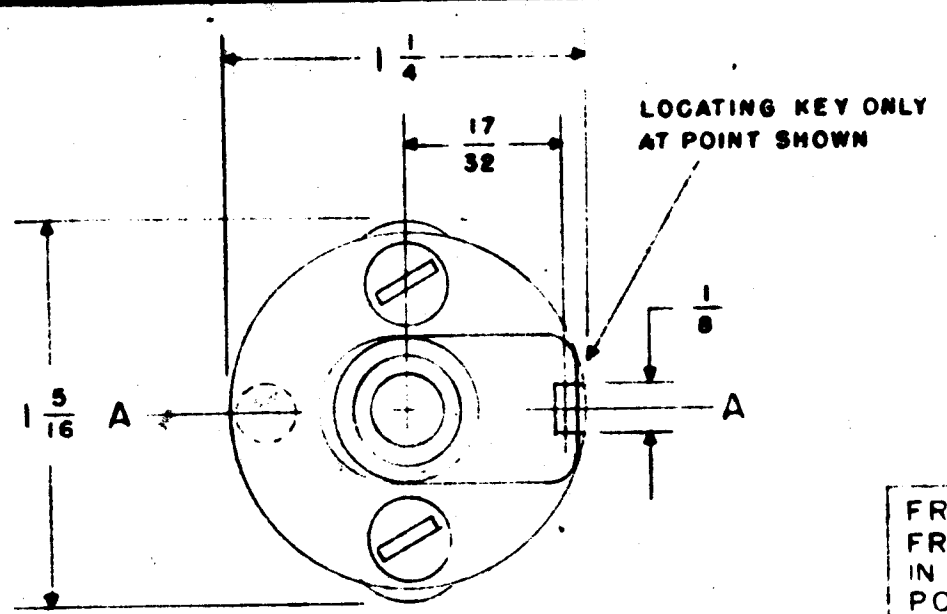


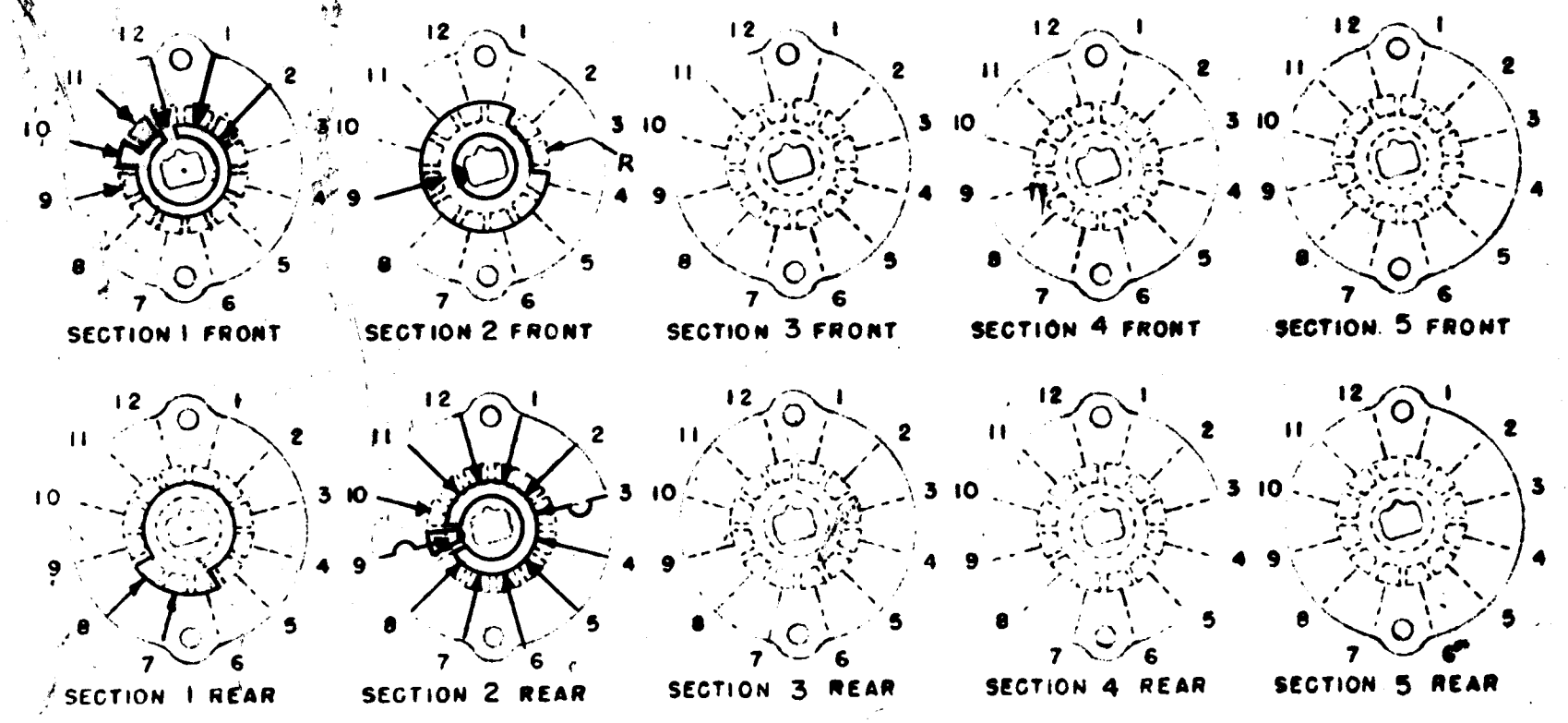
SW-273 A



FRONT & REAR OF SECTIONS VIEWED FROM FRONT OR KNOB END OF SWITCH IN EXTREME COUNTER-CLOCKWISE POSITION

SHOW CUT AWAY PORTION OF FLAT IN BLACK AND GIVE ANGLE TO LINE A-A ± 3°. (STANDARD RMA KNURLED AND SLOTTED SHAFT ALSO AVAILABLE)

NUMBER OF SECTIONS 2
 NUMBER OF POSITIONS 12 WITH STOP
 ANGLE OF THROW 30° (30° OR 60°)



MARK WITH TMC
 PART NUMBER SW-273
 STAMP ON FRONT PLATE YES X NO

CONTACTS & ROTORS: (IF NOT SPECIFIED, SHORTING TYPE WILL BE SUPPLIED)
 SHORTING X NON SHORTING

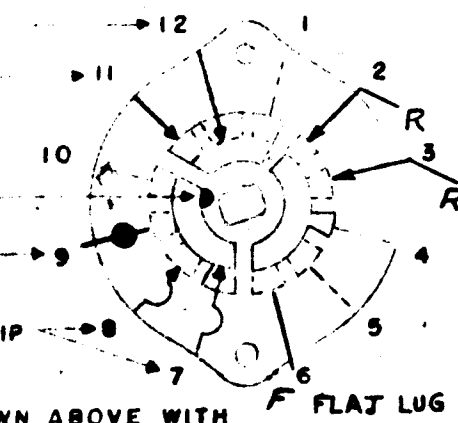
MATERIAL: (IF NOT SPECIFIED, SILVER PLATED BRASS WILL BE SUPPLIED)
 SILVER PLATED BRASS X SILVER ALLOY

INSULATION: 1/16 BAKELITE 1/8 MYCALEX X
 SPECIFY IMPREGNATION IF REQUIRED

FINISH REQUIREMENTS: COMMERCIAL X ARMY NAVY
 SALT TEST (IF ANY GIVE DETAILS)

HARDWARE SUPPLY
X 3/8-32 NUTS 2 ACROSS FLATS
X 3/8 INTERNAL TOOTH LOCKWASHERS

LONG CLIP
 SHORT CLIP
 THRU CONNECTION OF ROTOR ON FRONT SIDE TO ROTOR ON REAR SIDE
 DUMMY TERMINAL LUG
 CLIP INSULATED FROM CLIP ON OTHER SIDE



SYMBOLS USED IN MARKING PRINT
 SHORT CLIP REVERSE LUG
 LONG CLIP REVERSE LUG
 OAK TYPE F SWITCH

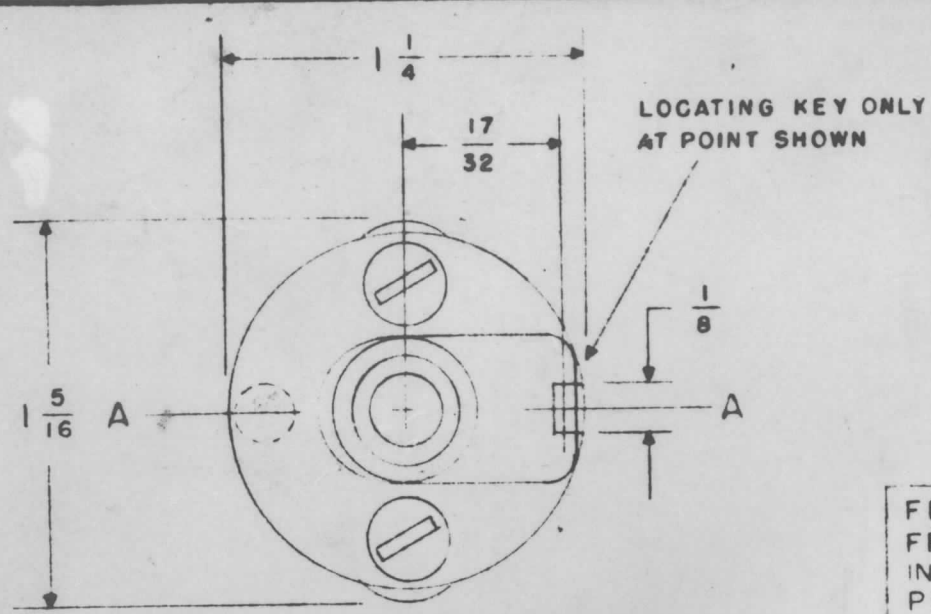
OUTLINE ROTOR BLADES AS SHOWN ABOVE WITH SWITCH IN EXTREME COUNTER-CLOCKWISE POSITION

A	CLERICAL CHANGE	3/24/45	12	J.L.		
ISSUE ITEM	CHANGED FROM	DATE	CH. NO.	DRAFTS	CHECKER	ENG. APP.
TOLERANCES		SCALE:				
DEC. DIM. ±		MAXIMUM ALLOWABLE TOLERANCES HAVE BEEN DETERMINED AND ANY DEVIATIONS WILL BE CAUSE FOR REJECTION.				
PRAC. DIM. ±		REMOVE ALL BURRS AND SHARP EDGES				
ANGULAR DIM. ±						

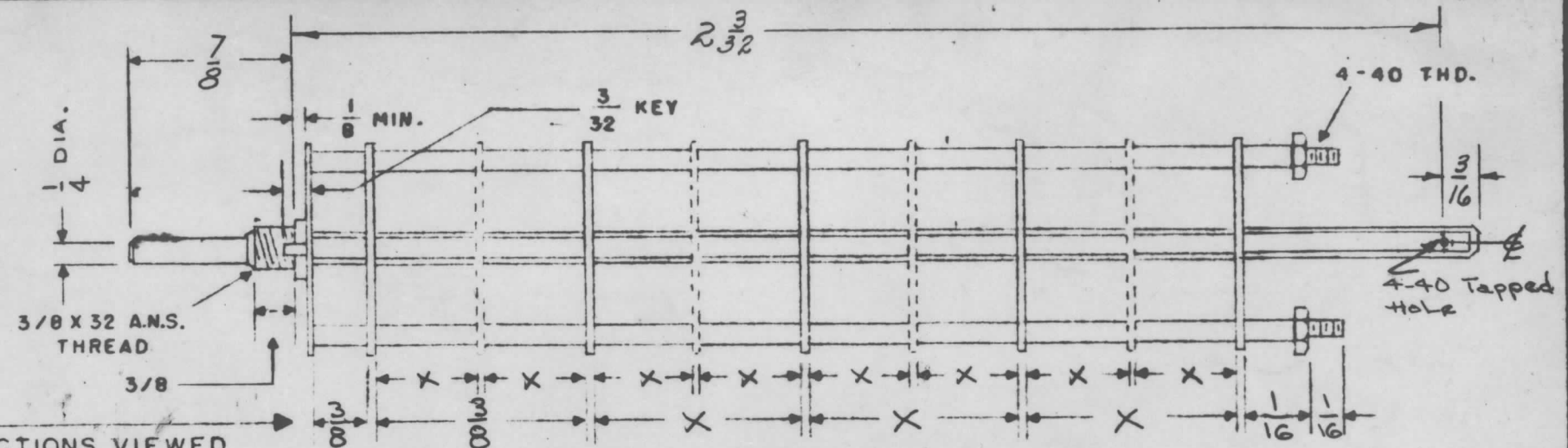
1	GPR 90 RXD				
REQ. PER UNIT	MODEL	PROJECT NO.	ASSY. NO.	DATE	
USED ON					

REQ. ITEM	PART NO.	DESCRIPTION	SYMBOL
		THE TECHNICAL MATERIEL CORP. MAMARONECK, NEW YORK	
STOCK SIZE		HFO SWITCH	
MATERIAL		GPR 90 RXD 12 POSITION	
TYPE & TEMPER	HEAT TREAT. SPEC.	A DRAWN	
FINISH & SPEC. NO.	ELEC. DES. APP.	MECH. DES. APP.	

SW-273 A



SHOW CUT AWAY PORTION OF FLAT IN BLACK AND GIVE ANGLE TO LINE A-A $\pm 3^\circ$. (STANDARD RMA KNURLED AND SLOTTED SHAFT ALSO AVAILABLE)



FRONT & REAR OF SECTIONS VIEWED FROM FRONT OR KNOB END OF SWITCH IN EXTREME COUNTER-CLOCKWISE POSITION

NUMBER OF SECTIONS 2
 NUMBER OF POSITIONS 12 WITH STOP
 ANGLE OF THROW 30° (30° OR 60°)

MARK WITH TMC
 PART NUMBER SW-273
 STAMP ON FRONT PLATE YES X NO

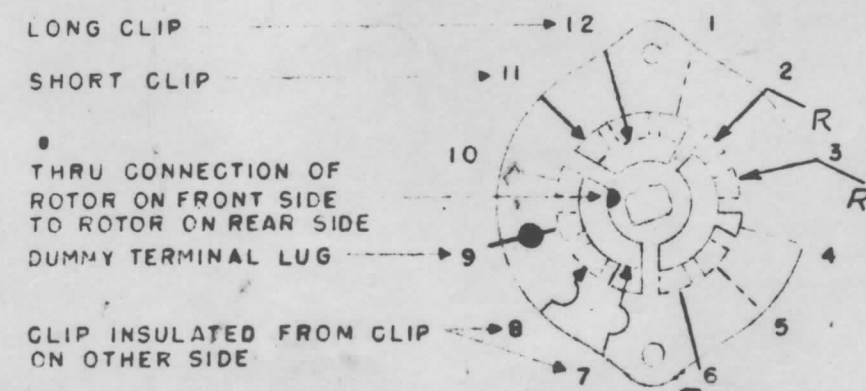
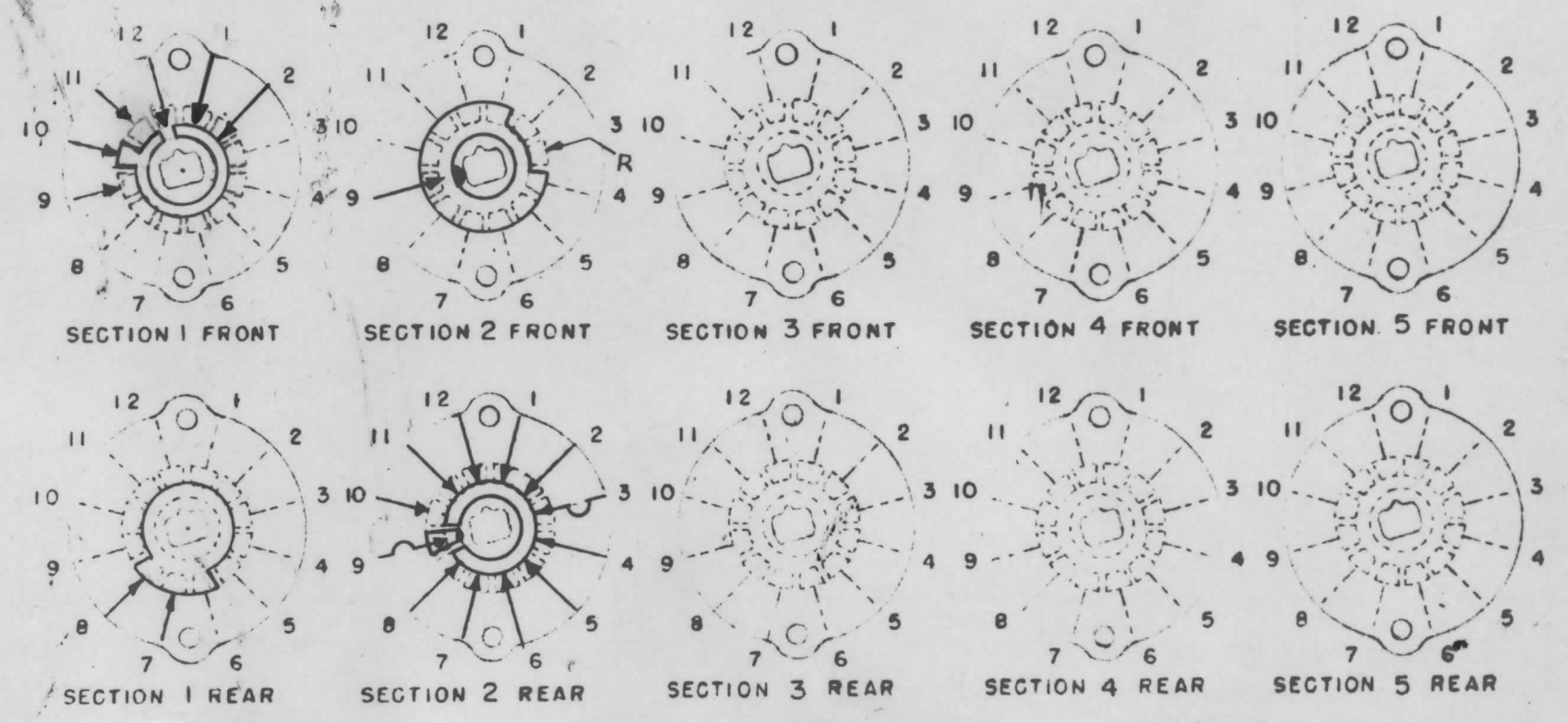
CONTACTS & ROTORS: (IF NOT SPECIFIED, SHORTING TYPE WILL BE SUPPLIED)
 SHORTING X NON SHORTING

MATERIAL: (IF NOT SPECIFIED, SILVER PLATED BRASS WILL BE SUPPLIED)
 SILVER PLATED BRASS X SILVER ALLOY

INSULATION: 1/16 BAKELITE 1/8 MYCALEX X
 SPECIFY IMPREGNATION IF REQUIRED

FINISH REQUIREMENTS: COMMERCIAL X ARMY NAVY
 SALT TEST (IF ANY GIVE DETAILS)

HARDWARE: SUPPLY
X 3/8-32 NUTS 2 ACROSS FLATS
X 3/8 INTERNAL TOOTH LOCKWASHERS



SYMBOLS USED IN MARKING PRINT
 SHORT CLIP REVERSE LUG
 LONG CLIP REVERSE LUG
 OAK TYPE F SWITCH

OUTLINE ROTOR BLADES AS SHOWN ABOVE WITH SWITCH IN EXTREME COUNTER-CLOCKWISE POSITION

A	CLERICAL CHANGE	33065	12	J.L.		
ISSUE ITEM	CHANGED FROM	DATE	CH. NO.	DRAFTS	CHECKER	ENG. APP.
TOLERANCES		SCALE:				
DEC. DIM. \pm		MAXIMUM ALLOWABLE TOLERANCES HAVE BEEN DETERMINED AND ANY DEVIATIONS WILL BE CAUSE FOR REJECTION.				
FRAC. DIM. \pm		REMOVE ALL BURRS AND SHARP EDGES				
ANGULAR DIM. \pm						

1	GPR 90 RXD				
REQ. PER UNIT	MODEL	PROJECT NO.	ASS'Y. NO.	DATE	
USED ON					

REQ. ITEM	PART NO.	DESCRIPTION	SYMBOL
THE TECHNICAL MATERIEL CORP. MAMARONECK, NEW YORK			
STOCK SIZE		HFO SWITCH	
MATERIAL		GPR 90 RXD 12 POSITION	
TYPE & TEMPER	HEAT TREAT. SPEC.	DRAWN	CHECKED
FINISH & SPEC. NO.		ELEC. DES. APP.	MECH. DES. APP.
		SW-273 A	