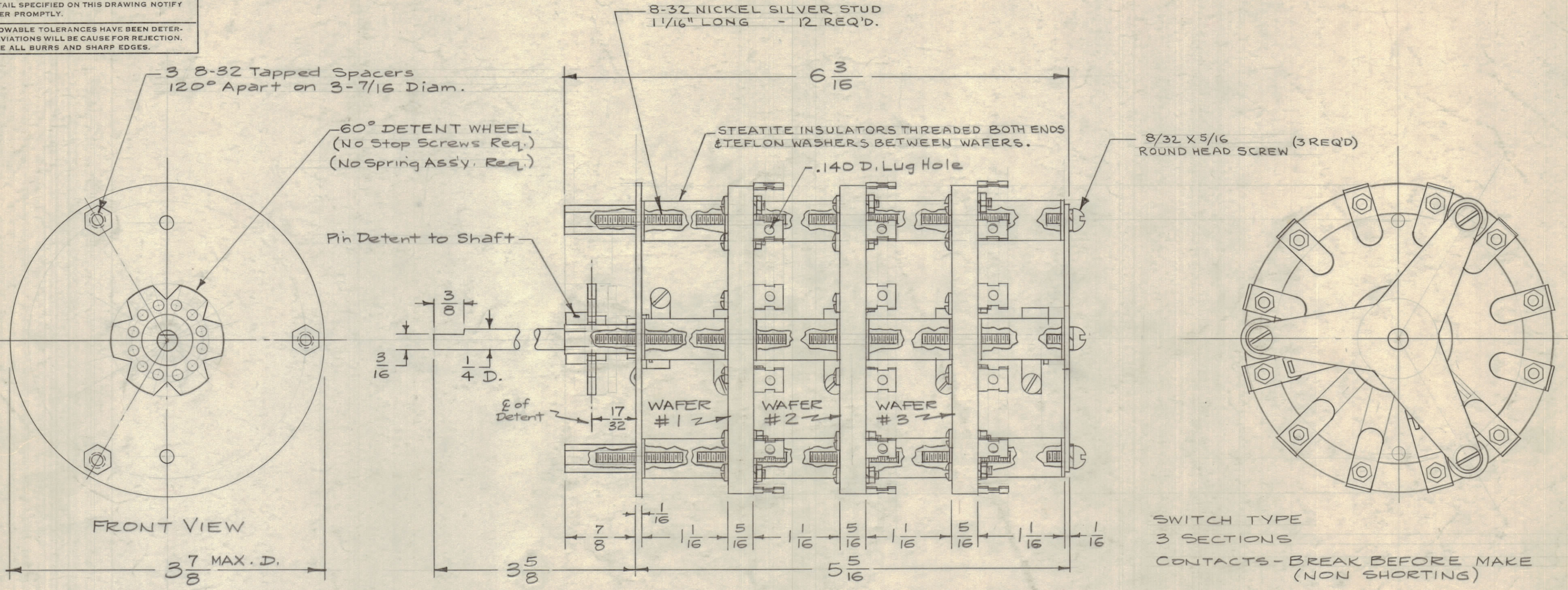


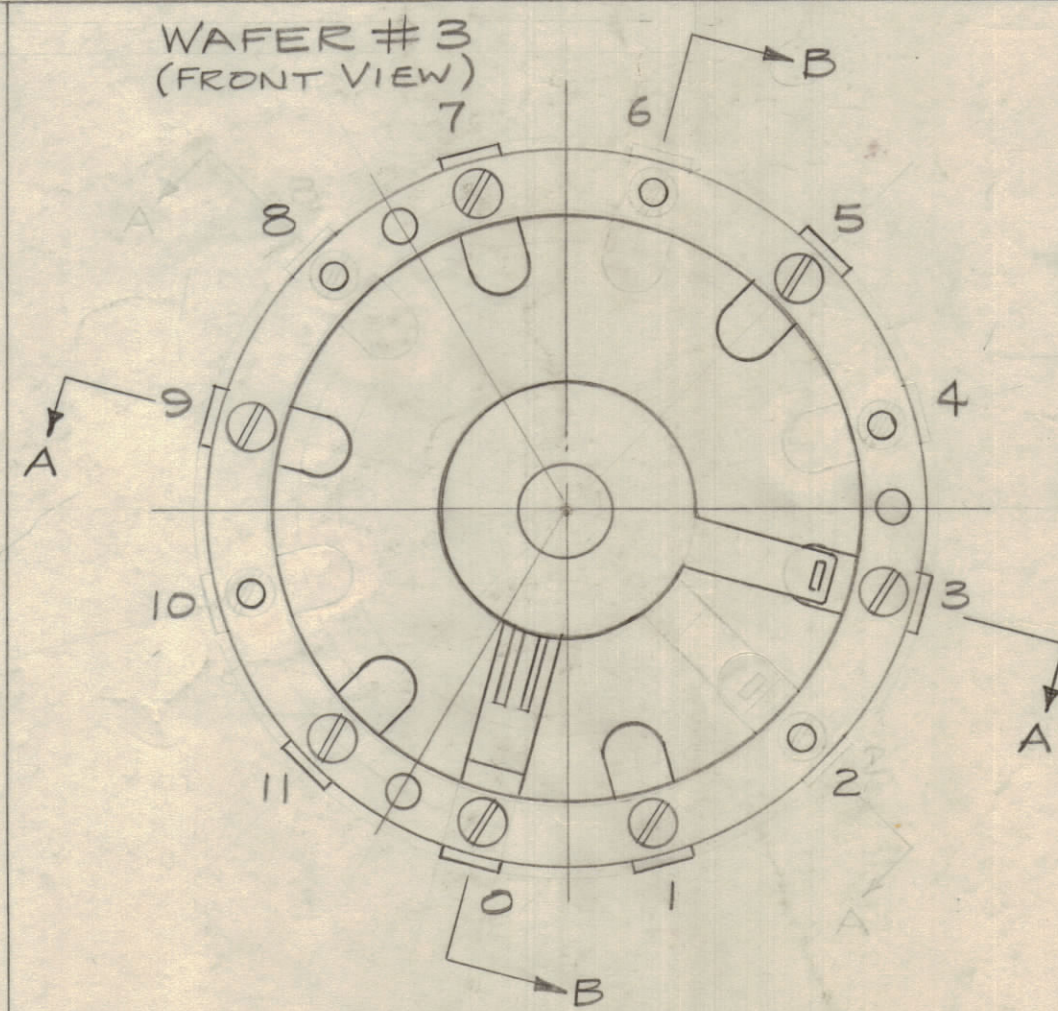
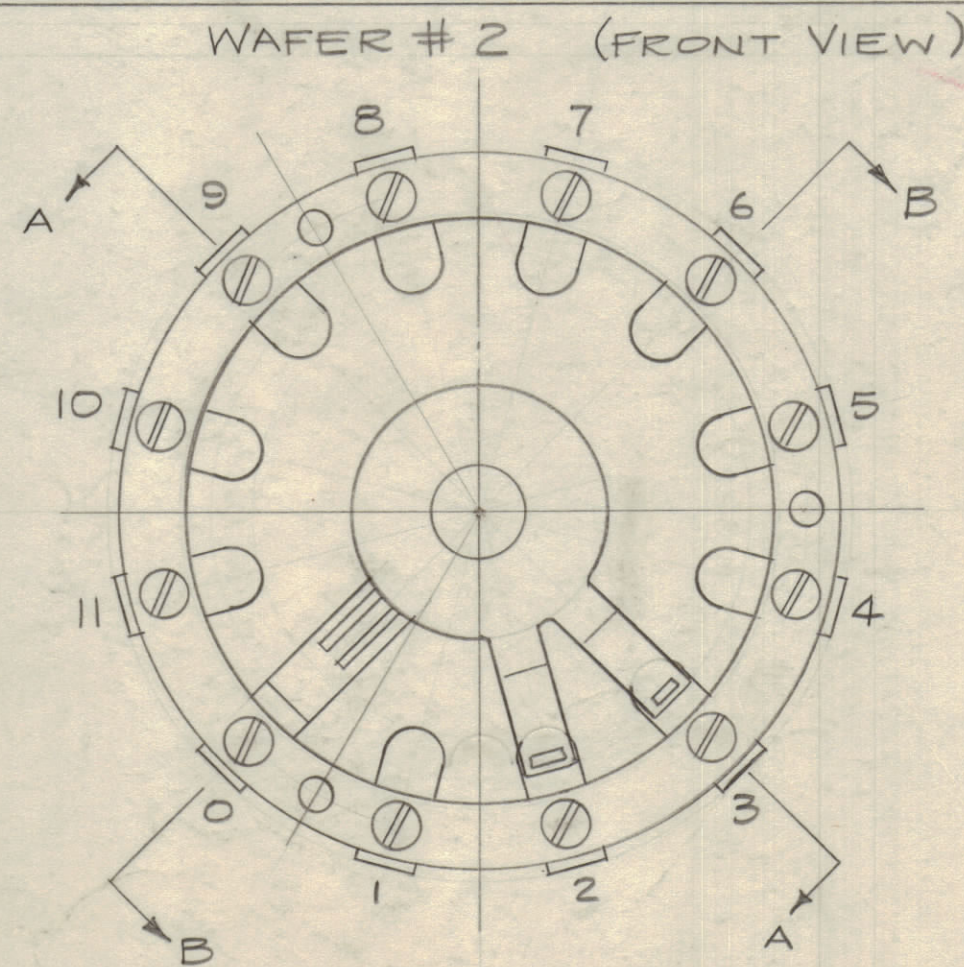
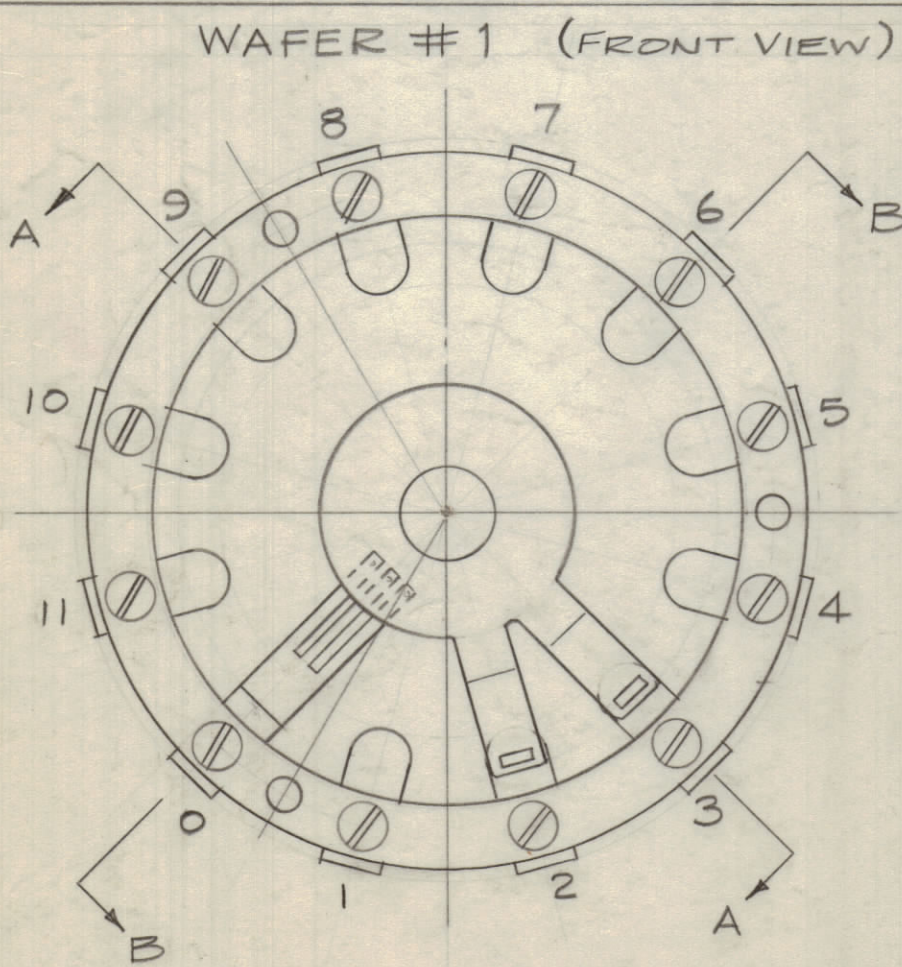
IF IT IS FOUND DESIRABLE TO CHANGE ANY TOLERANCE OR OTHER DETAIL SPECIFIED ON THIS DRAWING NOTIFY THE PURCHASER PROMPTLY.

MAXIMUM ALLOWABLE TOLERANCES HAVE BEEN DETERMINED AND DEVIATIONS WILL BE CAUSE FOR REJECTION. REMOVE ALL BURRS AND SHARP EDGES.



SWITCH TYPE
3 SECTIONS
CONTACTS - BREAK BEFORE MAKE
(NON SHORTING)

WAFERS SHOWN BELOW VIEWED BY LOOKING INTO SHAFT END (FRONT VIEW)

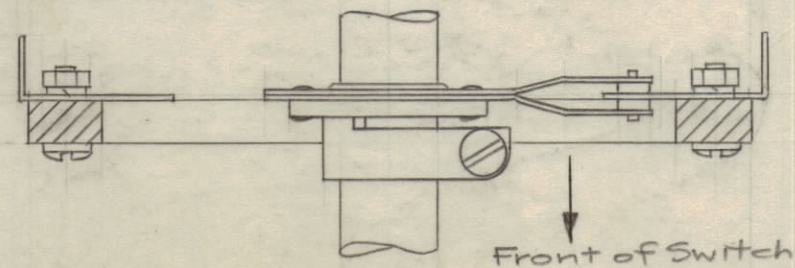


SW-259 D

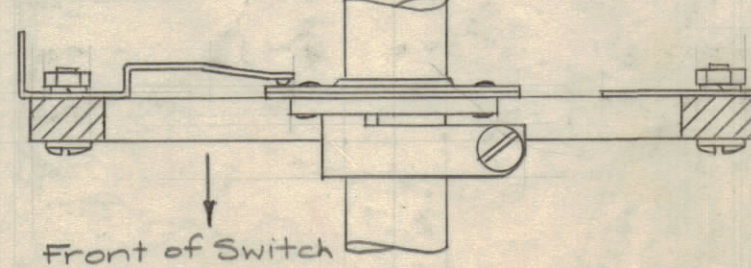
SPECS.
FLASHOVER - (at 60cps)
Contact to Contact - 12 KV pK(min)
To Ground - 20 KV(min)
30A. Max. Current Carrying CAP

MATERIALS
ROTOR SHAFT & WAFERS ARE SILICONE IMPREGNATED STEATITE.
WAFER SPACERS ARE GLAZED STEATITE.
FRONT 1/4 D. EXTENSION SHAFT - BRASS, NICKEL PLATE

SECTION A-A



SECTION B-B



D	1	ON WAFER #3: CONTACTS 2,4,6,8,10 DELE.	3/19/59	13623	RA	8/26/59	8/26/59
C	2	SCREW NOTE ADDED 12 STUDS & NOTE ADDED	8.5.64	12045	WLB	8/26/59	8/26/59
B	1	REDRAWN - DETENT MOVED - VIEWS CHGD. & CLARIFIED	9/30/59	1358	16	8/26/59	8/26/59
ISSUE	ITEM	CHANGED FROM	DATE	CH. NO.	DRAFTS	CHECKER	ENG. APP.

TOLERANCES		SCALE: 5-401-41 (STYLE 85 MOD.)
ALL OTHERS	DEC. DIM. ± FRAC. DIM. ± ANGULAR DIM. ±	DRILL, PUNCH, COMMERCIAL STOCK SIZES AND MANUFACTURERS TOLERANCES ARE NOT INCLUDED.

1	TU-2	AS-113	9-29-59
REQ. PER UNIT	MODEL	PROJECT NO.	ASSY. NO.
			DATE

REQ. ITEM	PART NO.	DESCRIPTION	SYMBOL
THE TECHNICAL MATERIEL CORP. MAMARONECK, NEW YORK			
SWITCH, ROTARY			
MATERIAL		WEIGHT PER PC.	
TYPE & TEMPER		DRAWN	
HEAT TREAT. SPEC.		ELEC. DES. APP.	
FINISH & SPEC. NO.		MECH. DES. APP.	
		FINAL APPROVAL	
		SW-259 D	