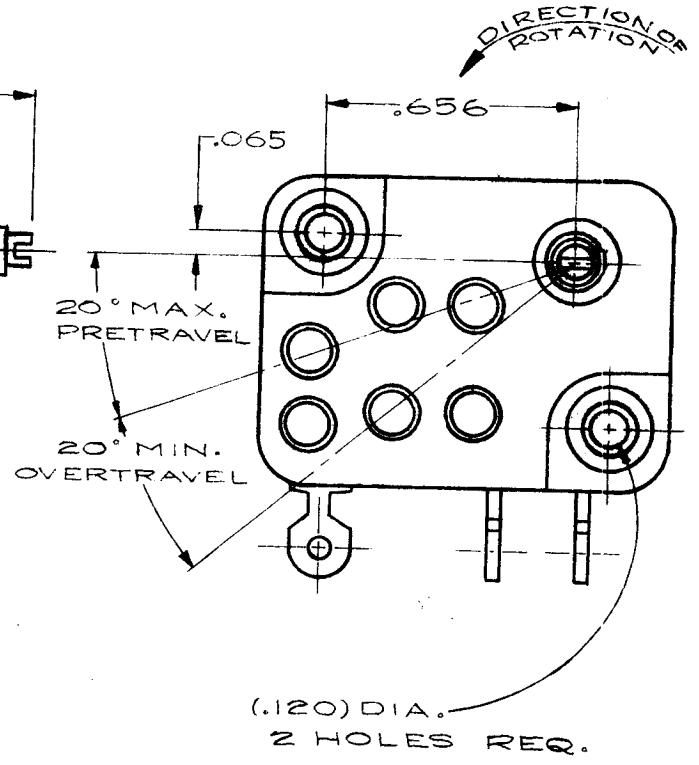
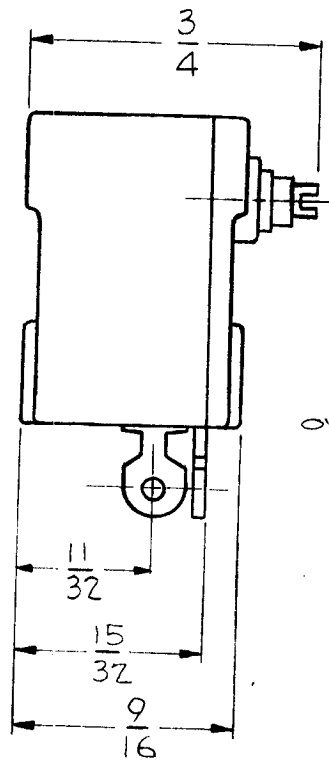
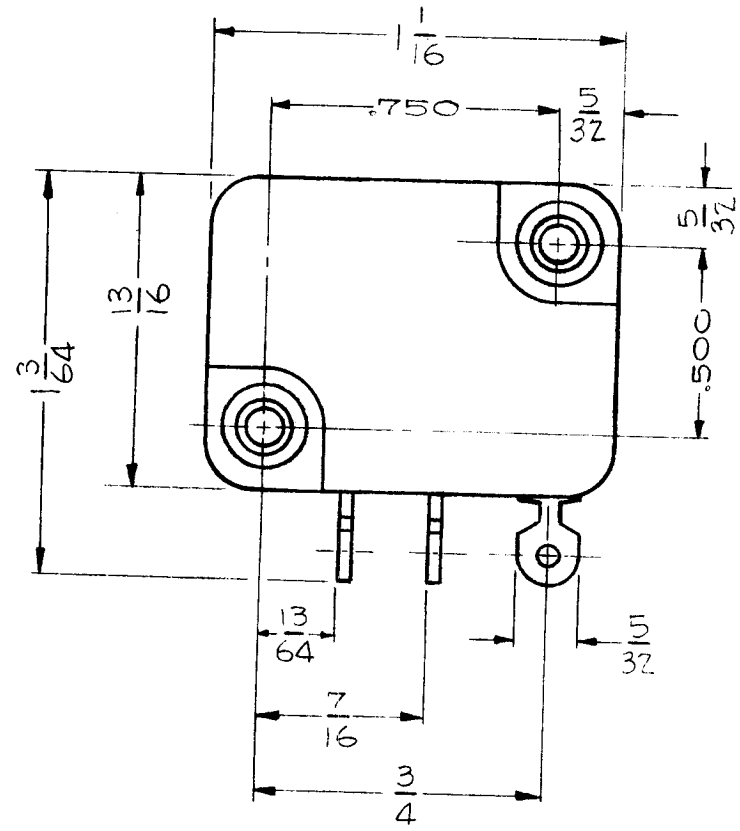


REQ. PER UNIT	USED ON			SW-252	B
	M DEL	ASS'Y. NO.	DATE		
1	RFB-1		1-9-59		



ELEC. SPEC.
5A 125 OR 250 VAC

ISSUE	ITEM	CHANGED FROM	DATE	CH. NO.	DRAFTS	CHECKER	ENG. APP.	REQ.	ITEM	PART NO.	DESCRIPTION	SYMBOL					
B	1	13/16 DIM. LINE CLARIFIED	12/7/59	1638	A.B.	J.C.					THE TECHNICAL MATERIEL CORP. MAMARONECK, NEW YORK						
A	1	ELEC. SPEC. ADDED	1/2/59	677		C.G.					MICRO SWITCH, LOW TORQUE						
TOLERANCES			SCALE: S-401-18 (V4-16)					J.C. BIELE		16		O.A.B.					
DEC. DIM. ± FRAC. DIM. ± ANGULAR DIM. ±			MAXIMUM ALLOWABLE TOLERANCES HAVE BEEN DETERMINED AND ANY DEVIATIONS WILL BE CAUSE FOR REJECTION. REMOVE ALL BURRS AND SHARP EDGES					TYPE & TEMPER		HEATTREAT. SPEC.		DRAWN		CHECKED		FINAL APPROVAL	
								FINISH & SPEC. NO.		ELEC. DES. APP		MECH. DES. APP		SW-252		B	