

IF IT IS FOUND DESIRABLE TO CHANGE ANY TOLERANCE OR OTHER DETAIL SPECIFIED ON THIS DRAWING NOTIFY THE PURCHASER PROMPTLY.

MAXIMUM ALLOWABLE TOLERANCES HAVE BEEN DETERMINED AND DEVIATIONS WILL BE CAUSE FOR REJECTION. REMOVE ALL BURRS AND SHARP EDGES.

NOTICE TO PERSONS RECEIVING THIS DRAWING

THE TECHNICAL MATERIEL CORPORATION claims proprietary right in the material disclosed hereon. This drawing is issued in confidence for engineering information only and may not be reproduced or used to manufacture anything shown hereon without permission from THE TECHNICAL MATERIEL CORPORATION to the user. This drawing is loaned for mutual assistance and is subject to recall at any time.

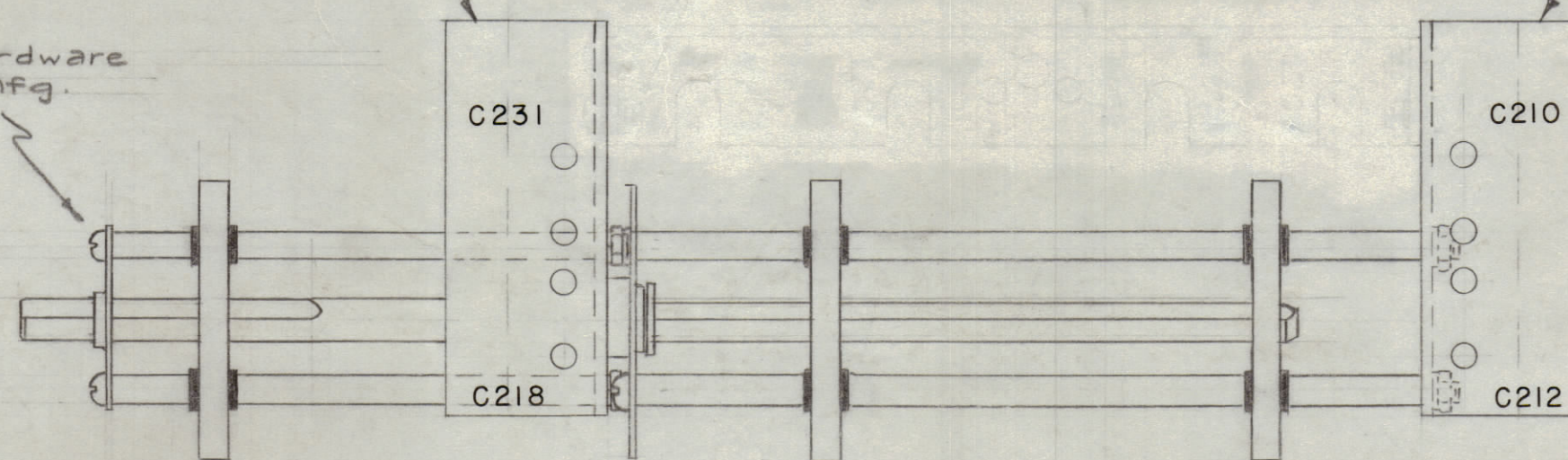
Property of:

THE TECHNICAL MATERIEL CORPORATION
MAMARONECK, NEW YORK

TMC PART NO. LD-469/MS1425
Supplied by TMC

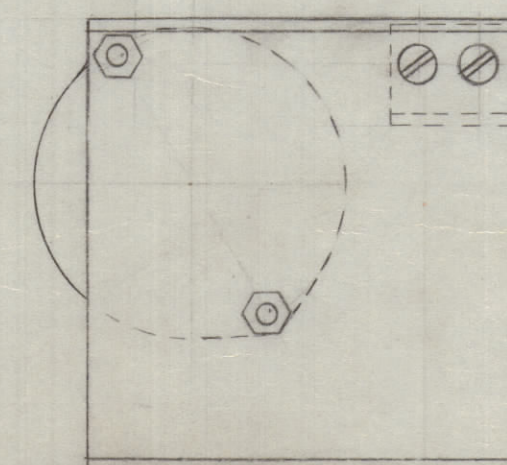
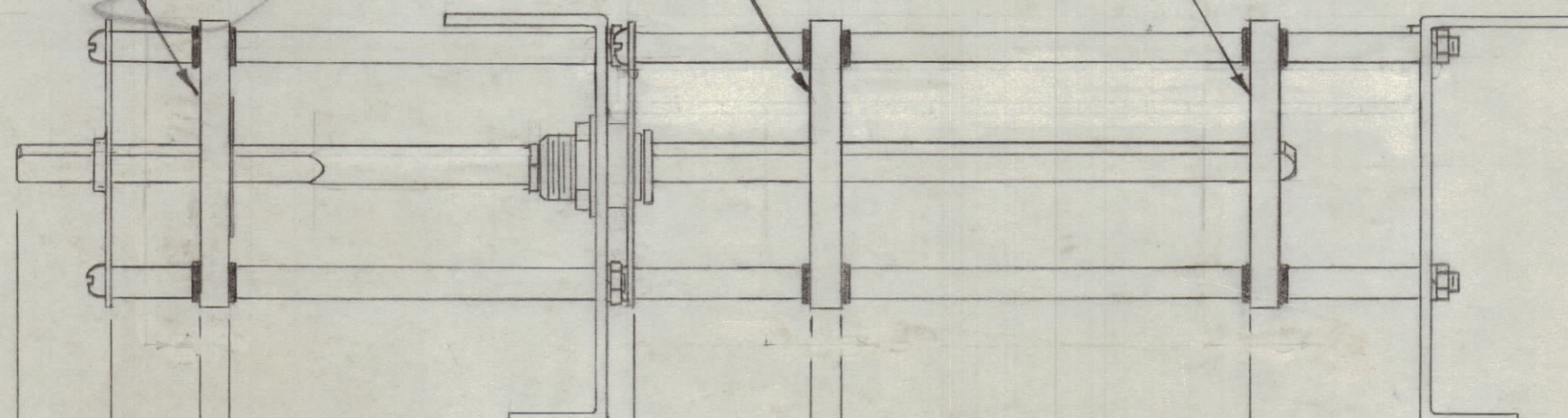
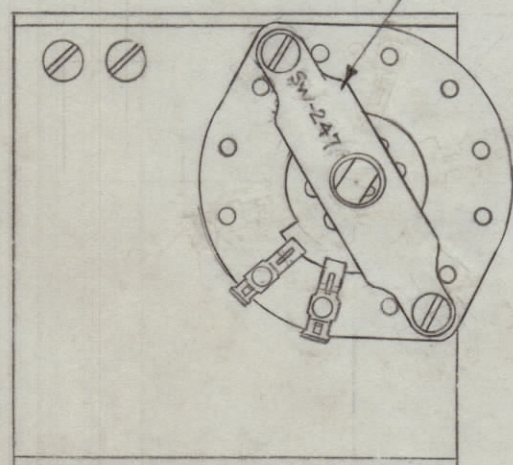
TMC PART NO. LD476/MS1418
Supplied by TMC

All Switch Hardware
Supplied by Mfg.



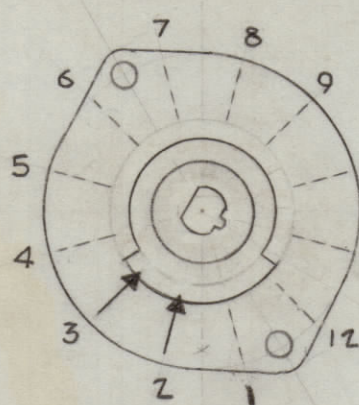
CONTACTS SHALL BE ON THIS SIDE OF WAFERS

Stamp Part No. Here

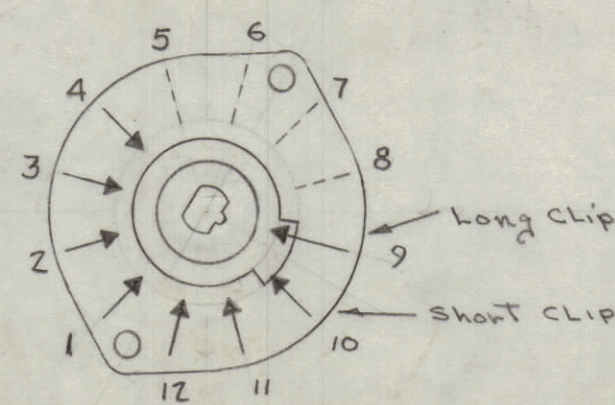


SW-247 C

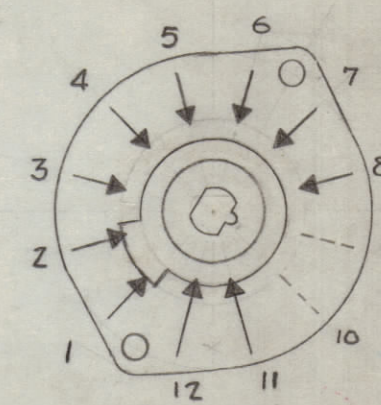
$\frac{1}{2}$ $2\frac{5}{32}$ $1\frac{1}{32}$ $2\frac{3}{8}$
 $3\frac{3}{8}$ SHAFT LENGTH $4\frac{23}{32}$



SECTION 1 FRONT



SECTION 2 FRONT



SECTION 3 FRONT

No. of Sections - 3
 No. of Positions - No Detent
 Part No. SW-247 (Stamp as shown)
 CONTACTS & ROTORS - Non-Shorting.
 Material - Silver Plated Brass
 Insulation - Ceramic
 Finish - Commercial
 Shaft Not removeable.
 NO Detent
 TYPE HC

The 3 sections are shown showing all details but are only electrical prescriptions showing contacts, rotors, etc.

C	DELE. BRACKET	5/19/72	20725	GE	EP	EP	
B	MS1425, 1419 & 1418 ADDED APPROPRIATE LD NO'S	1/14/66	17231	WHO	OPF	OPF	
A	STAMPING L203 & L204 REVISION	9/17/60	5446	RU	RU	SM	
ISSUE	ITEM	CHANGED FROM	DATE	CH. NO.	DRAFTS	CHECKER	ENG. APP.
TOLERANCES			SCALE:				
ALL OTHERS	DEC. DIM. ± FRAC. DIM. ± ANGULAR DIM. ±	DRILL, PUNCH, COMMERCIAL STOCK SIZES AND MANUFACTURERS TOLERANCES ARE NOT INCLUDED.					

1	RTF-2 MULT.			12-11-58
REQ. PER UNIT	MODEL	PROJECT NO.	ASSY. NO.	DATE
USED ON				

REQ. ITEM	PART NO.	DESCRIPTION	SYMBOL
THE TECHNICAL MATERIEL CORP. MAMARONECK, NEW YORK			
STOCK SIZE			
BANDSWITCH, MULTIPLIER			
MATERIAL WEIGHT PER C.			
FINISH (RTF-2 MULT.)			
TYPE & TEMPER		DRAWN	MECH. DES. APP.
HEAT TREAT. SPEC.		CHECKED	FINAL APPROVAL
FINISH & SPEC. NO.		5401-13	SW-247 C