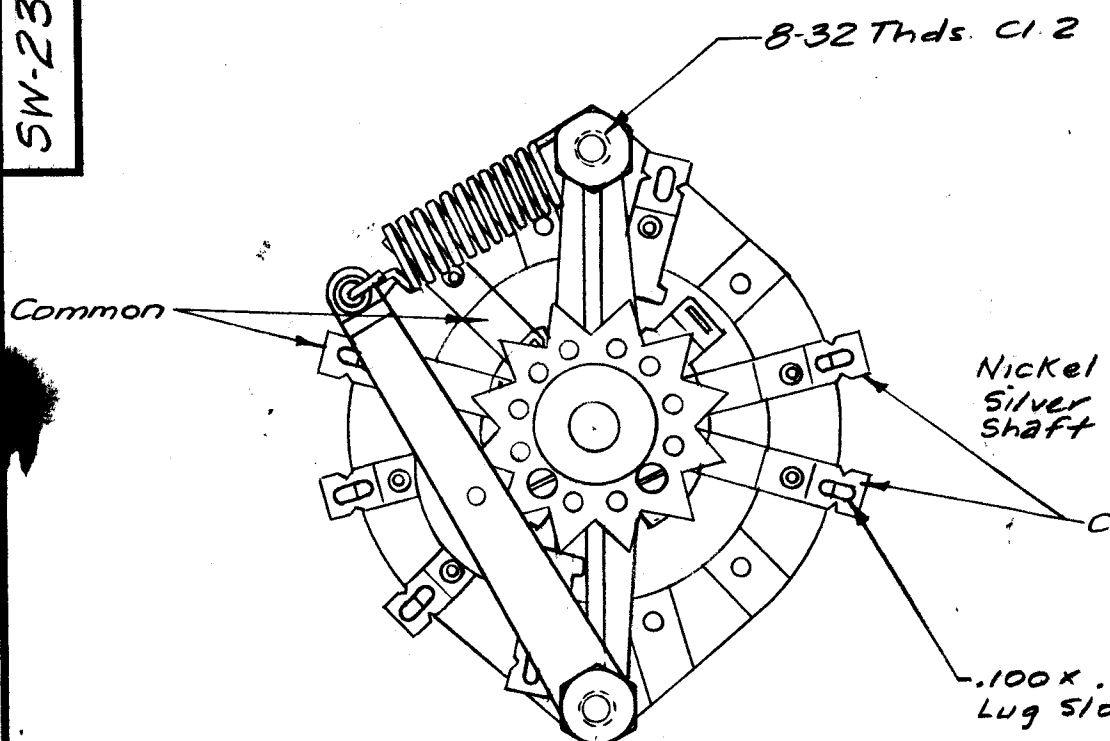
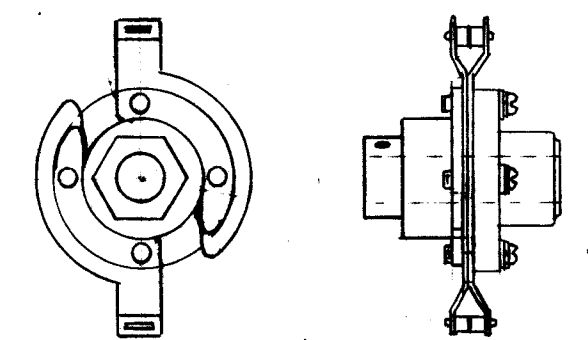


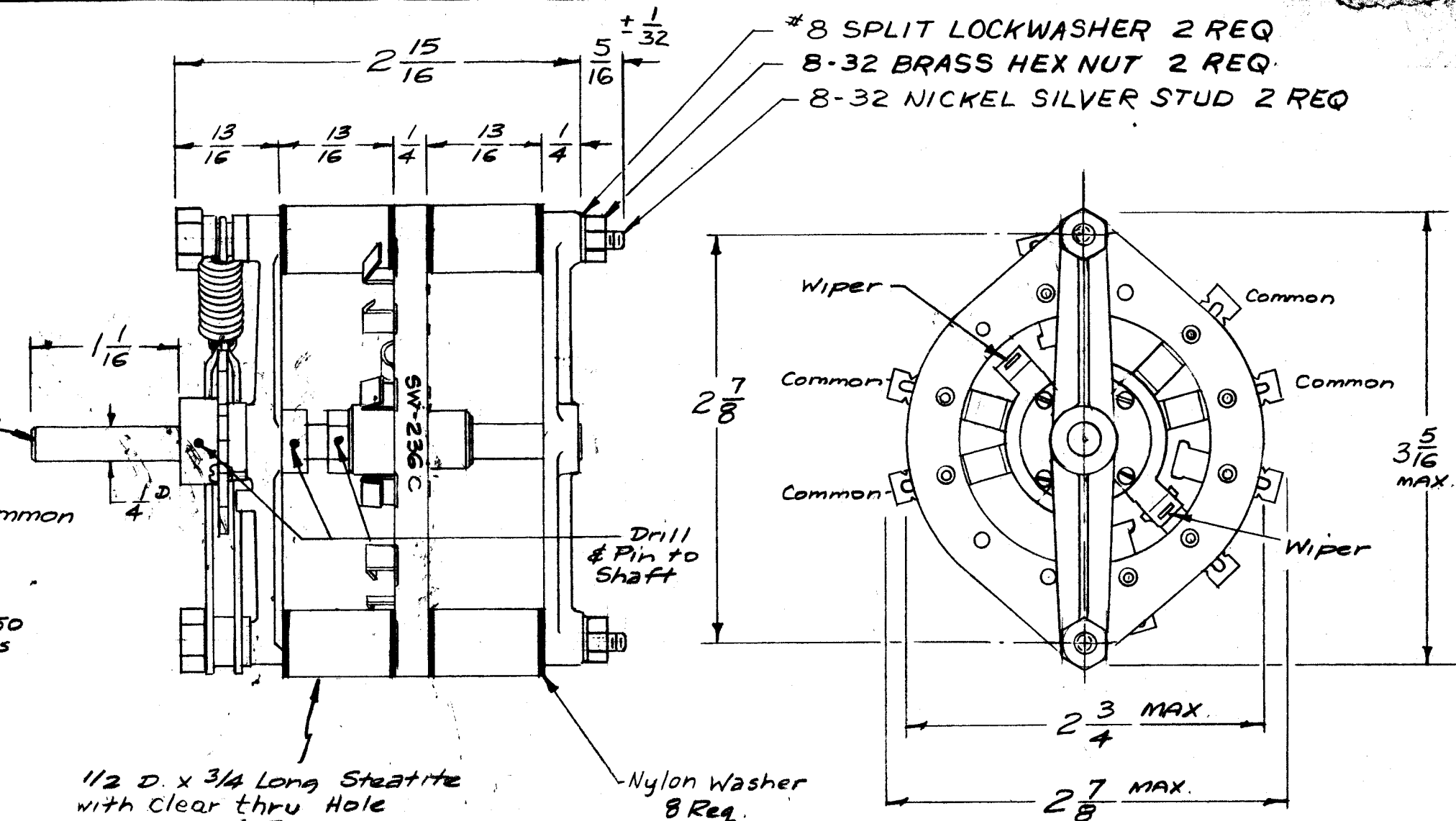
C
SW-236



Two Stop-Screws Req., Positioned as shown on 30° Detent Wheel.



ROTOR DETAIL



Note: Stamp Side of Wafer with TMC Part No.

contacts - Make Before Break

ONE SECTION - 3 POSITION - 2 POLE

ISSUE	ITEM	CHANGED FROM	DATE	CH. NO.	DRAFTS	CHECKER	ENG. APP.
C		ADDED HEX NUTS AND STUDS.	5/26/66	16288	C.H.	[Signature]	[Signature]
B	1	Detent Portion Changed	8-12-60	2749	J.C.B.	[Signature]	[Signature]
A	2	Rotor Detail Chg'd	1/24/58	542	16	ATB	AMB
	1	Bushing was in Rear					

TOLERANCES SCALE: 5401-113 (MODEL 86 MOD.)

DEC. DIM. ±
C. DIM. ± 1/64
ANGULAR DIM. ±

MAXIMUM ALLOWABLE TOLERANCES HAVE BEEN DETERMINED AND ANY DEVIATIONS WILL BE CAUSE FOR REJECTION. REMOVE ALL BURRS AND SHARP EDGES

REQ. PER UNIT	MODEL	PROJECT NO.	ASS'Y. NO.	DATE
1	CRFD-1	685-2		11/14/58
				USED ON

REQ. ITEM	PART NO.	DESCRIPTION	SYMBOL
THE TECHNICAL MATERIEL CORP. MAMARONECK, NEW YORK			
SWITCH, ROTARY, LOADING			
MATERIAL		16 1/4 / 58	[Signature]
TYPE & TEMPER	HEAT TREAT. SPEC.	DRAWN	CHECKED
		ATB	
FINISH & SPEC. NO.		ELEC. DES. APP.	MECH. DES. APP.
			SW-236 C