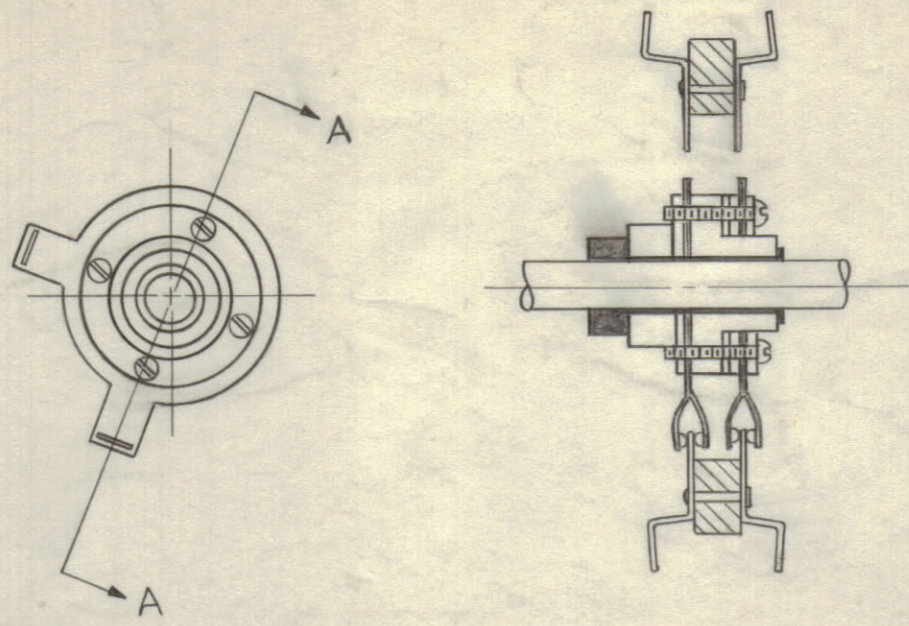


IF IT IS FOUND DESIRABLE TO CHANGE ANY TOLERANCE OR OTHER DETAIL SPECIFIED ON THIS DRAWING NOTIFY THE PURCHASER PROMPTLY.

MAXIMUM ALLOWABLE TOLERANCES HAVE BEEN DETERMINED AND DEVIATIONS WILL BE CAUSE FOR REJECTION. REMOVE ALL BURRS AND SHARP EDGES.



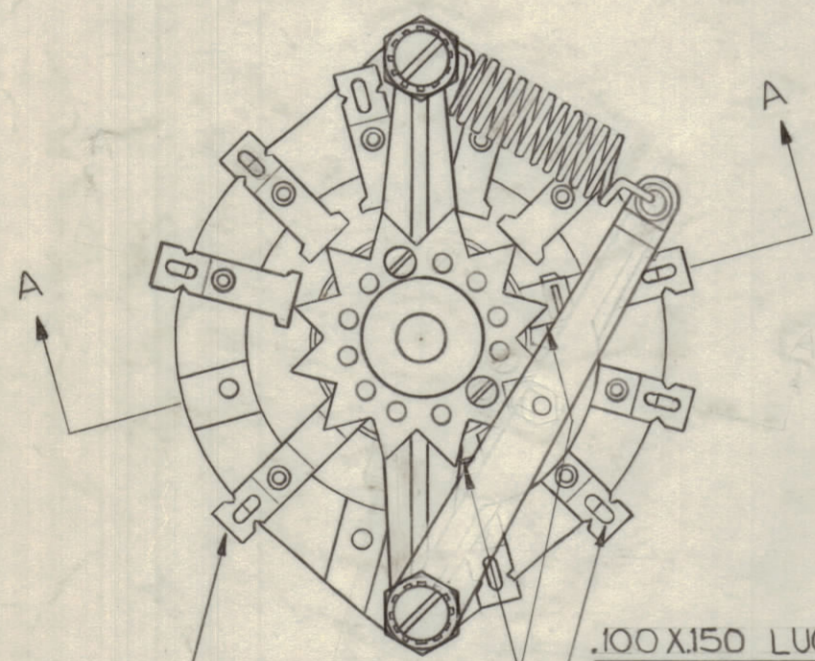
SECTION A-A

NOTES ~

- 1~ALL CONTACTS INCLUDING THE COMMON ONE WILL BE DOUBLE TYPE (ONE ON EACH SIDE OF WAFER) AS SHOWN.
- 2~STAMP WAFER WITH TMC PART NO. AS SHOWN.
- 3~ALL CONTACTS ~ MAKE BEFORE BREAK.
- 4~ 30° DETENT WHEEL HAS SIX POSITIONS.

TWO STOP SCREWS REQ'D. POSITIONED AS SHOWN ON 30° DETENT WHEEL.

SHAFT TO BE FLUSH WITH END OF BUSHING.

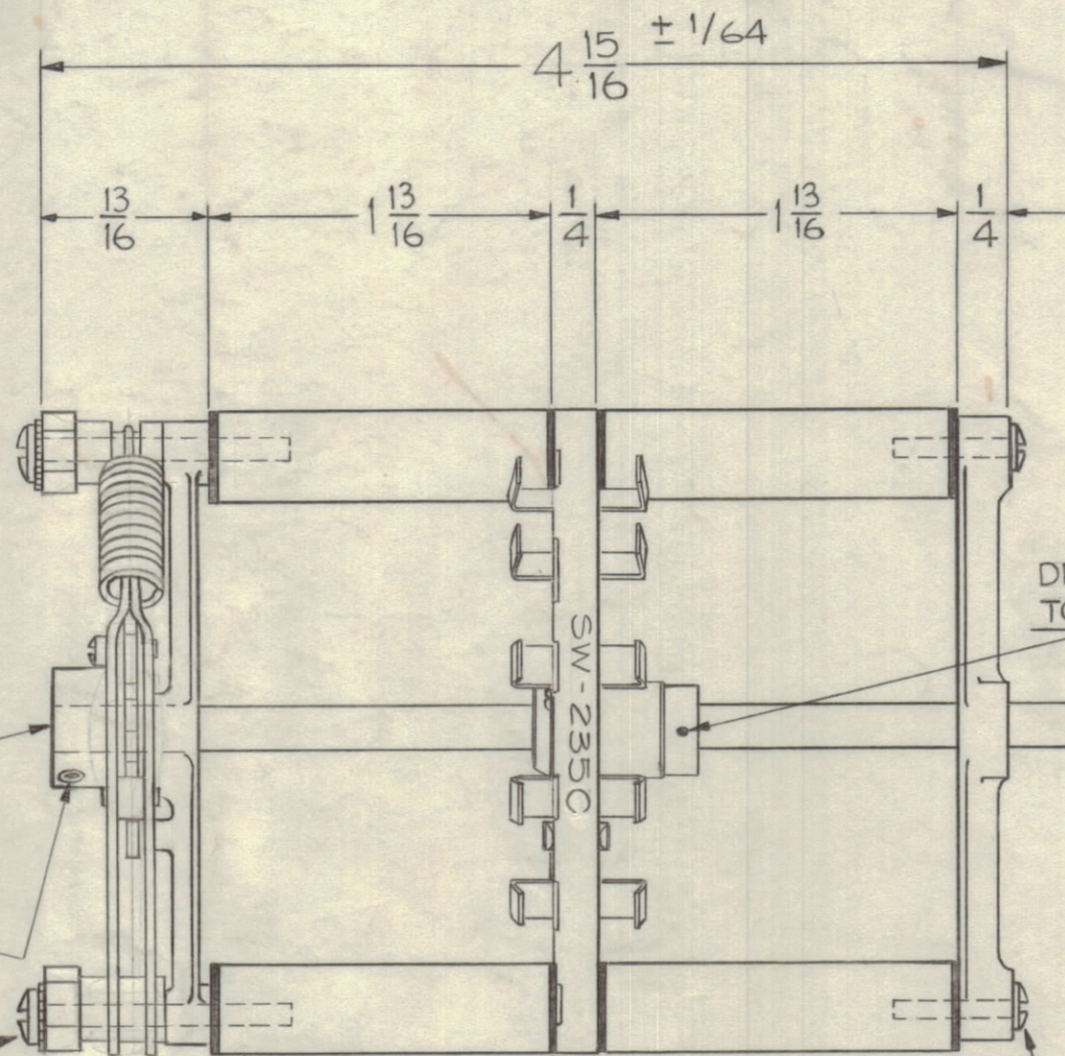


.100 X .150 LUG HOLES

WIPERS

COMMON CONTACT

6-32 SET SCREW 2-REQ'D



DRILL & PIN TO SHAFT

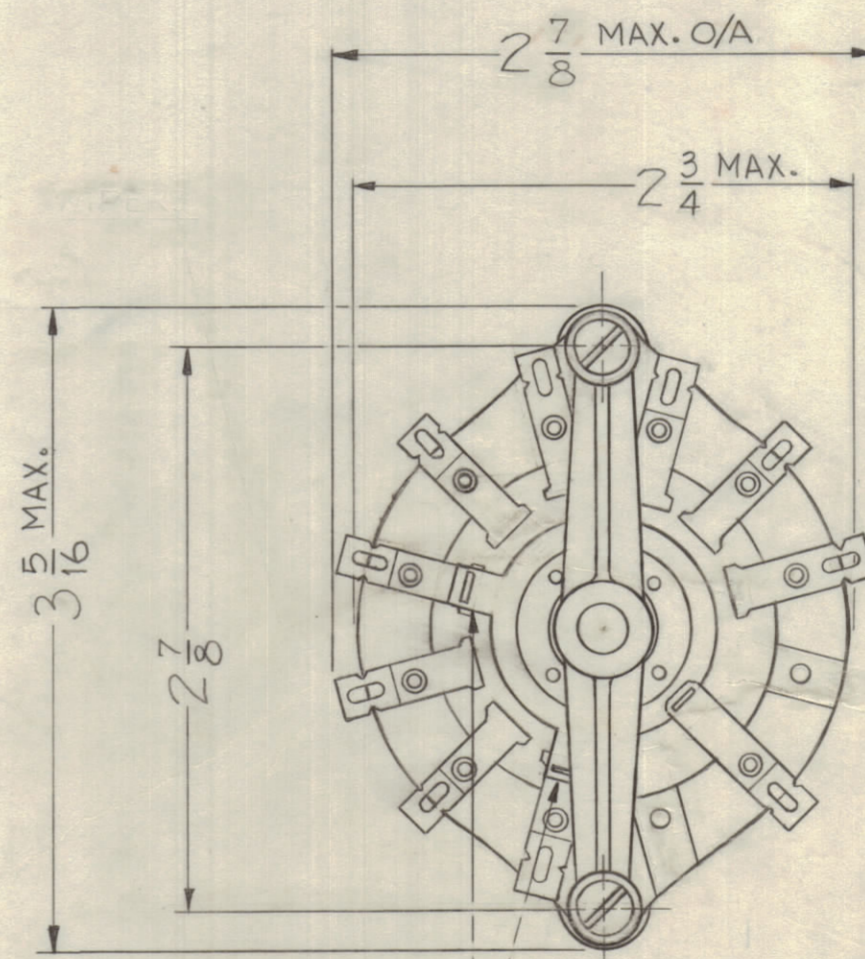
NICKEL SILVER SHAFT

1/2 DIA STEATITE INSULATORS

NYLON WASHER 8 REQ'D.

SCBS0832BC10 2 REQ'D.

DETENT SECTION WILL HAVE AN 8-32 CLEARANCE HOLE DRILLED THRU. (2) 8-32 X 1-1/4 LG. SCREWS & (2) NO. 8 LOCKWASHERS. SUPPLIED BY MANUFACTURER.



WIPERS

SW-235 C

|   |   |  |          |      |        |            |     |
|---|---|--|----------|------|--------|------------|-----|
| C | 1 | Detent Portion Changed                     | 8/12/60  | 2749 | J.C.B. | <i>JCB</i> |     |
| B | 1 | completely revised and redrawn             | 4/7/59   |      | J.C.B. | <i>JCB</i> | ATB |
| A | 1 | complete mech. revision electrically same. | 11/24/58 | 542  |        |            | ATB |

| ISSUE                          | ITEM | CHANGED FROM   | DATE | CH. NO.   | DRAFTS | CHECKER | ENG. APP. |
|--------------------------------|------|----------------|------|---|--------|---------|-----------|
| TOLERANCES                     |      |                |      |   |        |         |           |
| SCALE: S401-113 (MODEL 86 MOD) |      |                |      |   |        |         |           |
| ALL OTHERS                     |      | DEC. DIM. ±    |      | DRILL, PUNCH, COMMERCIAL STOCK SIZES AND MANUFACTURERS TOLL ANCES ARE NOT INCLUDED. |        |         |           |
|                                |      | FRAC. DIM. ±   |      |   |        |         |           |
|                                |      | ANGULAR DIM. ± |      |   |        |         |           |

| 1             | CRFB-1 |             |           | 4-7-59 |
|---------------|--------|-------------|-----------|--------|
| REQ. PER UNIT | MODEL  | PROJECT NO. | ASSY. NO. | DATE   |
|               |        |             |           |        |

| REQ. ITEM  | PART NO. | DESCRIPTION   | SYMBOL         |
|--|----------|---------------|----------------|
| THE TECHNICAL MATERIEL CORP.<br>MAMARONECK, NEW YORK |          |               |                |
| STOCK SIZE   |          |               |                |
| SWITCH, ROTARY                                       |          |               |                |
| MATERIAL   |          |               |                |
| WEIGHT PER PC.                                       |          |               |                |
| IPA BAND   |          |               |                |
| TYPE & TEMPER  |          | JOHN C. BIELE |                |
| DRAWN  |          | <i>file</i>   |                |
| HEAT TREAT. SPEC.                                    |          | <i>ohb</i>    |                |
| FINISH & SPEC. NO.                                   |          | CHECKED       | FINAL APPROVAL |
|  |          |               | SW-235 C       |