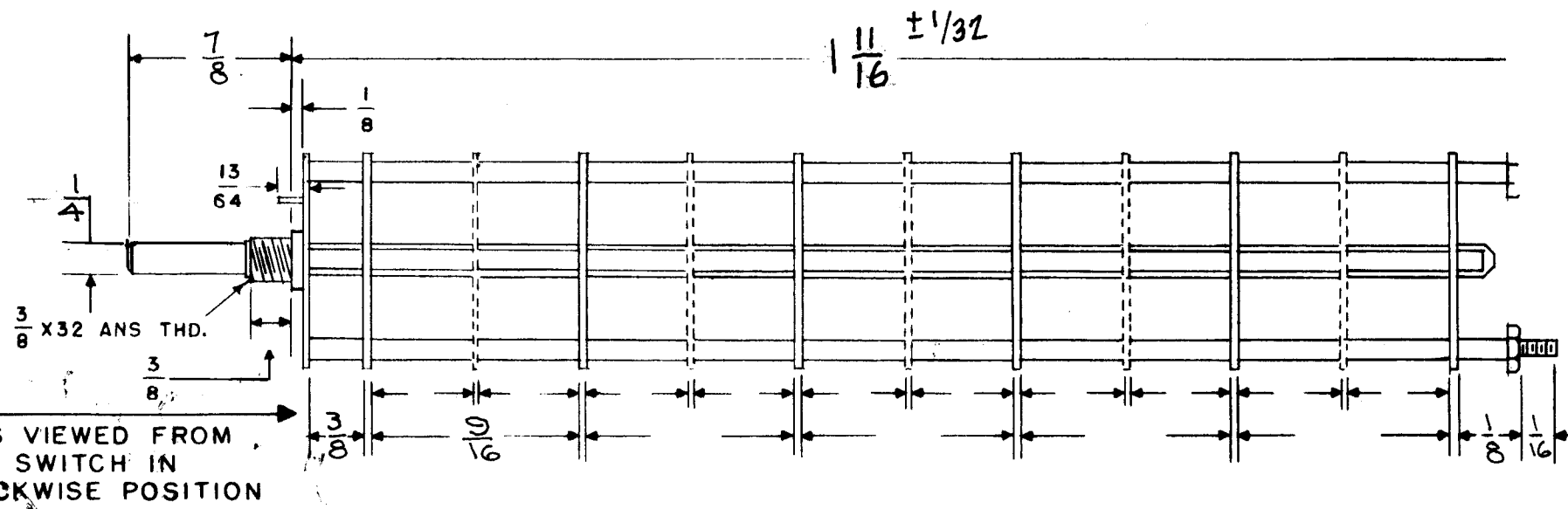
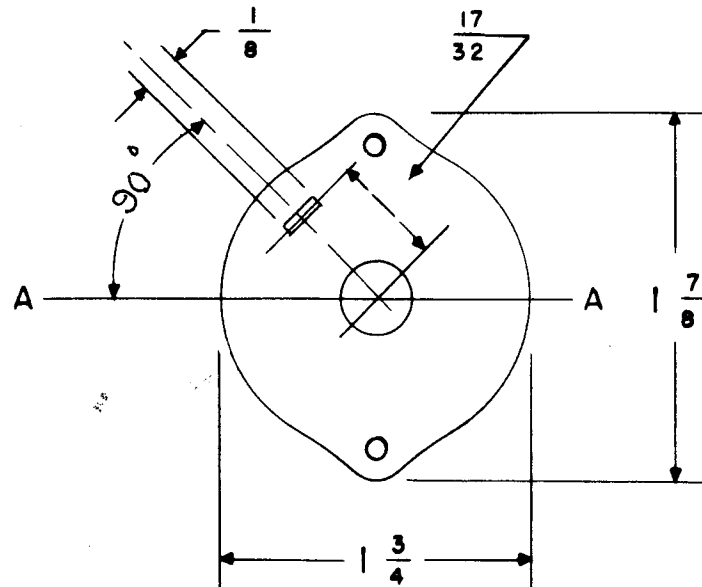


SW-232 A



FRONT & REAR SECTIONS VIEWED FROM FRONT OR KNOB END OF SWITCH IN EXTREME COUNTER CLOCKWISE POSITION

DRAW IN FLAT ON ABOVE SHAFT IN EXTREME COUNTER CLOCKWISE POSITION AND SHOW ANGLE IN REFERENCE TO LINE A-A

NUMBER OF SECTIONS 2  
 NUMBER OF POSITIONS 5  
 ANGLE OF THROW 60° ( 60°)

PART NUMBER SW-232-A  
 STAMP ON FRONT PLATE YES  NO

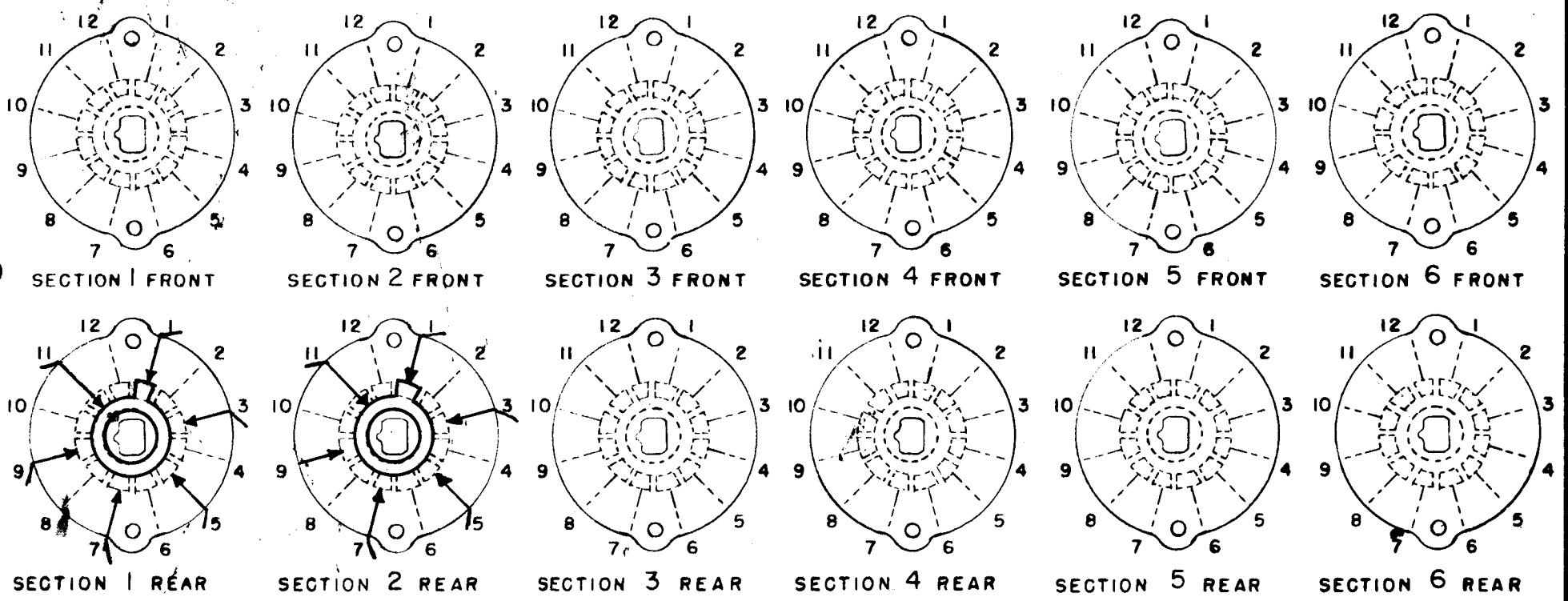
CONTACTS & ROTORS: (IF NOT SPECIFIED, SHORTING TYPE WILL BE SUPPLIED)  
 SHORTING  NON SHORTING

MATERIAL: (IF NOT SPECIFIED, SILVER PLATED BRASS WILL BE SUPPLIED)  
 SILVER PLATED BRASS  SILVER ALLOY

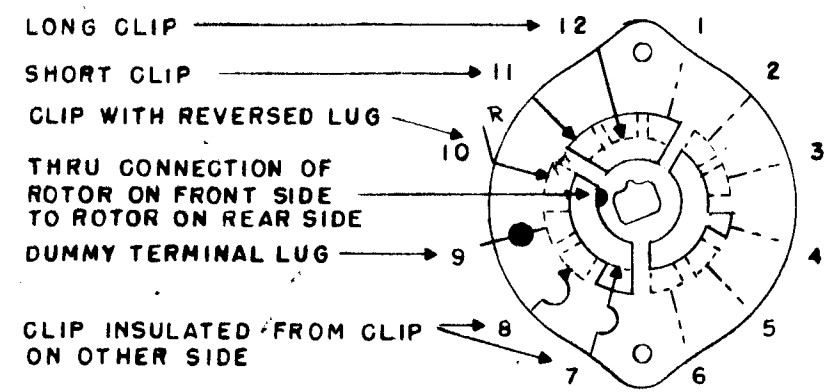
INSULATION: BAKELITE  CERAMIC   
 SPECIFY IMPREGNATION IF REQUIRED \_\_\_\_\_

FINISH REQUIREMENTS: COMMERCIAL  ARMY  NAVY   
 SALT TEST (IF ANY GIVE DETAILS) \_\_\_\_\_

HARDWARE: SUPPLY  
1 3/8-32 NUTS  ACROSSFLATS MAT. Brass PLATING Nickel  
1 3/8 INT TOOTH LOCKWASHERS MAT. Bronze PLATING Nickel



SYMBOLS USED IN MARKING PRINT →



OUTLINE ROTOR BLADES AS SHOWN ABOVE WITH SWITCH IN EXTREME COUNTER-CLOCKWISE POSITION

OAK SWITCH  
 TYPE - H  HC  DH  DHC  QH  
 QDH  QHC  QDHC  
 (CIRCLE DESIRED TYPE)

A	1	1 11/16 DIM. WAS 1 21/32	11-14-58	J.C.B.	<i>[Signature]</i>	<i>[Signature]</i>			

TOLERANCES		SCALE:	
DEC. DIM. ±		MAXIMUM ALLOWABLE TOLERANCES HAVE BEEN DETERMINED AND ANY DEVIATIONS WILL BE CAUSE FOR REJECTION. REMOVE ALL BURRS AND SHARP EDGES	
FRAC. DIM. ±			
ANGULAR DIM. ±			

1	RTF-2	MULTI.	10-7-58
REQ. PER UNIT	MODEL	PROJECT NO.	ASS'Y. NO.
			DATE

REQ. ITEM	PART NO.	DESCRIPTION	SYMBOL
		THE TECHNICAL MATERIEL CORP. MAMARONECK, NEW YORK	
STOCK SIZE		SWITCH, METER	
MATERIAL		60° DETENT	
TYPE & TEMPER	HEAT TREAT. SPEC.	DRAWN <i>[Signature]</i>	CHECKED <i>[Signature]</i>
FINISH & SPEC. NO.		ELEC. DES. APP. <i>[Signature]</i>	MECH. DES. APP. <i>[Signature]</i>
		SW-232	A