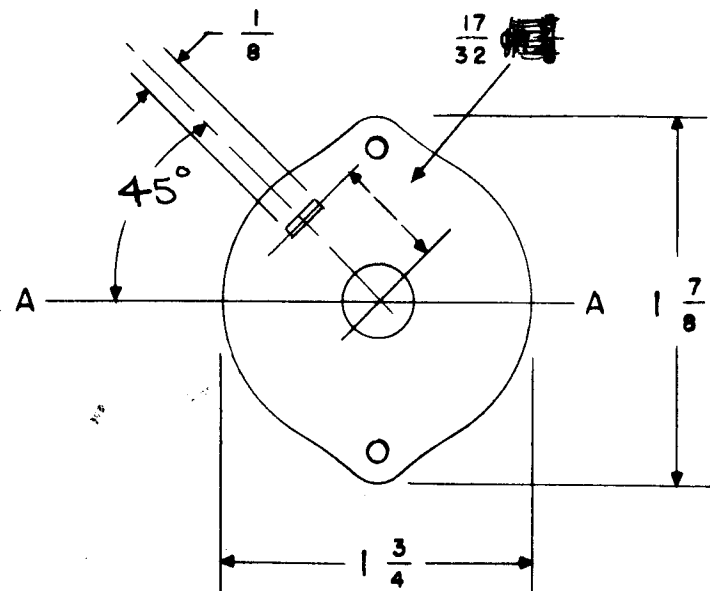
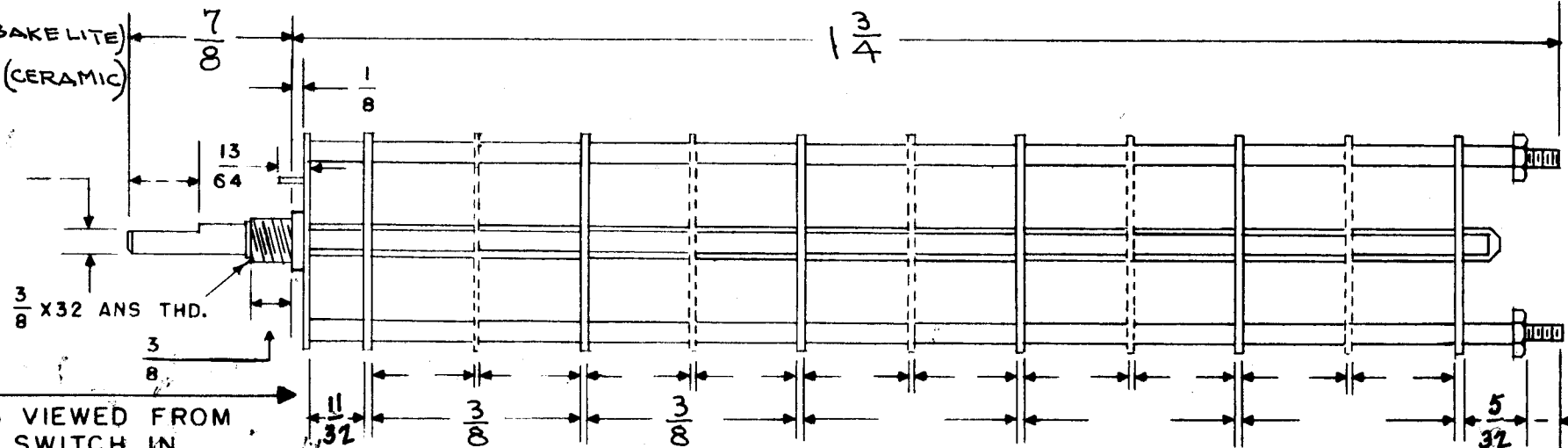


B
SW-228



DETENT : 60°
 WAFER 1 + 2 "H" TYPE (BAKELITE)
 WAFER 3 "HC" TYPE (CERAMIC)



FRONT & REAR SECTIONS VIEWED FROM FRONT OR KNOB END OF SWITCH IN EXTREME COUNTER CLOCKWISE POSITION

DRAW IN FLAT ON ABOVE SHAFT IN EXTREME COUNTER CLOCKWISE POSITION AND SHOW ANGLE IN REFERENCE TO LINE A-A

NUMBER OF SECTIONS 3
 NUMBER OF POSITIONS 4
 ANGLE OF THROW 60° (~~20°~~ 60°)

PART NUMBER SW-228-B

STAMP ON FRONT PLATE YES NO

CONTACTS & ROTORS: (IF NOT SPECIFIED, SHORTING TYPE WILL BE SUPPLIED)
 SHORTING NON SHORTING

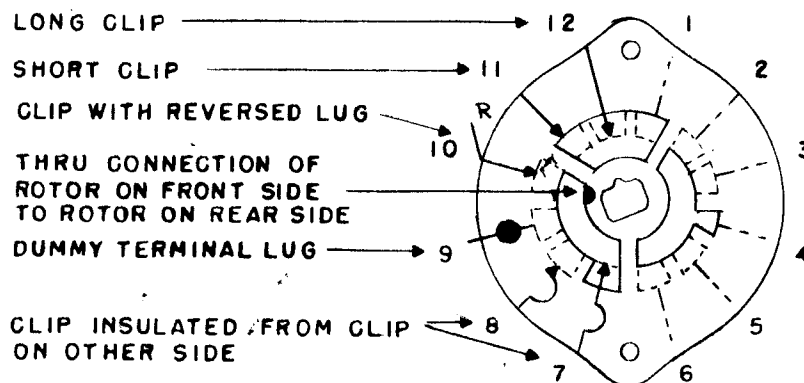
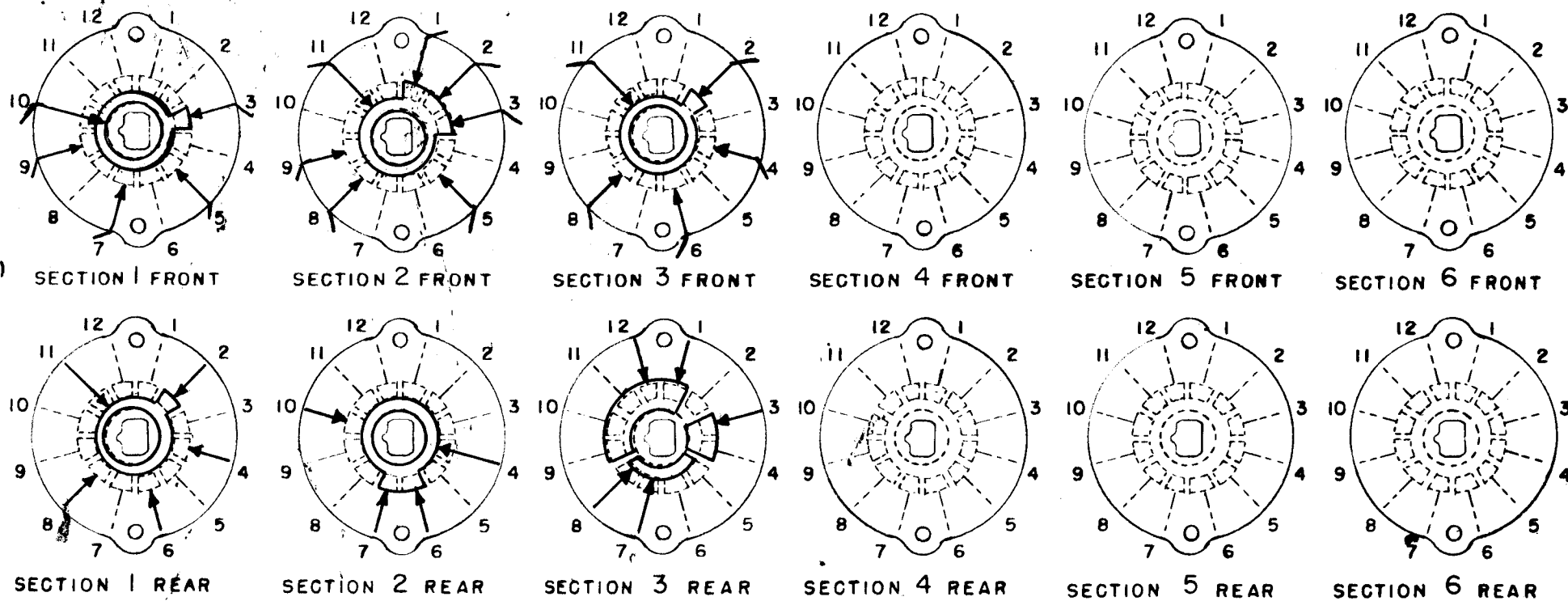
MATERIAL: (IF NOT SPECIFIED, SILVER PLATED BRASS WILL BE SUPPLIED)
 SILVER PLATED BRASS SILVER ALLOY

INSULATION: BAKELITE CERAMIC
 SPECIFY IMPREGNATION IF REQUIRED _____

FINISH REQUIREMENTS: COMMERCIAL ARMY NAVY
 SALT TEST (IF ANY GIVE DETAILS) _____

HARDWARE: SUPPLY

3/8-32 NUTS ACROS FLATS MAT. _____ PLATING _____
 3/8 INT TOOTH LOCKWASHERS MAT. _____ PLATING _____



OUTLINE ROTOR BLADES AS SHOWN ABOVE WITH SWITCH IN EXTREME COUNTER-CLOCKWISE POSITION

OAK SWITCH

TYPE - H HC DH DHC QH
 QDH QHC QDHC
 (CIRCLE-DESIRED TYPE)

SYMBOLS USED IN MARKING PRINT

ISSUE	ITEM	CHANGED FROM	DATE	CH. NO.	DRAFTS	CHECKER	ENG. APP.
B	1	11/82 DIM WAS 2/16 5/32 " " 1/8	11-14-58			J.C.B.	<i>[Signature]</i>
A	1	short clip Added To sect 2 Rear, Pos. 10	10/2/58	486		<i>[Signature]</i>	<i>[Signature]</i>

TOLERANCES		SCALE:
DEC. DIM. ±		MAXIMUM ALLOWABLE TOLERANCES HAVE BEEN DETERMINED AND ANY DEVIATIONS WILL BE CAUSE FOR REJECTION. REMOVE ALL BURRS AND SHARP EDGES
FRAC. DIM. ±		
ANGULAR DIM. ±		

REQ. PER UNIT	MODEL	PROJECT NO.	ASS'Y. NO.	DATE
1	RTP-2			9-22-58

REQ. ITEM	PART NO.	DESCRIPTION	SYMBOL
		THE TECHNICAL MATERIEL CORP. MAMARONECK, NEW YORK	
		MODE, SWITCH	
		MATERIAL	
		TYPE & TEMPER HEAT TREAT. SPEC.	
		DRAWN	9/27/58
		CHECKED	A.J.J.
		FINISH & SPEC. NO.	
		ELEC. DES. APP.	
		MECH. DES. APP.	
		SW-228	B