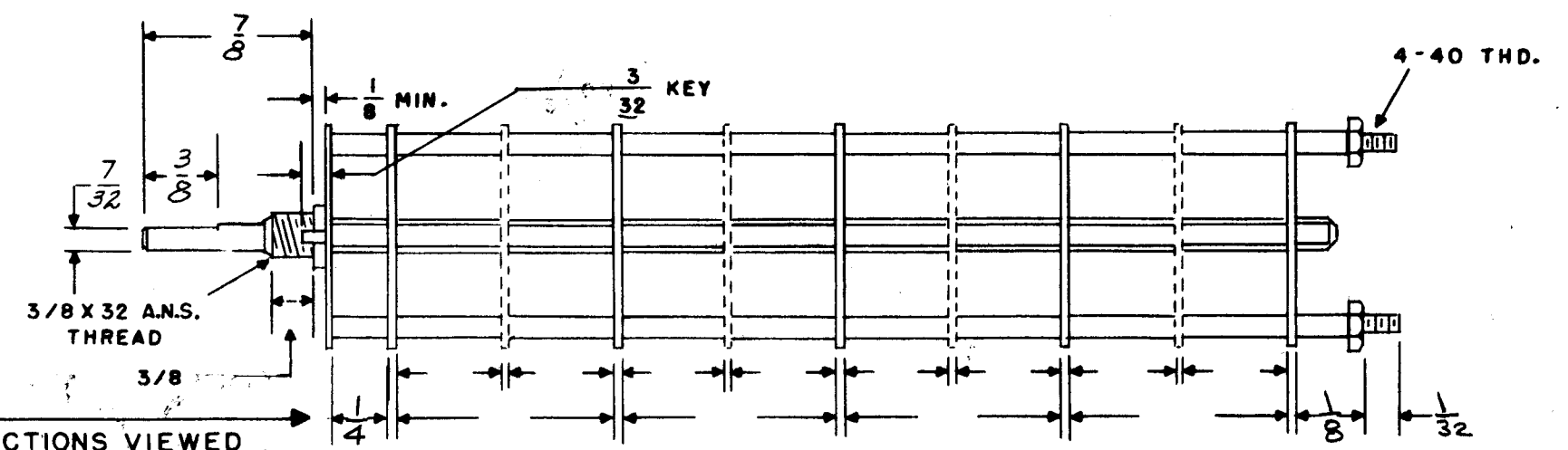
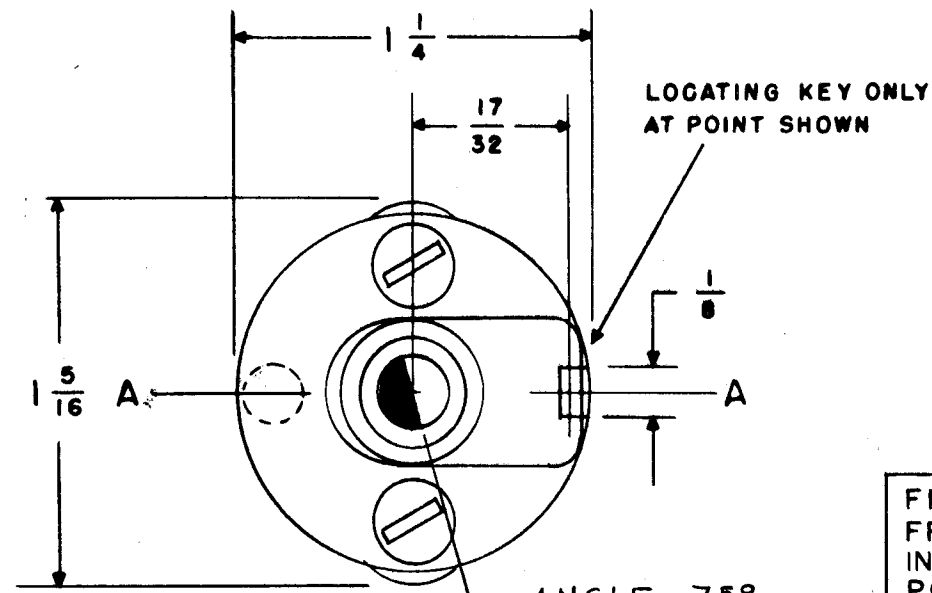
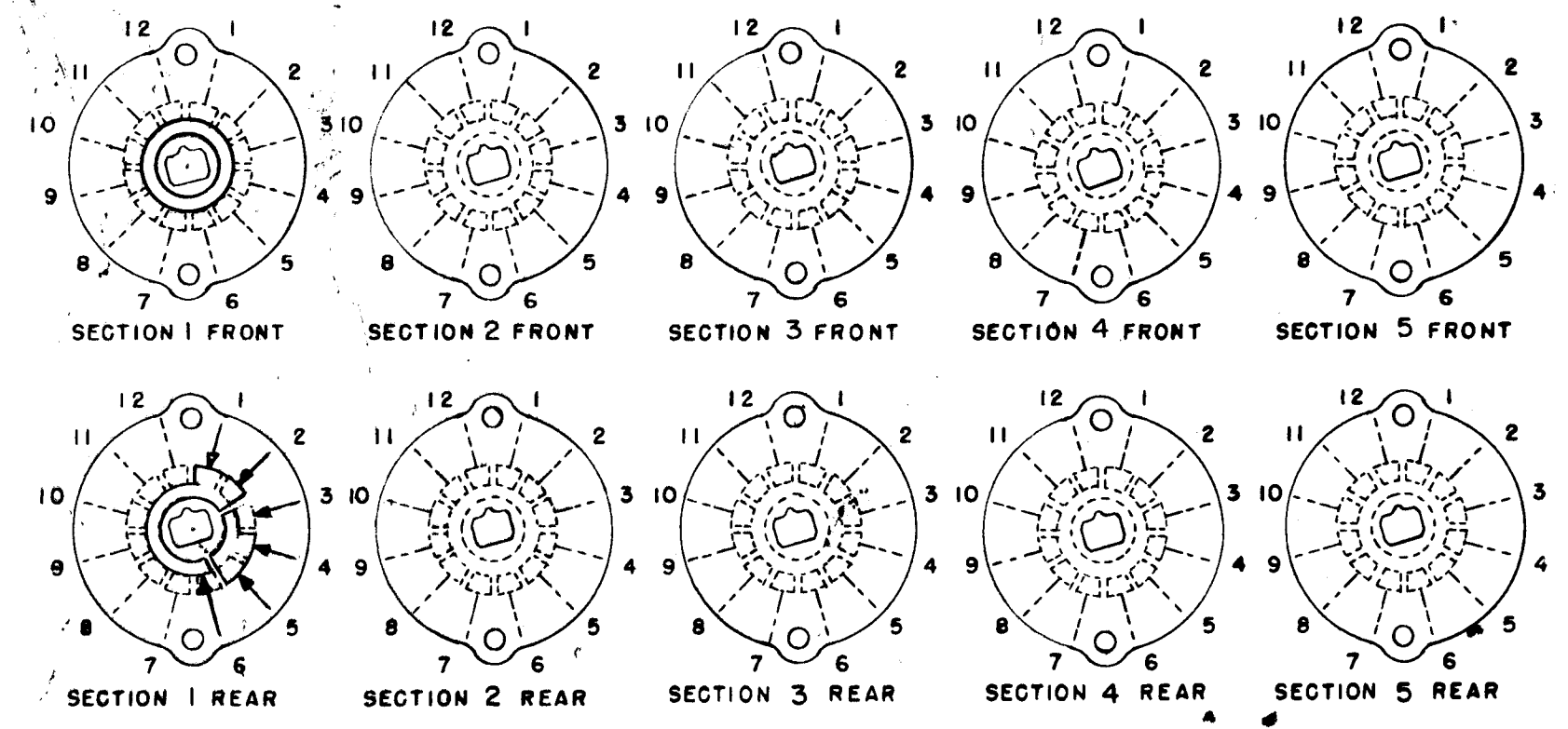


SW-226



FRONT & REAR OF SECTIONS VIEWED FROM FRONT OR KNOB END OF SWITCH IN EXTREME COUNTER-CLOCKWISE POSITION

NUMBER OF SECTIONS $\frac{1}{2}$
 NUMBER OF POSITIONS $\frac{2}{30^\circ}$ (30° OR 60°)
 ANGLE OF THROW



PART NUMBER SW-226
 STAMP ON FRONT PLATE YES NO

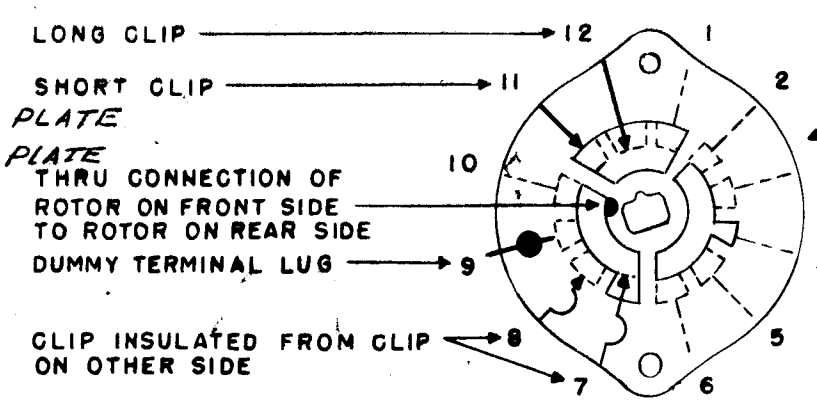
CONTACTS & ROTORS: (IF NOT SPECIFIED, SHORTING TYPE WILL BE SUPPLIED)
 SHORTING NON SHORTING

MATERIAL: (IF NOT SPECIFIED, SILVER PLATED BRASS WILL BE SUPPLIED)
 SILVER PLATED BRASS SILVER ALLOY

INSULATION: 1/16 BAKELITE 1/8 MYCALEX
 SPECIFY IMPREGNATION IF REQUIRED

FINISH REQUIREMENTS: COMMERCIAL ARMY NAVY
 SALT TEST (IF ANY GIVE DETAILS) _____

HARDWARE: SUPPLY
 1 3/8-32 NUTS 2 ACROSS FLATS MATERIAL BRASS NICKEL PLATE
 1 3/8 INTERNAL TOOTH LOCKWASHERS MATERIAL BRASS NICKEL PLATE



SYMBOLS USED IN MARKING PRINT

OAK TYPE F SWITCH

ISSUE	ITEM	CHANGED FROM	DATE	CH. NO.	DRAFTS	CHECKER	ENG. APP.
TOLERANCES			SCALE:				
DEC. DIM. ±			MAXIMUM ALLOWABLE TOLERANCES HAVE BEEN DETERMINED AND ANY DEVIATIONS WILL BE CAUSE FOR REJECTION. REMOVE ALL BURRS AND SHARP EDGES				
FRAC. DIM. ±							
ANGULAR DIM. †							

OUTLINE ROTOR BLADES AS SHOWN ABOVE WITH SWITCH IN EXTREME COUNTER-CLOCKWISE POSITION

REQ. PER UNIT	MSR-3,4	PROJECT NO.	9-14-58
MODEL		DATE	

REQ. ITEM	PART NO.	DESCRIPTION	SYMBOL
THE TECHNICAL MATERIEL CORP. MAMARONECK, NEW YORK			
MANUAL, XTAL SWITCH			
MATERIAL		9/14/58	file
TYPE & TEMPER		DRAWN	CHECKED
HEAT TREAT. SPEC.		PPK	222
FINISH & SPEC. NO.		ELEC. DES. APP.	MECH. DES. APP.
		SW-226	