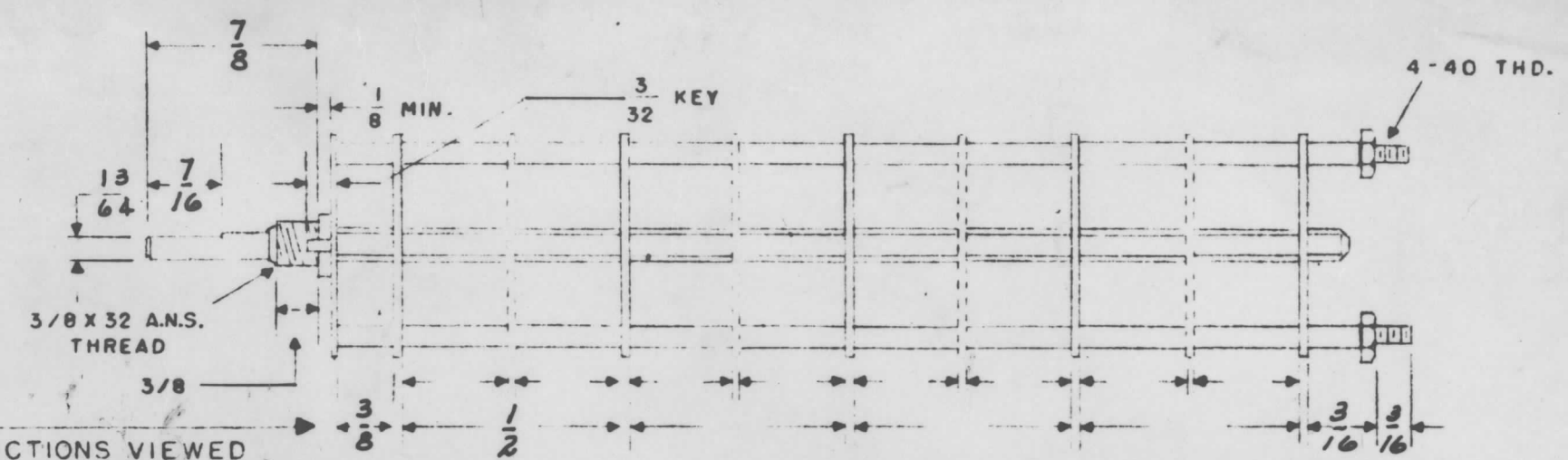
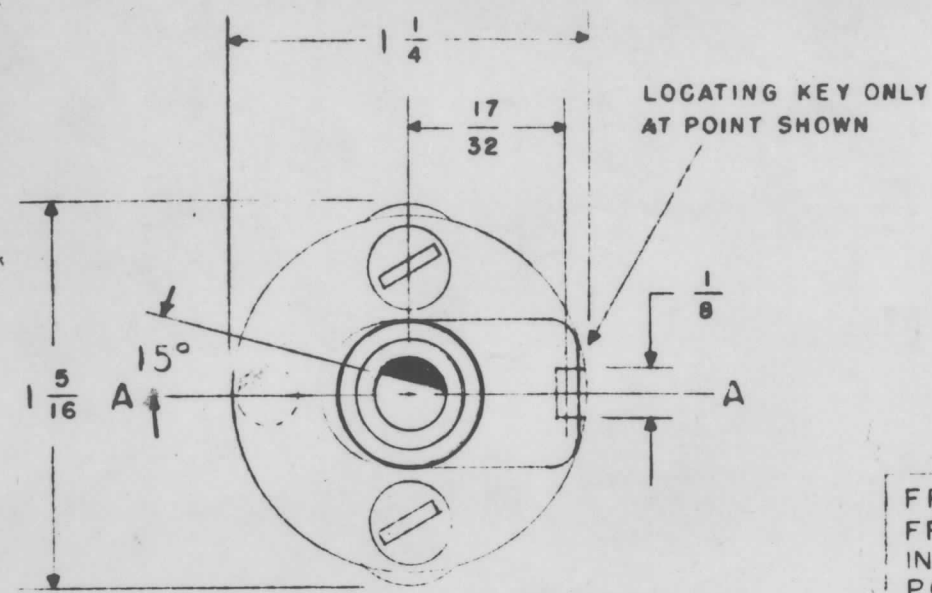


SW-223



FRONT & REAR OF SECTIONS VIEWED FROM FRONT OR KNOB END OF SWITCH IN EXTREME COUNTER-CLOCKWISE POSITION

SHOW CUT AWAY PORTION OF FLAT IN BLACK AND GIVE ANGLE TO LINE A-A $\pm 3^\circ$.
(STANDARD RMA KNURLED AND SLOTTED SHAFT ALSO AVAILABLE)

NUMBER OF SECTIONS 2
NUMBER OF POSITIONS 11
ANGLE OF THROW 30° (30° OR 60°)

PART NUMBER SW-223
STAMP ON FRONT PLATE YES NO

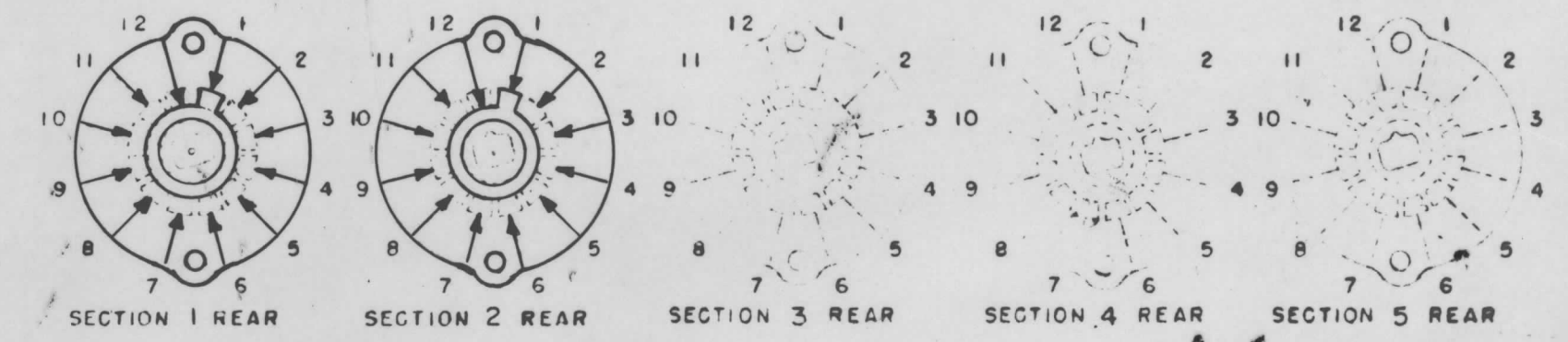
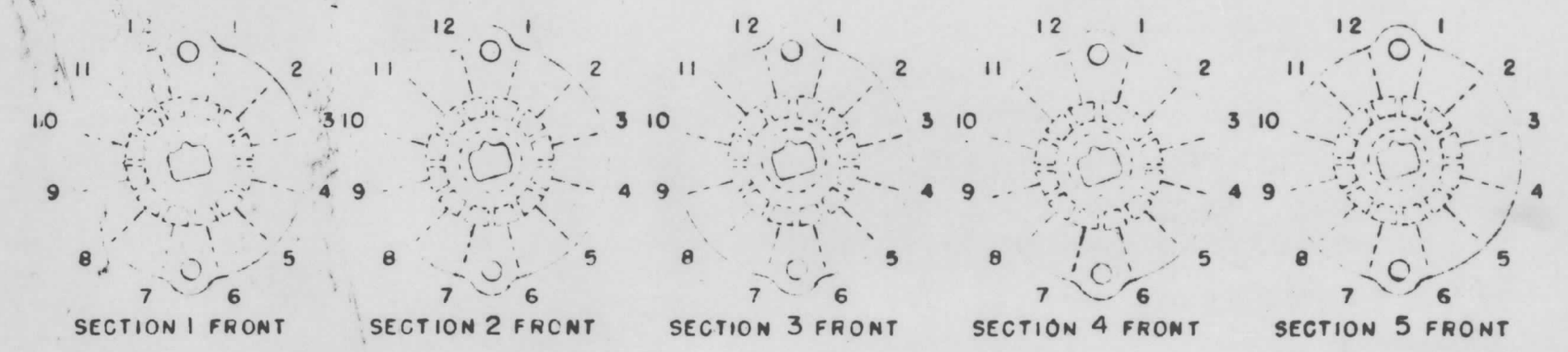
CONTACTS & ROTORS: (IF NOT SPECIFIED, SHORTING TYPE WILL BE SUPPLIED)
SHORTING NON SHORTING

MATERIAL: (IF NOT SPECIFIED, SILVER PLATED BRASS WILL BE SUPPLIED)
SILVER PLATED BRASS SILVER ALLOY

INSULATION: 1/16 BAKELITE 1/8 MYCALEX
SPECIFY IMPREGNATION IF REQUIRED _____

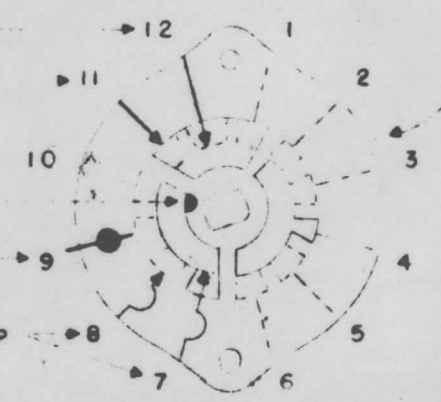
FINISH REQUIREMENTS: COMMERCIAL ARMY NAVY
SALT TEST (IF ANY GIVE DETAILS) _____

HARDWARE: SUPPLY
1 3/8-32 NUTS 2 ACROSS FLATS
1 3/8 INTERNAL TOOTH LOCKWASHERS



LONG CLIP
SHORT CLIP

THRU CONNECTION OF ROTOR ON FRONT SIDE TO ROTOR ON REAR SIDE
DUMMY TERMINAL LUG
CLIP INSULATED FROM CLIP ON OTHER SIDE



SYMBOLS USED IN MARKING PRINT

OAK TYPE F SWITCH

ISSUE	ITEM	CHANGED FROM	DATE	CH. NO.	DRAFTS	CHECKER	ENG. APP.
TOLERANCES			SCALE:				
DEC. DIM. \pm			MAXIMUM ALLOWABLE TOLERANCES HAVE BEEN DETERMINED AND ANY DEVIATIONS WILL BE CAUSE FOR REJECTION. REMOVE ALL BURRS AND SHARP EDGES				
FRAC. DIM. \pm							
ANGULAR DIM. \pm							

OUTLINE ROTOR BLADES AS SHOWN ABOVE WITH SWITCH IN EXTREME COUNTER-CLOCKWISE POSITION

1	SWR-3000		6-11-58
REQ. PER UNIT	MODEL	PROJECT NO.	ASS'Y. NO.
			DATE
	USED ON		

REQ. ITEM	PART NO.	DESCRIPTION	SYMBOL
THE TECHNICAL MATERIEL CORP. MAMARONECK, NEW YORK			
SWITCH, ROTARY, 11 Pos.			
MODEL SWR-3000			
TYPE & TEMPER		HEAT TREAT. SPEC.	DRAWN
FINISH & SPEC. NO.		ELEC. DES. APP.	MECH. DES. APP.
		6-11-58 ase	JSR
		ADT	SW-223