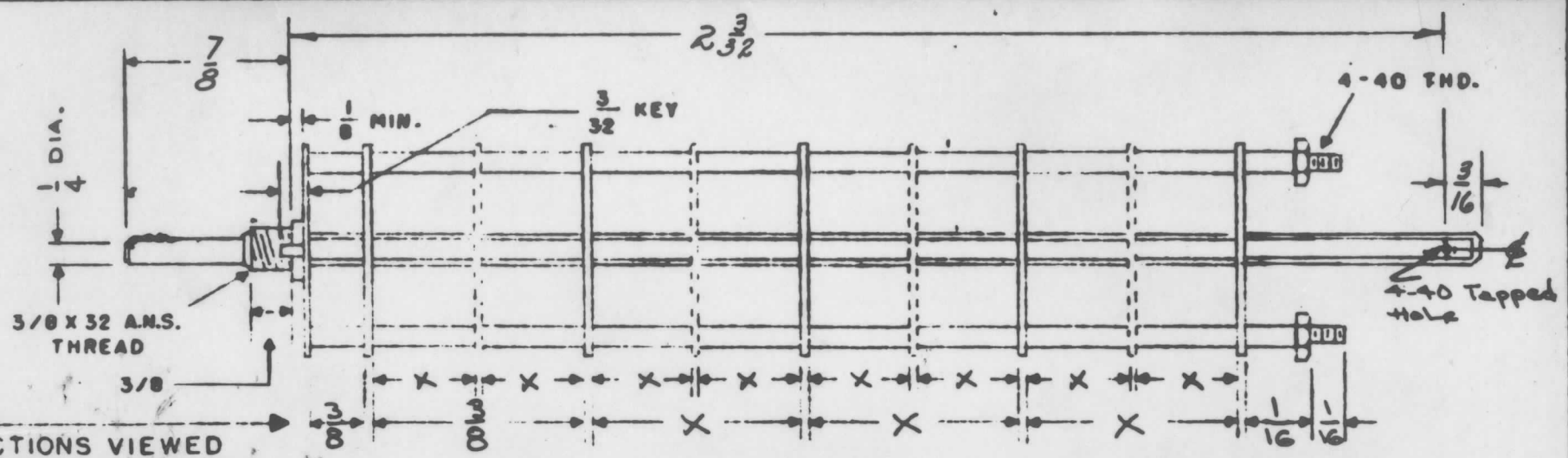
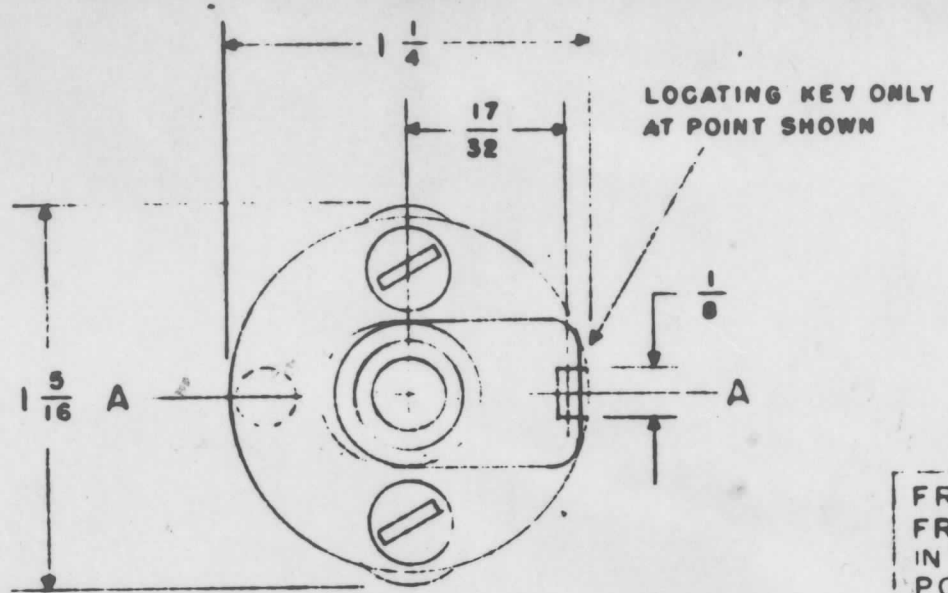


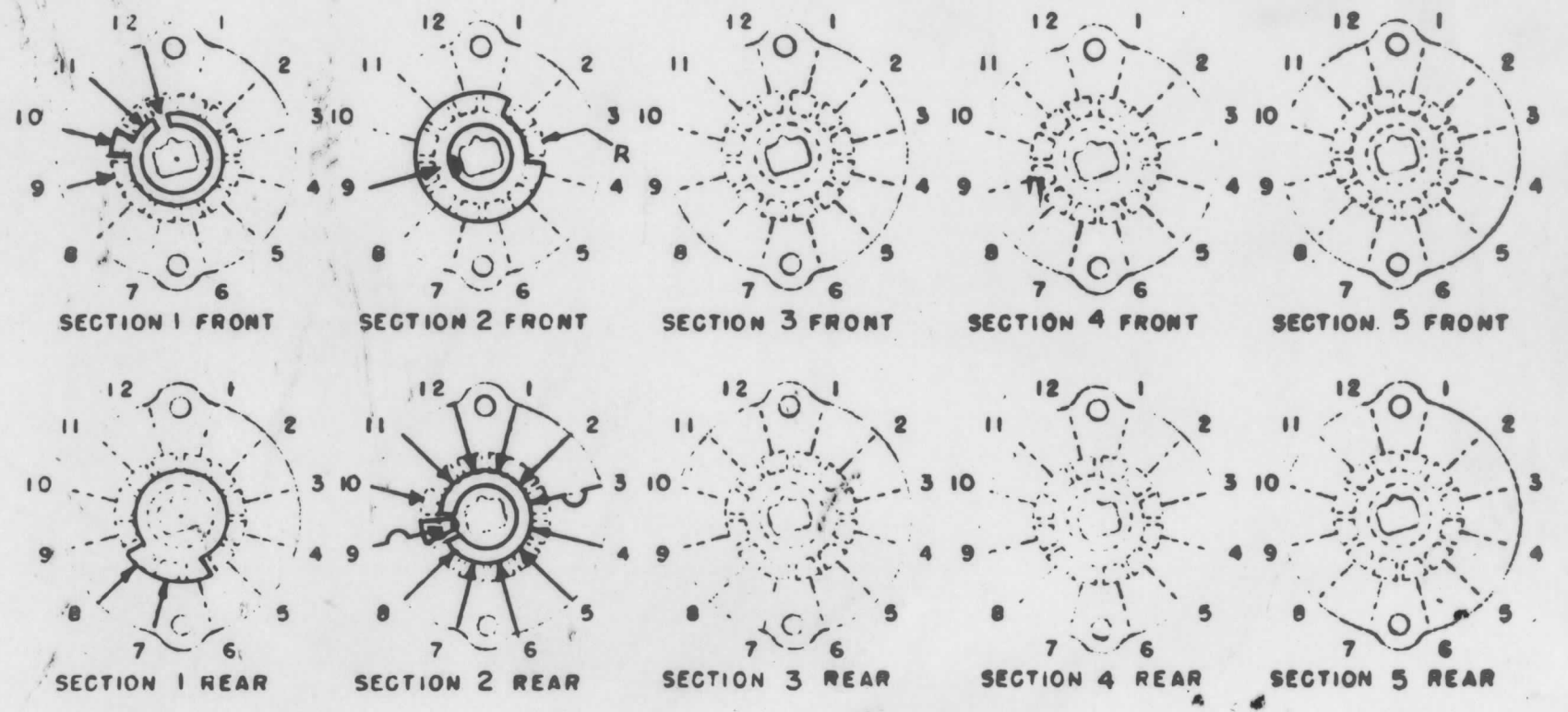
SW-222



FRONT & REAR OF SECTIONS VIEWED FROM FRONT OR KNOB END OF SWITCH IN EXTREME COUNTER-CLOCKWISE POSITION

SHOW CUT AWAY PORTION OF FLAT IN BLACK AND GIVE ANGLE TO LINE A-A ± 3°. (STANDARD RMA KNURLED AND SLOTTED SHAFT ALSO AVAILABLE)

NUMBER OF SECTIONS 2
 NUMBER OF POSITIONS 12 WITH STOP
 ANGLE OF THROW 30° (30° OR 60°)



PART NUMBER SW-222
 STAMP ON FRONT PLATE YES NO

CONTACTS & ROTORS: (IF NOT SPECIFIED, SHORTING TYPE WILL BE SUPPLIED)
 SHORTING NON SHORTING

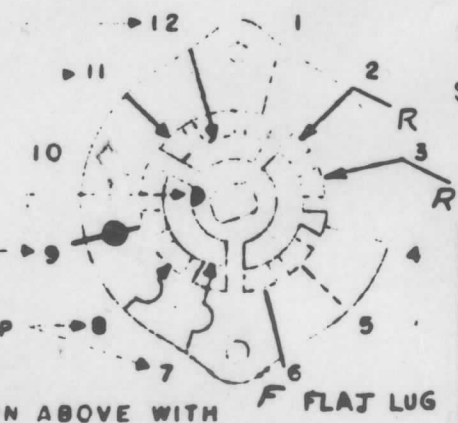
MATERIAL: (IF NOT SPECIFIED, SILVER PLATED BRASS WILL BE SUPPLIED)
 SILVER PLATED BRASS SILVER ALLOY

INSULATION: 1/16 BAKELITE 1/8 MYCALEX
 SPECIFY IMPREGNATION IF REQUIRED _____

FINISH REQUIREMENTS: COMMERCIAL ARMY NAVY
 SALT TEST (IF ANY GIVE DETAILS) _____

HARDWARE SUPPLY
 3/8-32 NUTS 2 ACROSS FLATS
 3/8 INTERNAL TOOTH LOCKWASHERS

LONG CLIP
 SHORT CLIP
 THRU CONNECTION OF ROTOR ON FRONT SIDE TO ROTOR ON REAR SIDE
 DUMMY TERMINAL LUG
 CLIP INSULATED FROM CLIP ON OTHER SIDE



SYMBOLS USED IN MARKING PRINT
 SHORT CLIP REVERSE LUG
 LONG CLIP
 R REVERSE LUG
 OAK TYPE F SWITCH

OUTLINE ROTOR BLADES AS SHOWN ABOVE WITH SWITCH IN EXTREME COUNTER-CLOCKWISE POSITION

ISSUE ITEM	CHANGED FROM	DATE	CH. NO.	DRAFTS	CHECKER	ENG. APP.
TOLERANCES						
SCALE:						
DEC. DIM. ±						
FRAC. DIM. ±						
ANGULAR DIM. ±						
MAXIMUM ALLOWABLE TOLERANCES HAVE BEEN DETERMINED AND ANY DEVIATIONS WILL BE CAUSE FOR REJECTION. REMOVE ALL BURRS AND SHARP EDGES						

REQ. UNIT	MODEL	PROJECT NO.	ASS'Y. NO.	DATE
1	GPR 90 RX			

REQ. ITEM	PART NO.	DESCRIPTION	SYMBOL
THE TECHNICAL MATERIEL CORP. MAMARONECK, NEW YORK			
HFO SWITCH			
GPR 90 RX 12 POSITION			
STOCK SIZE			
MATERIAL			
TYPE & TEMPER			
HEAT TREAT. SPEC.			
FINISH & SPEC. NO.			
DRAWN		CHECKED	
ELEC. DES. APP.		MECH. DES. APP.	