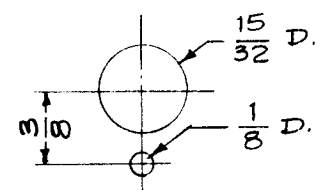
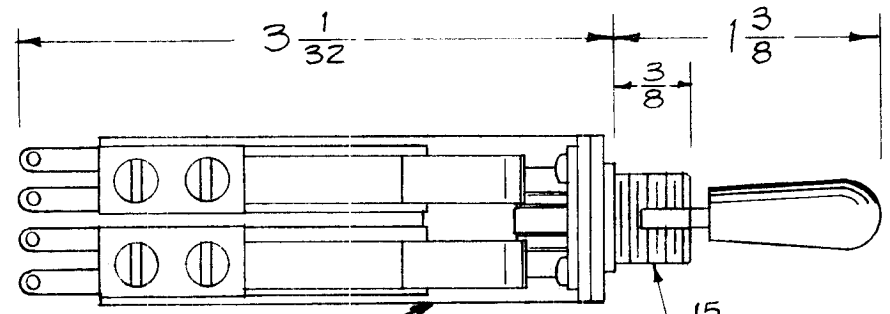
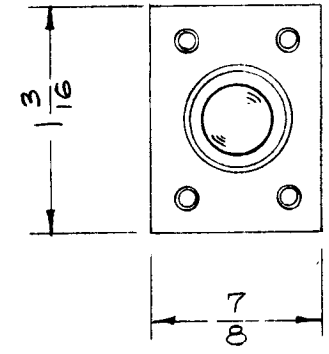
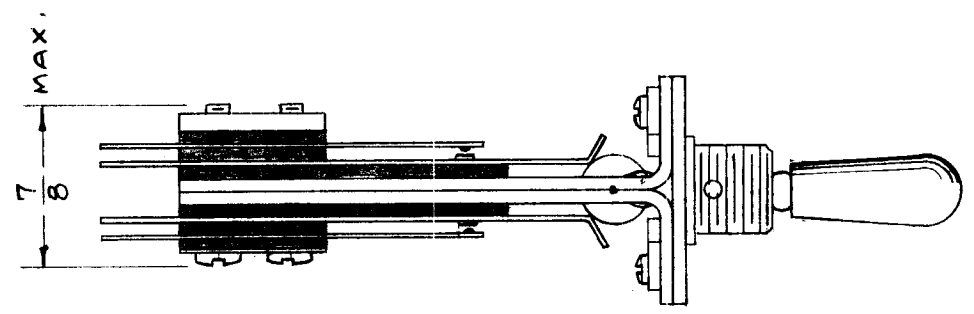
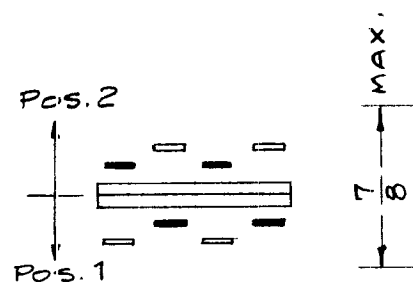


| REQ. PER UNIT | USED ON | | |
|---------------|-----------|-----------|--------|
| | MODEL | ASSY. NO. | DATE |
| 1 | ATS-MCU | | 2-5-58 |
| 1 | ATS-MCU-2 | | 6-8-59 |

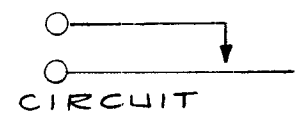
SW-213 B



METAL STAMP TMC PART No. ON LEG
15/32 - 32 NEF THD.

MOUNTING DETAIL
(For Non-Turn Washer)

MFG. Will Supply one Hex Nut - 9/16" across Flats - 15/32 - 32 Thd, 1/16" THK, and one Non-Turn Washer



CIRCUIT
TWO IN POS. 1
TWO IN POS. 2

REF- SWITCHCRAFT, INC. #16038

| REQ. | ITEM | PART NO. | DESCRIPTION | SYMBOL | | | | | | | | | | | | | |
|----------------|------|--|---|---------|--------|---------|-----------|--------------------|--|-------------------|--|-----------------|--|-----------------|--|---|--|
| B | 1 | TMC PART No. RELOCATED | THE TECHNICAL MATERIEL CORP. MAMARONECK. NEW YORK | | | | | | | | | | | | | | |
| A | 1 | METAL STAMP ADDED | SWITCH, LEVER, 3 POS. NON-LOCKING | | | | | | | | | | | | | | |
| ISSUE ITEM | | CHANGED FROM | DATE | CH. NO. | DRAFTS | CHECKER | ENG. APP. | MATERIAL | | DRAWN | | CHECKED | | FINAL APPROVAL | | | |
| TOLERANCES | | SCALE: FULL | | | | | | TYPE & TEMPER | | HEAT TREAT. SPEC. | | ELEC. DES. APP. | | MECH. DES. APP. | | | |
| DEC. DIM. ± | | MAXIMUM ALLOWABLE TOLERANCES HAVE BEEN DETERMINED AND ANY DEVIATIONS WILL BE CAUSE FOR REJECTION. REMOVE ALL BURRS AND SHARP EDGES | | | | | | FINISH & SPEC. NO. | | DRAWN | | CHECKED | | FINAL APPROVAL | | | |
| FRAC. DIM. ± | | | | | | | | 16 2/5/58 | | JMC | | ATT | | SW-213 | | B | |
| ANGULAR DIM. ± | | | | | | | | | | | | | | | | | |