

CUSTOMER'S SW-208

The Technical Material Corporation

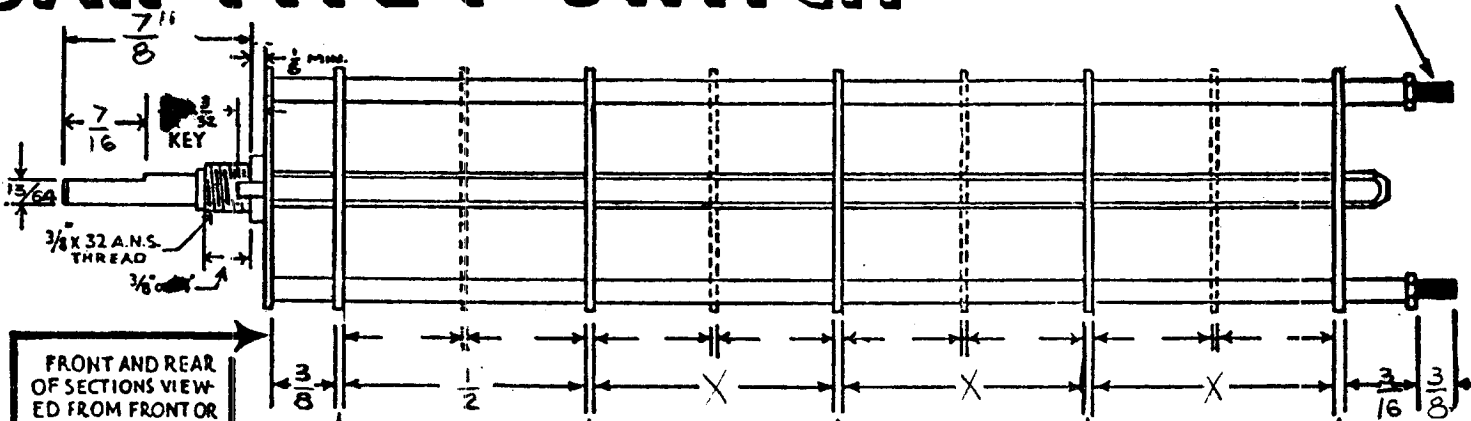
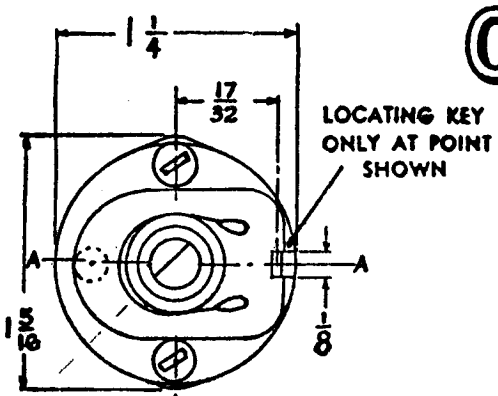
CUSTOMER

OAK MFG. CO.

1260 CLYBOURN AVE., CHICAGO 10, ILL.

ATS CONTROL MODEL SW-208-A 4-40 THREAD

# OAK TYPE F SWITCH



LOCATING KEY ONLY AT POINT SHOWN

SHOW CUT AWAY PORTION OF FLAT IN BLACK AND GIVE ANGLE TO LINE A-A, ± 3° STANDARD RMA KNURLED AND SLOTTED SHAFT ALSO AVAILABLE

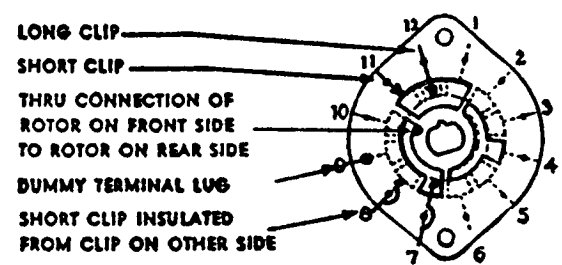
FRONT AND REAR OF SECTIONS VIEWED FROM FRONT OR KNOB END OF SWITCH IN EXTREME COUNTER-CLOCKWISE POSITION

NUMBER OF SECTIONS  $\frac{2}{4}$

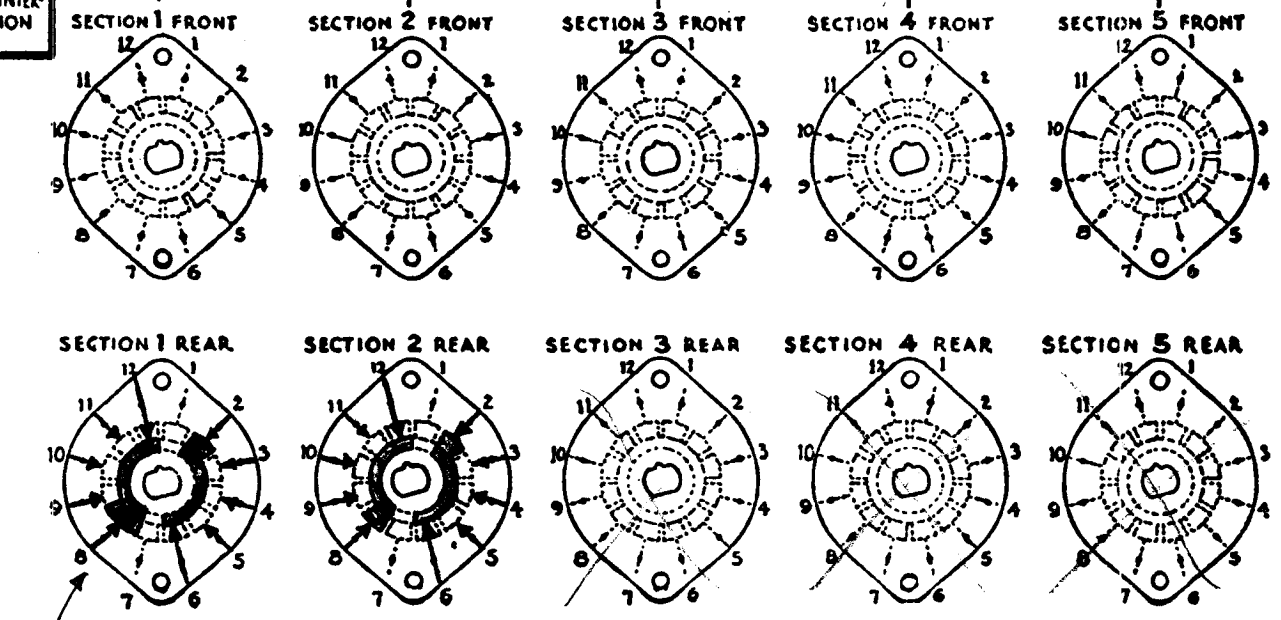
NUMBER OF POSITIONS  $\frac{2}{4}$

ANGLE OF THROW  $\frac{30}{(30^\circ \text{ OR } 60^\circ)}$

### SYMBOLS USED IN MARKING PRINT



OUTLINE ROTOR BLADES AS SHOWN ABOVE WITH SWITCH IN EXTREME COUNTER-CLOCKWISE POSITION



SHORTING CONTACT

All others are non-shorting

CUSTOMER NOTES

### SPECIFICATIONS

SHORTING TYPE CONTACTS  NON-SHORTING  IF NOT SPECIFIED SHORTING TYPE WILL BE SUPPLIED.

INSULATION:  $\frac{1}{16}$  BAKELITE   $\frac{1}{8}$  MYCALEX  SPECIFY IMPREGNATION IF REQUIRED.

FINISH REQUIREMENTS: COMMERCIAL  ARMY  NAVY  SALT TEST (IF ANY GIVE DETAILS)

CONTACTS AND ROTORS: SILVER PLATED BRASS  SOLID SILVER ALLOY  IF NOT SPECIFIED SILVER PLATED BRASS WILL BE SUPPLIED.

MOUNTING HARDWARE: SUPPLY  $\frac{1}{8}$ " . 32 NUTS  $\frac{1}{2}$ " ACROSS FLATS; MATERIAL brass PLATING Nickel

$\frac{1}{8}$ " INTERNAL TOOTH LOCKWASHER; MATERIAL brass PLATING Nickel

STAMP PART NUMBER SW-208 ON FRONT PLATE, YES  NO

SWITCH, ROTARY MODEL ATS-MCU-2	
THE TECHNICAL MATERIAL CORPORATION MAMARONECK, NEW YORK	
DATE <u>1-17-58</u>	CHKD. <u>SPF</u>
DRAWN <u>[Signature]</u>	APPD. <u>[Signature]</u>
SHEET <u>OF</u>	NO. <u>SW-208</u>   <u>A</u>

DATE 1-17-58

