

IF IT IS FOUND DESIRABLE TO CHANGE ANY TOLERANCE OR OTHER DETAIL SPECIFIED ON THIS DRAWING NOTIFY THE PURCHASER PROMPTLY.		DIMENSIONS IN INCHES UNLESS OTHERWISE SPECIFIED.					
MAXIMUM ALLOWABLE TOLERANCES HAVE BEEN DETERMINED AND DEVIATIONS WILL BE CAUSE FOR REJECTION. REMOVE ALL BURRS AND SHARP EDGES.							
ISSUE	ITEM	CHANGED FROM	DATE	CN NO	DRAFTS	CHECKER	ENG. APP
Φ		PROD RELEASE	12/71		AR	MA	
A		REV PER CEMM	28 JUNE 72	1188	C.C.	4B	

SPECIFICATIONS

MECHANICAL

WAFER MATERIAL:- PHENOLIC .062 THK
 NUMBER OF WAFERS:- 3
 NUMBER OF POSITIONS:- 12 (NO STOP)
 ANGLE OF THROW:- 30°
 CONTACT MATERIAL:- SILVER PLATED BRASS
 OPERATING TEMPERATURE:- -25°C TO +85°C

SPECIAL REQUIREMENTS

ELECTRICAL

CURRENT CARRYING CAPACITY:- 5 AMPERES
 DIELECTRIC STRENGTH:-

SPECIAL REQUIREMENTS

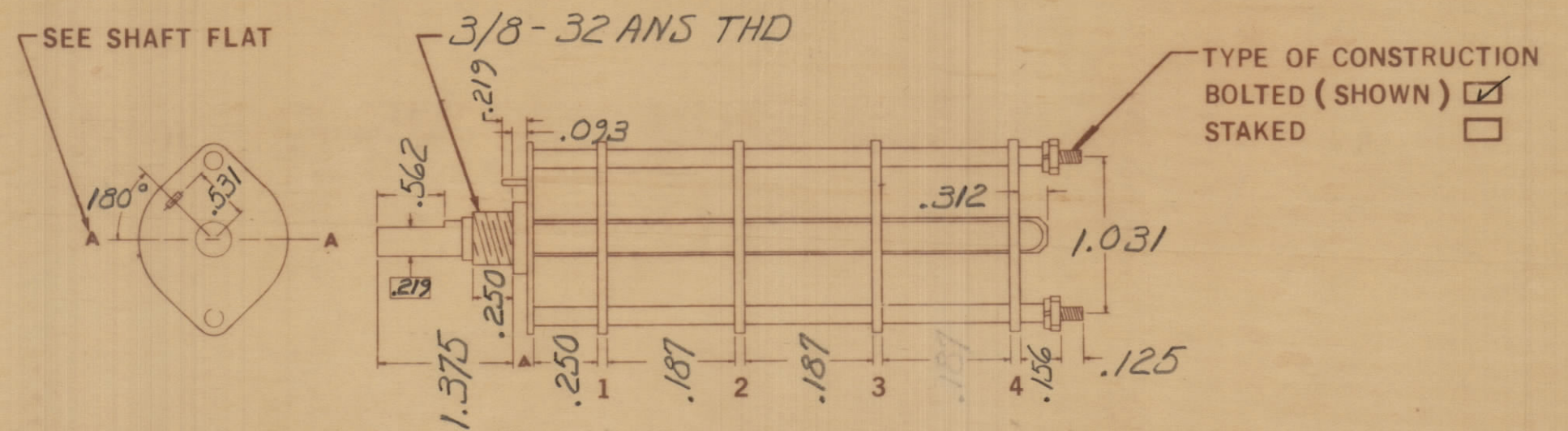
CONTACTS TO BE STANDARD - SHORTING

- 2- SWITCH TO BE SUPPLIED WITH MOUNTING HARDWARE
- 1- PERMANENTLY MARK TMC PART NO. "SW10068" ON SWITCH MOUNTING PLATE

NOTES

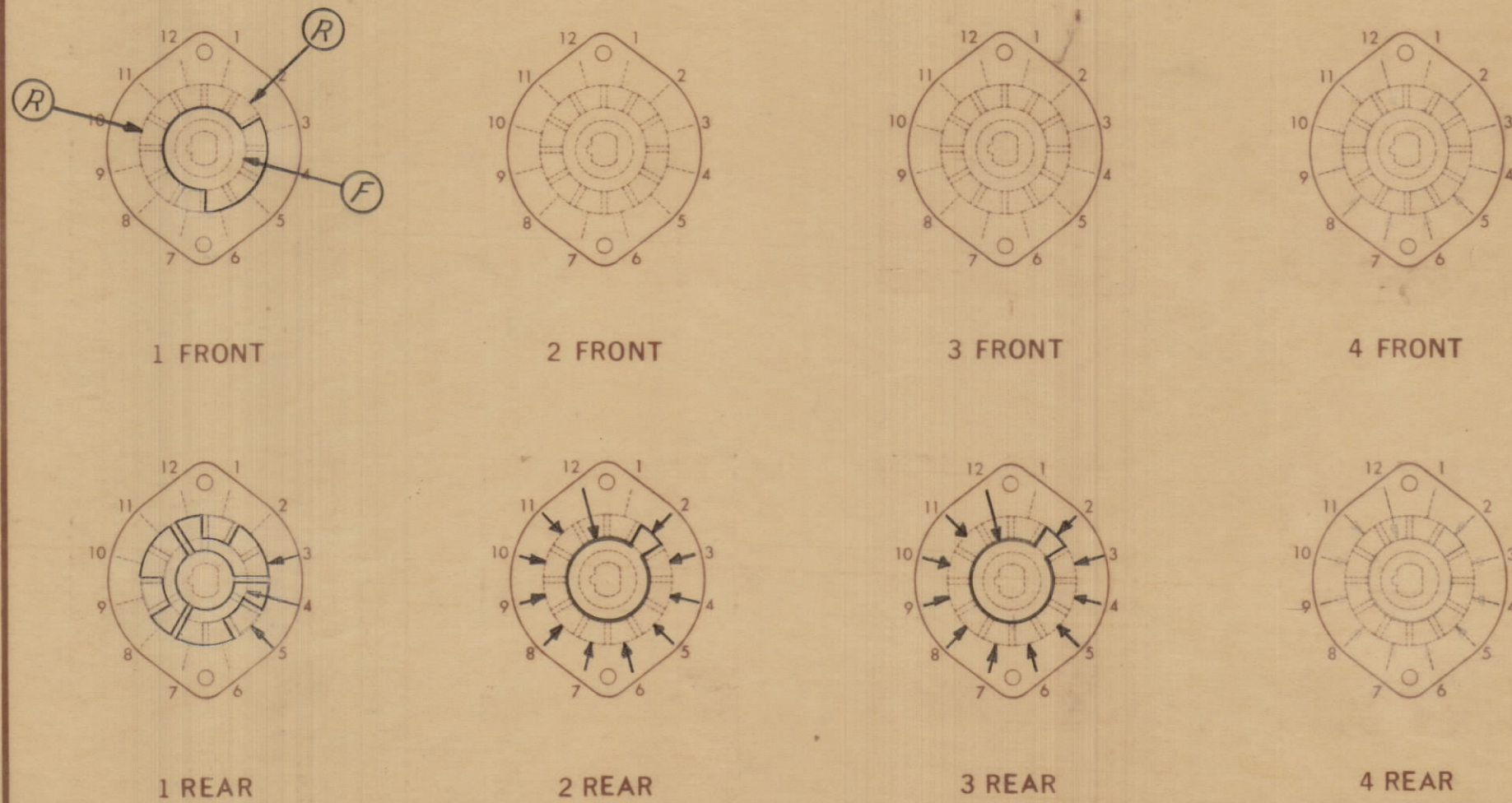
PHYSICAL CHARACTERISTICS

4 WAFERS SHOWN
WAFERS MAY BE ADDED (SEE SHEET 2)



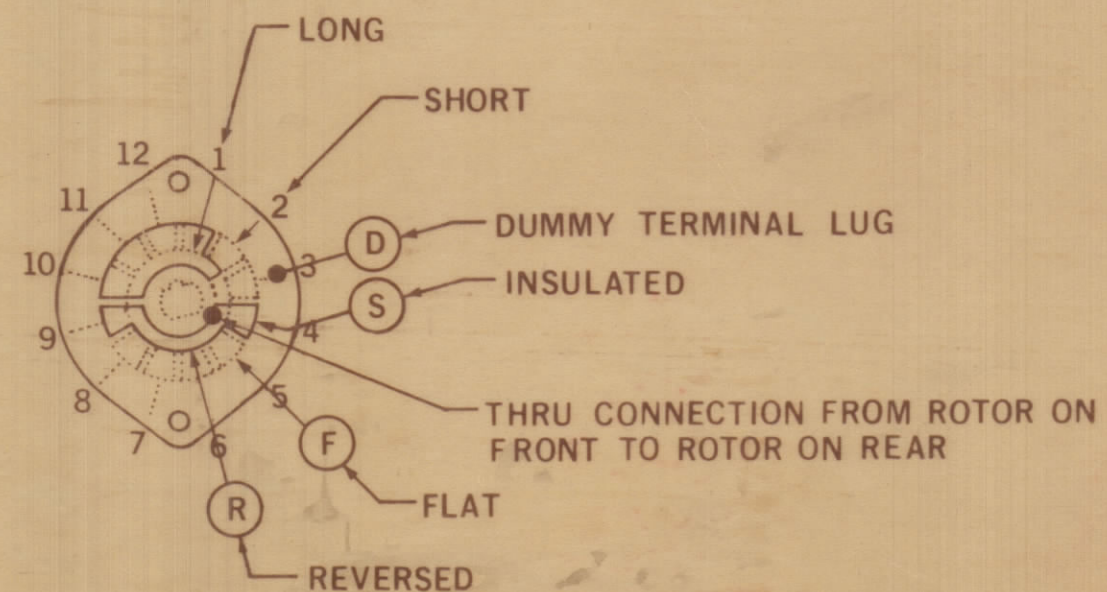
MARKING PRINT

FRONT & REAR SECTIONS VIEWED FROM FRONT OR KNOB END OF SWITCH IN EXTREME COUNTER-CLOCKWISE POSITION (FOR ADDITIONAL WAFERS SEE SHEET 2)



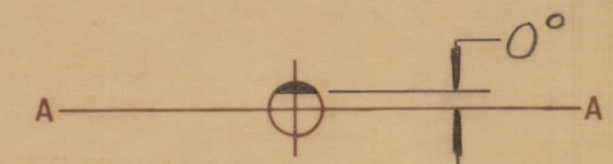
SW10068 A

CLIP DESIGNATIONS



SHAFT FLAT (IF REQ'D)

SHOW CUT-AWAY PORTION OF SHAFT IN BLACK & SHOW ANGULAR DIMENSION FROM DATUM A-A WHEN SHAFT IS IN EXTREME COUNTER-CLOCKWISE POSITION



TOLERANCES		SCALE
DEC DIM ± .015		
FRAC DIM ± 1/64		
ANGULAR DIM ± 0° 30'		

MANUFACTURER - S401-13
 TYPE OR PART NO. - TYPE 'F'

MMX-3	110/71	5 MAR 71
MOUF	PROJECT NO	DATE

STOCK SIZE	TMC (Canada) LIMITED OTTAWA ONTARIO	
MATERIAL	SWITCH, ROTARY 12 POS'N	
TYPE & TEMPER	ROJILLIAMS	MECH DES APP
HEAT TREAT SPEC	FINAL APPROVAL	
FINISH & SPEC NO	SW10068 A	