

IF IT IS FOUND DESIRABLE TO CHANGE ANY TOLERANCE OR OTHER DETAIL SPECIFIED ON THIS DRAWING NOTIFY THE PURCHASER PROMPTLY.		DIMENSIONS IN INCHES UNLESS OTHERWISE SPECIFIED					
MAXIMUM ALLOWABLE TOLERANCES HAVE BEEN DETERMINED AND DEVIATIONS WILL BE CAUSE FOR REJECTION REMOVE ALL BURRS AND SHARP EDGES		OTHERWISE SPECIFIED					
ISSUE	ITEM	CHANGED FROM	DATE	CN NO	DRAFTS	CHECKER	ENG. APP
φ		PROD RELEASE	Aug 12 '71		TR	NH	
A		REV PER CEMU	JUNE 26 '72	1188	CL	LB	

SPECIFICATIONS

MECHANICAL

WAFER MATERIAL:- PHENOLIC .062 THK
 NUMBER OF WAFERS:- 3
 NUMBER OF POSITIONS:- 12 (NO STOP)
 ANGLE OF THROW:- 30°
 CONTACT MATERIAL:- SILVER PLATED BRASS
 OPERATING TEMPERATURE:- -25°C TO +85°C

SPECIAL REQUIREMENTS

ELECTRICAL

CURRENT CARRYING CAPACITY:- 5 AMPERES
 DIELECTRIC STRENGTH:- ---

SPECIAL REQUIREMENTS

CONTACTS TO BE STANDARD-SHORTING

2- SWITCH TO BE SUPPLIED WITH MOUNTING HARDWARE

1- PERMANENTLY MARK TMC PART NO. "SW10065" ON SWITCH MOUNTING PLATE

NOTES

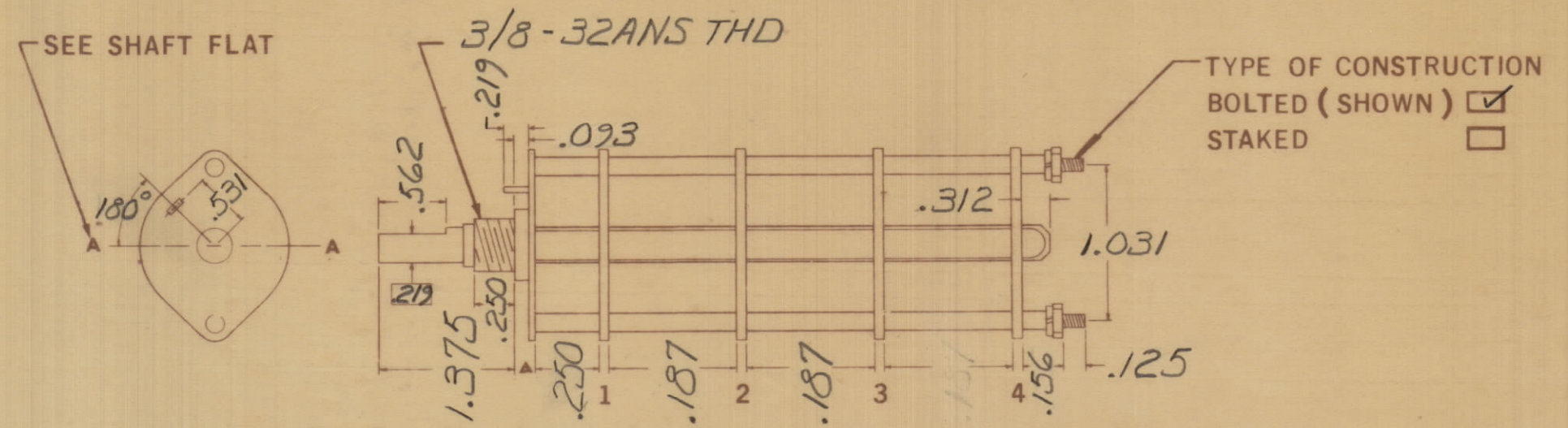
TOLERANCES	SCALE	DRILL PUNCH, COMMERCIAL STOCK SIZES AND MANUFACTURERS TOLERANCES ARE NOT INCLUDED
DEC DIM : <u>.015</u>	1:1	
FRAC DIM : <u>1/64</u>		
ANGULAR DIM : <u>0° 30'</u>		

MANUFACTURER - S401-13
 TYPE OR PART NO. - TYPE 'F'

PHYSICAL CHARACTERISTICS

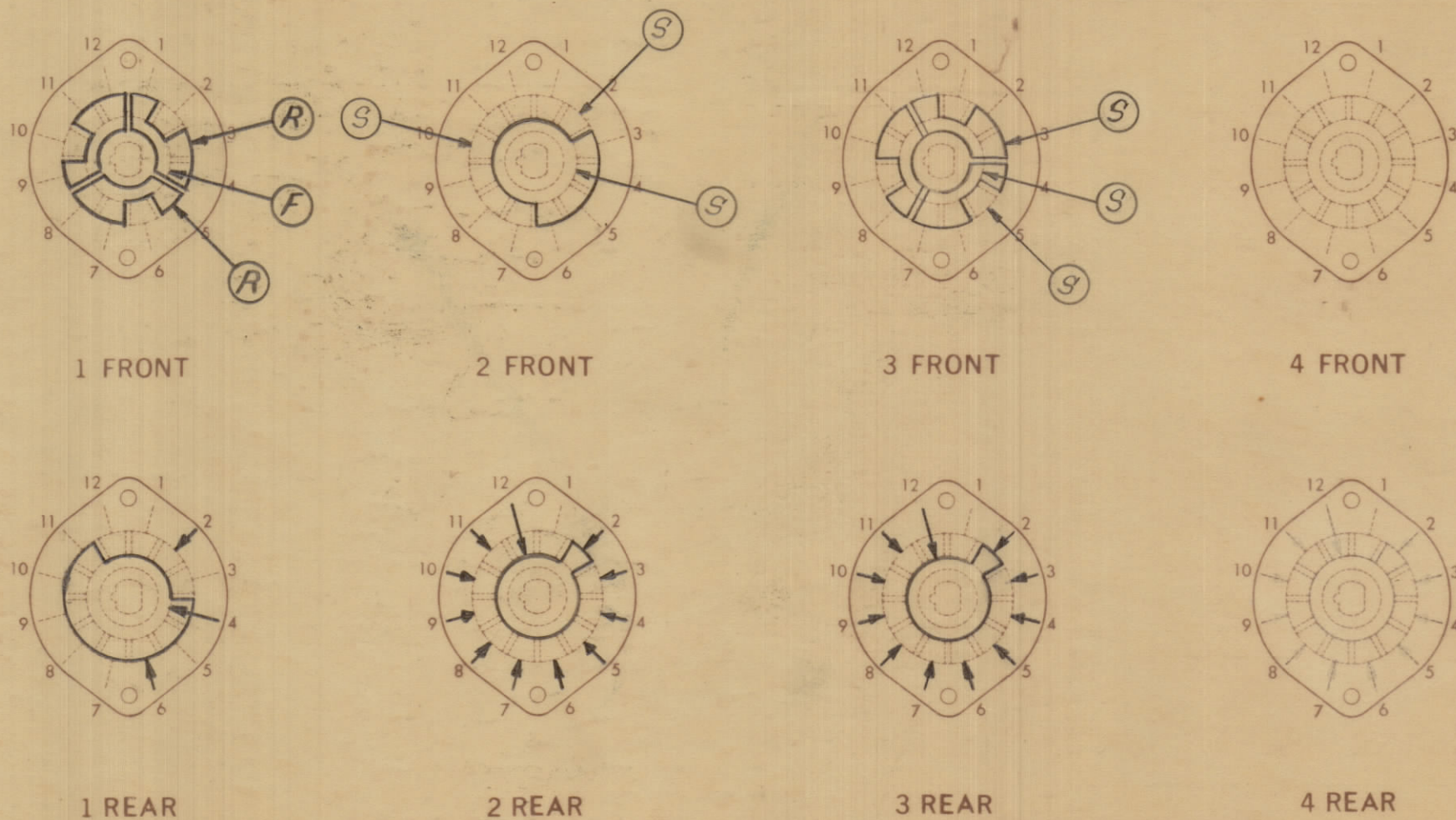
4 WAFERS SHOWN

WAFERS MAY BE ADDED (SEE SHEET 2)



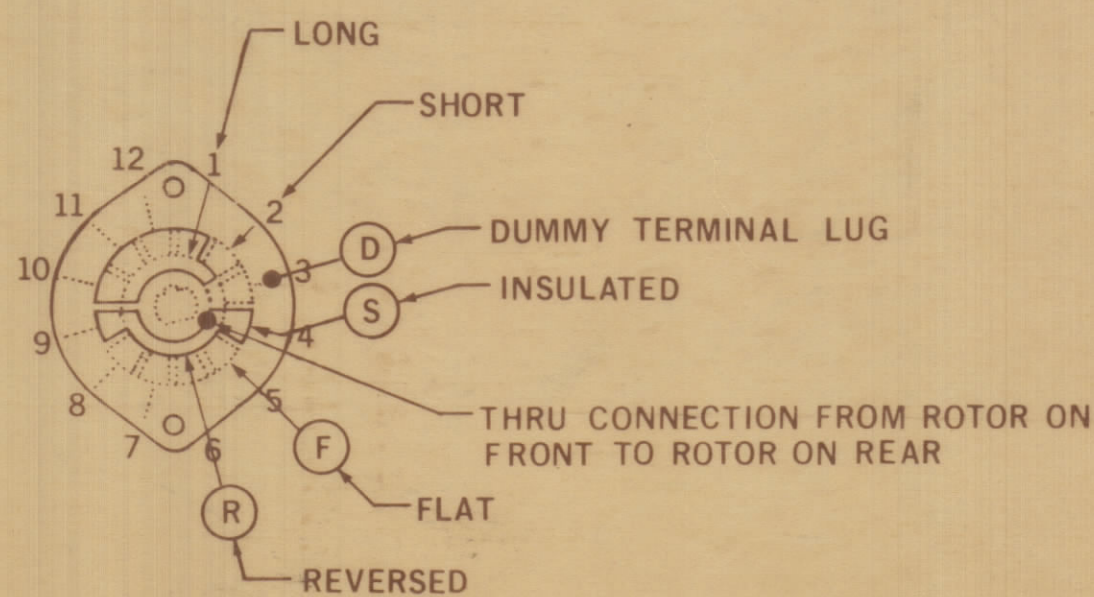
MARKING PRINT

FRONT & REAR SECTIONS VIEWED FROM FRONT OR KNOB END OF SWITCH IN EXTREME COUNTER-CLOCKWISE POSITION (FOR ADDITIONAL WAFERS SEE SHEET 2)



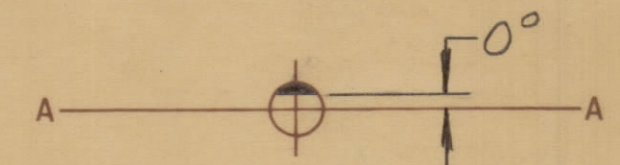
SW10065 A

CLIP DESIGNATIONS



SHAFT FLAT (IF REQ'D)

SHOW CUT-AWAY PORTION OF SHAFT IN BLACK & SHOW ANGULAR DIMENSION FROM DATUM A-A WHEN SHAFT IS IN EXTREME COUNTER-CLOCKWISE POSITION



TMC (Canada) LIMITED OTTAWA ONTARIO	
SWITCH, ROTARY 12 POS'N	
DRIVEN	MECH DES APP
WILLIAMS	
HEAT TREAT SPEC	CHECKED
FINAL APPROVAL	
SW10065 A	

MMX-3 110/71 5 MAR 71