

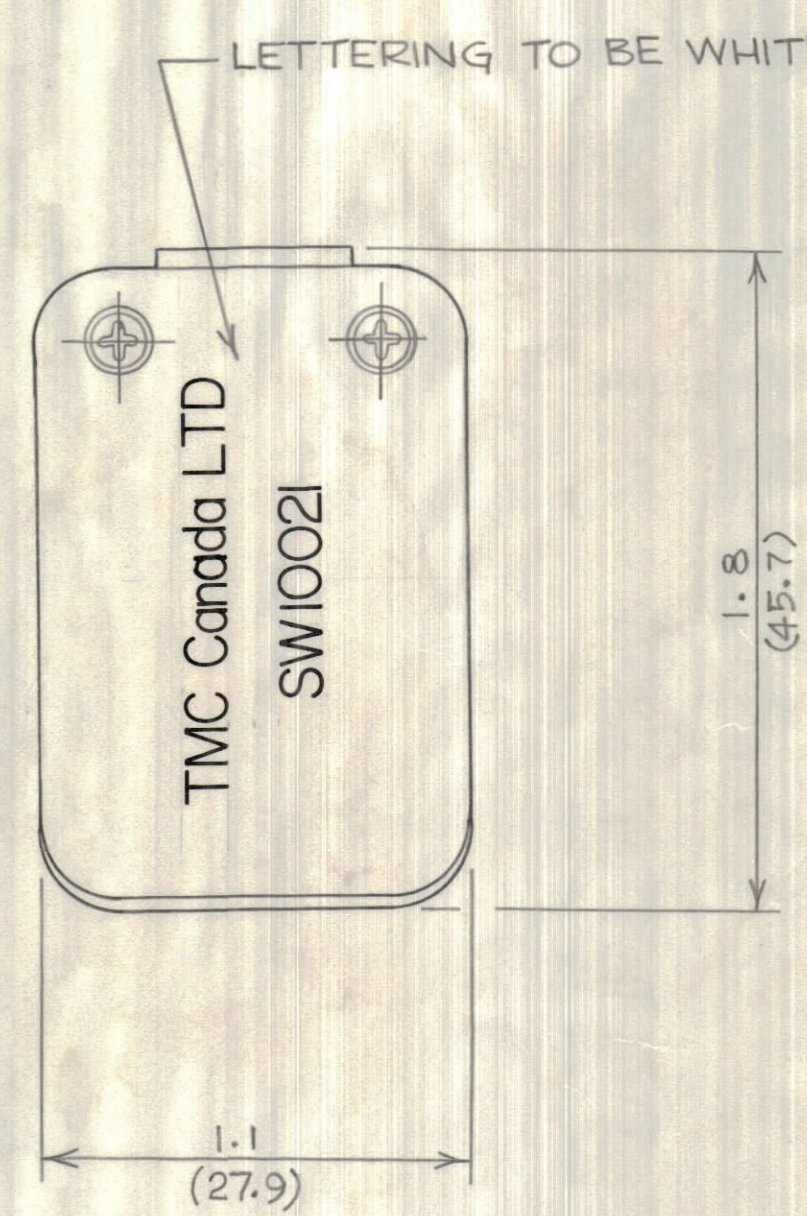
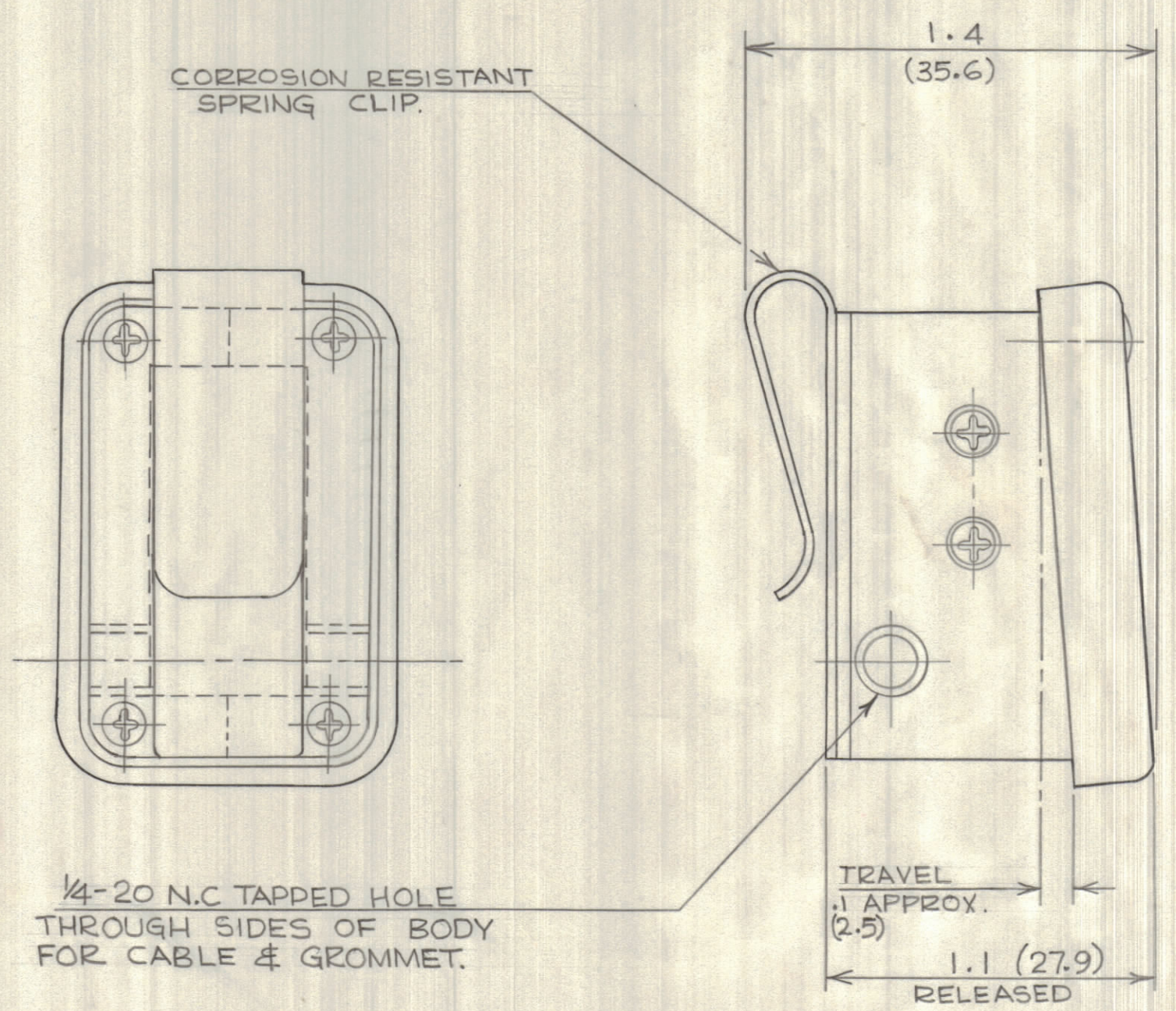
IF IT IS FOUND DESIRABLE TO CHANGE ANY TOLERANCE OR OTHER DETAIL SPECIFIED ON THIS DRAWING NOTIFY THE PURCHASER PROMPTLY.		DIMENSIONS IN INCHES UNLESS OTHERWISE SPECIFIED					
MAXIMUM ALLOWABLE TOLERANCES HAVE BEEN DETERMINED AND DEVIATIONS WILL BE CAUSE FOR REJECTION. REMOVE ALL BURRS AND SHARP EDGES.		OTHERWISE SPECIFIED					
ISSUE	ITEM	CHANGED FROM	DATE	CN. NO.	DRAFTS	CHECKER	ENG. APP.

REQ.	ITEM	PART NO.	DESCRIPTION	SYMBOL
------	------	----------	-------------	--------

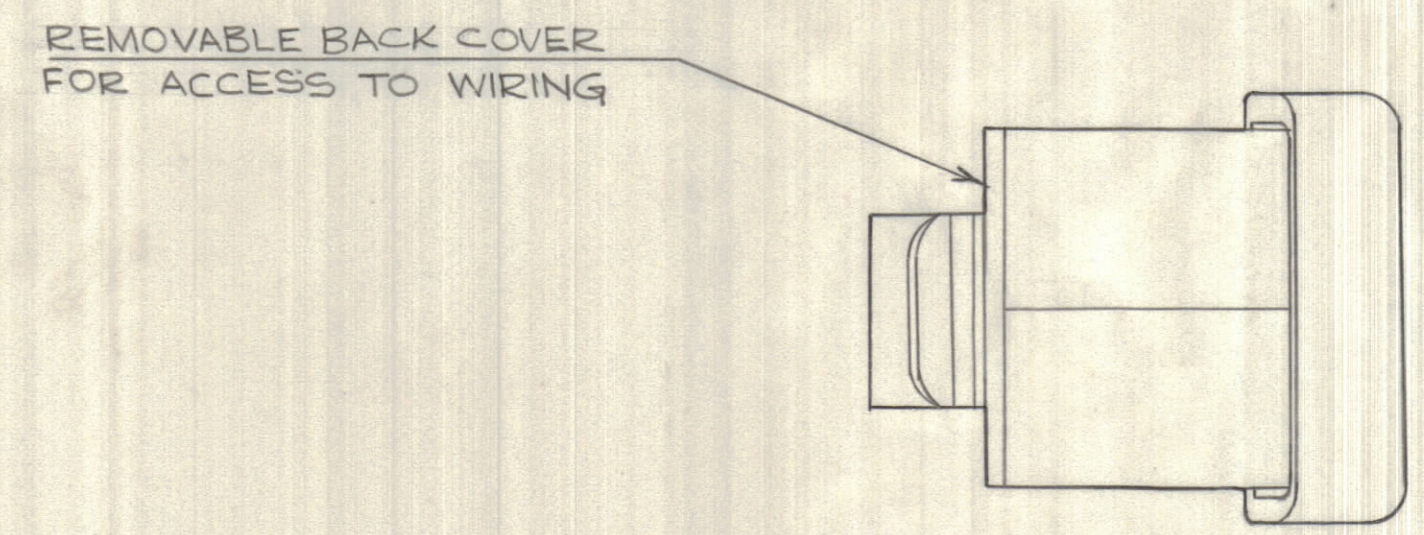
NOTICE TO PERSONS RECEIVING THIS DRAWING

THE TECHNICAL MATERIEL CORPORATION claims proprietary right in the material disclosed herein. This drawing is issued in confidence for engineering information only and may not be reproduced or used to manufacture anything shown hereon without permission from THE TECHNICAL MATERIEL CORPORATION to the user. This drawing is loaned for mutual assistance and is subject to recall at any time.

Property of:
THE TECHNICAL MATERIEL CORPORATION
MAMARONECK, NEW YORK



SW10021



DIMENSIONS IN BRACKETS ARE IN MILLIMETERS

NOTE:
CASE - ALUMINUM, BLACK ANODIZED.
OPERATING FORCE - 25 OZS. APPROX.
SWITCHES - (2) V4 T2 BASIC SWITCHES.
ELECTRICAL RATINGS - 5AMPS 125-250 VAC.
4AMPS 30 VDC RESISTIVE AT 50,000 FT.
3AMPS 30 VDC INDUCTIVE AT SEA LEVEL
2-5AMPS 30 VDC INDUCTIVE AT 50,000 FT.
ARRANGEMENT - 2 POLE N.C. OR N.O. MOMENTARY.

MFR: S10045-33

TOLERANCES		SCALE: 2:1
ALL OTHERS	DEC. DIM. ± FRAC. DIM. ± ANGULAR DIM. ±	DRILL, PUNCH, COMMERCIAL STOCK SIZES AND MANUFACTURERS TOLERANCES ARE NOT INCLUDED.

STANDARD DRAWING

MODEL	PROJECT NO.	ASS'Y. NO.	DATE
			Sept 15-62

STOCK SIZE		TMC (Canada) LIMITED OTTAWA ONTARIO	
MATERIAL		MICRO SWITCH	
TYPE & TEMPER		JPS DRAWN	MECH. DES. APP.
HEAT TREAT. SPEC.		CHECKED	FINAL APPROVAL
FINISH & SPEC. NO.		SW10021	