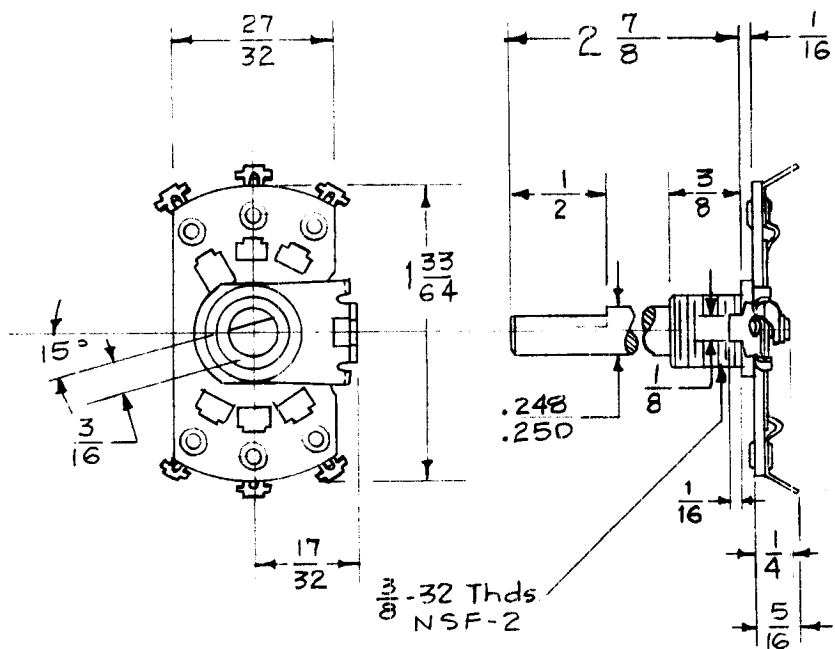


REQ. PER UNIT	USED ON			SW-198
	MODEL	ASS'Y. NO.	DATE	
1	G5B-1		4-26-57	



SPECIFICATIONS

- INDEX MECHANISM — Spring Brass, Single End
- INSULATION — Phenolic, Natural
- FINISH
 - Front Plate — Steel, Lead Coated
 - Shaft — Steel, Cadmium Plated
- CONTACTS
 - Clips — Spring Brass, Silver Plated .0001
 - Rotor Blades — Hard Brass, Silver Plated .0001
 - Contact Res. — Less than 2.75 Milliohms
- MOUNTING HARDWARE (To Be Supplied By MFG.)
 - One 3/8-32 Nut, 1/8 thk., 1/2 across flats, Brass, Cadmium Plate (TMC Equiv. - NTH3732BC16)
 - One 3/8 Internal tooth Lockwasher, Bronze, Cadmium Plate (TMC Equiv. - LWI37MRC)

NOTE- Angle of flat shown with Switch in C.C.W. Position, as viewed from front.

Angle of throw - 30°
Rotor Insulated

REF- OAK Mfg Co. Type 22 - DPDT

REQ.	ITEM	PART NO.	DESCRIPTION	SYMBOL					
			THE TECHNICAL MATERIEL CORP. MAMARONECK. NEW YORK						
			STOCK SIZE						
			SWITCH, ROTARY, DPDT						
			MATERIAL						
ISSUE	ITEM	CHANGED FROM	DATE	CH. NO.	DRAFTS	CHECKER	ENG. APP.		
TOLERANCES			SCALE:						
DEC. DIM. ±			MAXIMUM ALLOWABLE TOLERANCES HAVE BEEN DETERMINED AND ANY DEVIATIONS WILL BE CAUSE FOR REJECTION.						
FRAC. DIM. ±			REMOVE ALL BURRS AND SHARP EDGES						
ANGULAR DIM. ±									
TYPE & TEMPER		HEAT TREAT. SPEC.		DRAWN		CHECKED		FINAL APPROVAL	
				P.L.K.		A.J.S.		SW-198	
FINISH & SPEC. NO.		ELEC. DES. APP.		MECH. DES. APP.					