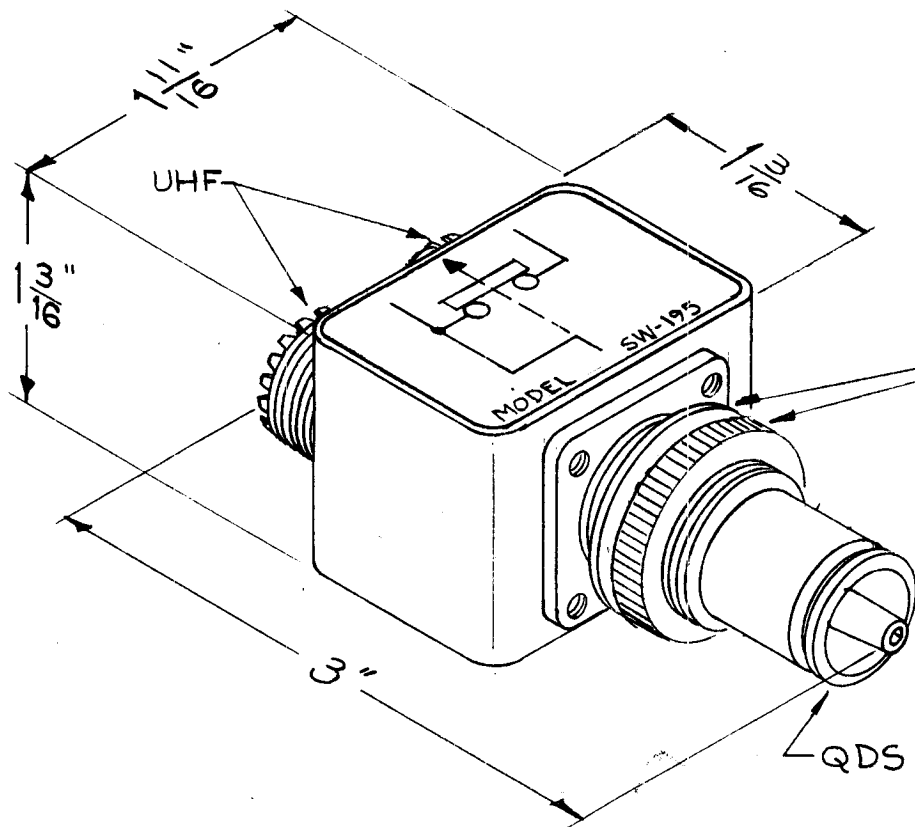


REQ. PER UNIT	USED ON		DATE	SW-195	E
	MODEL	ASS'Y. NO.			
1	SW-195		6-24-57		

NOTES:

- 1-CASE-MATERIAL-BRASS
FINISH-SIIS TMC SMOOTH
GRAY ENAMEL.
- 2-CONNECTORS FINISH;
BODIES-RHODIUM FLASH
CONTACTS-GOLD FLASH
- 3-FOR MOUNTING -13/16 DIA
HOLE REQ.
- 4-MAX. PANEL THICKNESS- 3/16.
- 5-SW-195 IS NAVY TYPE
SA-598/U & REPLACES
NT-491388.



SHOULDER
STRAIGHT
KNURLED
MTG. NUT &
INT. LOCKWASHER

NOTE: ASSIGNED PATENT NO. 2,767,267

E	-	PATENT NOTE ADDED	9/30/65	14846	D.V.	QC/B												
D	1	COMPLETELY UPDATED	1-7-63	7967														
C	2	Lock washer added to note	4/7/61	4614														
	1	Dual 50-239A was 50-239																
B	1	JJ-162 was JJ-150	8/6/58	418														
A	1	1 1/16 was 1 5/8	10/21/57	1	16													
ISSUE	ITEM	CHANGED FROM	DATE	CH. NO.	DRAFTS	CHECKER	ENG. APP.											
TOLERANCES			SCALE: 2A-1433															
DEC. DIM. ±			MAXIMUM ALLOWABLE TOLERANCES HAVE BEEN DETERMINED AND ANY DEVIATIONS WILL BE CAUSE FOR REJECTION. REMOVE ALL BURRS AND SHARP EDGES						TYPE & TEMPER	HEAT TREAT. SPEC.	DRAWN	CHECKED	FINAL APPR VAL					
FRAC. DIM. ±									SEE NOTES									
ANGULAR DIM. ±									FINISH & SPEC. NO.									
										ELEC. DES. APP.	MECH. DES. APP.	SW-195	E					