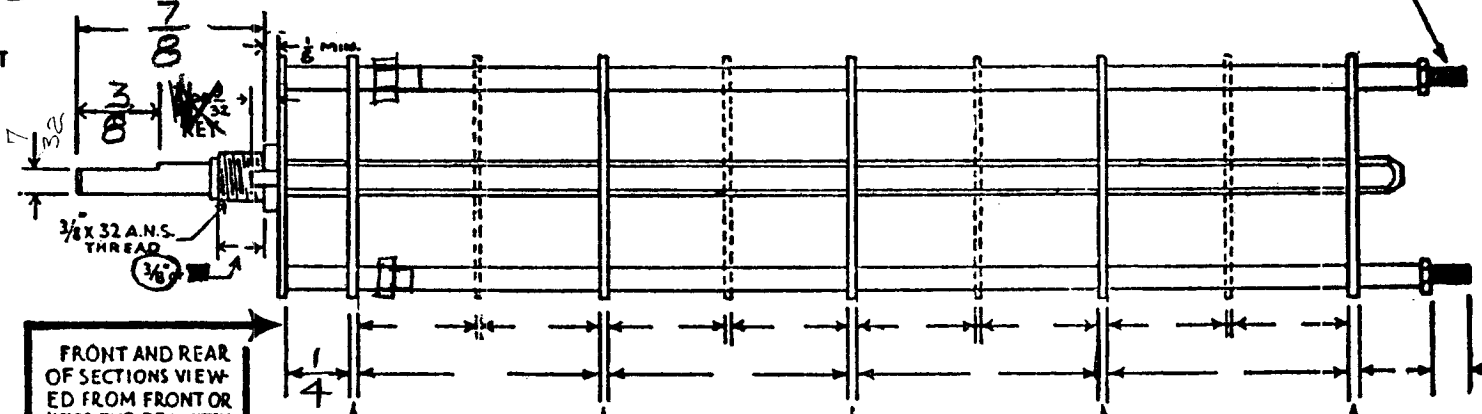
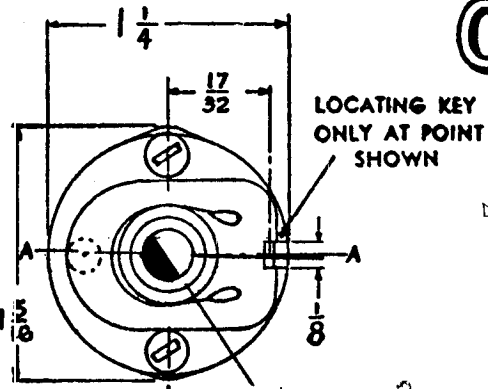


SW-193

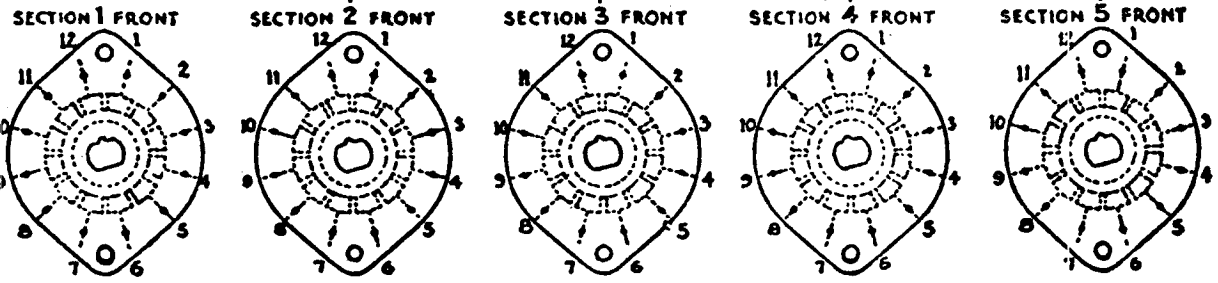
# OAK TYPE F SWITCH

CUSTOMER'S SW-193  
PART NO.

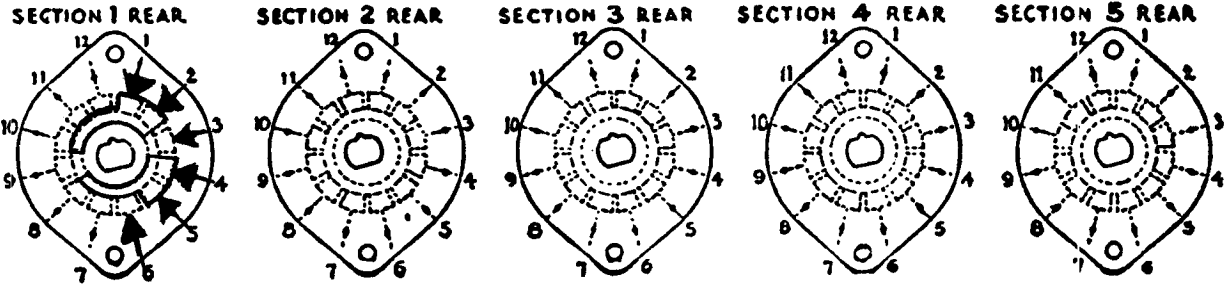
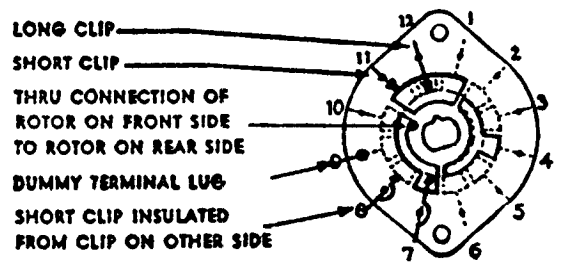


FRONT AND REAR OF SECTIONS VIEWED FROM FRONT OR KNOB END OF SWITCH IN EXTREME COUNTER-CLOCKWISE POSITION

NUMBER OF SECTIONS 1  
 NUMBER OF POSITIONS 2  
 ANGLE OF THROW 30 (30° OR 60°)



### SYMBOLS USED IN MARKING PRINT



OUTLINE ROTOR BLADES AS SHOWN ABOVE WITH SWITCH IN EXTREME COUNTER-CLOCKWISE POSITION

### SPECIFICATIONS

SHORTING TYPE CONTACTS  NON-SHORTING  IF NOT SPECIFIED SHORTING TYPE WILL BE SUPPLIED.  
 INSULATION:  BAKELITE  MYCALEX  SPECIFY IMPREGNATION IF REQUIRED.  
 FINISH REQUIREMENTS: COMMERCIAL  ARMY  NAVY  SALT TEST (IF ANY GIVE DETAILS)  
 CONTACTS AND ROTORS: SILVER PLATED BRASS  SOLID SILVER ALLOY  IF NOT SPECIFIED SILVER PLATED BRASS WILL BE SUPPLIED.  
 MOUNTING HARDWARE: SUPPLY 1 3/8" .32 NUTS 2 ACROSS FLATS; MATERIAL B PLATING Ni  
1 3/8" INTERNAL TOOTH LOCKWASHER; MATERIAL B PLATING Ni  
 STAMP PART NUMBER SW-193 ON FRONT PLATE, YES  NO

### CUSTOMER NOTES

Model MSR

MANUAL - XTAL SW

THE TECHNICAL MATERIAL CORPORATION  
MAMARONECK, NEW YORK

DATE <u>Feb 14, 1957</u>	CHKD. <u>P.L.K.</u>
DRAWN <u>P.L.K.</u>	APPD. <u>A.J.</u>
SHEET <u>OF</u>	NO. <u>SW-193</u>

CUSTOMER

OAK MFG. CO.

1260 CLYBOURN AVE, CHICAGO 10, ILL.

DATE