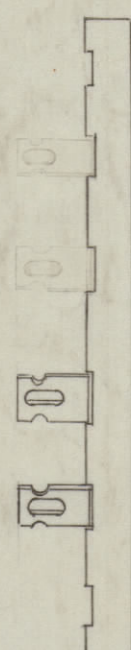
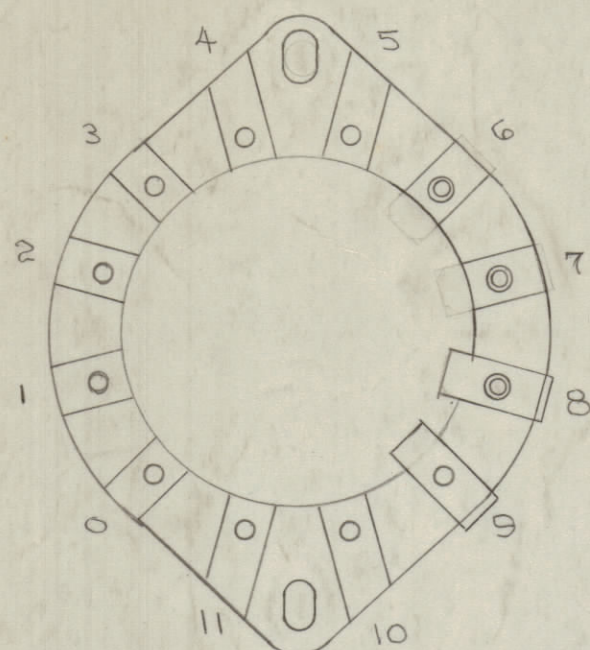
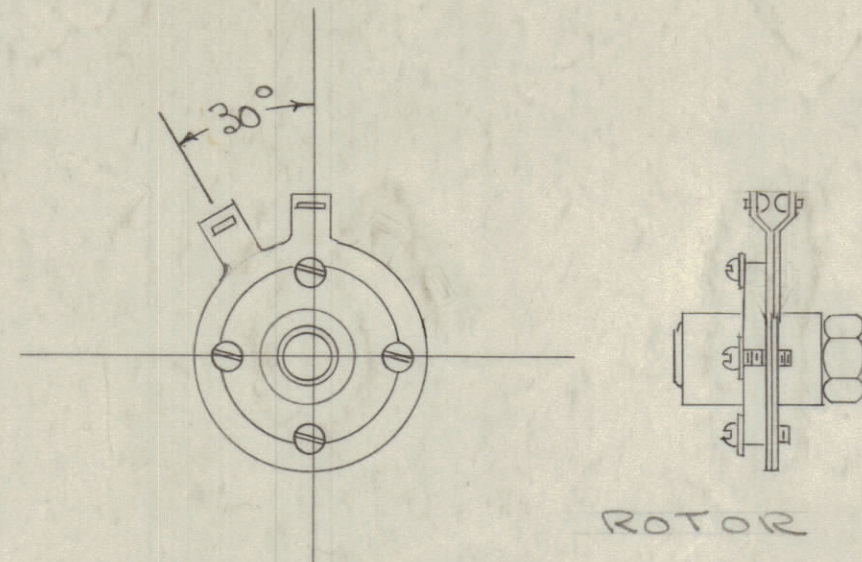


IF IT IS FOUND DESIRABLE TO CHANGE ANY TOLERANCE OR OTHER DETAIL SPECIFIED ON THIS DRAWING NOTIFY THE PURCHASER PROMPTLY.

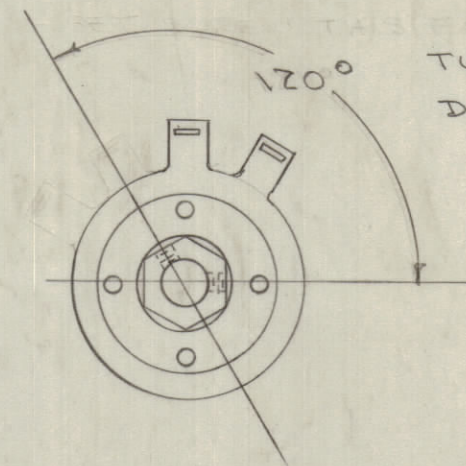
MAXIMUM ALLOWABLE TOLERANCES HAVE BEEN DETERMINED AND DEVIATIONS WILL BE CAUSE FOR REJECTION. REMOVE ALL BURRS AND SHARP EDGES



WAFER
CONTACTS - BREAK BEFORE MAKE
POSITIONS - 8-9



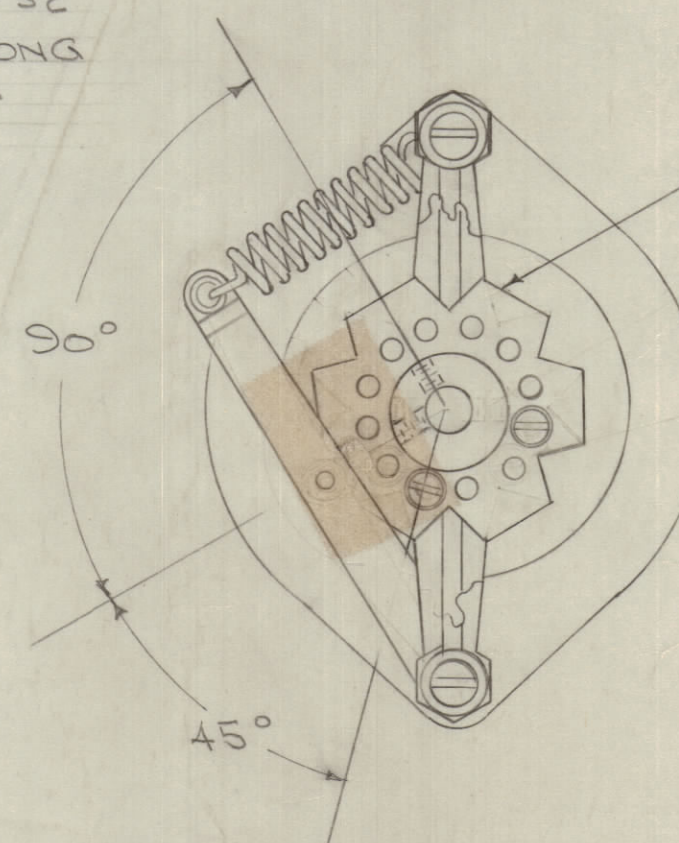
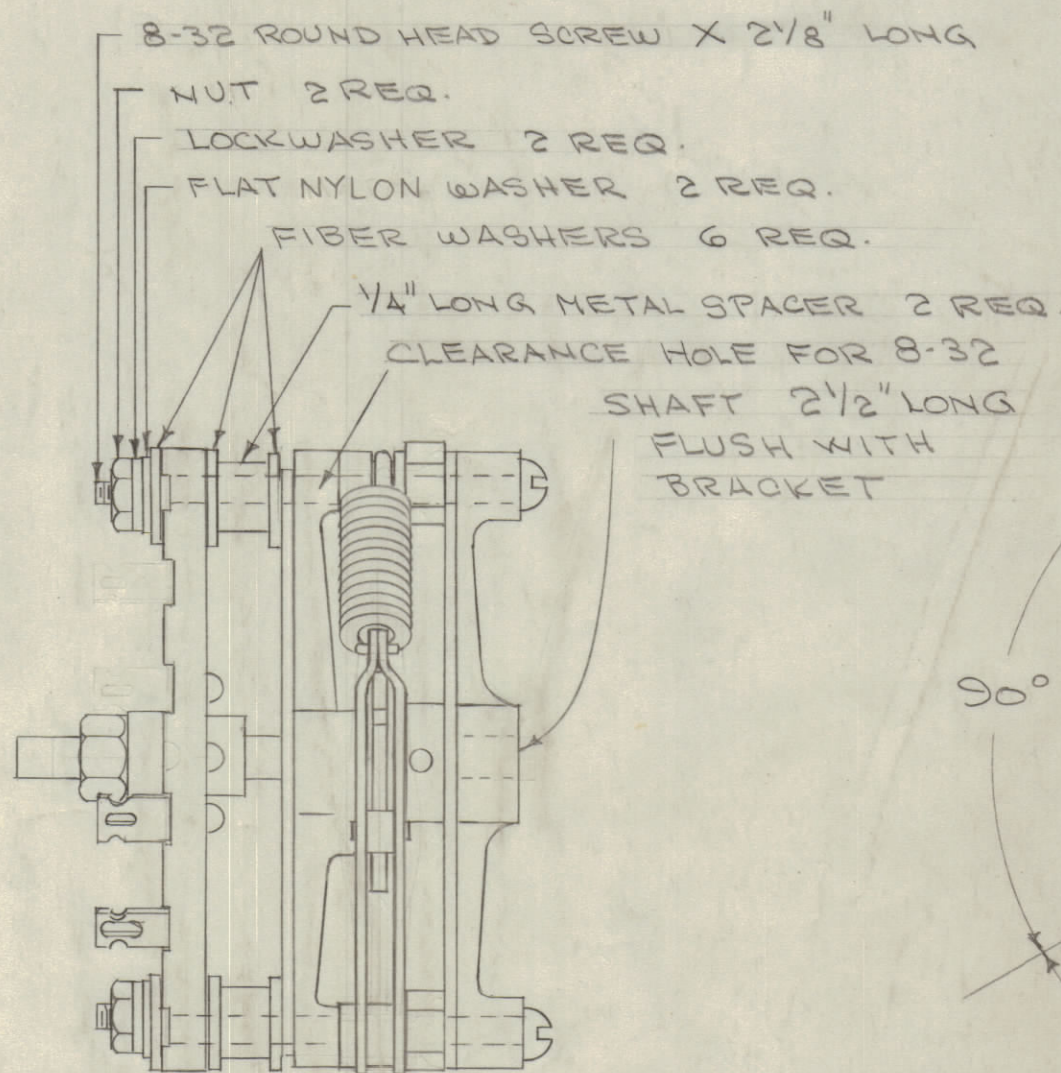
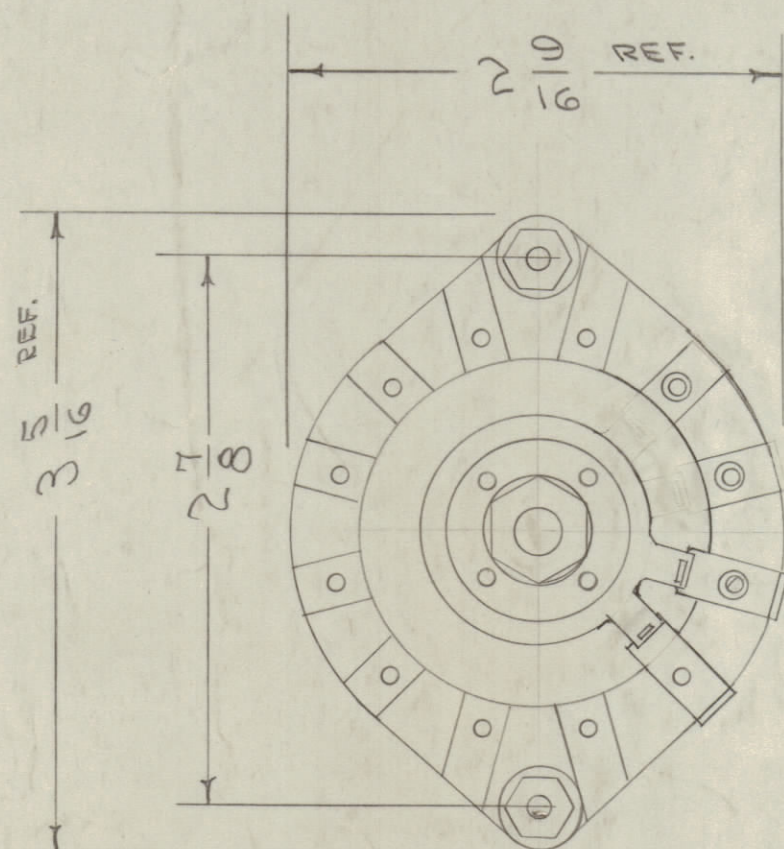
ROTOR



TWO SET SCREWS IN POSITION SHOWN.
DO NOT PIN ROTOR TO SHAFT.

FOR SPARE PARTS ONLY

TMC NO.	DESIGNATION
SW-188-1	ROTOR SECTION
SW-188-2	WAFER SECTION
SW-188-3	DETENT SECTION



60° DETENT WHEEL
DO NOT PIN TO SHAFT
TWO 8-32 SET SCREWS
TO BE FURNISHED BY MFR.
TWO STOP SCREWS TO BE
FURNISHED BY MFR.
NOTE RELATION OF STOP
SCREWS TO SET SCREW
POSITIONS.

SW-188 D

NOTICE TO PERSONS RECEIVING THIS DRAWING

THE TECHNICAL MATERIEL CORPORATION claims proprietary right in the material disclosed hereon. This drawing is issued in confidence for engineering information only and may not be reproduced or used to manufacture anything shown hereon without permission from THE TECHNICAL MATERIEL CORPORATION to the user. This drawing is loaned for mutual assistance and is subject to recall at any time.

Property of:

THE TECHNICAL MATERIEL CORPORATION
MAMARONECK, NEW YORK

ISSUE	ITEM	CHANGED FROM	DATE	CN. NO.	DRAFTS	CHECKER	ENG. APP.
D	1	Detent Portion Changed	8-12-60	2749	J.C.B.		
C	1	TMC NO. & DESIGNATION ADDED	3-5-57	3	E.		
B	1	COMPLETE REVISION	9/20/44	2	CHD		AJJ
A	1	NOTE ADDED RE SHAFT POS.	9/14/44	1	CHD		AJJ

TOLERANCES: SCALE: S401-113 (MODEL 86)

ALL OTHERS	DEC. DIM. ± FRAC. DIM. ± ANGULAR DIM. ±	DRILL, PUNCH, COMMERCIAL STOCK SIZES AND MANUFACTURERS TOLERANCES ARE NOT INCLUDED.
------------	---	---

REQ PER UNIT	MODEL	PROJECT NO.	ASS'Y. NO.	DATE
1				

USED ON

REQ. ITEM	PART NO.	DESCRIPTION	SYMBOL
		THE TECHNICAL MATERIEL CORP. MAMARONECK, NEW YORK	
STOCK SIZE		CAPACITOR INCREASE	
MATERIAL WEIGHT PER PC.		SWITCH P/A RTF	
TYPE & TEMPER		00 9/4/56	
HEAT TREAT. SPEC.		DRAWN	ELEC. DES. APP. MECH. DES. APP.
FINISH & SPEC. NO.		CHECKED	FINAL APPROVAL
			SW-188 D