

CUSTOMER'S SW-185  
PART NO.

CUSTOMER

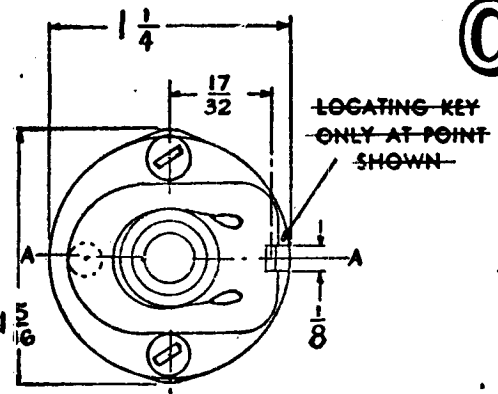
OAK MFG. CO.

1260 CLYBORN AVE., CHICAGO 10, ILL.

# OAK TYPE F SWITCH

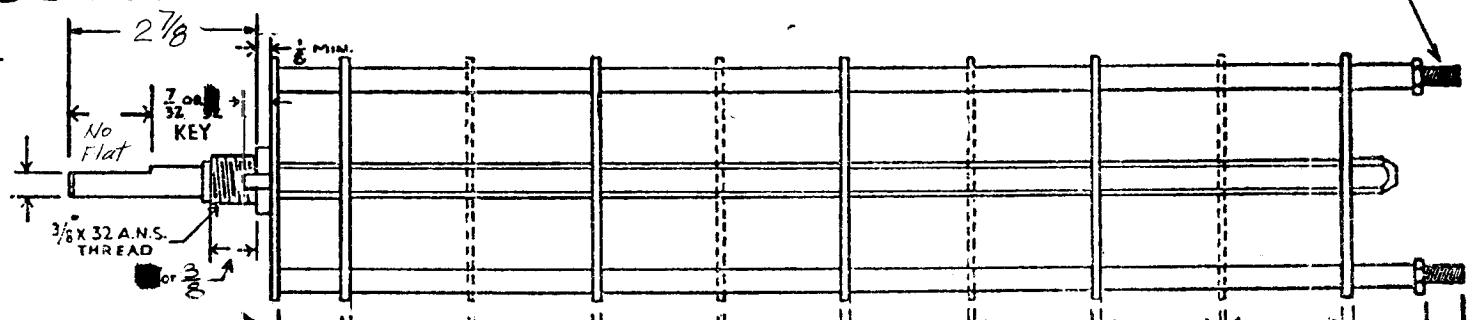
SW-185-A

4-40 THREAD



LOCATING KEY  
ONLY AT POINT  
SHOWN

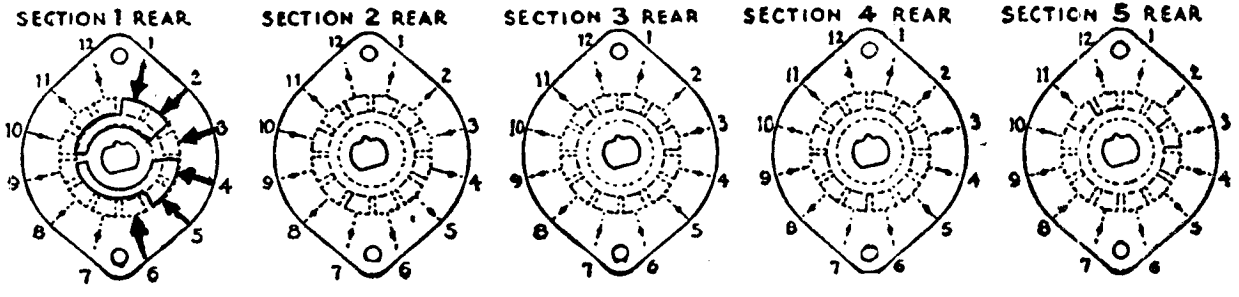
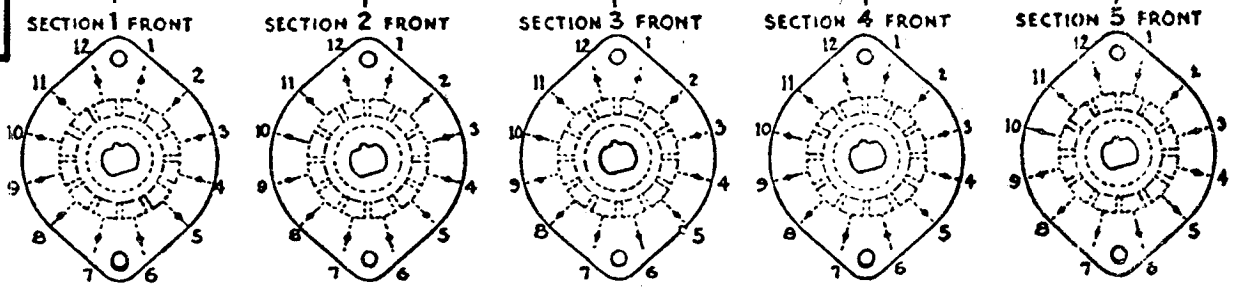
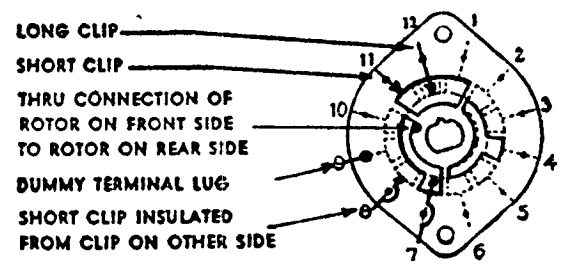
SHOW CUT AWAY PORTION  
OF FLAT IN BLACK AND GIVE  
ANGLE TO LINE A-A.  $\pm 3^\circ$   
STANDARD RMA KNURLED AND  
SLOTTED SHAFT ALSO AVAILABLE



FRONT AND REAR  
OF SECTIONS VIEWED  
FROM FRONT OR  
KNOB END OF SWITCH  
IN EXTREME COUNTER-  
CLOCKWISE POSITION

NUMBER OF SECTIONS  $\frac{1}{2}$   
NUMBER OF POSITIONS  $\frac{2}{1}$   
ANGLE OF THROW  $30^\circ$  (30° OR 60°)

### SYMBOLS USED IN MARKING PRINT



CUSTOMER NOTES

OUTLINE ROTOR BLADES AS SHOWN ABOVE WITH  
SWITCH IN EXTREME COUNTER-CLOCKWISE POSITION

### SPECIFICATIONS

SHORTING TYPE CONTACTS  NON-SHORTING  IF NOT SPECIFIED SHORTING TYPE WILL BE SUPPLIED.  
INSULATION:  $\frac{1}{16}$  BAKELITE   $\frac{1}{8}$  MYCALEX  SPECIFY IMPREGNATION IF REQUIRED.  
FINISH REQUIREMENTS: COMMERCIAL ; ARMY ; NAVY ; SALT TEST (IF ANY GIVE DETAILS).  
CONTACTS AND ROTORS: SILVER PLATED BRASS ; SOLID SILVER ALLOY ; IF NOT SPECIFIED SILVER  
PLATED BRASS WILL BE SUPPLIED.  
MOUNTING HARDWARE: SUPPLY  $\frac{1}{2}$  32 NUTS  $\frac{1}{2}$  ACROSS FLATS; MATERIAL BR PLATING NK  
 $\frac{1}{8}$  3/8" INTERNAL TOOTH LOCKWASHER; MATERIAL BR PLATING NK  
STAMP PART NUMBER SW-185-A ON FRONT PLATE, YES  NO

AM-SSB GSB-1	
<b>THE TECHNICAL MATERIAL CORPORATION</b> MAMARONECK, NEW YORK	
DATE 6-1-56	CHKD. H.H.
DRAWN [Signature]	APPD. A.J.J.
SHEET 1 OF 1	NO. SW-185 A

DATE \_\_\_\_\_

